

District I  
PO Box 1980, Hobbs, NM 88241-1980  
District II  
811 S. 1st Street, Artesia, NM 88210-2834  
District III  
1000 Rio Brazos Rd., Aztec, NM 87410  
District IV  
2040 South Pacheco, Santa Fe, NM 87505

State of New Mexico  
Energy, Minerals & Natural Resources Department

OIL CONSERVATION DIVISION  
2040 South Pacheco  
Santa Fe, NM 87505

Form C-101  
Revised October 18, 1994  
Instructions on back  
Submit to Appropriate District Office  
State Lease - 6 Copies  
Fee Lease - 5 Copies

☐ AMENDED REPORT

APPLICATION FOR PERMIT TO DRILL, RE-ENTER, DEEPEN, PLUGBACK, OR ADD A ZONE

<sup>1</sup> Operator name and Address <b>Occidental Permian Limited Partnership P.O. Box 4294 Houston, TX 77210-4294</b>		<sup>2</sup> OGRID Number <b>157984</b>
		<sup>3</sup> API Number <b>30-025-35743</b>
<sup>4</sup> Property Code <b>19520</b>	<sup>5</sup> Property Name <b>North Hobbs G/SA Unit</b>	<sup>6</sup> Well No. <b>843</b>

<sup>7</sup> Surface Location

UL or lot no.	Section	Township	Range	Lot. Idn	Feet from the	North/South Line	Feet from the	East/West line	County
<b>I</b>	<b>33</b>	<b>18-S</b>	<b>38-E</b>		<b>1933</b>	<b>South</b>	<b>294</b>	<b>East</b>	<b>Lea</b>

<sup>8</sup> Proposed Bottom Hole Location If Different From Surface

UL or lot no.	Section	Township	Range	Lot. Idn	Feet from the	North/South Line	Feet from the	East/West line	County
<b>I</b>	<b>33</b>	<b>18-S</b>	<b>38-E</b>		<b>1409</b>	<b>South</b>	<b>740</b>	<b>East</b>	<b>Lea</b>

<sup>9</sup> Proposed Pool 1

**Hobbs; Grayburg - San Andres**

<sup>10</sup> Proposed Pool 2

<sup>11</sup> Work Type Code <b>N</b>	<sup>12</sup> Well Type Code <b>O</b>	<sup>13</sup> Cable/Rotary <b>R</b>	<sup>14</sup> Lease Type Code <b>P</b>	<sup>15</sup> Ground Level Elevation <b>3627</b>
<sup>16</sup> Multiple <b>No</b>	<sup>17</sup> Proposed Depth <b>4500'</b>	<sup>18</sup> Formation <b>San Andres</b>	<sup>19</sup> Contractor <b>Key Energy</b>	<sup>20</sup> Spud Date <b>December, 2001</b>

<sup>21</sup> Proposed Casing and Cement Program

Hole Size	Casing Size	Casing weight/foot	Setting Depth	Sacks of Cement	Estimated TOC
<b>20</b>	<b>16</b>	<b>Conductor</b>	<b>40</b>	<b>50</b>	<b>Surface</b>
<b>13-3/8</b>	<b>9-5/8</b>	<b>32</b>	<b>1650</b>	<b>1050</b>	<b>Surface</b>
<b>8-3/4</b>	<b>7</b>	<b>23</b>	<b>4500</b>	<b>950</b>	<b>Surface</b>

<sup>22</sup> Describe the proposed program. If this application is to DEEPEN or PLUG BACK give the data on the present productive zone and proposed new productive zone. Describe the blowout prevention program, if any. Use additional sheets if necessary

**See attached for proposed drilling program  
BOP Program 3000# Ram Preventer**

**Well to be drilled as a directional well due to a surface obstruction situated above the bottomhole target.**

**Note - Well will be drilled closed-loop - Oxy intends to haul drilling fluids and cuttings to Parabo Inc., Eunice, New Mexico**

<sup>23</sup> I hereby certify that the information given above is true and complete to the best of my knowledge and belief.

Signature:

*Mark Stephens*

Printed name: **Mark Stephens (281) 552-1158**

Title: **Business Analyst (SG)**

OIL CONSERVATION DIVISION

Approved by:

*PAUL F. KAUTZ*

Title:

**PETROLEUM ENGINEER**

Approval Date:

Expiration Date:

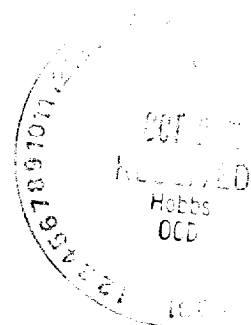
**Permit Expires 1 Year From Approval  
Date Unless Drilling Underway**

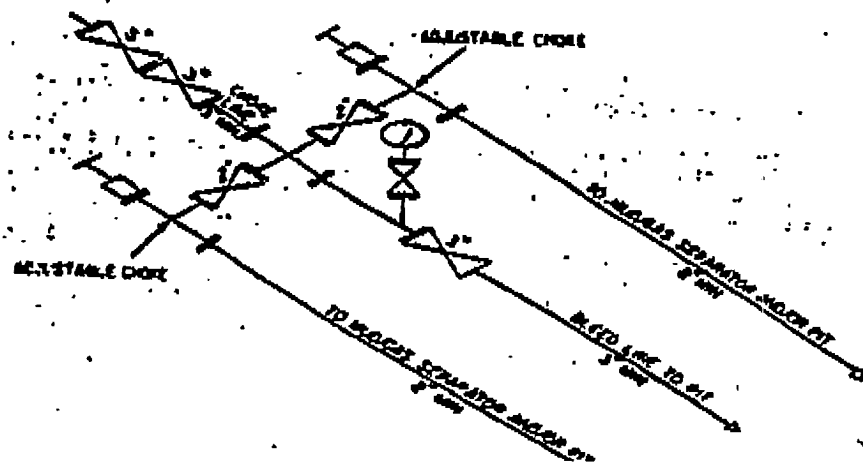
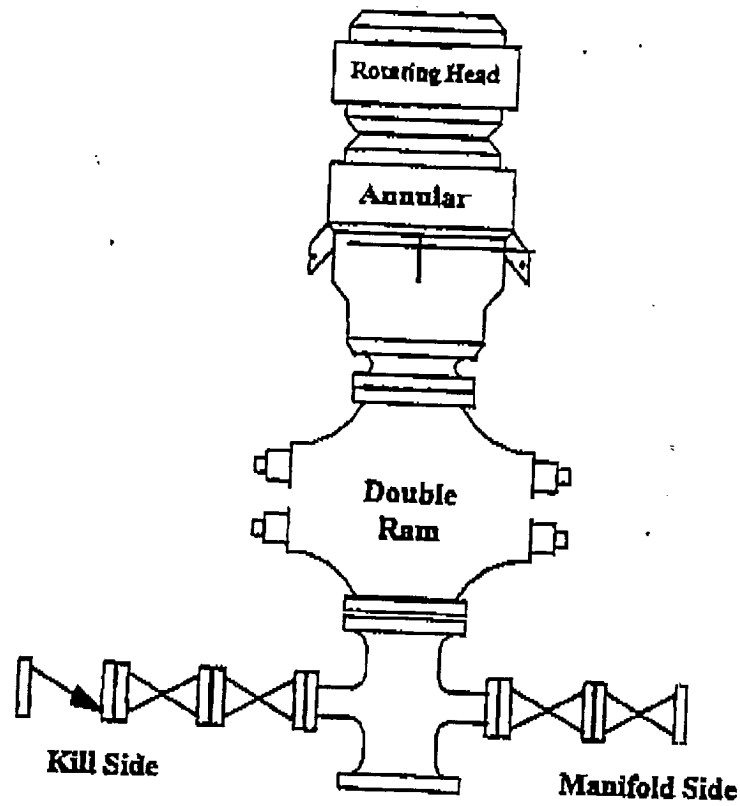
Proposed Drilling Program  
North Hobbs G/SA Unit  
Well No. 33-843  
Lea County, New Mexico

A 16" conductor will be set and cemented to surface with 50 sx. cement. A 13-3/8" hole will be drilled from surface to approximately 1700'. This will allow for protection of all water zones and casing off of the Red Beds. A full string of 9-5/8", 32#, J-55 surface casing will be run and set 50' into the top of the Rustler Anhydrite with cement circulated to surface. The cement will be allowed to set for a minimum of eight (8) hours (minimum 500# compressive strength) and will then be tested to 1500 psi for 30 minutes before drilling resumes. After the casing is run and cemented, weld on 9-5/8" X 11" 3M casinghead housing and nipple up BOP stack (3000# Ram Preventer).

An 8-3/4" hole will be drilled out from surface casing point (1600') to +/- 4500' TVD. A full string of 7", 23#, J-55 production casing will be run to TD and cemented to surface (casing test to 1500 psi will be done by the completion rig).

---





DISTRICT I  
P.O. Box 1880, Hobbs, NM 88241-1880

State of New Mexico  
Energy, Minerals and Natural Resources Department

Form C-102  
Revised February 10, 1994  
Submit to Appropriate District Office  
State Lease - 4 Copies  
Fee Lease - 3 Copies

DISTRICT II  
P.O. Drawer DD, Artesia, NM 88211-0719

DISTRICT III  
1000 Rio Brazos Rd., Artec, NM 87410

DISTRICT IV  
P.O. BOX 2088, SANTA FE, N.M. 87504-2088

OIL CONSERVATION DIVISION  
P.O. Box 2088  
Santa Fe, New Mexico 87504-2088

☐ AMENDED REPORT

WELL LOCATION AND ACREAGE DEDICATION PLAT

API Number <b>30-025-35743</b>	Pool Code <b>31920</b>	Pool Name <b>HOBBS:GRAYBURG - SAN ANDRES</b>
Property Code <b>19520</b>	Property Name <b>NORTH HOBBS G/SA UNIT</b>	Well Number <b>843</b>
OGRID No. <b>157984</b>	Operator Name <b>Occidental Permian Limited Partnership</b>	Elevation <b>3627</b>

Surface Location

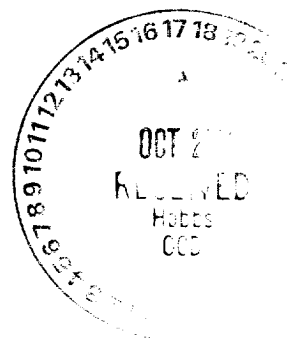
UL or lot No.	Section	Township	Range	Lot Idn	Feet from the	North/South line	Feet from the	East/West line	County
<b>1</b>	<b>33</b>	<b>18 S</b>	<b>38 E</b>		<b>1933</b>	<b>SOUTH</b>	<b>294</b>	<b>EAST</b>	<b>LEA</b>

Bottom Hole Location If Different From Surface

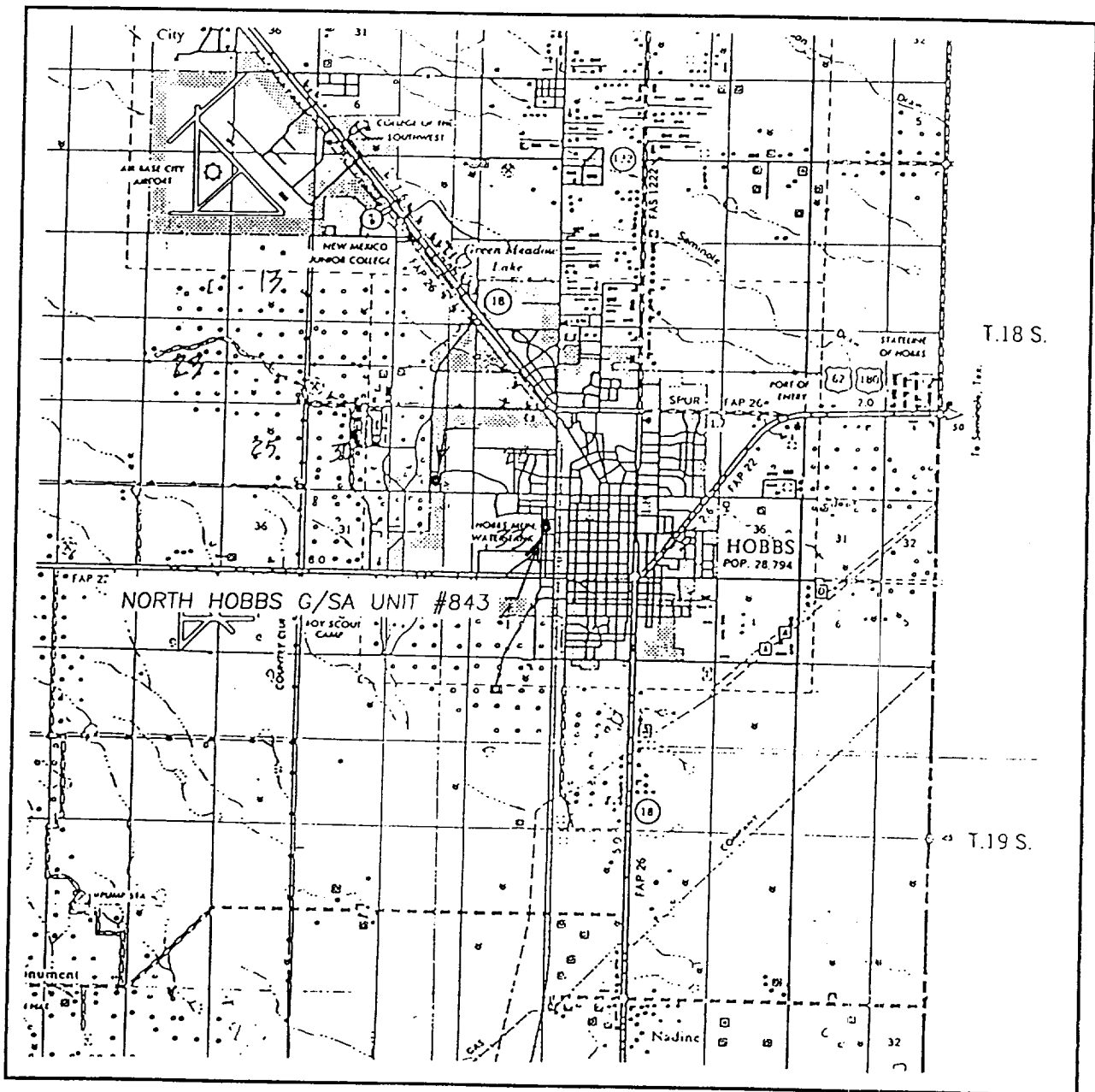
UL or lot No.	Section	Township	Range	Lot Idn	Feet from the	North/South line	Feet from the	East/West line	County
<b>1</b>	<b>33</b>	<b>18 S</b>	<b>38 E</b>		<b>1409</b>	<b>SOUTH</b>	<b>740</b>	<b>EAST</b>	<b>LEA</b>
Dedicated Acres <b>40</b>	Joint or Infill <b>I</b>	Consolidation Code	Order No. <b>NSL-4646</b>						

NO ALLOWABLE WILL BE ASSIGNED TO THIS COMPLETION UNTIL ALL INTERESTS HAVE BEEN CONSOLIDATED  
OR A NON-STANDARD UNIT HAS BEEN APPROVED BY THE DIVISION

<p>(TRUE BRG.) S40°18'W - 618' SURF. TO PROP. PENETRATION PT. (TRUE BRG.) S40°18'W - 688' SURF. TO PROP. BOTTOM HOLE LOC.</p> <p>GEOGRAPHIC LOCATION NAD 27 LAT. = 32°42'06.55" N LONG. = 103°08'43.03" W</p> <p>PROP. PENETRATION POINT 3879' TVD</p> <p>PROPOSED BOTTOM HOLE LOCATION NAD 27 NM EAST ZONE N=620550.5 E=865027.0</p> <p>NORTH HOBBS (GRAYBURG SAN ANDRES) UNIT BOUNDARY</p> <p>330' UNIT BOUNDARY OFFSET LINE</p>				<p>DETAIL</p> <p>3632.1' 3626.7'</p> <p>3627.4' 3625.2'</p> <p>SEE DETAIL</p> <p>294'</p> <p>695'</p> <p>740'</p> <p>1409'</p> <p>1462'</p> <p>1933'</p>		<p><b>OPERATOR CERTIFICATION</b></p> <p>I hereby certify that the information contained herein is true and complete to the best of my knowledge and belief.</p> <p><u>Mark Stephens</u> Signature</p> <p><u>Mark Stephens</u> Printed Name</p> <p><u>Business Analyst (SG)</u> Title</p> <p><u>October 16, 2001</u> Date</p> <p><b>SURVEYOR CERTIFICATION</b></p> <p>I hereby certify that the well location shown on this plat was plotted from field notes of actual surveys made by me or under my supervision, and that the same is true and correct to the best of my belief.</p> <p><u>APRIL 11, 2001</u> Date Surveyed</p> <p><u>LMP</u> Signature &amp; Seal of Professional Surveyor</p> <p><u>5/8/01</u> 01-11-0432</p> <p>Certificate No. <u>RONALD A. EIDSON</u> 3239 <u>EARY EIDSON</u> 12841</p>
--	--	--	--	--	--	--



# VICINITY MAP



SCALE: 1" = 2 MILES

SEC. 33 TWP. 18-S RGE. 38-E

SURVEY N.M.P.M.

COUNTY LEA

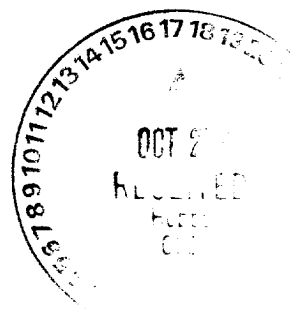
DESCRIPTION 1933' FSL & 294' FEL

ELEVATION 3627

OPERATOR OCCIDENTAL PERMIAN LTD.

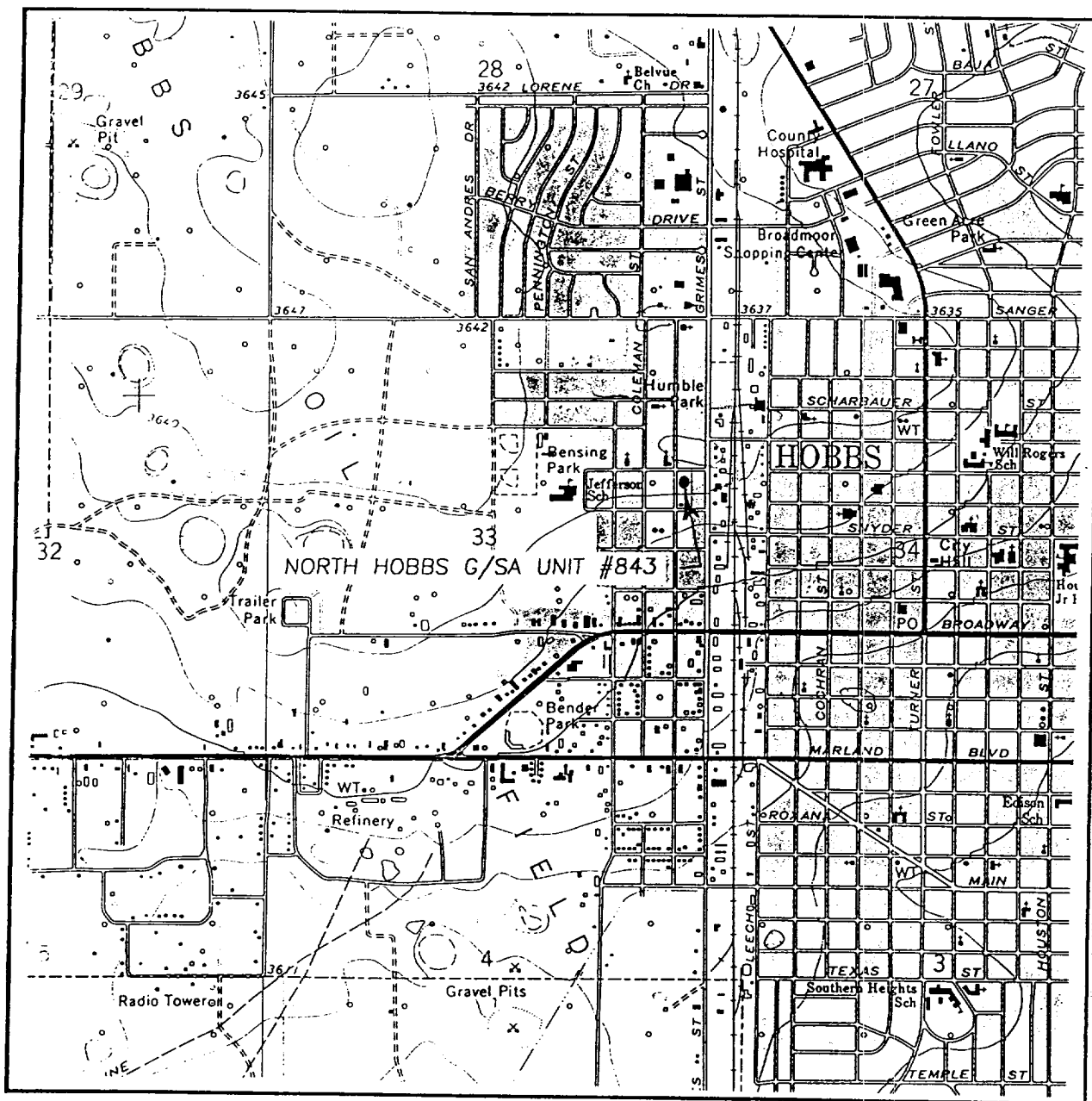
LEASE NORTH HOBBS G/SA UNIT

JOHN WEST SURVEYING  
HOBBS, NEW MEXICO  
(505) 393-3117





# LOCATION VERIFICATION MAP



SCALE: 1" = 2000'

CONTOUR INTERVAL: 5'  
HOBBS, N.M.

SEC. 33 TWP. 18-S RGE. 38-E

SURVEY N.M.P.M.

COUNTY LEA

DESCRIPTION 1933' FSL & 294' FEL

ELEVATION 3627

OPERATOR OCCIDENTAL PERMIAN LTD.

LEASE NORTH HOBBS G/SA UNIT

U.S.G.S. TOPOGRAPHIC MAP  
HOBBS, N.M.

JOHN WEST SURVEYING  
HOBBS, NEW MEXICO  
(505) 393-3117