

District I  
1625 N. French Dr., Hobbs, NM 88240  
District II  
811 S. 1st Street, Artesia, NM 88210  
District III  
1000 Rio Brazos Rd., Aztec, NM 87410  
District IV  
2040 South Pacheco, Santa Fe, NM 87505

State of New Mexico  
Energy, Minerals & Natural Resources

Form C-101  
Revised March 17, 1999

Oil Conservation Division  
2040 South Pacheco  
Santa Fe, NM 87505

Submit to appropriate District Office  
State Lease - 6 Copies  
Fee Lease - 5 Copies

☐ AMENDED REPORT

APPLICATION FOR PERMIT TO DRILL, RE-ENTER, DEEPEN, PLUGBACK, OR ADD A ZONE

<sup>1</sup> Operator Name and Address <b>Chevron U.S.A. Inc.</b> <b>P.O. Box 1150 Midland, TX 79702</b>		<sup>2</sup> OGRID Number <b>4323</b>
<sup>4</sup> Property Code <b>28956</b>	<sup>5</sup> Property Name <b>N. LUSK 32 STATE</b>	<sup>3</sup> API Number <b>30-025-35747</b> <sup>6</sup> Well No. <b>1</b>

<sup>7</sup> Surface Location									
UL or lot no.	Section	Township	Range	Lot. Idn	Feet from the	North/South Line	Feet from the	East/West line	County
<b>C</b>	<b>32</b>	<b>18S</b>	<b>32E</b>		<b>330</b>	<b>NORTH</b>	<b>2258</b>	<b>WEST</b>	<b>LEA</b>

<sup>8</sup> Proposed Bottom Hole Location If Different From Surface									
UL or lot no.	Section	Township	Range	Lot. Idn	Feet from the	North/South Line	Feet from the	East/West line	County
<sup>9</sup> Proposed Pool 1 <b>NORTH LUSK; STRAWN</b>					<sup>10</sup> Proposed Pool 2				

<sup>11</sup> Work Type Code <b>N</b>	<sup>12</sup> Well Type Code <b>O</b>	<sup>13</sup> Cable/Rotary <b>ROTARY</b>	<sup>14</sup> Lease Type Code <b>S</b>	<sup>15</sup> Ground Level Elevation <b>3703'</b>
<sup>16</sup> Multiple	<sup>17</sup> Proposed Depth <b>12,000'</b>	<sup>18</sup> Formation <b>STRAWN</b>	<sup>19</sup> Contractor <b>UNKNOWN</b>	<sup>20</sup> Spud Date <b>11/15/01</b>

<sup>21</sup> Proposed Casing and Cement Program					
Hole Size	Casing Size	Casing weight/foot	Setting Depth	Sacks of Cement	Estimated TOC
<b>17-1/2"</b>	<b>13-3/8"</b>	<b>54.5</b>	<b>500'</b>	<b>550</b>	<b>SURF</b>
<b>12-1/4"</b>	<b>9-5/8"</b>	<b>36</b>	<b>4,000'</b>	<b>1700</b>	<b>SURF</b>
<b>8-3/4"</b>	<b>5-1/2"</b>	<b>17</b>	<b>12,000'</b>	<b>1950</b>	<b>SURF</b>

<sup>22</sup> Describe the proposed program. If this application is to DEEPEN or PLUG BACK, give the data on the present productive zone and proposed new productive zone.

Describe the blowout prevention program, if any. Use additional sheets if necessary.

Permit Expires 1 Year From Approval  
Date Unless Drilling Underway

CHEVRON PROPOSES TO:

DRILL TO 500', RUN 13-3/8" CSG. CMT W/ CL "C" TO SURF.  
DRILL TO 4,000', RUN 9-5/8" CSG. CMT W/CL "C" TO SURF.  
DRILL TO 12,000', RUN 5-1/2" CSG. CMT W/CL "C".

MUD PROGRAM SURFACE HOLE: 0' - 500' FRESH WATER 8.8 PPG  
INTERMEDIATE HOLE: 500' - 4,000' BRINE WATER 10.0 PPG  
PRODUCTION HOLE: 4,000' - 12,000' CUT BRINE WATER 8.8-10.2 PPG

<sup>23</sup> I hereby certify that the information given above is true and complete to the best of my knowledge and belief.

Signature: *J.K. Ripley*

Printed name: J. K. RIPLEY

Title: REGULATORY O.A.

Date: 10/11/01

Phone: (915) 687-7148

OIL CONSERVATION DIVISION

Approved by:

Title:

Approval Date:

Expiration Date:

Conditions of Approval:

Attached ☐

DISTRICT I  
P.O. Box 1980, Hobbs, NM 88241-1980

State of New Mexico

Energy, Minerals and Natural Resources Department

DISTRICT II  
P.O. Drawer DD, Artesia, NM 88211-0719

OIL CONSERVATION DIVISION

P.O. Box 2088

Santa Fe, New Mexico 87504-2088

DISTRICT III  
1000 Rio Brazos Rd., Aztec, NM 87410

DISTRICT IV  
P.O. BOX 2088, SANTA FE, N.M. 87504-2088

WELL LOCATION AND ACREAGE DEDICATION PLAT

☐ AMENDED REPORT

Form C-102  
Revised February 10, 1994  
Submit to Appropriate District Office  
State Lease - 4 Copies  
Fee Lease - 3 Copies

API Number <b>30-025-35747</b>	Pool Code 96678	Pool Name N. Lusk; Strawn
Property Code <b>28956</b>	Property Name N. LUSK 32 STATE	Well Number 1
OGRID No. 4323	Operator Name CHEVRON U.S.A. PRODUCTION COMPANY	Elevation 3703'

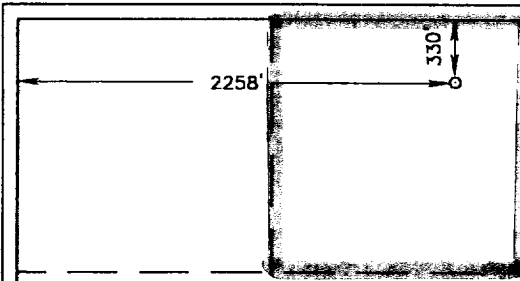
Surface Location

UL or lot No.	Section	Township	Range	Lot Idn	Feet from the	North/South line	Feet from the	East/West line	County
C	32	18-S	32-E		330	NORTH	2258	WEST	LEA

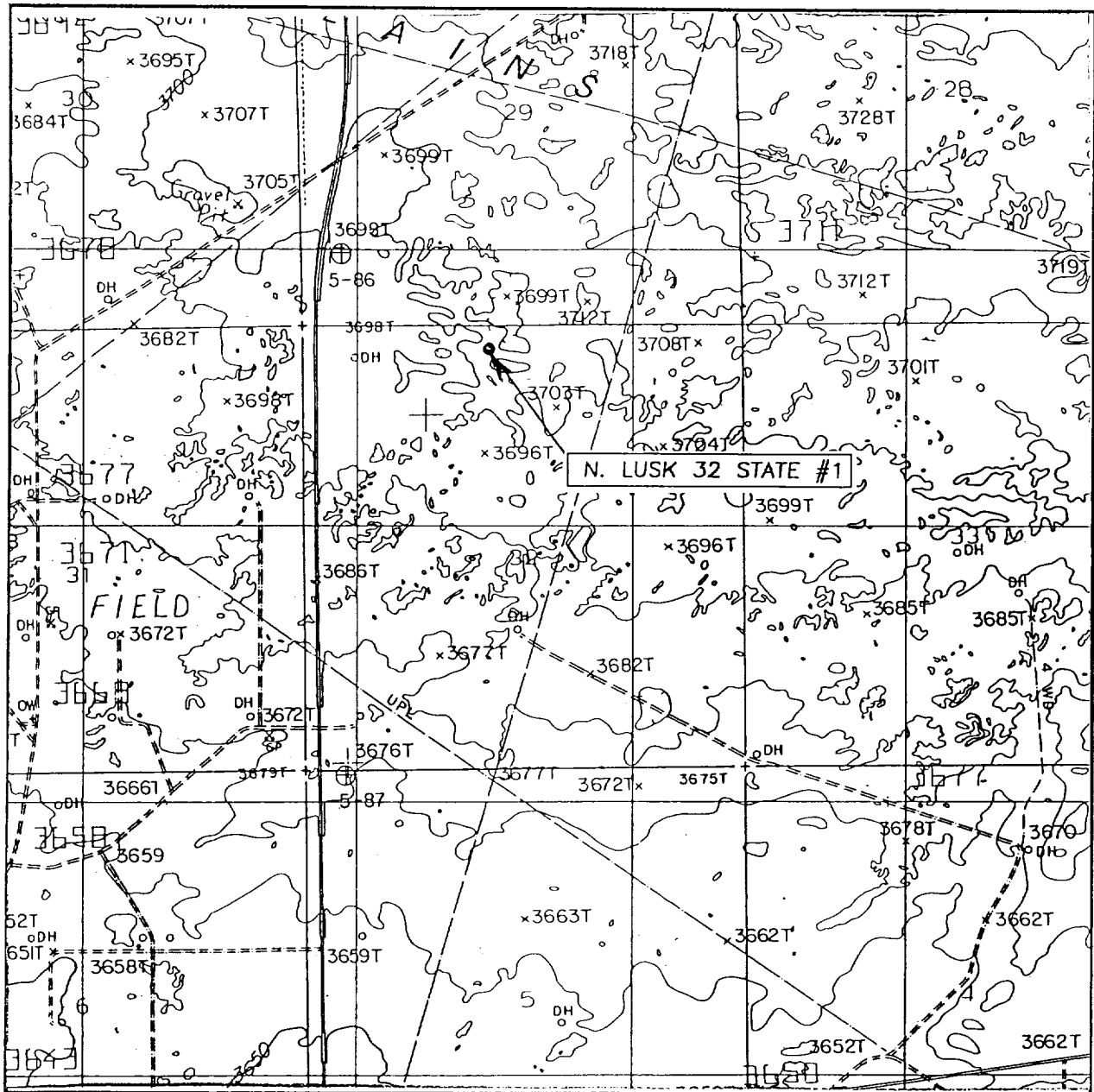
Bottom Hole Location If Different From Surface

UL or lot No.	Section	Township	Range	Lot Idn	Feet from the	North/South line	Feet from the	East/West line	County
Dedicated Acres 40	Joint or Infill	Consolidation Code	Order No.						

NO ALLOWABLE WILL BE ASSIGNED TO THIS COMPLETION UNTIL ALL INTERESTS HAVE BEEN CONSOLIDATED  
OR A NON-STANDARD UNIT HAS BEEN APPROVED BY THE DIVISION

	<p>OPERATOR CERTIFICATION</p> <p>I hereby certify the the information contained herein is true and complete to the best of my knowledge and belief.</p> <p><i>J. K. Ripley</i> Signature</p> <p>J. K. Ripley Printed Name</p> <p>Regulatory O.A. Title</p> <p>10/11/01 Date</p>
<p>GEODETTIC COORDINATES SPC NME</p> <p>Y = 622531.5 X = 667356.7</p> <p>NAD 1927 LAT. 32°42'36.92"N LONG. 103°47'21.23"W</p>	<p>SURVEYOR CERTIFICATION</p> <p>I hereby certify that the well location shown on this plat was plotted from field notes of actual surveys made by me or under my supervision, and that the same is true and correct to the best of my belief.</p> <p>OCTOBER 03, 2001</p> <p>Date Surveyed</p> <p>Signature &amp; Seal of Professional Surveyor <i>Ronald J. Edson</i> Professional Surveyor</p> <p>Certificate No. RONALD J. EDSON 3239 CASEY EDSON 12641</p>

# LOCATION VERIFICATION MAP



SCALE: 1" = 2000'

CONTOUR INTERVAL: 10'

GREENWOOD LAKE, N.M.

SEC. 32 TWP. 18-S RGE. 32-E

SURVEY N.M.P.M.

COUNTY LEA

DESCRIPTION 330' FNL & 2258' FWL

ELEVATION 3703'

OPERATOR CHEVRON U.S.A. PRODUCTION COMPANY

LEASE N. LUSK 32 STATE

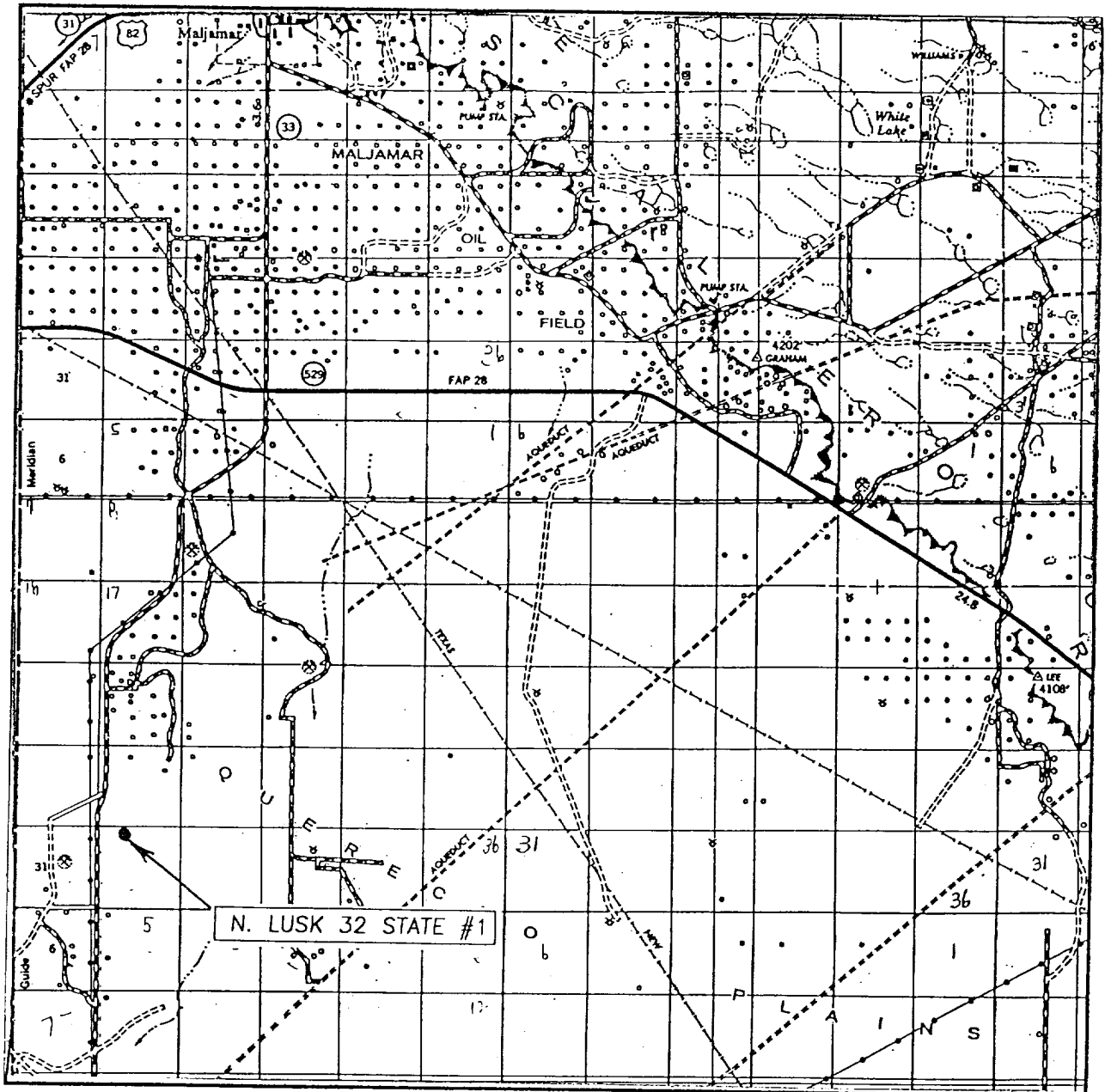
U.S.G.S. TOPOGRAPHIC MAP  
GREENWOOD LAKE, N.M.

JOHN WEST SURVEYING  
HOBBS, NEW MEXICO  
(505) 393-3117

ABOVE DATE DOES NOT  
INDICATE WHEN  
CONFIDENTIAL LOGS  
WILL BE RELEASED

ELF

# VICINITY MAP



SCALE: 1" = 2 MILES

SEC. 32 TWP. 18-S RGE. 32-E

SURVEY N.M.P.M.

COUNTY LEA

DESCRIPTION 330' FNL & 2258 'FWL

ELEVATION 3703'

OPERATOR CHEVRON U.S.A. PRODUCTION COMPANY

LEASE N. LUSK 32 STATE

JOHN WEST SURVEYING  
HOBBS, NEW MEXICO  
(505) 393-3117