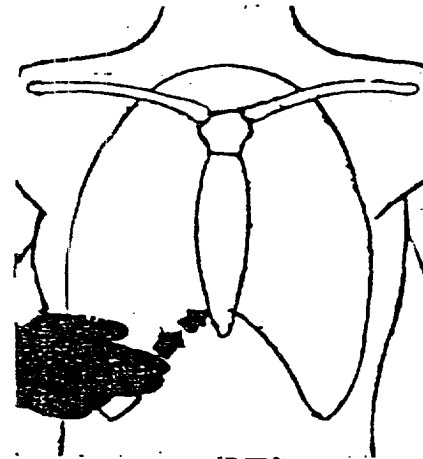


Locate Compression Position
Check to be certain airway is
open before starting compressions.
Kneel, facing victim's chest.
With middle and index fingers of
hand nearer victim's legs, locate
lower edge of victim's rib cage on
side closer to you.
Slide fingers up edge of rib cage
to notch at lower end of breastbone.



Place middle finger in notch, and
index finger next to it on the lower
end of breastbone.

