

DISTRICT I
P.O. Box 1980, Hobbs, NM 88241-1980
DISTRICT II
P.O. Box Drawer DD, Artesia, NM 88211-0719
DISTRICT III
1000 Rio Brazos Rd., Aztec, NM 87410
DISTRICT IV
P.O. Box 2088, Santa Fe, NM 87504-2088

State of New Mexico
Energy, Minerals and Natural Resources Department

Form C-101
Revised February 10, 1999
Instructions on back
Submit to Appropriate District Office
State Lease - 6 Copies
Fee Lease - 5 Copies

OIL CONSERVATION DIVISION

P.O. Box 2088
Santa Fe, New Mexico 87504-2088

☐ AMENDED REPORT

APPLICATION FOR PERMIT TO DRILL, RE-ENTER, DEEPEN, PLUGBACK, OR ADD A ZONE

¹ Operator Name and Address CHEVRON USA INC 15 SMITH ROAD, MIDLAND, TX 79705		² OGRID Number 4323
⁴ Property Code 29974		³ API Number 30-025-35953
⁵ Property Name NEW MEXICO 'EA' STATE		⁶ Well No. 2

⁷ Surface Location									
UL or lot no.	Section	Township	Range	Lot.Idn	Feet From The	North/South Line	Feet From The	East/West Line	County
B	24	18-S	37-E		330'	NORTH	1733'	EAST	LEA

⁸ Proposed Bottom Hole Location If Different From Surface									
UL or lot no.	Section	Township	Range	Lot.Idn	Feet From The	North/South Line	Feet From The	East/West Line	County
B	24	18-S	37-E		990'	NORTH	1733'	EAST	LEA
⁹ Proposed Pool 1 WILDCAT TUBB, DRINKARD, ABO					¹⁰ Proposed Pool 2				

¹¹ Work Type Code N	¹² Well Type Code O	¹³ Rotary or C.T. ROTARY	¹⁴ Lease Type Code S	¹⁵ Ground Level Elevation 3685'
¹⁶ Multiple No	¹⁷ Proposed Depth 7800' MD	¹⁸ Formation See Above	¹⁹ Contractor	²⁰ Spud Date 8/1/2002

²¹ Proposed Casing and Cement Program					
SIZE OF HOLE	SIZE OF CASING	WEIGHT PER FOOT	SETTING DEPTH	SACKS OF CEMENT	EST. TOP
14 3/4"	11 3/4"	42#	430'	280	SURFACE
11"	8 5/8"	32#	2850'	970	SURFACE
7 7/8"	5 1/2"	17#	6600'	1310	SURFACE

²² Describe the proposed program. If this application is to DEEPEN or PLUG BACK give the data on the present productive zone and proposed new productive zone. Describe the blowout prevention program, if any. Use additional sheets if necessary.

CEMENTING PROGRAM:

SURFACE CASING: 280 SACKS CLASS C W/2% CaCl₂ (14.8 CMT WEIGHT, 1.34 CMT YIELD)

INTERMEDIATE CASING: 720 SACKS 35/65 POZ, (12.8 CMT WEIGHT, 1.94 CMT YIELD) W/6% GEL, 5% SALT, 1/4# CELL
250 SACKS CLASS H (15.6 CMT WEIGHT, 1.18 CMT YIELD)

PRODUCTION CASING: 1020 SACKS CLASS H 35/65 POZ W/6% GEL, 5% SALT, 1/4# CELL (12.4 CMT WEIGHT, 2.14 CMT YIELD)
290 SACKS CLASS H 50/50 POZ W/2% GEL, 5% SALT, 1/4# CELL (14.2 CMT WEIGHT, 1.35 CMT YIELD)

Permit Expires 1 Year From Approval
Date Unless Drilling Underway

²³ I hereby certify that the rules and regulations of the Oil Conservation Division have been complied with and that the information given above is true and complete to the best of my knowledge and belief.		OIL CONSERVATION DIVISION	
Signature <i>Denise Leake</i>			
Printed Name Denise Leake		Approved By:	
Title Regulatory Specialist		Title: ORIGINAL SIGNED BY PAUL F. KAUTZ PETROLEUM ENGINEER	
Date 7/16/2002		Approval Date: JUL 23 2002 Expiration Date:	
Telephone 915-687-7375		Conditions of Approval: Attached <input type="checkbox"/>	

DISTRICT I
P. O. Box 1980, Hobbs, NM 88240

DISTRICT II
P. O. Drawer DD, Artesia, NM 88210

DISTRICT III
1000 Rio Brazos Rd., Aztec, NM 87410

DISTRICT IV
P. O. Box 2088, Santa Fe, NM 87504-2088

State of New Mexico
Energy, Minerals and Natural Resources Department

Form C-102
Revised February 10, 1994

Instructions on back

OIL CONSERVATION DIVISION
PO Box 2088
Santa Fe, NM 87504-2088

Submit to Appropriate District Office

State Lease-4 copies
Fee Lease-3 copies

☐ AMENDED REPORT

WELL LOCATION AND ACREAGE DEDICATION PLAT

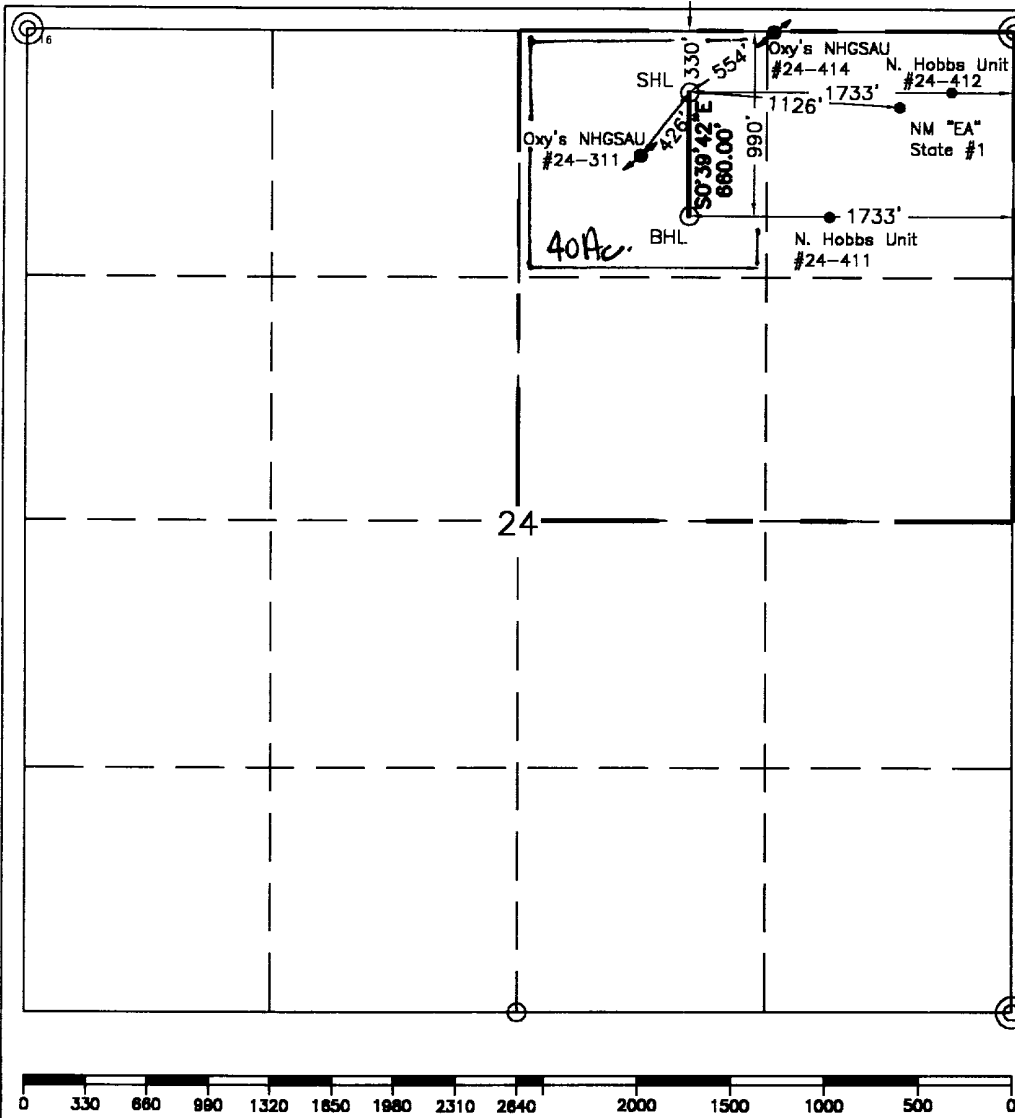
¹ API Number 30-025-35953		² Pool Code 9718497212		³ Pool Name Hobbs, Drinkard	
⁴ Property Code 29974		⁵ Property Name New Mexico "EA" State			⁶ Well Number 2
⁷ GRID No. 22351		⁸ Operator Name Chevron USA, Inc.			⁹ Elevation 3673'

¹⁰ Surface Location									
UL or lot no. B	Section 24	Township 18-S	Range 37-E	Lot Idn	Feet from the 330'	North/South line North	Feet from the East	East/West line 1733'	⁷ County Lea

¹¹ Bottom Hole Location If Different From Surface									
UL or lot no. B	Section 24	Township 18-S	Range 37-E	Lot Idn	Feet from the 990'	North/South line North	Feet from the East	East/West line 1733'	⁷ County Lea

¹² Dedicated Acres 40	¹³ Joint or Infill	¹⁴ Consolidation Code	¹⁵ Order No.
-------------------------------------	-------------------------------	----------------------------------	-------------------------

NO ALLOWABLE WILL BE ASSIGNED TO THIS COMPLETION UNTIL ALL INTERESTS HAVE BEEN CONSOLIDATED
OR A NON-STANDARD UNIT HAS BEEN APPROVED BY THE DIVISION.



¹⁶ OPERATOR CERTIFICATION I hereby certify that the information contained herein is true and complete to the best of my knowledge and belief.	
Signature <i>Ted Tipton</i>	Printed Name Ted Tipton
Position Manager of Drilling Department	
Company Chevron USA, Inc.	
Date July 11, 2002	
¹⁷ SURVEYOR CERTIFICATION I hereby certify that the well location shown on this plat was plotted from field notes of actual surveys made by me or under my supervision, and that the same is true and correct to the best of my knowledge and belief.	
Date Surveyed July 8, 2002	
Signature & Seal of Professional Surveyor <i>John S. Piper</i>	
Certificate No. 7254 John S. Piper	
Sheet 1 of 1	

○ = Staked Location • = Producing Well ● = Injection Well ✕ = Water Supply Well ◆ = Plugged & Abandon Well
⊙ = Found Section Corner, 2 or 3" Iron Pipe & GLO B.C. ○ = Found 1/4 Section Corner, 1" Iron Pipe & GLO B.C.

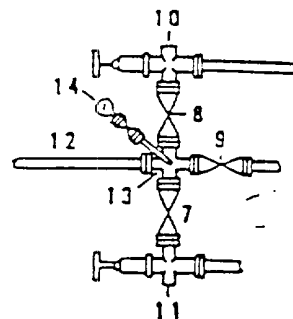
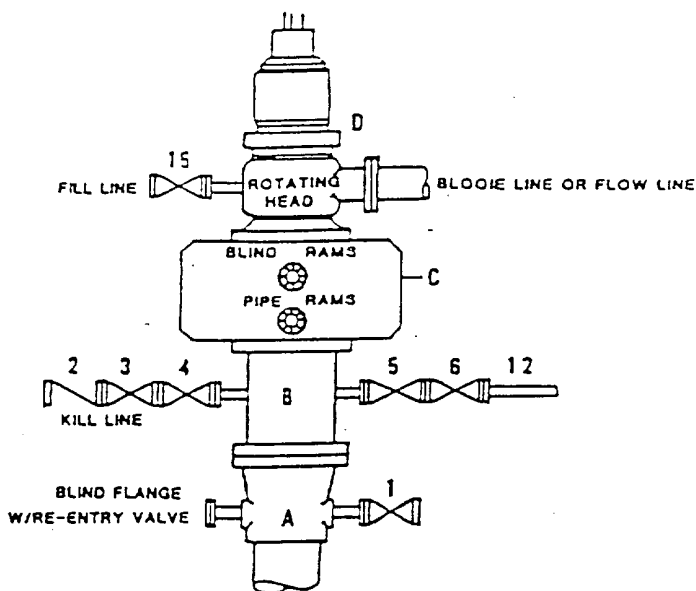
ADDITIONAL INFORMATION ON THE LOCATION

State Plane Coordinates 634559.22 (1927=634499.43)SHL Northing 633899.27 (1927=633839.47)BHL		889242.83 (1927=848063.34)SHL Easting 889250.45 (1927=848070.93)BHL	
Latitude 32°44'21.601" (1927=32°44'21.198")SHL 32°44'15.071" (1927=32°44'14.668")BHL		Longitude 103°12'06.740" (1927=103°12'04.983")SHL 103°12'06.733" (1927=103°12'04.977")BHL	
Zone East	North American Datum 1983/93	Combined Grid Factor 0.99987348	Coordinate File NM_AE_ST.CR5
Drawing File Nm_EA_St2.dwg		Field Book Lea #23, Pg. 1	

DRILLING CONTROL CONDITION II-B 3000 WP

FOR AIR DRILLING OR
WHERE NITROGEN OR AIR BLOWS ARE EXPECTED

H₂S TRIM REQUIRED
YES _____ NO X



DRILLING CONTROL

MATERIAL LIST - CONDITION II - B

- | | |
|-------------|-----------------------------------------------------------------------------------------------------------------------------------------------------------------------------------------------------|
| A | Texaco Wellhead |
| B | 3000# W.P. drilling spool with a 2" minimum flanged outlet for kill line and 3" minimum flanged outlet for choke line. |
| C | 3000# W.P. Dual ram type preventer, hydraulic operated with 1" steel, 3000# W.P. control lines (where sub-structure height is adequate, 2 - 3000# W.P. single ram type preventers may be utilized). |
| D | Rotating Head with fill up outlet and extended Blooe Line. |
| 1,3,4, 7,8, | 2" minimum 3000# W.P. flanged full opening steel gate valve, or Halliburton Lo Torc Plug valve. |
| 2 | 2" minimum 3000# W.P. back pressure valve. |
| 5,6,9 | 3" minimum 3000# W.P. flanged full opening steel gate valve, or Halliburton Lo Torc Plug valve. |
| 12 | 3" minimum schedule 80, Grade "B", seamless line pipe. |
| 13 | 2" minimum x 3" minimum 3000# W.P. flanged cross. |
| 10,11 | 2" minimum 3000# W.P. adjustable choke bodies. |
| 14 | Cameron Mud Gauge or equivalent (location optional in choke line). |
| 15 | 2" minimum 3000# W.P. flanged or threaded full opening steel gate valve, or Halliburton Lo Torc Plug valve. |



TEXACO, INC.
MIDLAND DIVISION
MIDLAND, TEXAS



SCALE	DATE	EST NO	DRG NO
DRAWN BY			
CHECKED BY			
APPROVED BY			

EXHIBIT C

ELF 9/24/02
ABOVE DATE DOES NOT
INDICATE WHEN
CONFIDENTIAL LOGS
WILL BE RELEASED