

District I
PO Box 1980, Hobbs, NM 88241-1980
District II
811 S. 1st Street, Artesia, NM 88210-2834
District III
1000 Rio Brazos Rd., Aztec, NM 87410
District IV
2040 South Pacheco, Santa Fe, NM 87505

State of New Mexico
Energy, Minerals & Natural Resources Department

OIL CONSERVATION DIVISION
2040 South Pacheco
Santa Fe, NM 87505

Form C-101
Revised October 18, 1994
Instructions on back
Submit to Appropriate District Office
State Lease - 6 Copies
Fee Lease - 5 Copies

☐ AMENDED REPORT

APPLICATION FOR PERMIT TO DRILL, RE-ENTER, DEEPEN, PLUGBACK, OR ADD A ZONE

¹ Operator name and Address Occidental Permian Limited Partnership P.O. Box 4294 Houston, TX 77210-4294		² OGRID Number 157984
⁴ Property Code 19520	⁵ Property Name North Hobbs G/SA Unit	³ API Number 30-0 25 35 999
		⁶ Well No. 944

⁷ Surface Location									
UL or lot no.	Section	Township	Range	Lot. Idn	Feet from the	North/South Line	Feet from the	East/West line	County
I	29	18-S	38-E		1528	South	854	East	Lea

⁸ Proposed Bottom Hole Location If Different From Surface									
UL or lot no.	Section	Township	Range	Lot. Idn	Feet from the	North/South Line	Feet from the	East/West line	County
I	32	18-S	38-E		1581	South	1014	East	Lea

⁹ Proposed Pool 1 Hobbs; Grayburg - San Andres	¹⁰ Proposed Pool 2
--------------------------------------------------------------	-------------------------------

¹¹ Work Type Code N	¹² Well Type Code O	¹³ Cable/Rotary R	¹⁴ Lease Type Code P	¹⁵ Ground Level Elevation 3644'
¹⁶ Multiple No	¹⁷ Proposed Depth 4200'	¹⁸ Formation San Andres	¹⁹ Contractor Key Energy	²⁰ Spud Date September, 2002

²¹ Proposed Casing and Cement Program					
Hole Size	Casing Size	Casing weight/foot	Setting Depth	Sacks of Cement	Estimated TOC
20	16	Conductor	40	50	Surface
13-3/4	9-5/8	32	1600	950	Surface
8-3/4	7	23	4200	1100	Surface

²² Describe the proposed program. If this application is to DEEPEN or PLUG BACK give the data on the present productive zone and proposed new productive zone. Describe the blowout prevention program, if any. Use additional sheets if necessary

See attached for proposed drilling program
BOP Program 3000# Ram Preventer

Permit Expires _____ Year _____ Approval
Date Unless Drilling Underway

Well to be drilled as a horizontal well in order to drain a thin, areally extensive pay zone.

NOTE: Oil or brine cuttings/mud will be disposed offsite; freshwater/polymer cuttings to be encapsulated onsite

²³ I hereby certify that the information given above is true and complete to the best of my knowledge and belief. Signature: <i>Mark Stephens</i> Printed name: Mark Stephens Title: Business Analyst (SG)	OIL CONSERVATION DIVISION Approved by: <i>Chris Williams</i> Title: ORIGINAL SIGNED BY CHRIS WILLIAMS Expiration Date: SEP 13 2002 DISTRICT SUPERVISOR/GENERAL MANAGER
--------------------------------------------------------------------------------------------------------------------------------------------------------------------------------------------------------------------------------	---------------------------------------------------------------------------------------------------------------------------------------------------------------------------------------

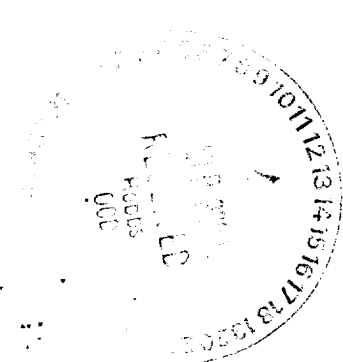
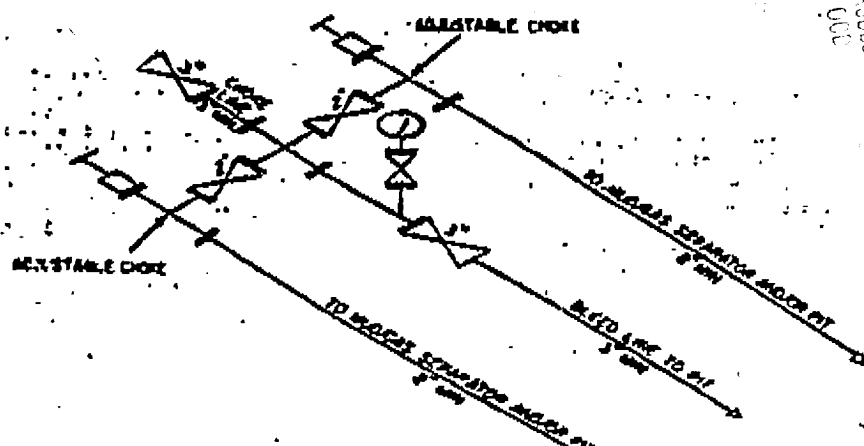
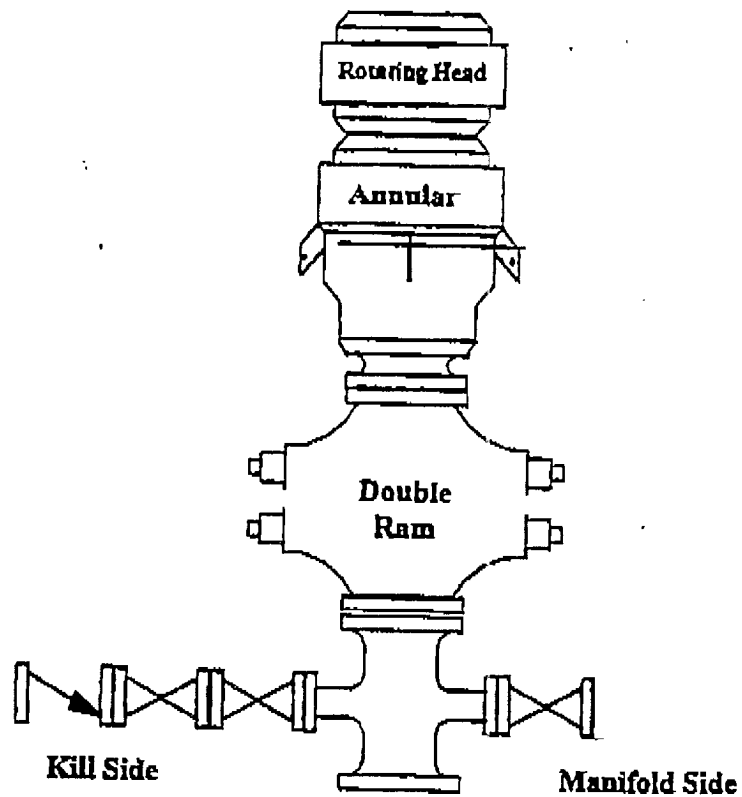
[Handwritten signature]

Proposed Drilling Program
North Hobbs G/SA Unit No. 944
Letter I, Sec. 29, T-18-S, R-38-E (SHL)
Letter I, Sec. 32, T-18-S, R-38-E (BHL)
Lea County, New Mexico

A 16" conductor will be set and cemented to surface with 50 sx. cement. A 13-3/4" hole will be drilled from surface to approximately 1600'. This will allow for protection of all water zones and casing off of the Red Beds. A full string of 9-5/8", 32#, J-55 surface casing will be run and set 50' into the top of the Rustler Anhydrite with cement circulated to surface. The cement will be allowed to set for a minimum of eight (8) hours (minimum 500# compressive strength) and will then be tested to 1000 psi for 30 minutes before drilling resumes. After the casing is run and cemented, weld on 9-5/8" X 11" 3M casinghead housing and nipple up BOP stack (3000# Ram Preventer).

An 8-3/4" hole will be drilled out from surface casing point (1600') to +/- 4200' TVD. A full string of 7", 23#, J-55 casing will be run to +/-4200' TVD and cemented to surface (test casing to 1400 psi for 30 minutes).

A 6-1/8" horizontal hole will be drilled out from the 7" casing point. The 6-1/8" horizontal hole will be up to 3700' in length and will be completed open hole.



DISTRICT II
P.O. Drawer DD, Artesia, NM 88211-0719

DISTRICT III
1000 Rio Brazos Rd., Aztec, NM 87410

DISTRICT IV
P.O. BOX 2088, SANTA FE, N.M. 87504-2088

OIL CONSERVATION DIVISION
P.O. Box 2088
Santa Fe, New Mexico 87504-2088

☐ AMENDED REPORT

WELL LOCATION AND ACREAGE DEDICATION PLAT

API Number 30-025-35999	Pool Code 31920	Pool Name HOBBS: GRAYBURG - SAN ANDRES
Property Code 19520	Property Name NORTH HOBBS G/SA UNIT	Well Number 944
OGRID No. 157984	Operator Name OCCIDENTAL PERMIAN LIMITED PARTNERSHIP	Elevation 3644

Surface Location

UL or lot No.	Section	Township	Range	Lot Idn	Feet from the	North/South line	Feet from the	East/West line	County
I	29	18 S	38 E		1528	SOUTH	854	EAST	LEA

Bottom Hole Location If Different From Surface

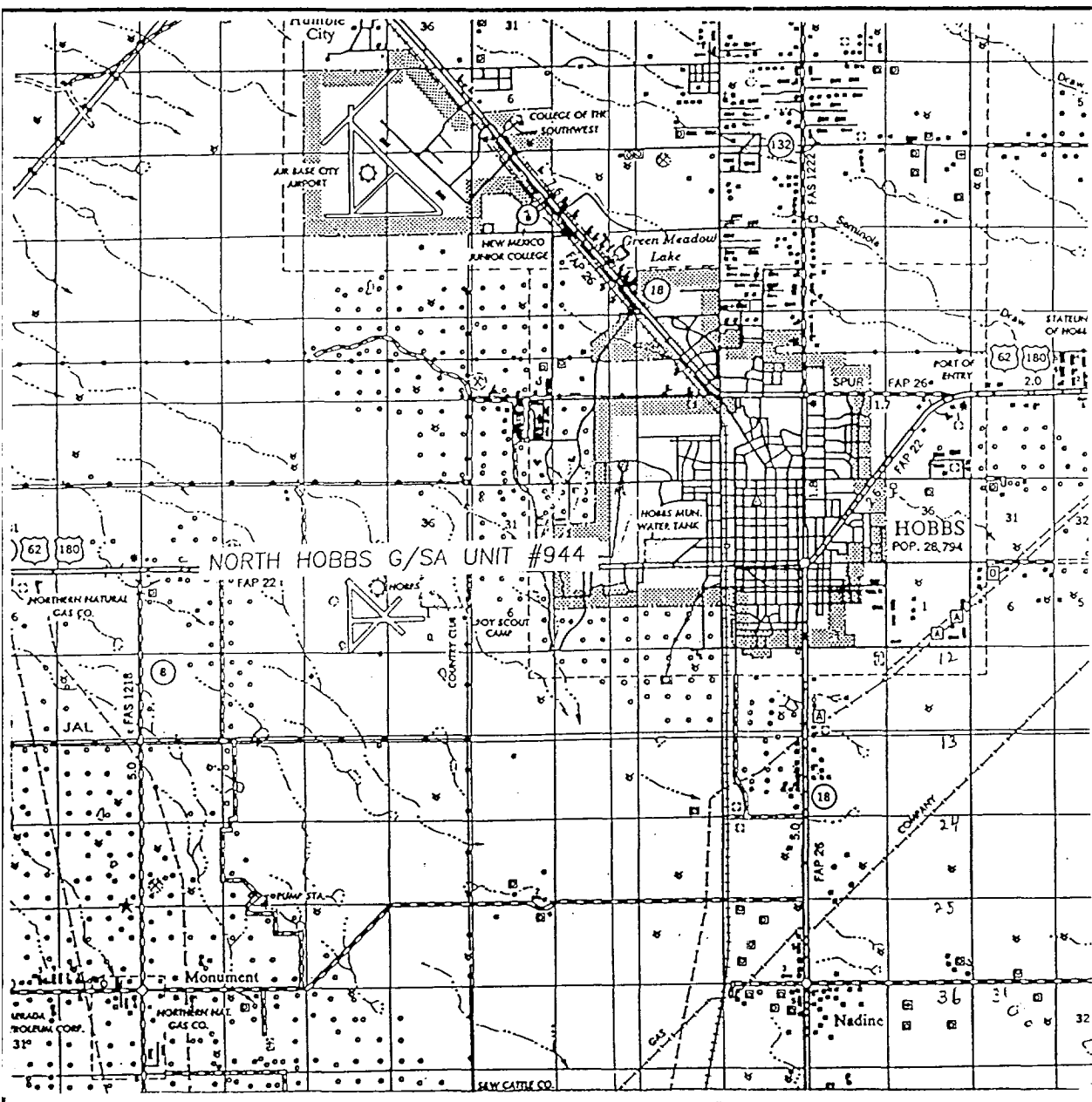
UL or lot No.	Section	Township	Range	Lot Idn	Feet from the	North/South line	Feet from the	East/West line	County
I	32	18 S	38 E		1581	SOUTH	1014	EAST	LEA

Dedicated Acres	Joint or Infill	Consolidation Code	Order No.
160	I	U	

NO ALLOWABLE WILL BE ASSIGNED TO THIS COMPLETION UNTIL ALL INTERESTS HAVE BEEN CONSOLIDATED
OR A NON-STANDARD UNIT HAS BEEN APPROVED BY THE DIVISION

<p>(TRUE BRG.) S00°39'W - 499' SURF. TO PROP. PENETRATION PT. (TRUE BRG.) S00°20'W - 5234' SURF. TO PROP. BOTTOM HOLE LOC.</p> <p>DETAIL</p> <p>3645.6' 3644.8' 3644.4' 3645.7'</p> <p>SEE DETAIL</p> <p>1528' 1030' 854' 849'</p> <p>PROPOSED SURFACE LOC. NAD 27 NM EAST ZONE N=625887.2 E=859550.1</p> <p>PROPOSED PENETRATION POINT @ 3679.4 TVD</p> <p>29 28 32 33</p> <p>1014'</p> <p>1581'</p> <p>330' UNIT BOUNDARY NORTH HOBBS (GRAYBURG - OFFSET LINE SAN ANDRES UNIT BOUNDARY</p>	<p>OPERATOR CERTIFICATION</p> <p>I hereby certify the the information contained herein is true and complete to the best of my knowledge and belief.</p> <p><u>Mark Stephens</u> Signature</p> <p>Mark Stephens Printed Name</p> <p>Business Analyst (SG) Title</p> <p>September 11, 2002 Date</p> <p>SURVEYOR CERTIFICATION</p> <p>I hereby certify that the well location shown on this plat was plotted from field notes of actual surveys made by me or under my supervision and that the same is true and correct to the best of my belief.</p> <p>AUGUST 15, 2002 Date Surveyed</p> <p>LA Signature & Seal of Professional Surveyor</p> <p><u>Gary E. Edson</u> 9/11/02 02-11-0586</p> <p>Certificate No. RONALD L. EIDSON 3239 GARY EIDSON 12641</p> <p>REV. - 9/10/02</p>
--------------------------------------------------------------------------------------------------------------------------------------------------------------------------------------------------------------------------------------------------------------------------------------------------------------------------------------------------------------------------------------------------------------------------------------------------------------------------------------------------------------------------------------------------	--------------------------------------------------------------------------------------------------------------------------------------------------------------------------------------------------------------------------------------------------------------------------------------------------------------------------------------------------------------------------------------------------------------------------------------------------------------------------------------------------------------------------------------------------------------------------------------------------------------------------------------------------------------------------------------------------------------------------------------------------------------------------------------------------------------------------------------------------

VICINITY MAP

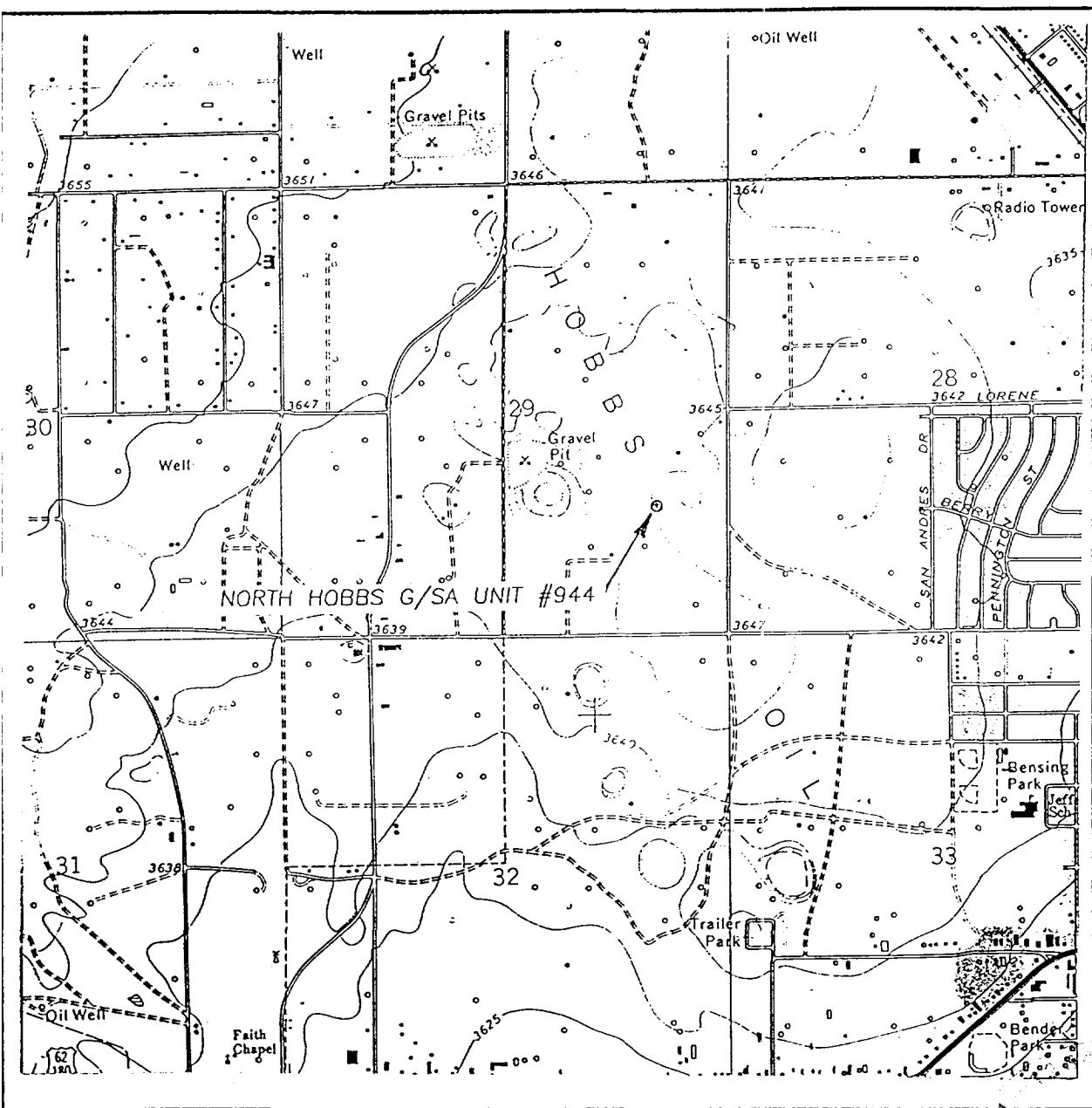


SCALE: 1" = 2 MILES

SEC. 29 TWP. 18-S RGE. 38-E
 SURVEY N.M.P.M.
 COUNTY LEA
 DESCRIPTION 1528' FSL & 854' FEL
 ELEVATION 3644
 OPERATOR OCCIDENTAL PERMIAN LIMITED PARTNERSHIP
 LEASE NORTH HOBBS G/SA UNIT

JOHN WEST SURVEYING
 HOBBS, NEW MEXICO
 (505) 393-3117

LOCATION VERIFICATION MAP



SCALE: 1" = 2000'

CONTOUR INTERVAL:
HOBBS, N.M. - 5'

SEC. 29 TWP. 18-S RGE. 38-E

SURVEY N.M.P.M.

COUNTY LEA

DESCRIPTION 1528' FSL & 854' FEL

ELEVATION 3644

OPERATOR OCCIDENTAL PERMIAN
LIMITED PARTNERSHIP

LEASE NORTH HOBBS G/SA UNIT

U.S.G.S. TOPOGRAPHIC MAP
HOBBS, N.M.

JOHN WEST SURVEYING
HOBBS, NEW MEXICO
(505) 393-3117

District I
1625 N. French Dr., Hobbs, NM 88240
District II
811 South First, Artesia, NM 88210
District III
1000 Rio Brazos Rd., Aztec, NM 87410
District IV
2040 South Pacheco, Santa Fe, NM 87505

State of New Mexico
Energy, Minerals & Natural Resources Department

OIL CONSERVATION DIVISION
2040 South Pacheco
Santa Fe, NM 87505

Form C-102
Revised October 18, 1994
Instructions on back
Submit to Appropriate District Office
State Lease - 4 Copies
Fee Lease - 3 Copies

AMENDED REPORT
Revised BHL

WELL LOCATION AND ACREAGE DEDICATION PLAT

API Number <i>30-025 35999</i>	Pool Code <i>31920</i>	Pool Name <i>Hobbs; Grayburg - San Andres</i>
Property Code <i>19520</i>	Property Name <i>North Hobbs (GSA) Unit</i>	Well Number <i>944</i>
OGRID No. <i>157984</i>	Operator Name <i>Occidental Permian Limited Partnership</i>	Elevation <i>3644'</i>

Surface Location

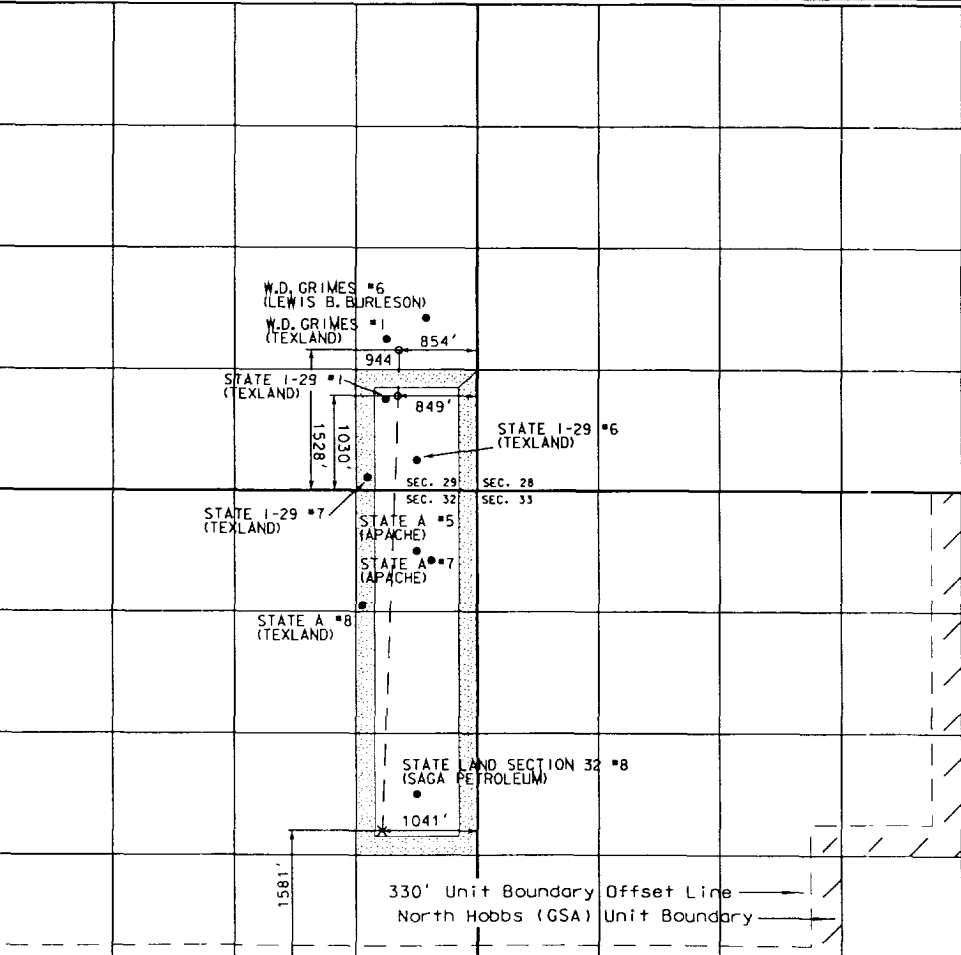
UL or lot no.	Section	Township	Range	Lot Idn.	Feet from the	North/South line	Feet from the	East/West line	County
<i>1</i>	<i>29</i>	<i>18-S</i>	<i>38-E</i>		<i>1528</i>	<i>South</i>	<i>854</i>	<i>East</i>	<i>Lea</i>

Bottom Hole Location If Different From Surface

UL or lot no.	Section	Township	Range	Lot Idn.	Feet from the	North/South line	Feet from the	East/West line	County
<i>1</i>	<i>32</i>	<i>18-S</i>	<i>38-E</i>		<i>1581</i>	<i>South</i>	<i>1014</i>	<i>East</i>	<i>Lea</i>

Dedicated Acres	Joint or Infill	Consolidation Code	Order No.
<i>160</i>	<i>1</i>	<i>U</i>	

NO ALLOWABLE WILL BE ASSIGNED TO THIS COMPLETION UNTIL ALL INTERESTS HAVE BEEN CONSOLIDATED
OR A NON-STANDARD UNIT HAS BEEN APPROVED BY THE DIVISION

	OPERATOR CERTIFICATION <i>I hereby certify that the information contained herein is true and complete to the best of my knowledge and belief.</i> <i>Mark Stephens</i> Signature <i>Mark Stephens</i> Printed Name <i>Business Analyst (SG)</i> Title <i>September 11, 2002</i> Date
	SURVEYOR CERTIFICATION <i>I hereby certify that the well location shown on this plat was plotted from field notes of actual surveys made by me or under my supervision, and that the same is true and correct to the best of my belief.</i> Date of Survey Signature and Seal of Professional Surveyor Certificate Number

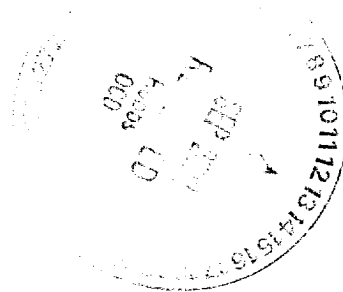
NOTIFICATION LIST

Texland Petroleum-Hobbs, LLC
777 Main, Suite 3200
Ft. Worth, TX 76102

Lewis B. Burleson, Inc.
P.O. Box 2479
Midland, TX 79705

Saga Petroleum LLC
415 W. Wall, Suite 835
Midland, TX 79701

Apache Corporation
2000 Post Oak Blvd., Ste. 100
Houston, TX 77056-4400



SENDER: COMPLETE THIS SECTION

- Complete items 1, 2, and 3. Also complete item 4 if Restricted Delivery is desired.
- Print your name and address on the reverse so that we can return the card to you.
- Attach this card to the back of the mailpiece, or on the front if space permits.

1. Article Addressed to:

Texland Petroleum-Hobbs, LLC
777 Main, Suite 3200
Ft. Worth, TX 76102

2. Article Number

(Transfer from service label)

7001 0320 0002 0354 8889

PS Form 3811, March 2001

Domestic Return Receipt

102595-01-M-1424

COMPLETE THIS SECTION ON DELIVERY

A. Received by (Please Print Clearly) B. Date of Delivery

C. Signature

X☐ Agent☐ Addressee

D. Is delivery address different from item 1?

☐ Yes

If YES, enter delivery address below:

☐ No

3. Service Type

☒ Certified Mail☐ Express Mail☐ Registered☒ Return Receipt for Merchandise☐ Insured Mail☐ C.O.D.

4. Restricted Delivery? (Extra Fee)

☐ Yes**SENDER: COMPLETE THIS SECTION**

- Complete items 1, 2, and 3. Also complete item 4 if Restricted Delivery is desired.
- Print your name and address on the reverse so that we can return the card to you.
- Attach this card to the back of the mailpiece, or on the front if space permits.

1. Article Addressed to:

Lewis B. Burleson, Inc.
P.O. Box 2479
Midland, TX 79705

2. Article Number

(Transfer from service label)

7001 0320 0002 0354 8896

PS Form 3811, March 2001

Domestic Return Receipt

102595-01-M-1424

COMPLETE THIS SECTION ON DELIVERY

A. Received by (Please Print Clearly) B. Date of Delivery

C. Signature

X☐ Agent☐ Addressee

D. Is delivery address different from item 1?

☐ Yes

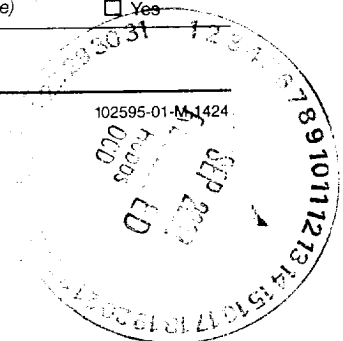
If YES, enter delivery address below:

☐ No

3. Service Type

☒ Certified Mail☐ Express Mail☐ Registered☒ Return Receipt for Merchandise☐ Insured Mail☐ C.O.D.

4. Restricted Delivery? (Extra Fee)

☐ Yes

SENDER: COMPLETE THIS SECTION

- Complete items 1, 2, and 3. Also complete item 4 if Restricted Delivery is desired.
- Print your name and address on the reverse so that we can return the card to you.
- Attach this card to the back of the mailpiece, or on the front if space permits.

1. Article Addressed to:

Saga Petroleum LLC
415 W. Wall, Suite 835
Midland, TX 79701

2. Article Number

(Transfer from service label)

7001 0320 0002 0354 8933

PS Form 3811, March 2001

Domestic Return Receipt

102595-01-M-1424

COMPLETE THIS SECTION ON DELIVERY

A. Received by (Please Print Clearly)

B. Date of Delivery

C. Signature

X☐ Agent☐ Addressee

D. Is delivery address different from item 1?

If YES, enter delivery address below:

☐ Yes☐ No

3. Service Type

☒ Certified Mail☐ Express Mail☐ Registered☒ Return Receipt for Merchandise☐ Insured Mail☐ C.O.D.

4. Restricted Delivery? (Extra Fee)

☐ Yes**SENDER: COMPLETE THIS SECTION**

- Complete items 1, 2, and 3. Also complete item 4 if Restricted Delivery is desired.
- Print your name and address on the reverse so that we can return the card to you.
- Attach this card to the back of the mailpiece, or on the front if space permits.

1. Article Addressed to:

Apache Corporation
2000 Post Oak Blvd.
Ste. 100
Houston, TX 77056-4400

2. Article Number

(Transfer from service label)

7001 0320 0002 0354 8940

PS Form 3811, March 2001

Domestic Return Receipt

COMPLETE THIS SECTION ON DELIVERY

A. Received by (Please Print Clearly)

B. Date of Delivery

C. Signature

X☐ Agent☐ Addressee

D. Is delivery address different from item 1?

If YES, enter delivery address below:

☐ Yes☐ No

3. Service Type

☒ Certified Mail☐ Express Mail☐ Registered☒ Return Receipt for Merchandise☐ Insured Mail☐ C.O.D.

4. Restricted Delivery? (Extra Fee)

☐ Yes