

Submit 3 Copies  
to Appropriate  
District Office

State of New Mexico  
Energy, Minerals and Natural Resources Department

Form C-103  
Revised 1-1-89

**DISTRICT I**

P.O. Box 1980, Hobbs NM 88241-1980

**DISTRICT II**

P.O. Drawer DD, Artesia, NM 88210

**DISTRICT III**

1000 Rio Brazos Rd., Aztec, NM 87410

**OIL CONSERVATION DIVISION**

2040 Pacheco St.  
Santa Fe, NM 87505

WELL API NO.

30-025-36046

5. Indicate Type of Lease

STATE ☐

FEE ☒

6. State Oil & Gas Lease No.

7. Lease Name or Unit Agreement Name

Hobbs Deep 'A'

8. Well No.

1

9. Pool name or Wildcat

Wildcat; Tubb, Drinkard, Abo

1. Type of Well:

OIL  
WELL ☒

GAS  
WELL ☐

OTHER

2. Name of Operator

Occidental Permian Limited Partnership

3. Address of Operator

P.O. Box 4294, Houston, TX 77210-4294

4. Well Location

SHL: Unit Letter P : 990 Feet From The South Line and 660 Feet From The East Line  
BHL: P 330 South 660 East  
Section 13 Township 18-S Range 37-E NMPM Lea County

10. Elevation (Show whether DF, RKB, RT, GR, etc.)

3671' GL

11. Check Appropriate Box to Indicate Nature of Notice, Report, or Other Data

**NOTICE OF INTENTION TO:**

PERFORM REMEDIAL WORK ☐

PLUG AND ABANDON ☐

TEMPORARILY ABANDON ☐

CHANGE PLANS ☐

PULL OR ALTER CASING ☐

OTHER: ☐

**SUBSEQUENT REPORT OF:**

REMEDIAL WORK ☐ ALTERING CASING ☐

COMMENCE DRILLING OPNS. ☐ PLUG AND ABANDONMENT ☐

CASING TEST AND CEMENT JOB ☐

OTHER: Spud & Run Surface Casing ☒

12. Describe Proposed or Completed Operations (Clearly state all pertinent details, and give pertinent dates, including estimated date of starting any proposed work) SEE RULE 1103.

11/20/02: MI x RU. Spud 13-3/4" hole at 9:30 a.m. (NMOCD notified)

11/21/02 -

11/22/02: Run 39 jts. 9-5/8", 36#, J-55, ST&C casing with 11 centralizers and set at 1545'. Cement with 700 sx. PBCZ followed by 300 sx. Premium Plus. Plug down and circulate 235 sx. to surface. WOC. Cut off casing x weld on wellhead x NU BOP. Test casing, blinds, & choke to 1150 psi for 30 min. Test pipe rams x annular to 1150 psi for 30 min. Drill out cement and resume drilling operations.

I hereby certify that the information above is true and complete to the best of my knowledge and belief.

SIGNATURE Mark Stephens TITLE Business Analyst (SG) DATE 11/26/02

TYPE OR PRINT NAME Mark Stephens TELEPHONE NO. 281/552-1158

(This space for State Use) ORIGINAL SIGNED BY

CHRIS WILLIAMS

OC DISTRICT SUPERVISOR/GENERAL MANAGER

APPROVED BY \_\_\_\_\_ DATE \_\_\_\_\_

CONDITIONS OF APPROVAL, IF ANY:

DEC 03 2002

District I  
PO Box 1980, Hobbs, NM 88241-1980  
District II  
811 S. 1st Street, Artesia, NM 88210-2834  
District III  
1000 Rio Brazos Rd., Aztec, NM 87410  
District IV  
2040 South Pacheco, Santa Fe, NM 87505

State of New Mexico  
Energy, Minerals & Natural Resources Department

**OIL CONSERVATION DIVISION**  
2040 South Pacheco  
Santa Fe, NM 87505

Form C-101  
Revised October 18, 1994  
Instructions on back  
Submit to Appropriate District Office  
State Lease - 6 Copies  
Fee Lease - 5 Copies

☐ AMENDED REPORT

**APPLICATION FOR PERMIT TO DRILL, RE-ENTER, DEEPEN, PLUGBACK, OR ADD A ZONE**

<sup>1</sup> Operator name and Address Occidental Permian Limited Partnership P.O. Box 4294 Houston, TX 77210-4294		<sup>2</sup> OGRID Number 157984
		<sup>3</sup> API Number 30-025-36046
<sup>4</sup> Property Code 30763	<sup>5</sup> Property Name Hobbs Deep 'A'	<sup>6</sup> Well No. 1

**<sup>7</sup> Surface Location**

UL or lot no.	Section	Township	Range	Lot. Idn	Feet from the	North/South Line	Feet from the	East/West line	County
P	13	18-S	37-E		990	South	660	East	Lea

**<sup>8</sup> Proposed Bottom Hole Location If Different From Surface**

UL or lot no.	Section	Township	Range	Lot. Idn	Feet from the	North/South Line	Feet from the	East/West line	County
P	13	18-S	37-E		330	South	660	East	Lea

<sup>9</sup> Proposed Pool 1 Wildcat; Tubb, Drinkard, Abo	<sup>10</sup> Proposed Pool 2
--	-------------------------------

<sup>11</sup> Work Type Code N	<sup>12</sup> Well Type Code O	<sup>13</sup> Cable/Rotary R	<sup>14</sup> Lease Type Code P	<sup>15</sup> Ground Level Elevation 3671'
<sup>16</sup> Multiple No	<sup>17</sup> Proposed Depth 7800'	<sup>18</sup> Formation See No. 9 above	<sup>19</sup> Contractor Key Energy	<sup>20</sup> Spud Date November, 2002

**<sup>21</sup> Proposed Casing and Cement Program**

Hole Size	Casing Size	Casing weight/foot	Setting Depth	Sacks of Cement	Estimated TOC
26	16	Conductor	40	200	Surface
13-3/4	9-5/8	36	1530	1000	Surface
8-3/4	7	26	6570	1250	Surface

<sup>22</sup> Describe the proposed program. If this application is to DEEPEN or PLUG BACK give the data on the present productive zone and proposed new productive zone. Describe the blowout prevention program, if any. Use additional sheets if necessary

See attached for proposed drilling program  
BOP Program 3000# Ram Preventer

Permit Expires 1 Year From Approval  
Date Unless Drilling Underway

Well to be directionally drilled (deviated from vertical) in order to maximize pay exposure

NOTE: Oil or brine cuttings/mud will be disposed offsite; freshwater/polymer cuttings to be encapsulated onsite

<sup>23</sup> I hereby certify that the information given above is true and complete to the best of my knowledge and belief.

Signature:

*Mark Stephens*

Printed name: Mark Stephens

Title: Business Analyst (SG)

**OIL CONSERVATION DIVISION**

Approved by: ORIGINAL SIGNED BY  
CHRIS WILLIAMS

Title: OC DISTRICT SUPERVISOR/GENERAL MANAGER

Approval Date: NOV 08 2002

Expiration Date:

*2 ml*

**Proposed Drilling Program**

**Hobbs Deep 'A' Well No. 1**

**Letter P, Sec. 13, T-18-S, R-37-E (SHL)**

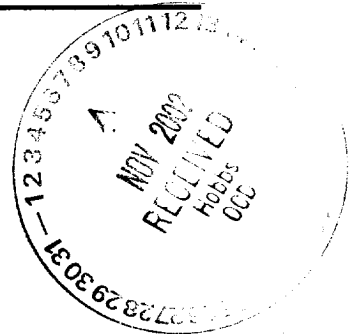
**Letter P, Sec. 13, T-18-S, R-37-E (BHL)**

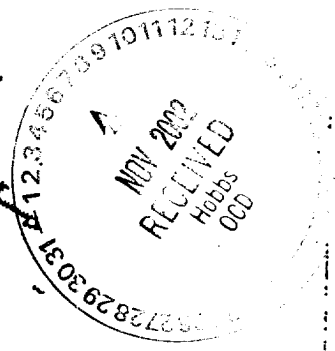
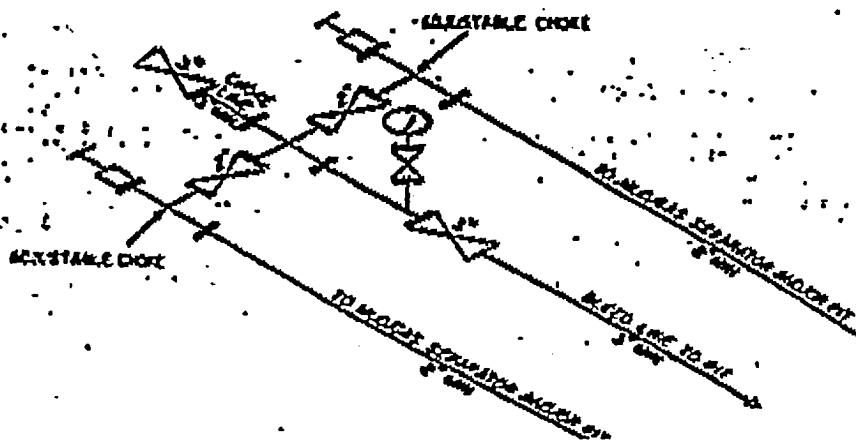
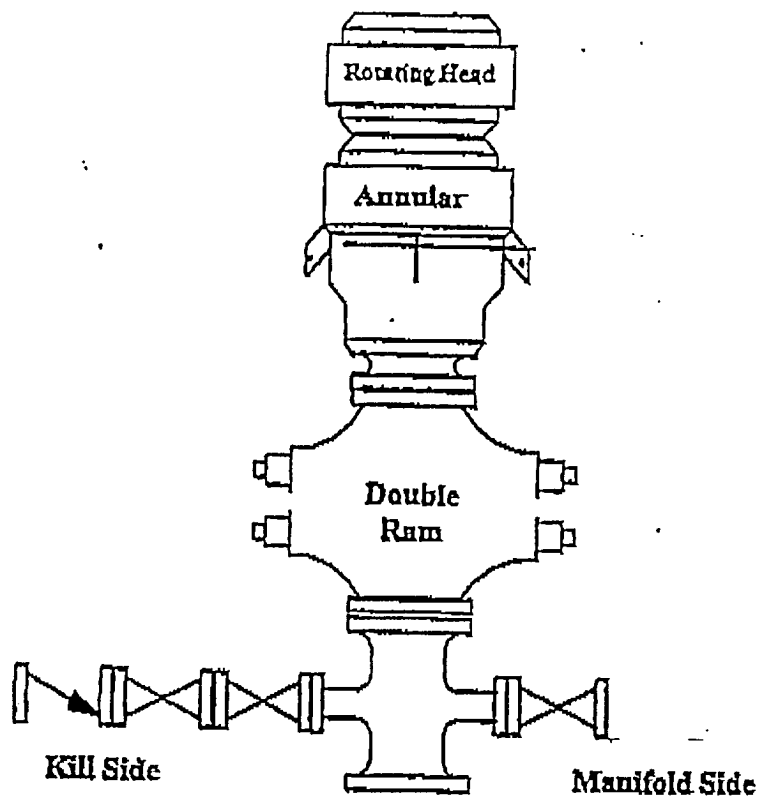
**Lea County, New Mexico**

A 16" conductor will be set and cemented to surface with 200 sx. cement. A 13-3/4" hole will be drilled from surface to approximately 1530'. A full string of 9-5/8", 36#, J-55 surface casing will be run to 1530' TVD with cement circulated to surface. The cement will be allowed to set for a minimum of eight (8) hours (minimum 500# compressive strength) and will then be tested to 1150 psi for 30 minutes before drilling resumes. After the casing is run and cemented, weld on 9-5/8" x 11" 3M casinghead housing and nipple up BOP stack (3000# ram preventer).

An 8-3/4" hole will be drilled out from surface casing point (1530') to +/- 6570' TVD (kicking off from vertical at approximately 6100' TVD). A full string of 7", 26#, J-55 casing will be run to +/- 6570' TVD and cemented to surface (test casing to 1500 psi for 30 minutes).

A 6-1/8" horizontal hole will be drilled out from the 7" casing point to +/- 7620' TVD (7765' MD). The 6-1/8" horizontal hole will be completed open hole.





DISTRICT I  
P.O. Box 1980, Hobbs, NM 88241-1980

DISTRICT II  
P.O. Drawer DD, Artesia, NM 88211-0719

DISTRICT III  
1900 Rio Brazos Rd., Aztec, NM 87410

DISTRICT IV  
P.O. Box 2066, Santa Fe, N.M. 87504-2066

State of New Mexico  
Energy, Minerals and Natural Resources Department

Form C-102  
Revised February 10, 1994  
Submit to Appropriate District Office  
State Lease - 4 Copies  
Fee Lease - 3 Copies

OIL CONSERVATION DIVISION

P.O. Box 2088  
Santa Fe, New Mexico 87504-2088

☐ AMENDED REPORT

WELL LOCATION AND ACREAGE DEDICATION PLAT

API Number <b>30-025-36046</b>	Pool Code <b>97712</b>	Pool Name <b>WILDCAT; ABO</b>
Property Code <b>30763</b>	Property Name <b>HOBBS DEEP "A"</b>	Well Number <b>1</b>
OGRID No. <b>157984</b>	Operator Name <b>OCCIDENTAL PERMIAN LIMITED PARTNERSHIP</b>	Elevation <b>3671'</b>

Surface Location

UL or lot No.	Section	Township	Range	Lot Idn	Feet from the	North/South line	Feet from the	East/West line	County
P	13	18 S	37 E		990	SOUTH	660	EAST	LEA

Bottom Hole Location If Different From Surface

UL or lot No.	Section	Township	Range	Lot Idn	Feet from the	North/South line	Feet from the	East/West line	County
P	13	18 S	37 E		330	SOUTH	660	EAST	LEA

Dedicated Acres	Joint or Infill	Consolidation Code	Order No.
40			

NO ALLOWABLE WILL BE ASSIGNED TO THIS COMPLETION UNTIL ALL INTERESTS HAVE BEEN CONSOLIDATED  
OR A NON-STANDARD UNIT HAS BEEN APPROVED BY THE DIVISION

<p>(S01°16'E - 327.1') TRUE BRG. FROM SURF. LOC. TO PENETRATION PT. (S01°16'E - 660.0') TRUE BRG. FROM SURF. LOC. TO BOTTOM HOLE LOC.</p>		<p>DETAIL</p> <p>3672.1' 3672.7' 3671.1' 3670.2'</p>	
<p>PROPOSED SURFACE LOC. GEODETIC COORDINATES NAD 27 NME Y = 635824.8 X = 849120.5 LAT. = 32°44'34.20"N LONG. = 103°11'52.44"W</p>		<p>PROPOSED PENETRATION PT. @ 6969' TVD PROPOSED BOTTOM HOLE LOC. @ 7600' TVD N - 635165.0 E - 849128.0</p>	
<p>SEE DETAIL</p>		<p>660' 660' 660' 660'</p>	

OPERATOR CERTIFICATION

I hereby certify the information contained herein is true and complete to the best of my knowledge and belief.

Mark Stephens  
Signature

Mark Stephens  
Printed Name

Business Analyst (SG)  
Title

October 31, 2002  
Date

SURVEYOR CERTIFICATION

I hereby certify that the well location shown on this plat was plotted from field notes of actual surveys made by me or under my supervision, and that the same is true and correct to the best of my belief.

OCTOBER 9, 2002

Date Surveyed LA

Signature & Seal  
Professional Surveyor

Ronald J. Edson  
10/24/02  
02-11-0666

Certificate No. RONALD J. EDSON 3239  
GARY EDSON 12641

DISTRICT I  
P.O. Box 1980, Hobbs, NM 88241-1980

State of New Mexico  
Energy, Minerals and Natural Resources Department

Form C-102  
Revised February 10, 1994  
Submit to Appropriate District Office  
State Lease - 4 Copies  
Fee Lease - 3 Copies

DISTRICT II  
P.O. Drawer DD, Artesia, NM 88211-0719

DISTRICT III  
1000 Rio Brazos Rd., Aztec, NM 87410

DISTRICT IV  
P.O. BOX 2088, SANTA FE, N.M. 87504-2088

OIL CONSERVATION DIVISION

P.O. Box 2088  
Santa Fe, New Mexico 87504-2088

☐ AMENDED REPORT

WELL LOCATION AND ACREAGE DEDICATION PLAT

API Number <b>30-025-36046</b>	Pool Code <b>✓</b>	Pool Name <b>WILDCAT; DRINKARD</b>
Property Code <b>30763</b>	Property Name <b>HOBBS DEEP "A"</b>	Well Number <b>1</b>
OGRID No. <b>157984</b>	Operator Name <b>OCCIDENTAL PERMIAN LIMITED PARTNERSHIP</b>	Elevation <b>3671'</b>

Surface Location

UL or lot No.	Section	Township	Range	Lot Idn	Feet from the	North/South line	Feet from the	East/West line	County
P	13	18 S	37 E		990	SOUTH	660	EAST	LEA

Bottom Hole Location If Different From Surface

UL or lot No.	Section	Township	Range	Lot Idn	Feet from the	North/South line	Feet from the	East/West line	County
P	13	18 S	37 E		330	SOUTH	660	EAST	LEA
Dedicated Acres 40	Joint or Infill	Consolidation Code	Order No.						

NO ALLOWABLE WILL BE ASSIGNED TO THIS COMPLETION UNTIL ALL INTERESTS HAVE BEEN CONSOLIDATED  
OR A NON-STANDARD UNIT HAS BEEN APPROVED BY THE DIVISION

<p>(S01°16'E - 159.84) TRUE BRG. FROM SURF. LOC. TO PENETRATION PT. (S01°16'E - 660') TRUE BRG. FROM SURF. LOC. TO BOTTOM HOLE LOC.</p>	<p>DETAIL</p> <p>3672.1' 3672.7' 3671.1' 3670.2'</p>	<p>OPERATOR CERTIFICATION</p> <p>I hereby certify the the information contained herein is true and complete to the best of my knowledge and belief.</p> <p><u>Mark Stephens</u> Signature</p> <p>Mark Stephens Printed Name</p> <p>Business Analyst (SG) Title</p> <p>October 31, 2002 Date</p>
<p>PROPOSED SURFACE LOC. GEODETIC COORDINATES NAD 27 NME Y = 635824.8 X = 849120.5 LAT. = 32°44'34.20"N LONG. = 103°11'52.44"W</p>	<p>PROPOSED PENETRATION PT. ● 6652' TVD</p> <p>PROPOSED BOTTOM HOLE LOC. ● 7600' TVD N - 635165.0 E - 849128.0</p>	<p>SURVEYOR CERTIFICATION</p> <p>I hereby certify that the well location shown on this plat was plotted from field notes of actual surveys made by me or under my supervision and that the same is true and correct to the best of my belief.</p> <p>OCTOBER 9, 2002</p> <p>Date Surveyed Signature &amp; Seal Professional Surveyor</p> <p>GARY E. JEDSON NEW MEXICO 02-11-0665</p> <p>Certificate No. RONALD J. JEDSON 3239 GARY E. JEDSON 12641</p>

District IV  
2040 South Pacheco, Santa Fe, NM 87505

OPERATOR CERTIFICATION			
I hereby certify that the information contained herein is true and complete to the best of my knowledge and belief.			
<u>Mark Stephens</u>			
Signature			
<u>Mark Stephens</u>			
Printed Name			
<u>Business Analyst (SG)</u>			
Title			
<u>October 24, 2002</u>			
Date			

SURVEYOR CERTIFICATION			
I hereby certify that the well location shown on this plat was plotted from field notes of actual surveys made by me or under my supervision, and that the same is true and correct to the best of my belief.			
<u>Date of Survey</u>			
<u>Signature and Seal of Professional Surveyor</u>			
<u>Certificate Number</u>			

HOBBS

000

NORTH HOBBS (GBSA)  
UNIT #13-442  
(OPL) → ●

NORTH HOBBS (GBSA)  
UNIT #13-441  
(OPL) → ●

SHL 1 660'

660'

990' 830' 330' 660'

OBHL ●

DISTRICT I  
P.O. Box 1980, Hobbs, NM 88241-1980

State of New Mexico  
Energy, Minerals and Natural Resources Department

Form C-102  
Revised February 10, 1994  
Submit to Appropriate District Office  
State Lease - 4 Copies  
Fee Lease - 3 Copies

DISTRICT II  
P.O. Drawer DD, Artesia, NM 88211-0719

DISTRICT III  
1000 Rio Brazos Rd., Aztec, NM 87410

DISTRICT IV  
P.O. BOX 2088, SANTA FE, N.M. 87504-2088

OIL CONSERVATION DIVISION  
P.O. Box 2088

Santa Fe, New Mexico 87504-2088

☐ AMENDED REPORT

WELL LOCATION AND ACREAGE DEDICATION PLAT

API Number <b>30-025-36046</b>	Pool Code <b>✓</b>	Pool Name <b>WILDCAT; TUBB</b>
Property Code <b>30763</b>	Property Name <b>HOBBS DEEP "A"</b>	Well Number <b>1</b>
OGRID No. <b>157984</b>	Operator Name <b>OCCIDENTAL PERMIAN LIMITED PARTNERSHIP</b>	Elevation <b>3671'</b>

Surface Location

UL or lot No.	Section	Township	Range	Lot Idn	Feet from the	North/South line	Feet from the	East/West line	County
P	13	18 S	37 E		990	SOUTH	660	EAST	LEA

Bottom Hole Location If Different From Surface

UL or lot No.	Section	Township	Range	Lot Idn	Feet from the	North/South line	Feet from the	East/West line	County
P	13	18 S	37 E		330	SOUTH	660	EAST	LEA

Dedicated Acres	Joint or Infill	Consolidation Code	Order No.
40			

NO ALLOWABLE WILL BE ASSIGNED TO THIS COMPLETION UNTIL ALL INTERESTS HAVE BEEN CONSOLIDATED  
OR A NON-STANDARD UNIT HAS BEEN APPROVED BY THE DIVISION

<p>(S01°16'E - 89.0') TRUE BRG. FROM SURF. LOC. TO PENETRATION PT. (S01°16'E - 660') TRUE BRG. FROM SURF. LOC. TO BOTTOM HOLE LOC.</p>	<p>DETAIL</p> <p>3672.1' 3672.7' 3671.1' 3670.2'</p>	<p>OPERATOR CERTIFICATION</p> <p>I hereby certify the the information contained herein is true and complete to the best of my knowledge and belief.</p> <p><u>Mark Stephens</u> Signature</p> <p>Mark Stephens Printed Name</p> <p>Business Analyst (SG) Title</p> <p>October 31, 2002 Date</p>
<p>PROPOSED SURFACE LOC. GEODETIC COORDINATES NAD 27 NME Y = 635824.8 X = 849120.5 LAT. = 32°44'34.20"N LONG. = 103°11'52.44"W</p>	<p>PROPOSED PENETRATION PT. @ 6508' TVD PROPOSED BOTTOM HOLE LOC. @ 7600' TVD N - 635165.0 E - 849128.0</p>	<p>SURVEYOR CERTIFICATION</p> <p>I hereby certify that the well location shown on this plat was plotted from field notes of actual surveys made by me or under my supervision and that the same is true and correct to the best of my belief.</p> <p>OCTOBER 9, 2002</p> <p>Date Surveyed Signature &amp; Seal Professional Surveyor</p> <p>NEW MEXICO 02-11-0668</p> <p>Certificate No. RONALD J. EDSON 3239 GARY EDSON 12641</p>



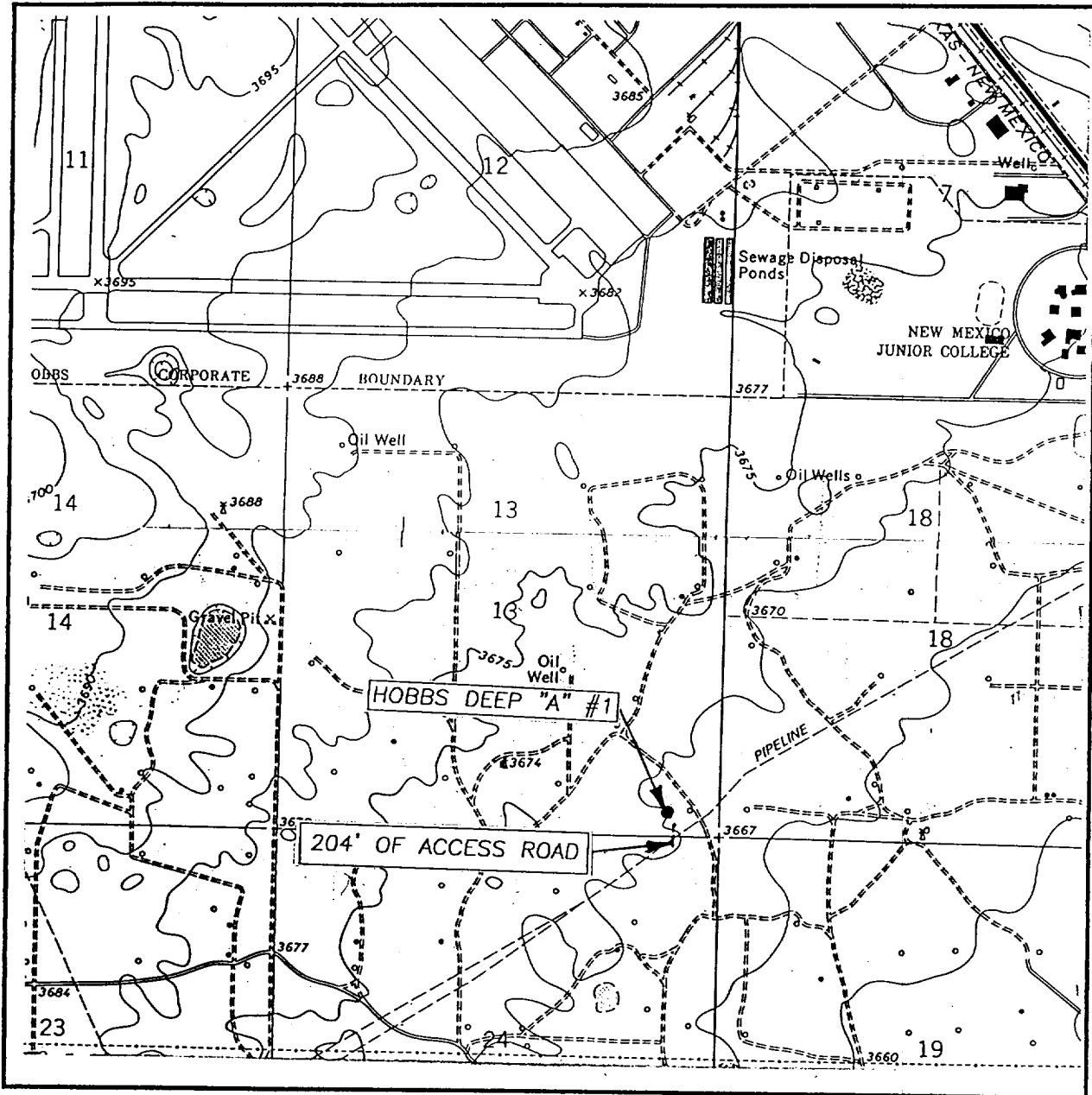
This is a detailed topographic map of the Humble City area in Texas. The map shows the following features:

- Humble City**: Located in the upper right quadrant.
- Air Base City Airport**: Situated south of Humble City.
- Southern Natural Gas Co.**: Labeled near the center-left.
- Maddox Power Co.**: Located near the center.
- Arkansian Junction**: Labeled near the bottom left.
- Monument**: Labeled near the bottom center.
- JAL**: Labeled near the bottom center.
- Northern Natural Gas Co.**: Labeled near the bottom center.
- FAP 22**: Labeled near the bottom right.
- Boy Scout Camp**: Labeled near the bottom right.
- County Club**: Labeled near the bottom right.
- Hobbs Deep "A" #1**: A prominent label in the center-right area, enclosed in a box.
- Scale Bar**: Located at the bottom, indicating distances from 0 to 8.0 miles.
- Roads**: Various roads are shown, including routes 62 and 180.
- Topography**: Contour lines and other geographical features are depicted throughout the map.

SEC. 13 TWP. 18-S RGE. 37-E  
SURVEY \_\_\_\_\_ N.M.P.M.  
COUNTY \_\_\_\_\_ LEA \_\_\_\_\_  
DESCRIPTION 330' FSL & 660' FEL  
ELEVATION \_\_\_\_\_ 3672'  
OPERATOR \_\_\_\_\_ OCCIDENTAL PERMIAN  
LIMITED PARTNERSHIP  
LEASE \_\_\_\_\_ HOBBS DEEP "A"

JOHN WEST SURVEYING  
HOBBS, NEW MEXICO  
(505) 393-3117

# LOCATION VERIFICATION MAP



SCALE: 1" = 2000'

CONTOUR INTERVAL:  
HOBBS, N.M. - 5'

SEC. 13 TWP. 18-S RGE. 37-E

SURVEY \_\_\_\_\_ N.M.P.M.

COUNTY \_\_\_\_\_ LEA

DESCRIPTION 330' FSL & 660' FEL

ELEVATION 3672'

OPERATOR OCCIDENTAL PERMIAN LIMITED PARTNERSHIP

LEASE HOBBS DEEP "A"

U.S.G.S. TOPOGRAPHIC MAP

HOBBS, N.M.

JOHN WEST SURVEYING  
HOBBS, NEW MEXICO  
(505) 393-3117