

DISTRICT I
P.O. Box 1980, Hobbs, NM 88241-1980

State of New Mexico
Energy, Minerals and Natural Resources Department

Form C-102
Revised February 10, 1994
Submit to Appropriate District Office
State Lease - 4 Copies
Fee Lease - 3 Copies

DISTRICT II
P.O. Drawer DD, Artesia, NM 88211-0719

OIL CONSERVATION DIVISION

DISTRICT III
1000 Rio Brazos Rd., Artec, NM 87410

P.O. Box 2088
Santa Fe, New Mexico 87504-2088

DISTRICT IV
P.O. BOX 2088, SANTA FE, N.M. 87504-2088

WELL LOCATION AND ACREAGE DEDICATION PLAT

AMENDED REPORT

API Number <u>30-025-36058</u>	Pool Code 21650	Pool Name E-K Bone Spring
Property Code 27345	Property Name EDITH FEDERAL	Well Number 4
OGRID No. 193407	Operator Name CONCHO RESOURCES, INC.	Elevation 3853'

Surface Location

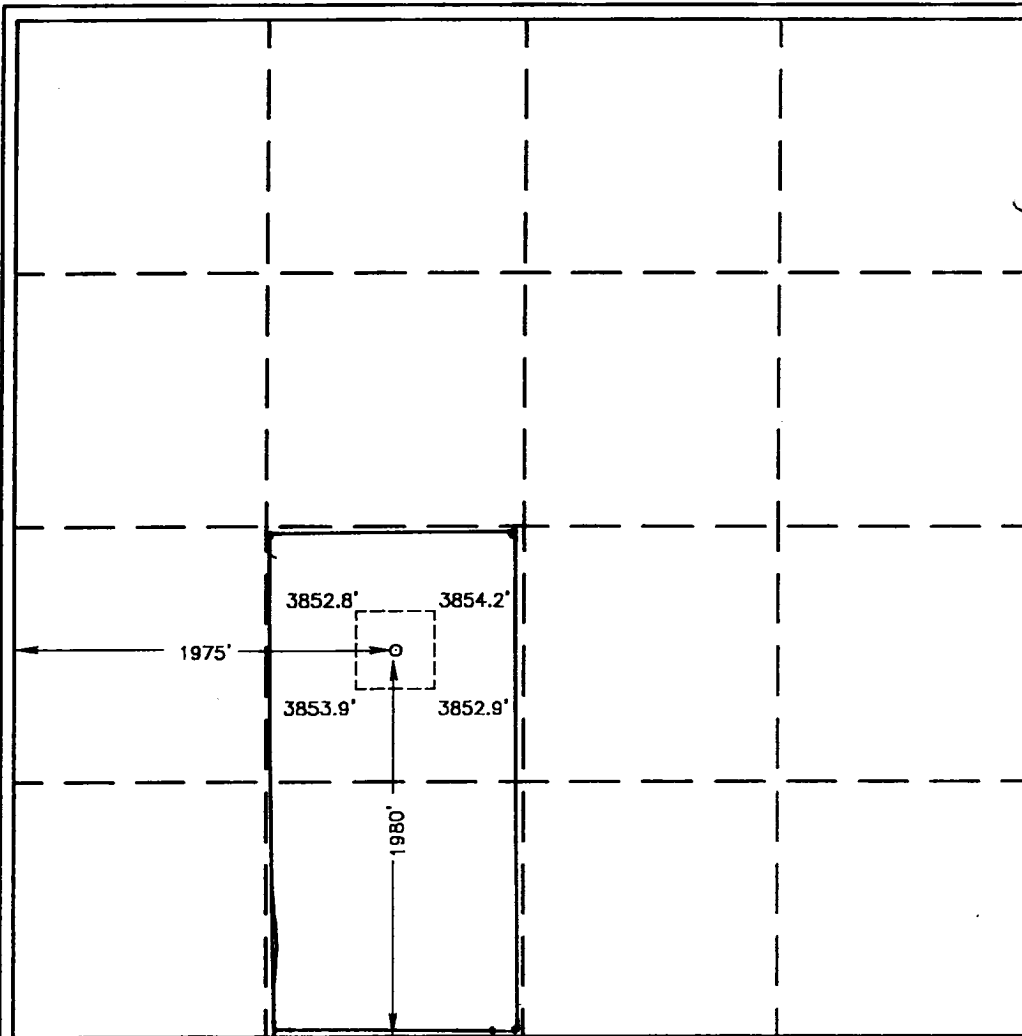
UL or lot No. K	Section 25	Township 18-S	Range 33-E	Lot Idn	Feet from the 1980	North/South line SOUTH	Feet from the 1975	East/West line WEST	County LEA
--------------------	---------------	------------------	---------------	---------	-----------------------	---------------------------	-----------------------	------------------------	---------------

Bottom Hole Location If Different From Surface

UL or lot No.	Section	Township	Range	Lot Idn	Feet from the	North/South line	Feet from the	East/West line	County
---------------	---------	----------	-------	---------	---------------	------------------	---------------	----------------	--------

Dedicated Acres 80	Joint or Infill	Consolidation Code	Order No.
-----------------------	-----------------	--------------------	-----------

NO ALLOWABLE WILL BE ASSIGNED TO THIS COMPLETION UNTIL ALL INTERESTS HAVE BEEN CONSOLIDATED
OR A NON-STANDARD UNIT HAS BEEN APPROVED BY THE DIVISION



OPERATOR CERTIFICATION

I hereby certify the the information
contained herein is true and complete to the
best of my knowledge and belief.

Signature

Phyllis A. Edwards
Printed Name

Operations Secretary
Title

December 6, 2002
Date

SURVEYOR CERTIFICATION

I hereby certify that the well location shown
on this plat was plotted from field notes of
actual surveys made by me or under my
supervision and that the same is true and
correct to the best of my belief.

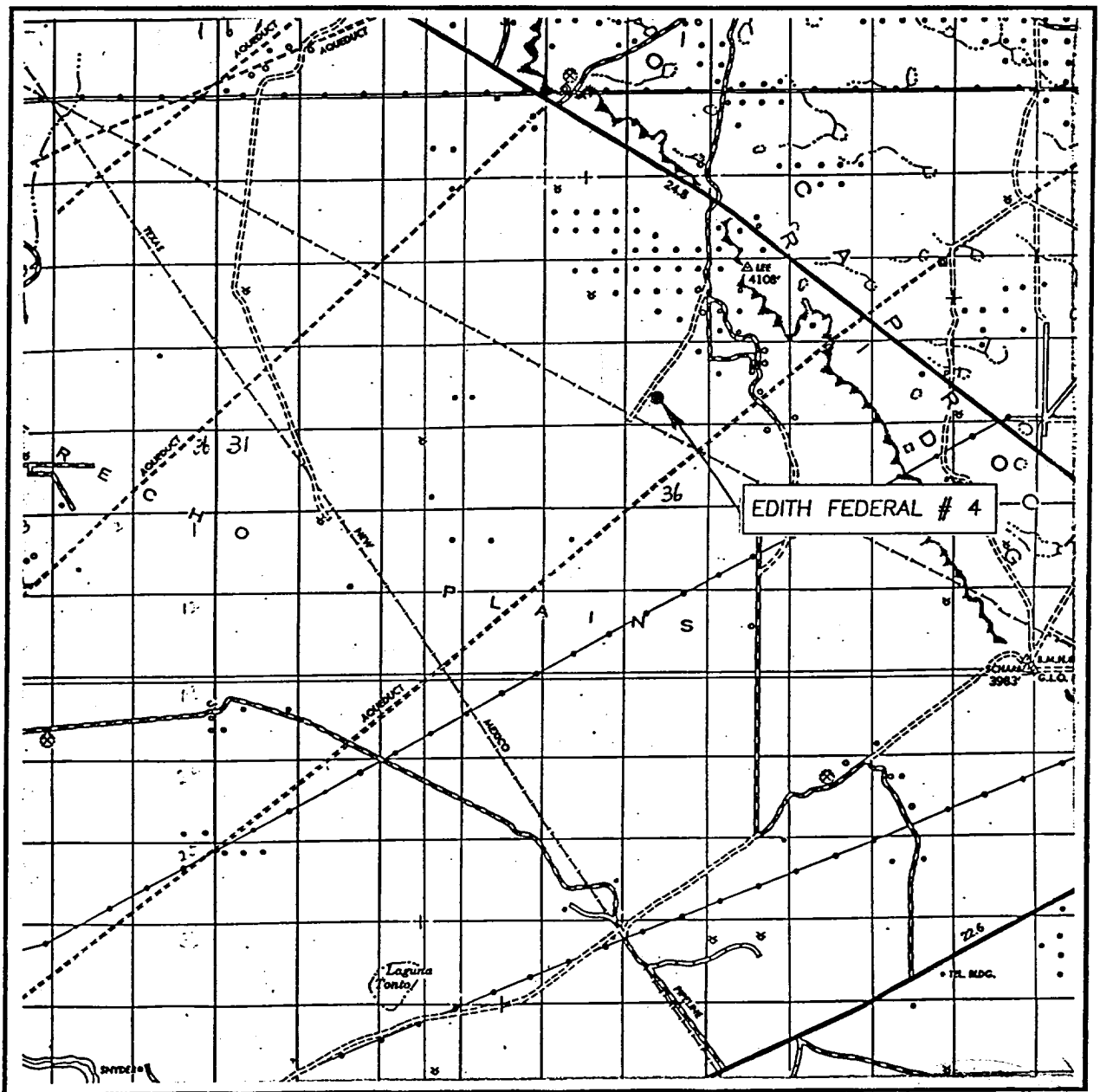
APRIL 29, 2001

Date Surveyed
Signature & Seal of
Professional Surveyor

Ronald J. Edson 5/02/01
01-11-0519

Certificate No. RONALD J. EDSON 3239
GARY EDSON 12641

VICINITY MAP



SCALE: 1" = 2 MILES

SEC. 25 TWP. 18-S RGE. 33-E
 SURVEY N.M.P.M.
 COUNTY LEA
 DESCRIPTION 1980' FSL & 1975' FWL
 ELEVATION 3853'
 OPERATOR CONCHO RESOURCES, INC.
 LEASE EDITH FEDERAL

JOHN WEST SURVEYING
 HOBBS, NEW MEXICO
 (505) 393-3117



CONTOUR INTERVAL: 10'

JOHN WEST SURVEYING
HOBBS, NEW MEXICO
(505) 393-3117