

Submit to Appropriate  
District Office  
State Lease - 6 copies  
Fee Lease - 5 copies

State of New Mexico  
Energy, Minerals and Natural Resources Department

Form C-101  
Revised 1-1-89

OIL CONSERVATION DIVISION

P.O. Box 2088  
Santa Fe, New Mexico 87504-2088

DISTRICT I  
P.O. Box 1980, Hobbs, NM 88240

DISTRICT II  
P.O. Drawer DD, Artesia, NM 88210

DISTRICT III  
1000 Rio Brazos Rd., Aztec, NM 87410

API NO. (assigned by OCD on New Wells)  
30-025-02091

5. Indicate Type of Lease  
STATE ☒ FEE ☐

6. State Oil & Gas Lease No.

APPLICATION FOR PERMIT TO DRILL, DEEPEN, OR PLUG BACK

1a. Type of Work:

DRILL ☐ RE-ENTER ☐ DEEPEN ☒ PLUG BACK ☐

b. Type of Well:

OIL WELL ☒ GAS WELL ☐ OTHER ☐

SINGLE ZONE ☐ MULTIPLE ZONE ☐

7. Lease Name or Unit Agreement Name

Bridges-State

2. Name of Operator

Mobil Producing TX. & N.M. Inc.\*

8. Well No.

22

3. Address of Operator \*Mobil Exploration & Producing U.S. Inc., as Agent for  
Mobil Producing TX. & N.M. Inc., P. O. Box 633, Midland, TX 79702

9. Pool name or Wildcat

Vacuum - Glorietta

4. Well Location

Unit Letter N : 660 Feet From The South Line and 660-1980 Feet From The East-West Line

Section 24 Township 17S Range 34E NMPM Lea County

10. Proposed Depth

TD 6300

11. Formation

Glorietta

12. Rotary or C.T.

Rotary

13. Elevations (Show whether DF, RT, GR, etc.)

GL 4016

14. Kind & Status Plug. Bond

On File

15. Drilling Contractor

Unknown

16. Approx. Date Work will start

11-06-92

17.

PROPOSED CASING AND CEMENT PROGRAM

SIZE OF HOLE	SIZE OF CASING	WEIGHT PER FOOT	SETTING DEPTH	SACKS OF CEMENT	EST. TOP
14-1/4	10-3/4	35.5	781	220 Sx	Circ.
8-3/4	7	24.	4278	220 Sx	TOT 2670
Original Casing Undisturbed					

6-1/4

4-1/2

10.5

TOL 3900

425 Sx C1 C

(Sxz TOL w/400 SX C1 C  
if necessary)

Well currently in San Andres Zone. Drill deeper request to Glorietta Formation.  
Procedure and proposed wellbore sketch attached.

IN ABOVE SPACE DESCRIBE PROPOSED PROGRAM: IF PROPOSAL IS TO DEEPEN OR PLUG BACK, GIVE DATA ON PRESENT PRODUCTIVE ZONE AND PROPOSED NEW PRODUCTIVE ZONE. GIVE BLOWOUT PREVENTER PROGRAM, IF ANY.

I hereby certify that the information above is true and complete to the best of my knowledge and belief.

SIGNATURE

Kaye Pollock

TITLE

ENGINEERING TECHNICIAN

DATE

10-30-92

(915)

TYPE OR PRINT NAME

Kaye Pollock

TELEPHONE NO.

688-2584

(This space for State Use)

Orig. Signed by  
Paul Kautz  
Geologist

APPROVED BY

TITLE

DATE

NTM 05 '92

CONDITIONS OF APPROVAL, IF ANY:

It successfully completed in Glorietta must go into Texas unit

Submit to Appropriate  
District Office  
State Lease - 4 copies  
Fee Lease - 3 copies

State of New Mexico  
Energy, Minerals and Natural Resources Department

Form C-102  
Revised 1-1-89

OIL CONSERVATION DIVISION

P.O. Box 2088  
Santa Fe, New Mexico 87504-2088

DISTRICT I

P.O. Box 1980, Hobbs, NM 88240

DISTRICT II

P.O. Drawer DD, Artesia, NM 88210

DISTRICT III

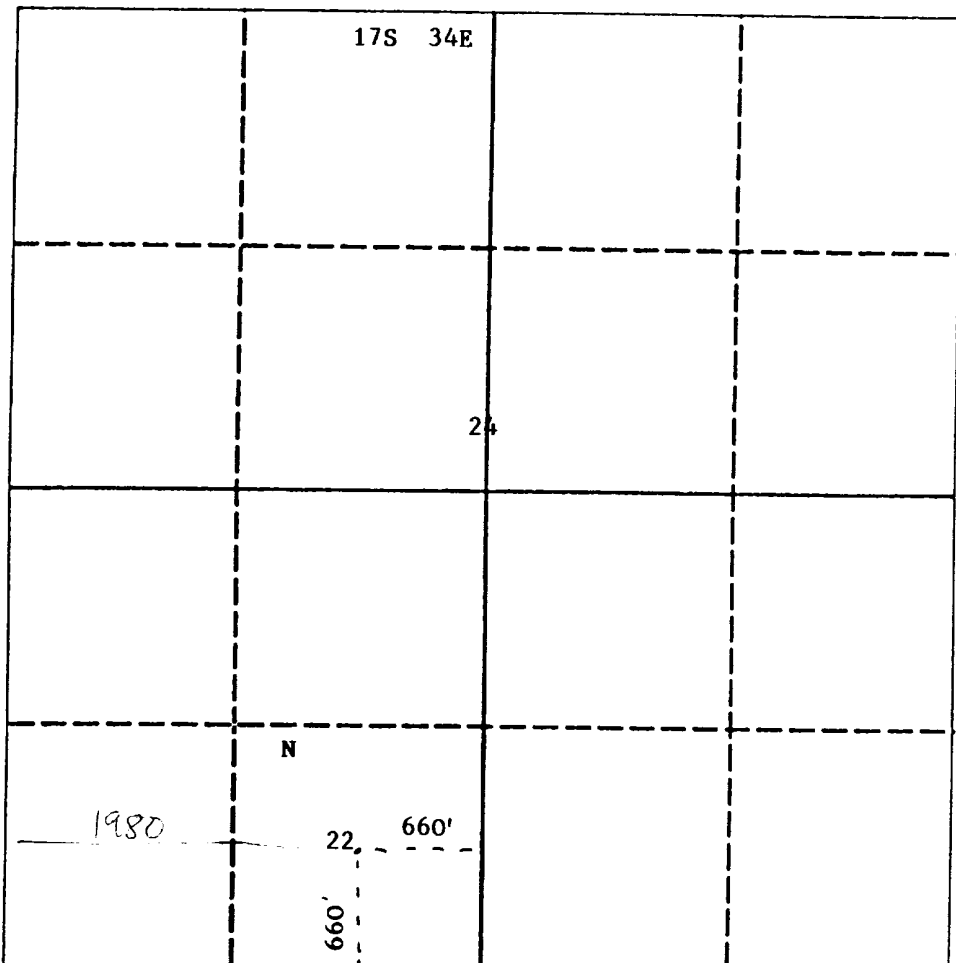
1000 Rio Brazos Rd., Aztec, NM 87410

WELL LOCATION AND ACREAGE DEDICATION PLAT

All Distances must be from the outer boundaries of the section

Operator MOBIL PRODUCING TX & NM INC.*, BOX 633 MIDLAND			Lease BRIDGES STATE		Well No. 22
Unit Letter N	Section 24	Township 17-S	Range 34E	County NMPM	LEA
Actual Footage Location of Well: 660 feet from the SOUTH line and <del>660</del> 1980 feet from the <del>EAST</del> WEST line					
Ground level Elev. 4016	Producing Formation GLORIETTA		Pool VACUUM <i>Florida</i>	Dedicated Acreage: <i>40</i> <del>5254.88</del> Acres	

- Outline the acreage dedicated to the subject well by colored pencil or hatchure marks on the plat below.
- If more than one lease is dedicated to the well, outline each and identify the ownership thereof (both as to working interest and royalty).
- If more than one lease of different ownership is dedicated to the well, have the interest of all owners been consolidated by communitization, unitization, force-pooling, etc.?  
☐ Yes ☐ No If answer is "yes" type of consolidation \_\_\_\_\_  
If answer is "no" list the owners and tract descriptions which have actually been consolidated. (Use reverse side of this form if necessary.) \_\_\_\_\_  
No allowable will be assigned to the well until all interests have been consolidated (by communitization, unitization, forced-pooling, or otherwise) or until a non-standard unit, eliminating such interest, has been approved by the Division.



OPERATOR CERTIFICATION

I hereby certify that the information contained herein is true and complete to the best of my knowledge and belief.

Signature

Printed Name

KAYE POLLOCK

Position

REGULATORY TECHNICIAN

Company

\*MOBIL E&P US AS AGENT-MPTM

Date

10-30-92

SURVEYOR CERTIFICATION

I hereby certify that the well location shown on this plat was plotted from field notes of actual surveys made by me or under my supervision, and that the same is true and correct to the best of my knowledge and belief.

Date Surveyed

Signature & Seal of  
Professional Surveyor

Certificate No.

0 330 660 990 1320 1650 1980 2310 2640 2000 1500 1000 500 0

## DRILL DEEPER AND SURVEY PROCEDURE

MIRU pulling unit with pumps, mud system, and power swivel. ND WH and NU BOP.

TIH with a 6-1/4" mill tooth journal-bearing bit, casing scraper f/ 7" 24# casing, (2) 4-3/4" (54 lb/ft) DC, and 2-7/8", 10.4#, grade E, AOH DP to 4,310'. POH w/ DP, DC, casing scraper, and bit.

PU a packer and RBP for 7" 24# casing. TIH to 4,300' & set RBP. PU to 200' and set packer. Pressure test RBP to 1500#. Shut-in backside and pressure test casing to 1500# for 30 minutes. If casing holds pressure, go to step #6.

Continue testing up the hole until the casing leak is isolated. Establish an injection rate and pressure for the leak. Contact E. L. Cash @ (915) 688-1404 for a squeeze procedure.

WOC 24 hrs. TIH with a 6-1/4" mill tooth bit w/ (15) 4-3/4" DC, and 2-7/8" DP. DO all cement plugs. Shut-in backside and test casing to 1500# for 30 minutes. Clean out hole to top of RBP. Wash all sand off RBP. POH w/ DP, DC, and bit. PU retrieving head and DP.

TIH to the RBP. Retrieve the RBP and POH w/ DP, packer, retrieving head, and RBP.

TIH with a 6-1/4" mill tooth journal-bearing bit, (15) 4-3/4" DC, and 2-7/8", 10.4#, grade E, AOH DP. Clean out open-hole from 4,278' to TD at 4,700'. Drill 10' of new formation.

POH with 6-1/4" bit, DC, and DP. TIH w/ 6-1/4" Smith F-4 insert bit w/ (15) 4-3/4" DC, and 2-7/8" DP.

Drill to TD @ 6,300'. Run TOTCO surveys every 500' while drilling new formation.

## CEMENTING PROCEDURE

Two pump trucks with recirculating type mixers will be required. One pump truck will be used as a standby only. Use a pressurized mud balance to check the cement density. Record the following job parameters versus time: pump rate, pump pressures, fluid density and total volumes pumped. Collect cement samples per procedure in appendix.

Reciprocate the liner 10' - 15' (2-3 minutes per stroke). Reciprocate while conditioning the hole, mixing cement and displacing cement. If surge and swab pressures are excessive, discontinue reciprocation. Circulate at least one hole volume prior to cementing.

Pressure test lines to 3000 psi for 5 minutes, prior to cementing.

Preced cement with 25 bbls of fresh water.

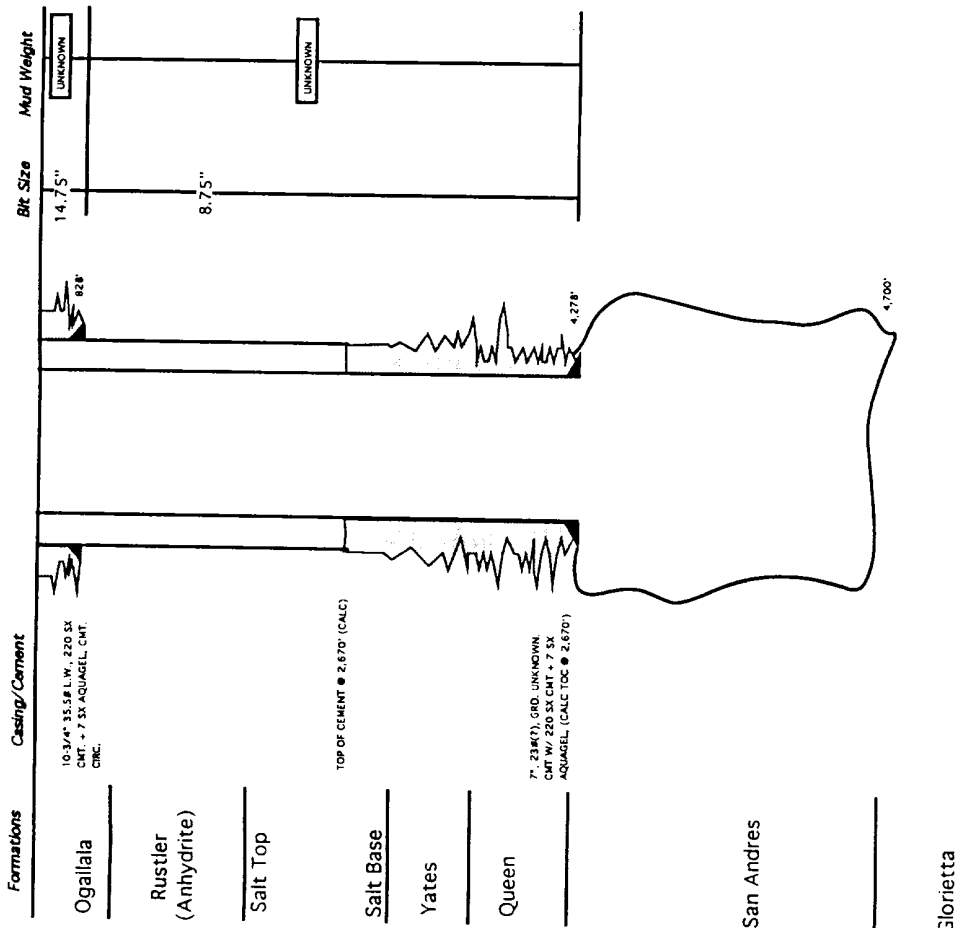
Pump cement downhole at 4 bpm.

Displace cement with 55 bbls of fresh water. DO NOT OVER-DISPLACE.

Release liner. POOH with running tool and lay down drillpipe.

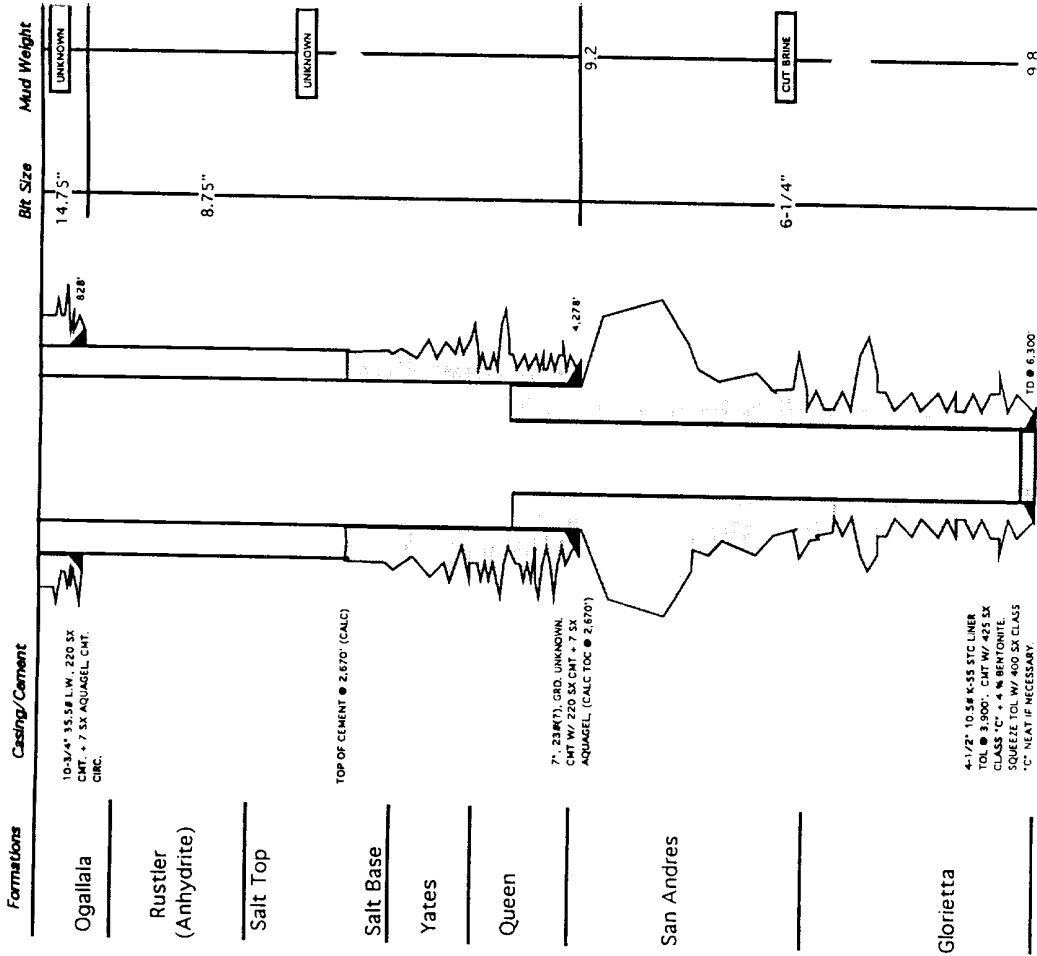
WOC 24 hrs. TIH w/ 7" packer. Test TOL to 500# for 30 minutes. If TOL holds, turn well over to production. If TOL leaks, contact E. L. Cash @ (915) 688-1404 for a liner top squeeze.

BRIDGES STATE #22  
LEA COUNTY, NEW MEXICO  
CURRENT WELLBORE SKETCH



4

BRIDGES STATE #22  
LEA COUNTY, NEW MEXICO  
PROPOSED WELLBORE SKETCH



4