

Submit to Appropriate
District Office
State Lease - 6 copies
Fee Lease - 5 copies

State of New Mexico
Energy, Minerals and Natural Resources Department

Form C-101
Revised 1-1-89

OIL CONSERVATION DIVISION

P.O. Box 2088
Santa Fe, New Mexico 87504-2088

DISTRICT I
P.O. Box 1980, Hobbs, NM 88240

DISTRICT II
P.O. Drawer DD, Artesia, NM 88210

DISTRICT III
1000 Rio Brazos Rd., Aztec, NM 87410

API NO. (assigned by OCD on New Wells)
30-025-02092

5. Indicate Type of Lease
STATE ☒ FEE ☐

6. State Oil & Gas Lease No.

APPLICATION FOR PERMIT TO DRILL, DEEPEN, OR PLUG BACK

1a. Type of Work:

DRILL ☐ RE-ENTER ☐ DEEPEN ☒ PLUG BACK ☐

b. Type of Well:

OIL WELL ☒ GAS WELL ☐ OTHER ☐
SINGLE ZONE ☒ MULTIPLE ZONE ☐

2. Name of Operator

Mobil Producing Tx. & N.M. Inc.

3. Address of Operator

P.O. Mobil Exploration & Producing U.S. Inc.
P.O. Box 633, Midland, Texas 79702

7. Lease Name or Unit Agreement Name
Bridges-State

8. Well No.

23

9. Pool name or Wildcat

Vacuum - *Glorietta*

4. Well Location

Unit Letter L : 1980 Feet From The South Line and 660 Feet From The West Line

Section 24

Township 17S

Range 34E

NMPM

Lea

County

10. Proposed Depth

TD-6300

11. Formation

Glorietta

12. Rotary or C.T.

Rotary

13. Elevations (Show whether DF, RT, GR, etc.)

4028 *KB GR 4016*

14. Kind & Status Plug. Bond

On File

15. Drilling Contractor

Unknown

16. Approx. Date Work will start

11-08-92

17.

PROPOSED CASING AND CEMENT PROGRAM

| SIZE OF HOLE | SIZE OF CASING | WEIGHT PER FOOT | SETTING DEPTH | SACKS OF CEMENT | EST. TOP |
|-----------------------------|----------------|-----------------|---------------|-----------------|----------|
| 14-1/4 | 10-3/4 | 35.5 | 835 | 220 sx | Circ. |
| 8-3/4 | 7 | 23 | 4330 | 220 sx | TOC 2680 |
| Original Casing Undisturbed | | | | | |

6-1/4

4-1/2 Liner

10.5

TOL 3900

425 Sx Cl C

(Sqz TOL w/400 Sx Cl C, if necessary)

Well currently in San Andres field. Drill deeper request to Glorietta Formation.
Procedure and proposed wellbore sketch attached.

IN ABOVE SPACE DESCRIBE PROPOSED PROGRAM: IF PROPOSAL IS TO DEEPEN OR PLUG BACK, GIVE DATA ON PRESENT PRODUCTIVE ZONE AND PROPOSED NEW PRODUCTIVE ZONE. GIVE BLOWOUT PREVENTER PROGRAM, IF ANY.

I hereby certify that the information above is true and complete to the best of my knowledge and belief

SIGNATURE

Kaye Pollock

TITLE

Engineering Technician

TE

10-30-92

TYPE OR PRINT NAME

Kaye Pollock

Mobil Producing Texas & New Mexico Inc.
acting by and through its agent
Mobil Exploration & Producing U.S. Inc.

TELEPHONE NO. (915) 688-2584

(This space for State Use)

Orig. Signed by
Paul Kautz
Geologist

APPROVED BY

TITLE

DATE

NOV 0 1992

CONDITIONS OF APPROVAL, IF ANY:

If successfully completed in Glorietta must go into Texas Unit

OIL CONSERVATION DIVISION

P.O. Box 2088

Santa Fe, New Mexico 87504-2088

DISTRICT I

P.O. Box 1980, Hobbs, NM 88240

DISTRICT II

P.O. Drawer DD, Artesia, NM 88210

DISTRICT III

1000 Rio Brazos Rd., Aztec, NM 87410

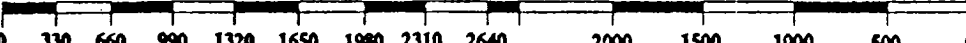
WELL LOCATION AND ACREAGE DEDICATION PLAT

All Distances must be from the outer boundaries of the section

| | | | | | |
|---|----------------------------------|-----------------|------------------------|--|----------------|
| Operator MOBIL PRODUCING TX & NM INC* BOX 633 MIDLAND TX | | | Lease BRIDGES STATE | | Well No. 23 |
| Unit Letter L | Section 24 | Township 17S | Range 34E | County NMPM | LEA |
| Actual Footage Location of Well: 1980 feet from the SOUTH line and 660 feet from the WEST line | | | | | |
| Ground level Elev. 4028 | Producing Formation GLORIETTA | | Pool VACUUM | Dedicated Acreage: 40 530.13 Acres | |

1. Outline the acreage dedicated to the subject well by colored pencil or hatchure marks on the plat below.
2. If more than one lease is dedicated to the well, outline each and identify the ownership thereof (both as to working interest and royalty).
3. If more than one lease of different ownership is dedicated to the well, have the interest of all owners been consolidated by communitization, unitization, force-pooling, etc.?
- ☐ Yes ☐ No If answer is "yes" type of consolidation _____
- If answer is "no" list the owners and tract descriptions which have actually been consolidated. (Use reverse side of this form if necessary.) _____
- No allowable will be assigned to the well until all interests have been consolidated (by communitization, unitization, forced-pooling, or otherwise) or until a non-standard unit, eliminating such interest, has been approved by the Division.

| | | |
|--|-----|--|
| 17S | 34E | |
| | | |
| L 660' 23 ○ 1980' | 24 | |



OPERATOR CERTIFICATION

I hereby certify that the information contained herein is true and complete to the best of my knowledge and belief.

Signature: *Kaye Pollock*

Printed Name: **KAYE POLLOCK**

Position: **REGULATORY TECHNICIAN**

Company: **MOBIL E&P US AS AGENT-MPTM**

Date: **10-30-92**

SURVEYOR CERTIFICATION

I hereby certify that the well location shown on this plat was plotted from field notes of actual surveys made by me or under my supervision, and that the same is true and correct to the best of my knowledge and belief.

Date Surveyed: _____

Signature & Seal of Professional Surveyor: _____

Certificate No.: _____

DRILL DEEPER AND SURVEY PROCEDURE

MIRU pulling unit with pumps, mud system, and power swivel. ND WH and NU BOP.

TIH with a 6-1/4" mill tooth journal-bearing bit on (15) 4-3/4" (54 lb/ft) DC, and 2-7/8", 10.4#, grade E, AOH DP to 4,150'. Shut-in backside and pressure test 7" casing to 1500# for 30 minutes. If casing holds pressure, go to step #5.

POH with 2-7/8" DP, 4-3/4" DC and 6-1/4" bit. PU a packer for 7" 24# casing. TIH to 4,150' & set packer. Test CIBP to 1500#. If CIBP holds, PUH 500' and test casing to 1500# for 30 minutes. Continue testing up the hole until the casing leak is isolated. Establish an injection rate and pressure for the leak. Contact E. L. Cash @ (915) 688-1404 for a squeeze procedure.

WOC 24 hrs. TIH with a 6-1/4" mill tooth bit w/ (15) 4-3/4" DC, and 2-7/8" DP. DO all cement plugs. Shut-in backside and test casing to 1500# for 30 minutes.

Drill out CIBP at 4,230' w/ 35' cement cap (PBTD @ 4,195') and a CIBP at 4,245' (This CIBP would not set and was left in the hole. The setting depth is not definite.) Clean out hole to TD @ 4,700'. Drill 10' of new formation.

POH with 6-1/4" bit, DC, and DP. TIH w/ 6-1/4" Smith F-4 insert bit w/ (15) 4-3/4" DC, and 2-7/8" DP.

Drill to TD @ 6,300'. Run TOTCO surveys every 500' while drilling new formation.

CEMENTING PROCEDURE

Two pump trucks with recirculating type mixers will be required. One pump truck will be used as a standby only. Use a pressurized mud balance to check the cement density. Record the following job parameters versus time: pump rate, pump pressures, fluid density and total volumes pumped. Collect cement samples per procedure in appendix.

Reciprocate the liner 10' - 15' (2-3 minutes per stroke). Reciprocate while conditioning the hole, mixing cement and displacing cement. If surge and swab pressures are excessive, discontinue reciprocation. Circulate at least one hole volume prior to cementing.

Pressure test lines to 3000 psi for 5 minutes, prior to cementing.

Precede cement with 25 bbls of fresh water.

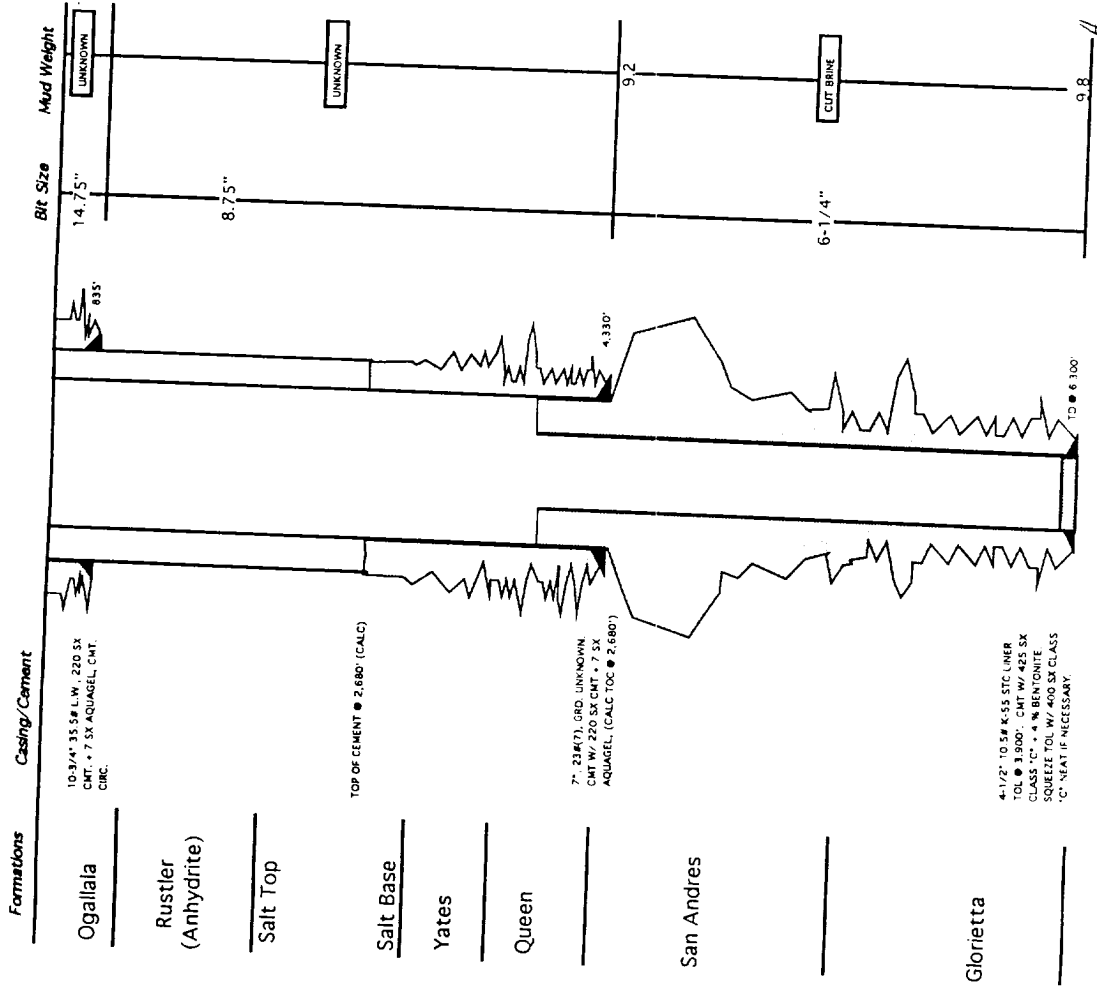
Pump cement downhole at 4 bpm.

Displace cement with 55 bbls of fresh water. **DO NOT OVER-DISPLACE.**

Release liner. POOH with running tool and lay down drillpipe.

WOC 24 hrs. TIH w/ 7" packer. Test TOL to 500# for 30 minutes. If TOL holds, turn well over to production. If TOL leaks, contact E. L. Cash @ (915) 688-1404 for a liner top squeeze procedure.

BRIDGES STATE #23
LEA COUNTY, NEW MEXICO
WELLBORE SKETCH



BRIDGES STATE #23
LEA COUNTY, NEW MEXICO
CURRENT WELLBORE SKETCH

