

**LONG STRING EQUIPMENT**

- 28' Pup Joints
- 128 Jts. 2 3/8" OD BUTTRESS
- 29 Jts. 1 1/4" I.J. 10 rd.
- BAKER PARALLEL ANCHOR
- 50 Jts. 1 1/4" I.J. 10 rd.
- BAKER LATCH TYPE SEAL ASSY.
- BAKER TYPE "E" FLOW TUBE (BOTTOM AT 6405')

**SHORT STRING EQUIPMENT**

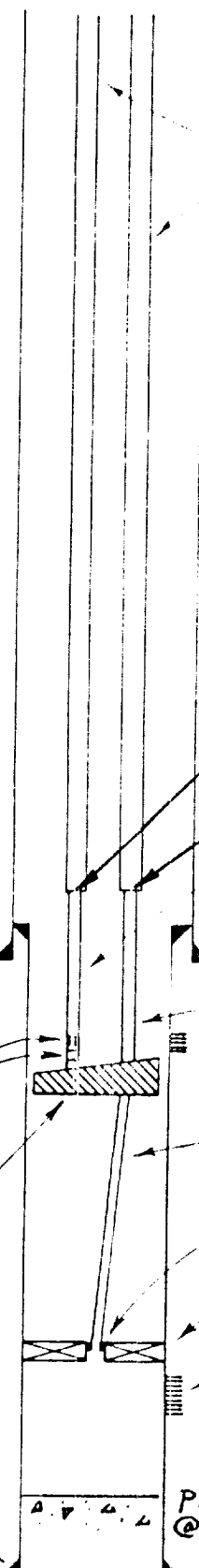
- 23 1/2' Pup Joints
- 128 Jts. 2 1/16" OD BUTTRESS
- 27 Jts. 2 1/16" I.J.
- Seating Nipple 1 3/8" x 1'
- 1-2' PERFORATED NIPPLE
- 1 JOINT 2 1/16" I.J.
- BAKER 1 1/4" STINGER (LATCH TYPE)

**NOTE:**

LONG STRING SET WITH 5000# TENSION.  
SHORT STRING SET WITH 4000# TENSION.

Seating nipple 1 3/8" ID. 4800'  
Perforated nipple 4801'-03  
Baker Parallel Anchor with short string hold down. 4840'

5" 15 lbs./ft., J-55 at TD 6900'



2 3/8" OD Buttress J-55

**NOTE:**

10 3/4" csg. @ 815' w/250 sx., TD 4241' w/210 sx., Cement top unknown. 5" liner as shown. Cemented w/875 sx. Trinity Lite-Wale + 50 sx. neat Cement circ.

3959'

3951'

2 1/16" I.J. J-55

Liner top at 4067'

7" 24 lbs./ft at 4241'

1 1/4" I.J. J-55

San Andres perforations 4743'-4811'

1 1/4" I.J. J-55

Latch type seal assembly

Permanent packer 6400' BAKER "D"

Paddock perforations 6419'-6705'

P8TD @ 6833'

DIAGRAMATIC SKETCH		State Bridges No. <u>36</u> -DD	
Lea County,		New Mexico	
SOCONY MOBIL OIL COMPANY, INC.			
Hobbs Producing District			
DRAWN CTA	CHECKED JDH	SCALE None	DWG. NO. A-163-D&P
		DATE 11-19-62	