

NO. OF COPIES RECEIVED	
DISTRIBUTION	
SANTA FE	
FILE	
U.S.G.S.	
LAND OFFICE	
OPERATOR	

5A. Indicate Type of Lease STATE <input checked="" type="checkbox"/> FEDERAL <input type="checkbox"/>
5. State Oil & Gas Lease No. B-3196
7. Unit Agreement Name
8. Farm or Lease Name State H-35
9. Well No. 4
10. Field and Pool, or Wildcat Undersig. Yates
12. County Lea

APPLICATION FOR PERMIT TO DRILL, DEEPEN, OR PLUG BACK

1a. Type of Work
b. Type of Well
OIL WELL ☒ GAS WELL ☐ OTHER ☐
DRILL ☐ DEEPEN ☐ PLUG BACK ☒
SINGLE ZONE ☐ MULTIPLE ZONE ☐

2. Name of Operator
Conoco Inc.

3. Address of Operator
PO Box 460, Hobbs, NM 88240

4. Location of Well
UNIT LETTER F LOCATED 1980 FEET FROM THE North LINE
AND 1980 FEET FROM THE West LINE OF SEC. 35 TWP. 17S RGE. 34E NMPM

19. Proposed Depth
4070 PBD

19A. Formation
Yates

20. Rotary or C.T.
-

21. Elevations (Show whether DE, RT, etc.)
4017'

21A. Kind & Status Plug. Bond
Blanket

21B. Drilling Contractor

22. Approx. Date Work will start
October 1, 1988

PROPOSED CASING AND CEMENT PROGRAM

SIZE OF HOLE	SIZE OF CASING	WEIGHT PER FOOT	SETTING DEPTH	SACKS OF CEMENT	EST. TOP
No change	No change	No change	No change	No change	No Change

MIRW. POOH w/2 7/8" Hbg. Set CIBP @ 4110'. Pressure test CIBP to 1000 psi. Dump 40' (5 1/2 ft³) Class "C" on CIBP. Perforate 2994' - 3148' (88 shots). Acidize across perfs w/4 bbls of 15% HCl-NE-FE. Displace w/17 bbls TFW. Breakdown perfs w/150 bbls 15% HCl-NE-FE. Displace w/20 bbls TFW. Place well production.

IN ABOVE SPACE DESCRIBE PROPOSED PROGRAM: IF PROPOSAL IS TO DEEPEN OR PLUG BACK, GIVE DATA ON PRESENT PRODUCTIVE ZONE AND PROPOSED NEW PRODUCTIVE ZONE. GIVE BLOWOUT PREVENTER PROGRAM, IF ANY.

I hereby certify that the information above is true and complete to the best of my knowledge and belief.

Signed D.E. Finney Title Adm. Supervisor Date 9/14/88

(This space for State Use)
ORIGINAL SIGNED BY JERRY SEXTON
DISTRICT I SUPERVISOR

APPROVED BY _____ TITLE _____ DATE _____

CONDITIONS OF APPROVAL, IF ANY:

Permit Expires 6 Months From Approval
Date Unless Drilling Underway.

State H-35 #4

Vacuum Gravity - San Andres

PROPOSED WELLBORE CONDITIONS

Location: 1980' FTL & 1980' FTL
Sec. 35, T-17S, R-34E

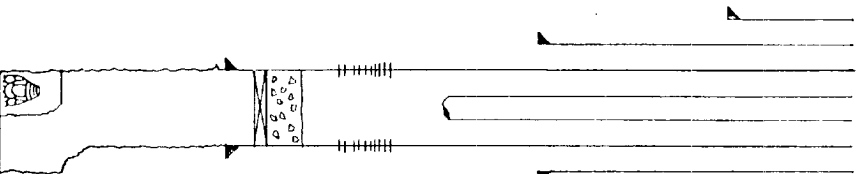
Drilled: December 22, 1938
Completed: January 30, 1939

Elevation: 4017'

Yates Perforations (1 JSPF)

2994'-3000'
3012'-3018'
3022'-3035'
3038'-3060'
3062'-3072'
3112'-3126'
3138'-3148'

TOC @ 4070'
CIBP set @ 4110'



10-3/4", 32.75#/ft.
SMLS (12.25" hole)
casing set @ 300'
w/225 sx

7-5/8", 26.4#/ft.
SMLS (9-7/8" hole)
casing set @ 1554'
w/425 sx

5-1/2", 17#/ft.
SMLS (6-3/4" hole)
casing set @ 4151'
w/425 sx

4-3/4" open hole from
4151'-4735'

T.D. 4735'

State H-35 #4

Vacuum Gravity - San Andres

EXISTING WELLBORE CONDITIONS

Location: 1980' FTL & 1980' FTL
Sec. 35, T-17S, R-34E

Drilled: December 22, 1938
Completed: January 30, 1939

Elevation: 4017'

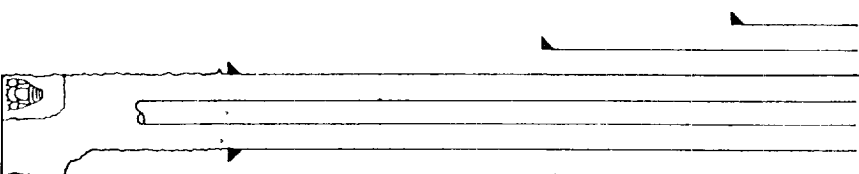
7-5/8", 26.4#/ft.
SMLS (9-7/8" hole)
casing set @ 1554'
w/425 sx

10-3/4", 32.75#/ft.
SMLS (12.25" hole)
casing set @ 300'
w/225 sx

5-1/2", 17#/ft.
SMLS (6-3/4" hole)
casing set @ 4151'
w/425 sx

4-3/4" open hole from
4151'-4735'

T.D. 4735'



NEW MEXICO OIL CONSERVATION COMMISSION
WELL LOCATION AND ACREAGE DEDICATION PLAT

Form C-102
Supersedes C-128
Effective 1-1-65

All distances must be from the outer boundaries of the Section.

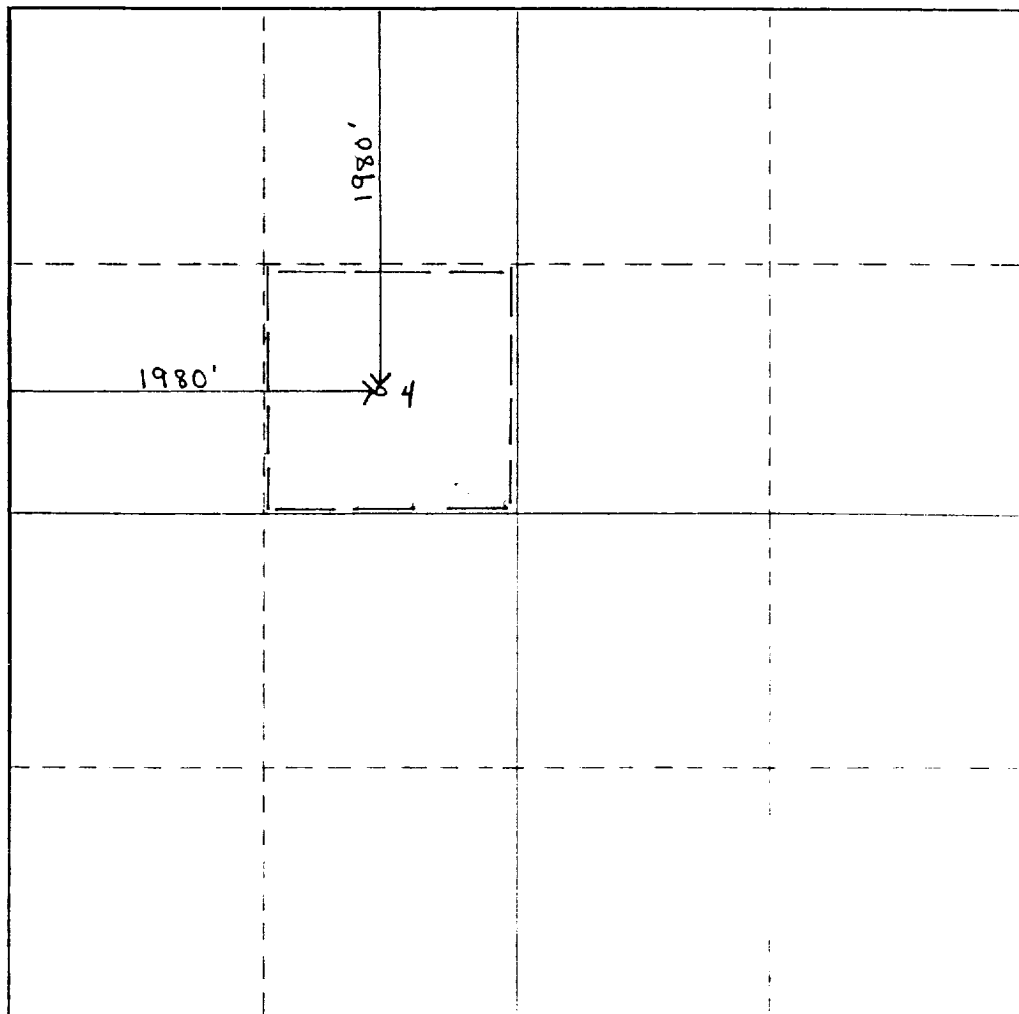
Operator Conoco Inc.		Lease State H-35		Well No. 4
Unit Letter F	Section 35	Township 17S	Range 34E	County Lea
Actual Footage Location of Well: 1980 feet from the North line and 1980 feet from the West line				
Ground Level Elev. 4017'	Producing Formation Yates	Pool Wildcat	Dedicated Acreage: 40 Acres	

1. Outline the acreage dedicated to the subject well by colored pencil or hatchure marks on the plat below.
2. If more than one lease is dedicated to the well, outline each and identify the ownership thereof (both as to working interest and royalty).
3. If more than one lease of different ownership is dedicated to the well, have the interests of all owners been consolidated by communitization, unitization, force-pooling, etc?

☐ Yes ☐ No If answer is "yes," type of consolidation _____

If answer is "no," list the owners and tract descriptions which have actually been consolidated. (Use reverse side of this form if necessary.) _____

No allowable will be assigned to the well until all interests have been consolidated (by communitization, unitization, forced-pooling, or otherwise) or until a non-standard unit, eliminating such interests, has been approved by the Commission.



CERTIFICATION

I hereby certify that the information contained herein is true and complete to the best of my knowledge and belief.

Name **D.F. Finney**
Position **Adm. Supervisor**
Company **Conoco Inc.**

Date **9/16/88**

I hereby certify that the well location shown on this plat was plotted from field notes of actual surveys made by me or under my supervision, and that the same is true and correct to the best of my knowledge and belief.

Signature _____

Registered Professional Engineer
and/or Licensed Surveyor

Plat No. _____