

Submit 3 Copies To Appropriate District Office
District I
1625 N. French Dr., Hobbs, NM 87240
District II
811 South First, Artesia, NM 87210
District III
1000 Rio Brazos Rd., Aztec, NM 87410
District IV
2040 South Pacheco, Santa Fe, NM 87505

State of New Mexico
Energy, Minerals and Natural Resources

OIL CONSERVATION DIVISION

2040 South Pacheco
Santa Fe, NM 87505

Form C-103
Revised March 25, 1999

WELL API NO.

30-025-02224

5. Indicate Type of Lease

STATE ☒ FEE ☐

6. State Oil & Gas Lease No.

B-2317

7. Lease Name or Unit Agreement Name:

STATE 35 UNIT

8. Well No.

009

9. Pool name or Wildcat

VACUUM GRAYBURG/SAN ANDRES

SUNDRY NOTICES AND REPORTS ON WELLS

(DO NOT USE THIS FORM FOR PROPOSALS TO DRILL OR TO DEEPEN OR PLUG BACK TO A DIFFERENT RESERVOIR. USE "APPLICATION FOR PERMIT" (FORM C-101) FOR SUCH PROPOSALS.)

1. Type of Well:

Oil Well ☒ Gas Well ☐ Other

2. Name of Operator

Phillips Petroleum Company

3. Address of Operator

4001 Penbrook Street Odessa, TX 79762

4. Well Location

Unit Letter E : 1980 feet from the NORTH line and 660 feet from the WEST line

Section 35 Township 17S Range 34E NMPM County LEA

10. Elevation (Show whether DR, RKB, RT, GK, etc.)

4016' GR

11. Check Appropriate Box to Indicate Nature of Notice, Report, or Other Data

NOTICE OF INTENTION TO:

PERFORM REMEDIAL WORK ☐ PLUG AND ABANDON ☒

TEMPORARILY ABANDON ☐ CHANGE PLANS ☐

PULL OR ALTER CASING ☐ MULTIPLE COMPLETION ☐

OTHER: ☐

SUBSEQUENT REPORT OF:

REMEDIAL WORK ☐ ALTERING CASING ☐

COMMENCE DRILLING OPNS. ☐ PLUG AND ABANDONMENT ☐

CASING TEST AND CEMENT JOB ☐

OTHER: ☐

12. Describe Proposed or Completed Operations (Clearly state all pertinent details, and give pertinent dates, including estimated date of starting any proposed work). SEE RULE 1103. For Multiple Completions: Attach wellbore diagram of proposed completion or recompletion.

01. MIRU Plug and Abandon Unit. NU PPCO Class 1 BOPE.

02. Gih w/ 2-3/8" ws and tag cibp @ 4030'. Mix and circulate wellbore with 9.5 Mud Laden Fluid (MLF).

03. Pump plug No. 1 - 70 sxs 3550'-4030'. Covers the San Andres, Grayburg & Queen.

04. Pump plug No. 2 - 25 sxs 3000'-2885'. Covers the TOC of production casing @ 2935'.

05. Ru wireline truck. Gih and perforate 7" casing, 4 spf at 2870', 4 holes.

06. Gih w/ ws and AD-1 rental packer to 2600' and set packer.

07. Pump plug #3 - Squeeze 65 sxs cement 2870'-2720'. Displace 50' below packer. WOC & TAG. Covers the Yates.

08. Release packer & pooh. RU wireline truck and perforate 7" casing, 4 SPF at 1660', 4 holes.

09. Gih w/ ws and AD-1 rental packer to 1350' and set packer.

10. Pump plug #4 - squeeze 65 sxs cement 1660'-1492'. Displace 50' below packer. WOC & TAG. Covers the salt top and surface casing shoe.

CONTINUED ON BACK

I hereby certify that the information above is true and complete to the best of my knowledge and belief.

SIGNATURE

TITLE SUPERVISOR, REG./PRORATION

DATE 8-10-01

Type or print name L. M. Sanders

Telephone No. (915) 368-1488

(This space for State use)

APPROVED BY

TITLE

DATE

Conditions of approval, if any:

THE COMMISSION MUST BE NOTIFIED 24 HOURS PRIOR TO THE BEGINNING OF PLUGGING OPERATIONS UNDER RULE 1103

11. Release packer, pooh to 400'. Ld workstring and packer. TIH to 400'.
12. Pump plug No. 5 – Pump surface plug 75 sxs 400'-0. Isolates fresh water.
13. Cut off casing and wellheads 3' below GL and cap well. Install Dry Hole marker.
Perform reclamation work.

PLUG AND ABANDON WELL PROCEDURE
STATE 35 UNIT # 9

NOTE: Cement used is Class "C", density of 14.8 ppg, yield of 1.32 cubic feet per sack.

1. Notify NMOCD at (505) 393-6161 24 hrs. prior to initiating plugging operations.
2. MIRU Plug & Abandon Package. NU PPCo. Class 1 BOPE.
3. GIH w/ 2-3/8" WS and tag CIBP @ 4030'. Mix and circulate wellbore with 9.5 Mud Laden Fluid (MLF).
4. Pump Plug No. 1. 70 sx, 3550 – 4030'. Covers the San Andres, Grayburg, & Queen.
5. LD Workstring to 3000'.
6. Pump Plug No. 2. 25 sx, 3000 – 2885'. Covers the TOCof Production casing @ 2935'.
7. LD Workstring to 2600' & POOH.
8. RU Wireline truck, GIH and Perforate 7" csg, 4 SPF at 2870', 4 holes. POOH. RD Wireline..
9. GIH w/ WS and AD-1 rental packer to 2600' & Set Packer. Attempt to establish pump in rate via 5-1/2" x 8-5/8 annulus. Maximum pressure of 1200# psi @ 2 bpm. (If unable to obtain rate notify Drlg Supt before proceeding.)
10. Pump Plug #3. Squeeze 65 sx cement 2870 - 2720'. Displace 50' below packer. WOC & TAG. Covers the Yates.
11. Release packer & POOH. RU WL truck & perforate 7" csg, 4 SPF at 1660', 4 holes. POOH. RD Wireline..
12. GIH w/ WS and AD-1 rental packer to 1350' & Set Packer. Attempt to establish pump in rate via 5-1/2" x 8-5/8 annulus. Maximum pressure of 1200# psi @ 2 bpm. (If unable to obtain rate notify Drlg Supt before proceeding.)
13. Pump Plug #4. Squeeze 65 sx cement 1660 - 1492'. Displace 50' below packer. WOC & TAG. Covers the Salt Top and Surface Casing Shoe.
14. Release Packer, POOH to 400', LD Workstring & packer. TIH to 400'
15. Pump Plug No. 5. Pump Surface plug 75 Sxs. 400 – 0'. Isolates fresh water.
16. Cut off casing and wellheads 3' below GL and cap well. Install Dry Hole marker. Perform reclamation work.

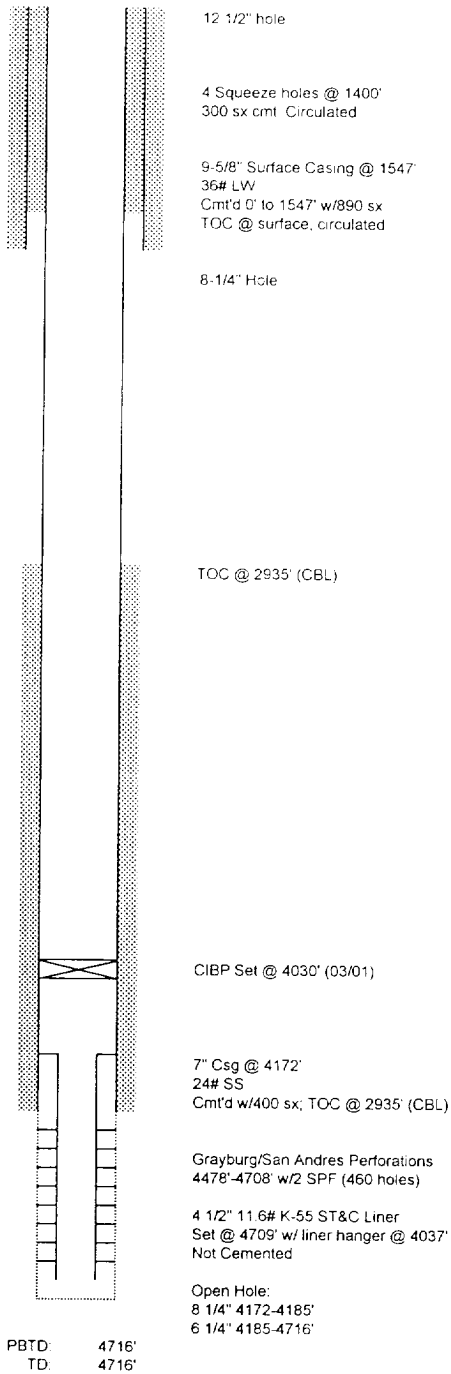
WELLBORE SKETCH
PHILLIPS PETROLEUM COMPANY - PERMIAN PROFIT CENTER

Date August 7, 2001

RKB @ 4026.8'
 DF @
 GL @ 4016.3'

Well Category	<u>One</u>		
Subarea	<u>BUCKEYE</u>		
Lease & Well No	<u>STATE 35 UNIT</u>	<u>#9</u>	
Legal Description	<u>1980' FNL & 660' FWL, Sec. 35, T17S, R34E</u>		
County	<u>Lea</u>	State	<u>New Mexico</u>
Field	<u>Vacuum GB/SA</u>		
Date Spudded	<u>11/1938</u>	IPF	<u>12/30/38 24 BO, 10 MCFG IN 6 HRS</u>
API Number	<u>30-025-02224</u>		

PPCO W 100%



Formation Tops:	Top Salt	1710'
	Yates	2820'
	Queen	3747'
	Grayburg	4100'
	San Andres	4496'

WELL BORE SKETCH

August 7 2001

4026 8'

DF @

GL @

Well Category One

Subarea : BUCKEYE

Lease & Well No	STATE 35 UNIT	#9
-----------------	---------------	----

Legal Description : 1980' FNL & 660' F&M, Sec. 3

County Lea

Field : Vacuum GB/SA

Date Spudded : 11/1938

API Number : 30-025-02224

IPI 12/30/38 24 BO, 10 MCFG IN 6 HRS

PPCO W: 100%

Plug #5, 75 sx, interval 400 - 0
(Surface Plug)

4 Squeeze holes @ 1400'
300 sx cmt. Circulated

9-5/8" Surface Casing @ 1547
36# LW

Cml'd 0' to 1547' w/890 sx

TOC @ surface, circulated

Plug #4, 65 sx, interval 1660 - 1492
(covers Top Salt & Csg shoe)

Perforate 4 SPF @ 1660', 4 holes
Squeeze 25 sx cmt. to 1497'

8-1/4" Hole

Plug #3, 65 sx, interval 2720-2870', TOC @ 2720' (calculated)
(covers Yates)

Plug #2, 25 sx, interval 3000-2885', TOC @ 2720' (calculated)
TOC @ 2935' (CBL)

Plug #1,70 sx, interval 4030 - 3550
(covers San Andres, Grayburg, & Queen)
CIBP Set @ 4030' (03/01)

7" Csg @ 4172'
24# SS
Cmt'd w/400 sx; TOC @ 2935' (CBL)

Grayburg/San Andres Perforations
4478'-4708' w/2 SPF (460 holes)

4 1/2" 11.6# K-55 ST&C Liner
Set @ 4709' w/ liner hanger @ 4037'
Not Cemented

Open Hole:
8 1/4" 4172-4185'
6 1/4" 4185-4716'

Formation Tops	Top Salt	1710
	Yates	2820
	Queen	3747
	Grayburg	4100
	San Andres	4496

4716"

TD: 4716'