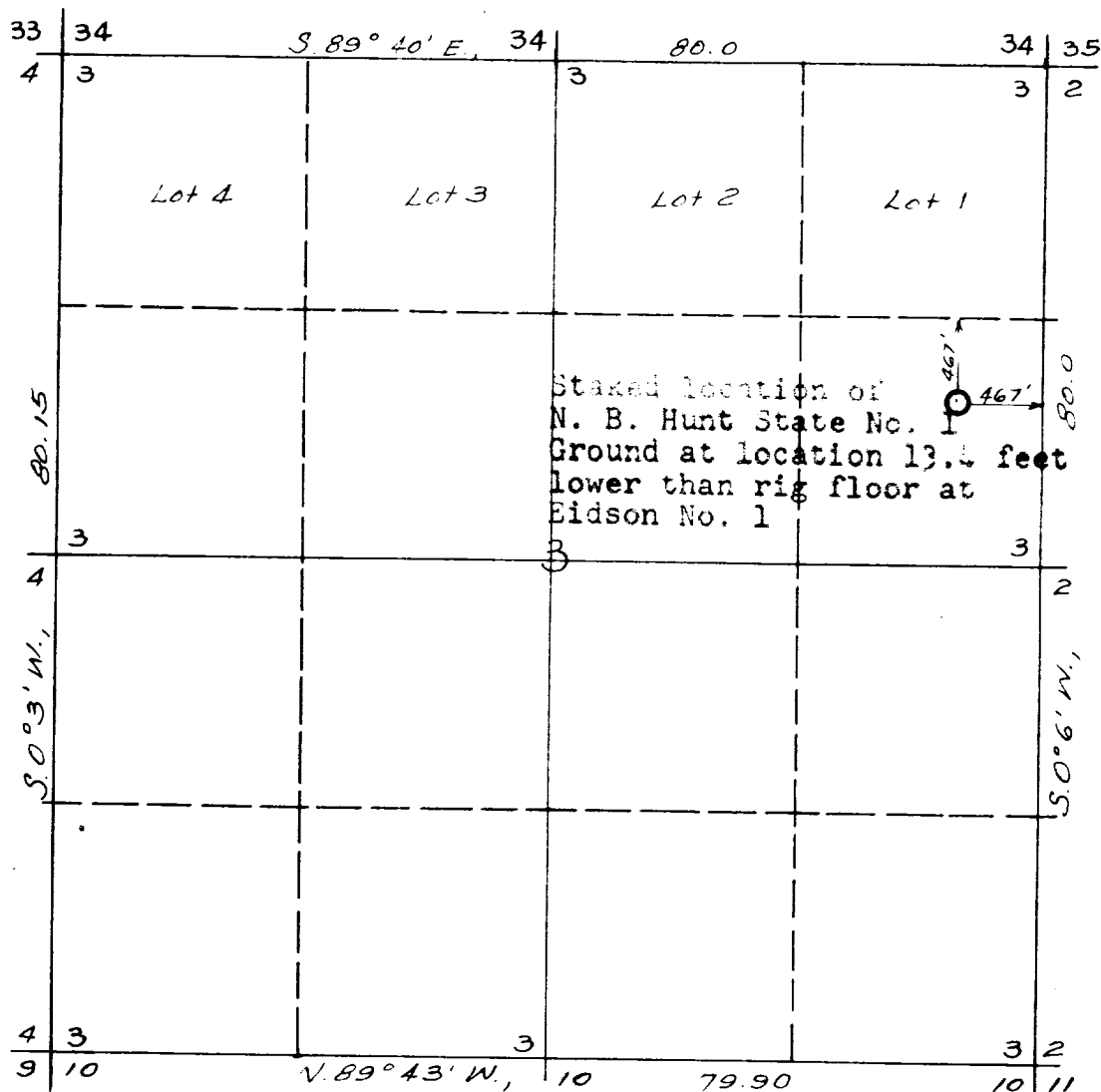


SEP 14 1953

N. B. HUNT STATE OF NEW MEXICO No. 1  
 SE 1/4 of Section 3,  
 Twp. 17 S., Rge. 35 E.,  
 N. M. P. M.  
 Lea County, New Mexico



STATE OF NEW MEXICO:

COUNTY OF LEA : ss

I, James T. Bridgforth hereby certify that I am the Registered Professional Engineer and Land Surveyor who prepared the above map from field notes of actual surveys made under my direction and the same are true and correct to the best of my knowledge and belief.

*James T. Bridgforth*  
 Registered Professional Engineer and  
 Land Surveyor - License No. 726

LEA ENGINEERING CO.  
 Lovington, New Mex.  
 September 4, 1953



11