

NEW MEXICO OIL CONSERVATION COMMISSION

Santa Fe, New Mexico

MISCELLANEOUS NOTICES

Submit this notice in triplicate to the Oil Commission or its proper agent before the work specified is to begin. A copy will be returned to the sender on which will be given the approval, with any modifications considered advisable, or the rejection by the Commissioner or agent, of the plan submitted. The plan as approved should be followed, and work should not begin until approval is obtained. See additional instructions in the Rules and Regulations of the Commission.

Indicate nature of notice by checking below:

NOTICE OF INTENTION TO TEST CASING SHUT-OFF		NOTICE OF INTENTION TO SHUT-OFF CHEMICALLY TREAT WELL	XXXX
NOTICE OF INTENTION TO CHANGE PLANS		NOTICE OF INTENTION TO PULL OR OTHERWISE ALTER CASING	
NOTICE OF INTENTION TO REPAIR WELL			
NOTICE OF INTENTION TO DEEPEN WELL		NOTICE OF INTENTION TO PLUG WELL	

Odessa, Texas

February 22, 1939

Place

Date

OIL CONSERVATION COMMISSION,

Santa Fe, New Mexico.

Gentlemen:

DUPLICATE

Following is a notice of intention to do certain work as described below at the

Phillips Petroleum Company

Santa Fe B-1501

Well No. 25 in NW/4 SE/4

Company or Operator

Lease

of Sec. 30, T. 17-S, R. 35-E, N. M. P. M., Vacuum Field,

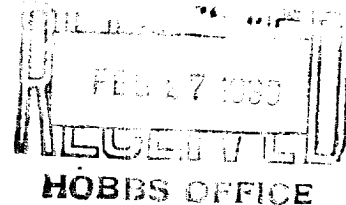
Ira

County.

FULL DETAILS OF PROPOSED PLAN OF WORK

FOLLOW INSTRUCTIONS IN THE RULES AND REGULATIONS OF THE COMMISSION

T. D. 4667 Lims. It is proposed to acid treat the pay formation from 4124' to total depth with 1500 gal. Dowell XNWF6.



FEB 27 1939

Approved _____, 19____
except as follows:

Phillips Petroleum Company

Company or Operator

By

Position

District Superintendent

Send communications regarding well to

Name

Earl Griffin

Address

Drawer 811, Odessa, Texas

OIL CONSERVATION COMMISSION,

By

R.D. Yarbrough

Title

OIL & GAS INSPECTOR

1. The first part of the report is a general introduction to the project.

2. The second part is a detailed description of the methodology used.

3. The third part presents the results of the study.

4. The fourth part discusses the implications of the findings and suggests areas for further research.

5. The fifth part is a conclusion summarizing the main points of the report.

6. The sixth part is a list of references used in the study.

7. The seventh part is a list of appendices.

8. The eighth part is a list of figures and tables.

9. The ninth part is a list of abbreviations.

10. The tenth part is a list of symbols.

11. The eleventh part is a list of equations.

12. The twelfth part is a list of definitions.

13. The thirteenth part is a list of footnotes.

14. The fourteenth part is a list of references.

15. The fifteenth part is a list of appendices.

16. The sixteenth part is a list of figures and tables.

17. The seventeenth part is a list of abbreviations.

18. The eighteenth part is a list of symbols.

19. The nineteenth part is a list of equations.

20. The twentieth part is a list of definitions.

21. The twenty-first part is a list of footnotes.

22. The twenty-second part is a list of references.