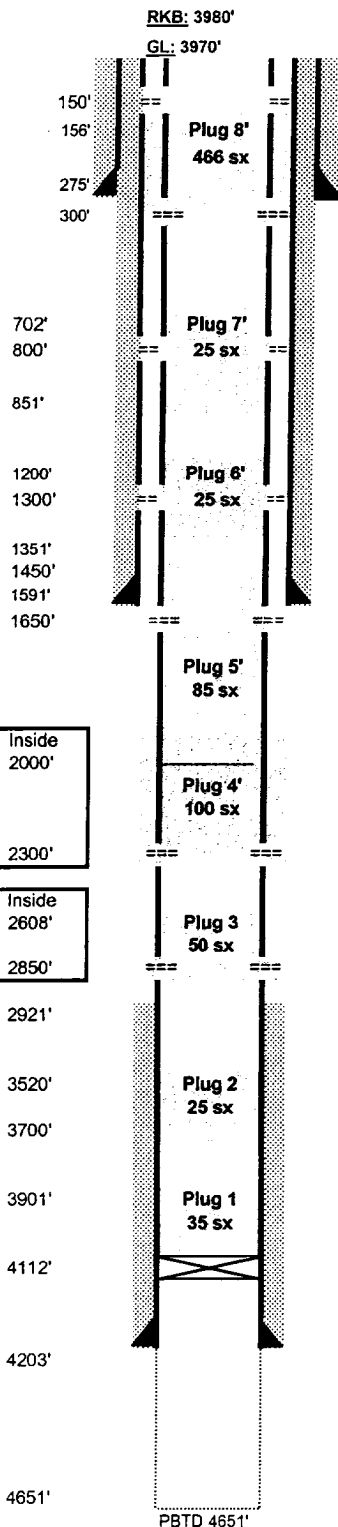


# WellBore Diagram - ConocoPhillips "Actual" Sketch - EVGSAU 3236-002

Date: 12/3/02



**Squeeze Plug #8', 466 sx.** Established injection rate of 2 bpm @ 400 psi. Displaced cmt @ 2 bpm & 400 psi. ISIP = 150 psi. Had no returns in 7" x 9-5/8" annulus.

**Surface Hole:** 17-1/2"

**Surface Casing:** 13-3/8", 48# & 54#, K-55, @ 275'. Cmt'd w/ 400 sx to surface

**Note:** hole in 7" prod. csg. between 274'-surface. Allows flow to go outside 7" down and back up into tbg when pkr was set @ 274'.

**Spot Plug #7', 25 sx.** Covers perms @ 800'. Achieved injection rate above plug # 7 of 2 bpm @ 300 psi. ISIP = 200 psi

**Note:** Perfed @ 1300' & 800' and were not able to establish injection @ 1000 psi at either depth. Permission f/ OCD to spot plugs across perms.

**Spot Plug #6', 25 sx.** Covers perms @ 1300'.

**Intermediate Hole:** 12-1/4"

**Intermediate Casing:** 9-5/8", 36# @ 1591'. Cmt'd w/ 615 sx. to surface.

**Spot Plug #5', 85 sx.** Covers the intermediate shoe. Had 25 psi SITP after 3 hrs. Well pressure tested to 500 psi f/ 318'-1500'. With blind rams SI, established pump-in rate of 2 bpm @ 600 psi f/ 0'-1450'.

**Note:** This well was TA'd due to a high GOR. Latest well test showed 5 BOPD, 2000 BWPD, and 1000 MCFPD. An attempt was made to test the casing to 500 psi, but the casing would not hold. A hole was located in the casing in the interval between 2487'-2517'.

Perfoated @ 2300': had 1150 psi SITP w/ pkr set @ 1816'.

**Squeeze Plug #4, 100 sx.** (40 sx outside, 50 sx inside). SI w/ 450 psi. Covers the Yates inside & outside pipe.

**Squeeze Plug #3, 50 sx** (20 sx in 7"x 8-3/4" anulus, 30 sx inside 7" prod. csg.), calc'd annulus interval: 2850'-2675'. Covers the Yates in 7" x 8-3/4" annulus and inside 7" prod. csg. Pumped @ 2 bpm & 1250 psi. SITP= 750 psi. 7" prod. csg. tested to 1200 psi f/ 2315'-2608' & 750 psi f/ 1816'-2608'. Covers the Yates inside & outside pipe.

TOC @ 2921'

**Production Hole:** 8-3/4"

**Spot Plug #2, 25 sx.** Covers the Queen.

**Spot Plug #1, 35 sx.** Covers the San Andres and Grayburg.

CIBP @ 4112'

**Production Casing:** 7", 24#, K-55 @ 4203'. Cmt'd w/ 146 sx. TOC @ 2921'.

6-1/4" Openhole @ 4203-4651'

**Lease and Well No:** EVGSAU 3236-002

**Location:** 660 FNL & 660 FWL

**Sec. 32, T17S-R**

**BHL:** Same

**County/State:** Lea County, New Mexico

**Field:** East Vacuum Unit

**Producing Formations:** San Andres/Grayburg

**Spud Date:** 11/10/38

**Completion Date:** 1/15/39

**API Number:** 30-025-02977

**Status:** Active Producer

## Formation Tops:

Chinle	220'
Rustler	1520'
Yates	2800'
Queen	3670'
Grayburg	4010'
San Andres	4290'

## Legend:

Original Plugs  
Secondary Plugs