

District I  
1625 N. French Dr., Hobbs, NM 88240  
District II  
811 S. 1st Street, Artesia, NM 88210  
District III  
1000 Rio Brazos Rd., Aztec, NM 87410  
District IV  
2040 South Pacheco, Santa Fe, NM 87505

State of New Mexico  
Energy, Minerals & Natural Resources

Form C-101  
Revised March 17, 1999

Oil Conservation Division  
2040 South Pacheco  
Santa Fe, NM 87505

Submit to appropriate District Office  
State Lease - 6 Copies  
Fee Lease - 5 Copies

☒ AMENDED REPORT

APPLICATION FOR PERMIT TO DRILL, RE-ENTER, DEEPEN, PLUGBACK, OR ADD A ZONE

<sup>1</sup> Operator Name and Address Phillips Petroleum Company 4001 Penbrook Street Odessa, TX 79762		<sup>2</sup> OGRID Number 017643
<sup>4</sup> Property Code 9166		<sup>3</sup> API Number 30- 025-02980
<sup>5</sup> Property Name VACUUM GB/SA UNIT EAST TRACT 3328		<sup>6</sup> Well No. 001

<sup>7</sup> Surface Location									
UL or lot no.	Section	Township	Range	Lot. Idn	Feet from the	North/South Line	Feet from the	East/West line	County
M	33	17S	35E		660	SOUTH	660	WEST	LEA

<sup>8</sup> Proposed Bottom Hole Location If Different From Surface									
UL or lot no.	Section	Township	Range	Lot. Idn	Feet from the	North/South Line	Feet from the	East/West line	County
P	32	17S	35E		660	SOUTH	510	EAST	LEA
<sup>9</sup> Proposed Pool 1 VACUUM GRAYBURG/SAN ANDRES					<sup>10</sup> Proposed Pool 2				

<sup>11</sup> Work Type Code P	<sup>12</sup> Well Type Code O	<sup>13</sup> Cable/Rotary R	<sup>14</sup> Lease Type Code S	<sup>15</sup> Ground Level Elevation 3963' RKB/3955' GL
<sup>16</sup> Multiple	<sup>17</sup> Proposed Depth 6800' MD/4610' TVD	<sup>18</sup> Formation SAN ANDRES	<sup>19</sup> Contractor POOL WELL SERVICE	<sup>20</sup> Spud Date UPON APPROVAL

<sup>21</sup> Proposed Casing and Cement Program					
Hole Size	Casing Size	Casing weight/foot	Setting Depth	Sacks of Cement	Estimated TOC
15-1/2"	13"	35#	25'	25	SURFACE
10-3/4"	8-5/8"	32#	1540'	600	SURFACE
6-1/4"	5-1/2"	17#	4140'	250	SURFACE

<sup>22</sup> Describe the proposed program. If this application is to DEEPEN or PLUG BACK, give the data on the present productive zone and proposed new productive zone. Describe the blowout prevention program, if any. Use additional sheets if necessary.

KICK OFF WITH CEMENT PLUG 4293'-4593'.  
EXISTING WELLBORE IS 4-3/4" OPENHOLE.  
DRILL A 1170' 4-3/4" OPENHOLE LATERAL TO 6800' MD.

Permit Expires 1 Year From Approval  
Date Unless Drilling Underway

<sup>23</sup> I hereby certify that the information given above is true and complete to the best of my knowledge and belief. Signature: <i>Mary Ridge for L M Sanders</i> Printed name: L. M. Sanders		OIL CONSERVATION DIVISION	
Title: Supervisor, Regulation/Proration		Approved by: ORIGINAL SIGNED BY PAUL E. KALTZ PETROLEUM ENGINEER	
Date: 3-22-02	Phone: (915) 368-1488	Approval Date: MAR 26 2002	Expiration Date:
		Attached <input type="checkbox"/>	

District I  
1625 N. French Dr., Hobbs, NM 88240  
District II  
811 S. 1st Street, Artesia, NM 88210  
District III  
1000 Rio Brazos Rd., Aztec, NM 87410  
District IV  
2040 South Pacheco, Santa Fe, NM 87505

State of New Mexico  
Energy, Minerals & Natural Resources

Form C-102  
Revised March 17, 1999

OIL CONSERVATION DIVISION  
2040 South Pacheco  
Santa Fe, NM 87505

Submit to Appropriate District Office  
State Lease - 4 Copies  
Fee Lease - 3 Copies

☒ AMENDED REPORT

WELL LOCATION AND ACREAGE DEDICATION PLAT

<sup>1</sup> API Number 30-025-02980	<sup>2</sup> Pool Code 62180	<sup>3</sup> Pool Name VACUUM GRAYBURG/SAN ANDRES
<sup>4</sup> Property Code 9166	<sup>5</sup> Property Name VACUUM GB/SA UNIT EAST TRACT 3328	<sup>6</sup> Well Number 001
<sup>7</sup> OGRID No. 017643	<sup>8</sup> Operator Name Phillips Petroleum Company	<sup>9</sup> Elevation 3963' RKB/3955' GL

<sup>10</sup> Surface Location

UL or lot no.	Section	Township	Range	Lot. Idn	Feet from the	North/South line	Feet from the	East/West line	County
M	33	17S	35E		660	SOUTH	660	WEST	LEA

<sup>11</sup> Bottom Hole Location If Different From Surface

UL or lot no.	Section	Township	Range	Lot. Idn	Feet from the	North/South line	Feet from the	East/West line	County
P	32	17S	35E		660	SOUTH	510	EAST	LEA

<sup>12</sup> Dedicated Acres 80	<sup>13</sup> Joint or Infill	<sup>14</sup> Consolidation Code	<sup>15</sup> Order No.
-------------------------------------	-------------------------------	----------------------------------	-------------------------

NO ALLOWABLE WILL BE ASSIGNED TO THIS COMPLETION UNTIL ALL INTERESTS HAVE BEEN CONSOLIDATED OR A  
NON-STANDARD UNIT HAS BEEN APPROVED BY THE DIVISION

16		Section 32 T-17-S R-35-E	Section 33 T-17-S R-35-E	<b>17 OPERATOR CERTIFICATION</b> I hereby certify that the information contained herein is true and complete to the best of my knowledge and belief.  <i>Mary Kibbey for L.M. Sanders</i> Signature L. M. Sanders Printed Name Supervisor, Regulation/Proration Title 3-22-02 Date
				<b>18 SURVEYOR CERTIFICATION</b> I hereby certify that the well location shown on this plat was plotted from field notes of actual surveys made by me or under my supervision, and that the same is true and correct to the best of my belief.  Date of Survey Signature and Seal of Professional Surveyer:  #28-W03 Certificate Number

R 34 E

R 35 E

R 34 E

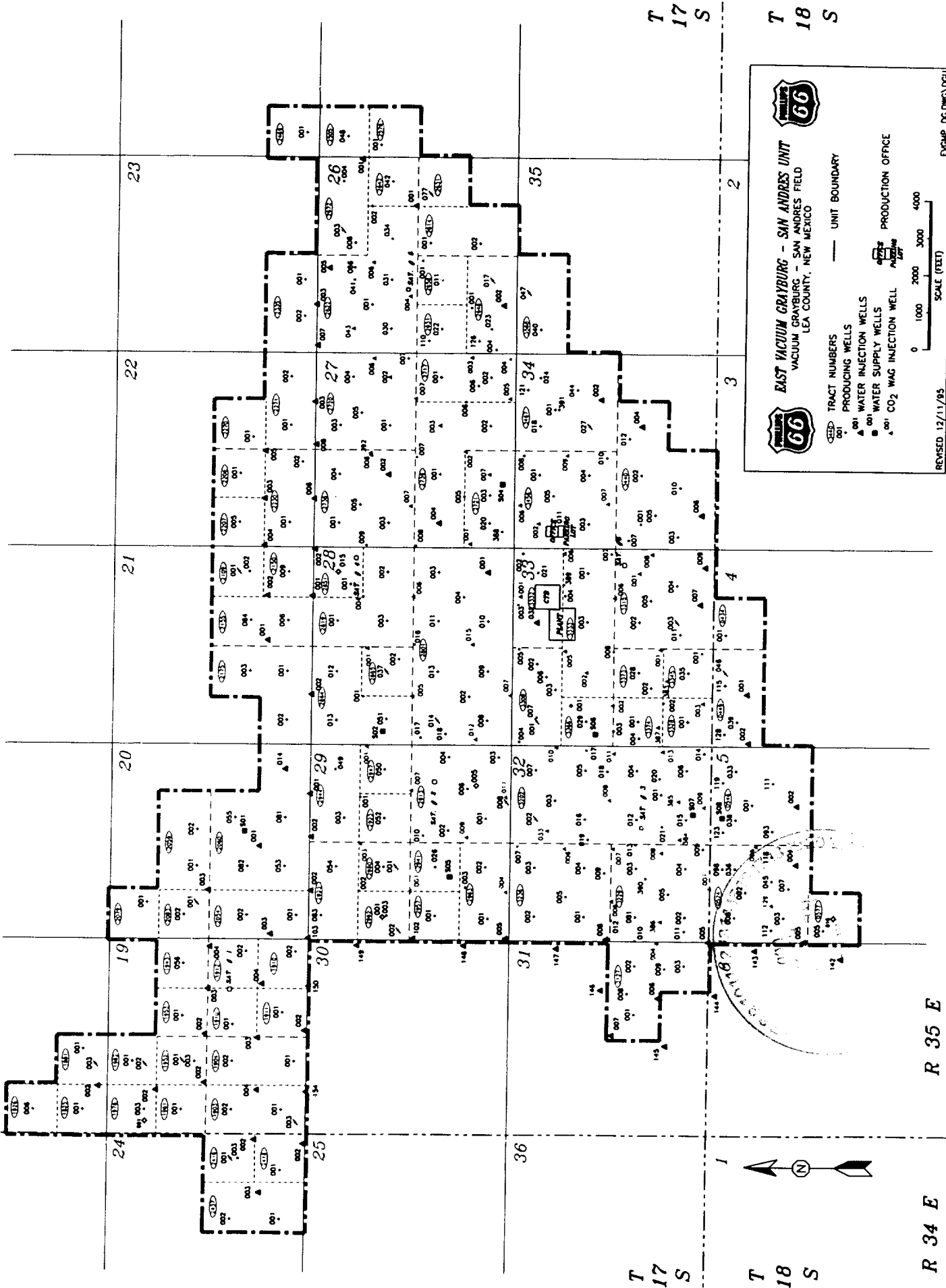
R 35 E

T 17 S

T 18 S

T 17 S

T 18 S



EAST VACUUM GRAYBURG - SAN ANDRES UNIT  
VACUUM GRAYBURG - SAN ANDRES FIELD  
LEA COUNTY, NEW MEXICO

TRACT NUMBERS  
UNIT BOUNDARY  
PRODUCING WELLS  
WATER INJECTION WELLS  
WATER SUPPLY WELLS  
CO<sub>2</sub> WAG INJECTION WELL  
PRODUCTION OFFICE

REVISED 12/11/95

EVGAP-DC.DWG\DCU