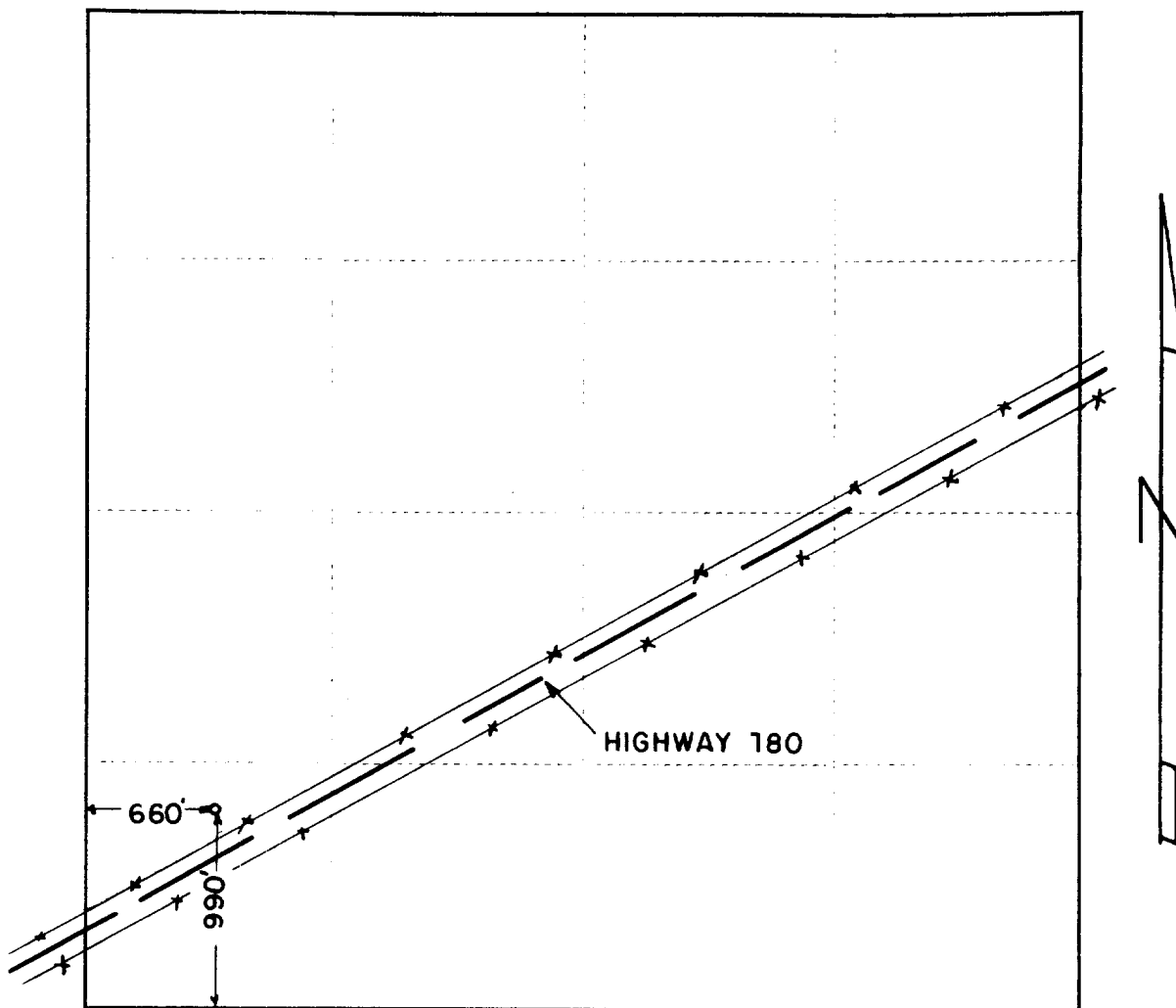


WELL LOCATION SURVEY PLAT

OPERATOR JACK MARKHAM ET AL

LEASE SUPERIOR-ALVES, TRUSTEE

WELL NO. 1



SEC. 19 , TWP. 19 S., RGE. 35 E., N.M.P.M.

I HEREBY CERTIFY THAT THIS PLAT WAS MADE
FROM NOTES TAKEN IN THE FIELD BY ME AND
THAT THE SAME IS TRUE AND CORRECT TO THE
BEST OF MY KNOWLEDGE AND BELIEF.

John W West

JOHN W. WEST, PE & LS NO. 676

10-12-54