

NEW MEXICO OIL CONSERVATION COMMISSION
Santa Fe, New Mexico

Form C-101
Revised (12/1/55)

NOTICE OF INTENTION TO DRILL

Notice must be given to the District Office of the Oil Conservation Commission and approval obtained before drilling or recompletion begins. If changes in the proposed plan are considered advisable, a copy of this notice showing such changes will be returned to the sender. Submit this notice in **QUINTUPPLICATE**. One copy will be returned following approval. See additional instructions in Rules and Regulations of the Commission. If State Land submit 6 Copies Attach Form C- 128 in triplicate to first 3 copies of form C-101

P. O. Box 4395, Midland, Texas
(Place)

10-30-61
(Date)

OIL CONSERVATION COMMISSION
SANTA FE, NEW MEXICO

Gentlemen:

You are hereby notified that it is our intention to commence the Drilling of a well to be known as

Cabot Corporation

(Company or Operator)

State Of New Mexico "I"

(Lease)

Well No. 2, in C The well is

(Unit)

located 1650 feet from the West line and 330 feet from the

North line of Section 23, T. 19-S, R. 35-E, NMPM.

(GIVE LOCATION FROM SECTION LINE) Pearl Queen Pool, Lea County

If State Land the Oil and Gas Lease is No. E-7262

If patented land the owner is

Address

We propose to drill well with drilling equipment as follows: Rotary

The status of plugging bond is Approved

Drilling Contractor A. W. Thompson, Inc.

P. O. Box 992, Odessa, Texas

We intend to complete this well in the Queen Sand

formation at an approximate depth of 5,050 feet.

CASING PROGRAM

We propose to use the following strings of Casing and to cement them as indicated:

Size of Hole	Size of Casing	Weight per Foot	New or Second Hand	Depth	Sacks Cement
12"	8-5/8"	24#	S. H.	325	300
7-7/8"	4-1/2"	9.50#	New	5,050	200

If changes in the above plans become advisable we will notify you immediately.

ADDITIONAL INFORMATION (If recompletion give full details of proposed plan of work.)

Approved, 19
Except as follows:

Cement must tie back

into Sack casing

OIL CONSERVATION COMMISSION

By

Sincerely yours,

Cabot Corporation

(Company or Operator)

By Percy C. Quinn

Position Dist. Prod. Supt.

Send Communications regarding well to

Name Percy C. O'Quinn

Address Box 4395, Midland, Texas

NEW MEXICO OIL CONSERVATION COMMISSION
WELL LOCATION AND ACREAGE DEDICATION PLAT

FORM C-128
Revised 5/1/57

SEE INSTRUCTIONS FOR COMPLETING THIS FORM ON THE REVERSE SIDE

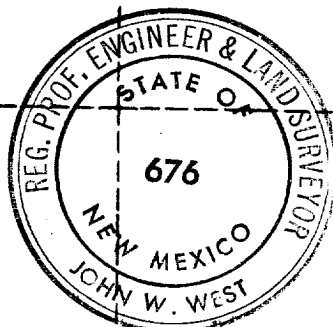
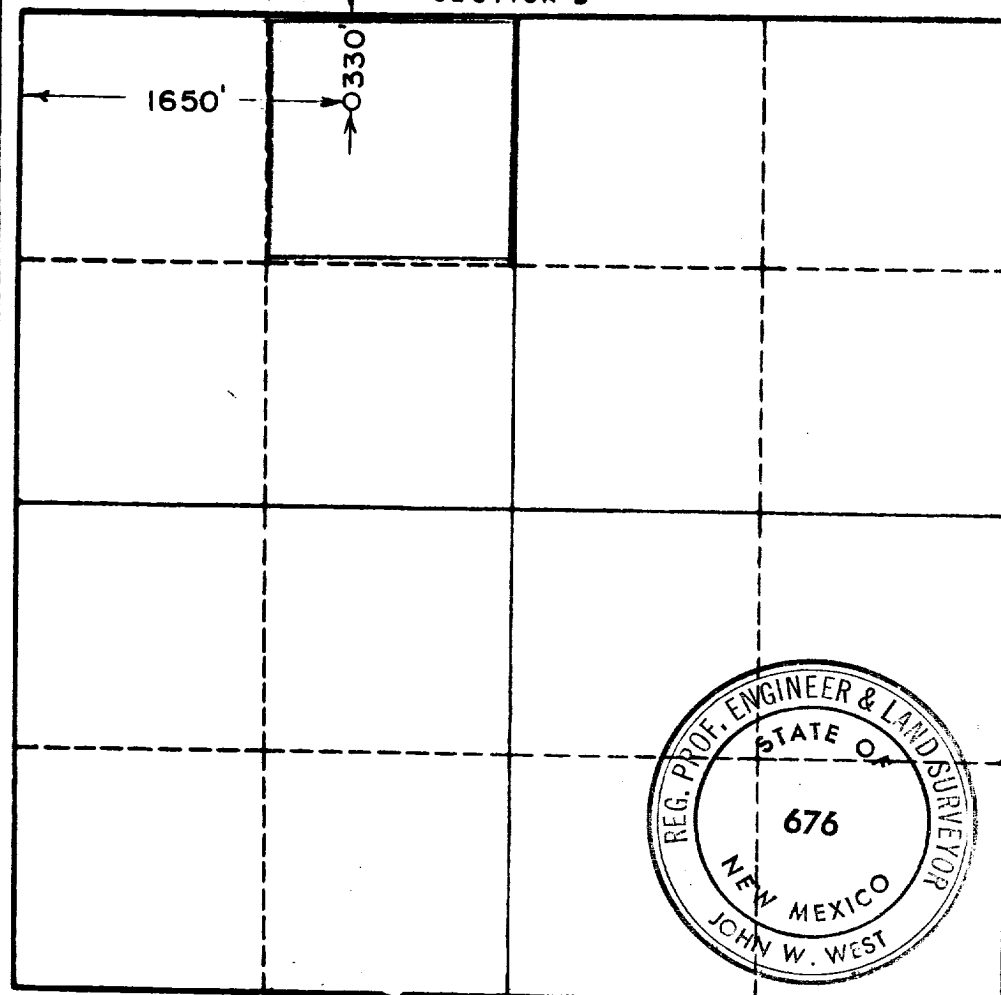
SECTION A

Operator CABOT CORPORATION		Lease 1001 OCT 31 PM 2 55		Well No. 2
Unit Letter C	Section 23	Township 19 SOUTH	Range 35 EAST	County LEA
Actual Footage Location of Well: 330 feet from the NORTH line and 1650 feet from the WEST line				
Ground Level Elev. 3813.5	Producing Formation Queen	Pool Pearl	Dedicated Acreage: 40 Acres	

1. Is the Operator the only owner in the dedicated acreage outlined on the plat below? YES ☒ NO ☐ ("Owner" means the person who has the right to drill into and to produce from any pool and to appropriate the production either for himself or for himself and another. (65-3-29 (e) NMSA 1935 Comp.)
2. If the answer to question one is "no," have the interests of all the owners been consolidated by communitization agreement or otherwise? YES ☐ NO ☐ If answer is "yes," Type of Consolidation _____
3. If the answer to question two is "no," list all the owners and their respective interests below:

Owner Cabot Corporation	Lease Description NE 1/4 of the NW 1/4 of Section 23, T-19-S,
Box 4395, Midland, Texas	R-35-E, Lea County, New Mexico

SECTION B



CERTIFICATION

I hereby certify that the information in SECTION A above is true and complete to the best of my knowledge and belief.

Percy C. Ogden
Dist. Prod. Supt.

Position
Cabot Corporation

Company
10-30-61

Date

I hereby certify that the well location shown on the plat in SECTION B was plotted from field notes of actual surveys made by me or under my supervision, and that the same is true and correct to the best of my knowledge and belief.

Date Surveyed
10-28-1961

Registered Professional Engineer and/or Land Surveyor, **JOHN W. WEST**

John W. West
Certificate No.
N. M. - P. E. & L. S. NO. 676