

NEW MEXICO OIL CONSERVATION COMMISSION

Santa Fe, New Mexico

MISCELLANEOUS NOTICES

Submit this notice in triplicate to the Oil Conservation Commission or its proper agent before the work specified is to begin. A copy will be returned to the sender on which will be given the approval, with any modifications considered advisable, or the rejection by the Commission or agent, of the plan submitted. The plan as approved should be followed, and work should not begin until approval is obtained. See additional instructions in the Rules and Regulations of the Commission.

Indicate nature of notice by checking below:

NOTICE OF INTENTION TO TEST CASING SHUT-OFF	<input checked="" type="checkbox"/>	NOTICE OF INTENTION TO SHOOT OR CHEMICALLY TREAT WELL	
NOTICE OF INTENTION TO CHANGE PLANS		NOTICE OF INTENTION TO PULL OR OTHERWISE ALTER CASING	
NOTICE OF INTENTION TO REPAIR WELL		NOTICE OF INTENTION TO PLUG WELL	
NOTICE OF INTENTION TO DEEPEN WELL			

Midland, Texas

February 21, 1938

Place

Date

OIL CONSERVATION COMMISSION,
Santa Fe, New Mexico.

Gentlemen:

Following is a notice of intention to do certain work as described below at the

Phillips Petroleum Company**Santa Fe**Well No. **Two** in **SE/4**

Company or Operator

Lease

of Sec. **30**, T. **17-S**, R. **35-E**, N. M. P. M., **Vacuum** Field,
Lea County.

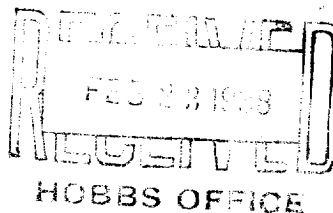
FULL DETAILS OF PROPOSED PLAN OF WORK

FOLLOW INSTRUCTIONS IN THE RULES AND REGULATIONS OF THE COMMISSION

T. D. 1563 Anhydrite. Set 9-5/8" casing at 1540' 11" February 20, 1938.
Cemented with 275 sacks Trinity Common Portland cement.

Test for water shut-off will be made 1:00 pm February 23, 1938.

DUPLICATE



Approved February 23, 19 38
except as follows:

Phillips Petroleum Company

Company or Operator

By

Earl Griffin

Position

District Superintendent

Send communications regarding well to

Name

Earl Griffin

Address

Box 1390, Midland, Texas

OIL CONSERVATION COMMISSION,

By

Guy Shepard

Title

Oil & Gas Inspector

P

Figure 1 consists of seven line drawings labeled (a) through (g), illustrating the stages of nest development. (a) shows a single egg. (b) shows a small bird with a long tail and a single wing visible. (c) shows a bird with a long tail and two wings visible. (d) shows a bird with a long tail and two wings visible, with a small bird perched on its back. (e) shows a bird with a long tail and two wings visible, with a small bird perched on its back. (f) shows a bird with a long tail and two wings visible, with a small bird perched on its back. (g) shows a fledgling bird with a long tail and two wings visible.

1. *Chlorophyll a* and *Chlorophyll b* were determined by the method of Arar and Collins (1971) using a Shimadzu 1010 spectrophotometer.

1. *Phragmites* (common in the marshes of the lower Mississippi River and in the coastal marshes of the Gulf of Mexico).