

DISTRICT I

P.O. Box 1980, Hobbs, NM 88240

DISTRICT II

P.O. Box Drawer DD, Artesia, NM 88210

DISTRICT III

1000 Rio Brazos Rd., Aztec, NM 87410

OIL CONSERVATION DIVISION

P.O. Box 2088

Santa Fe, New Mexico 87504-2088

WELL API NO.	30-025-20111
5. Indicate Type of Lease	STATE <input checked="" type="checkbox"/> FEE <input type="checkbox"/>
6. State Oil / Gas Lease No.	B-155-1
7. Lease Name or Unit Agreement Name	NEW MEXICO O STATE NCT-1
8. Well No.	20
9. Pool Name or Wildcat	VACUUM YATES
10. Elevation (Show whether DF, RKB, RT, GR, etc.)	4005' GL

SUNDRY NOTICES AND REPORTS ON WELL
(DO NOT USE THIS FORM FOR PROPOSALS TO DRILL OR TO DEEPEN OR PLUG BACK TO A
DIFFERENT RESERVOIR. USE APPLICATION FOR PERMIT
(FORM C-101) FOR SUCH PROPOSALS.)

1. Type of Well: OIL WELL ☐ GAS WELL ☒ OTHER ☐

2. Name of Operator
TEXACO EXPLORATION & PRODUCTION INC.

3. Address of Operator
205 E. Bender, HOBBS, NM 88240

4. Well Location
Unit Letter E : 1980 Feet From The NORTH Line and 467 Feet From The WEST Line
Section 36 Township 17-S Range 34-E NMPM LEA COUNTY

10. Elevation (Show whether DF, RKB, RT, GR, etc.) 4005' GL

11. Check Appropriate Box to Indicate Nature of Notice, Report, or Other Data

NOTICE OF INTENTION TO:

PERFORM REMEDIAL WORK ☐ PLUG AND ABANDON ☐
TEMPORARILY ABANDON ☐ CHANGE PLANS ☐
PULL OR ALTER CASING ☐
OTHER: ☐

SUBSEQUENT REPORT OF:

REMEDIAL WORK ☐ ALTERING CASING ☐
COMMENCE DRILLING OPERATION ☐ PLUG AND ABANDONMENT ☐
CASING TEST AND CEMENT JOB ☐
OTHER: ☒ ABANDONED BLINEBRY, PB GLORIETA TO YATES

12. Describe Proposed or Completed Operations (Clearly state all pertinent details, and give pertinent dates, including estimated date of starting any proposed work) SEE RULE 1103.

2/8/96 - 3/21/96

1. Notified NMOCD of abandonment 24 hours prior to starting workover. NU BOP on East-Glorieta string. Rigged up wireline & mast pole. Ran gauge ring to 6208' (TD). POH, switched strings. Ran gauge ring in West- Blinebry string to 6002'. TOH w/ gauge ring. Ran pulsed neutron log from 3730'-2730' in East-Glorieta string.
2. Rigged up coiled tubing unit w/ retrievable packer on East-Glorieta string. TIH & set pkr @ 5700'. Couldn't establish communication through commingled perfs on West-Blinebry string. Attempted to sqz Glorieta perfs with 50 sx Class H cmt, no pressure. Raised pkr to 5000', sqz Glorieta perfs w/ 60 sx Class H cmt. SION. Released pkr, tagged cmt @ 5269'. Pumped 25 sx Class H cmt from 5000'-4000'. WOC, tagged top of cmt @ 4120' Cird hole w/ 2% KCL water. (PBT) @ 4120'
3. Moved to West-Blinebry string. TIH to 5900', pumped 25 sx Class H cmt from 5000'-4000'. SION. TIH & tagged cmt @ 3986'. POH to 3550', set cmt plug from 3550'-2550', WOC. Tagged cmt @ 2795', set cmt plug from 2797'-2550'. POH to 400' & set cmt plug from 400'-surface. SION.
4. Moved to East-Glorieta string. Cleaned out hole w/ CTU to 3436'. Perforate 2982'-86', 3017'-23', 33'-36', 39'-43', 86'-94', 3159'-64', 70'-93', 99'-3203', 20'-26' @ 2 spf in Vacuum Yates pay.
5. Set pkr on CTU @ 2895'. Acidized Vacuum Yates perfs from 2982'-3226' w/ 5000 gals 15% NEFE HCL. Max P = 3000#, AIR = 1.6 BPM. SI for 2 hrs. Opened up well on 10/64" choke & flowed back 60 bbls load water in 5 hrs. Shut-in well on 3/21/96.
6. On 3/23/96, opened up well to producing from the Vacuum Yates.
7. On 4/2/96, shut-in well waiting on gas contract.

I hereby certify that the information above is true and complete to the best of my knowledge and belief.

SIGNATURE Monte C. Duncan TITLE Engr Asst

DATE 8/7/96

TYPE OR PRINT NAME Monte C. Duncan

Telephone No. 397-0418

(This space for State Use)

APPROVED BY District Supervisor TITLE District Supervisor

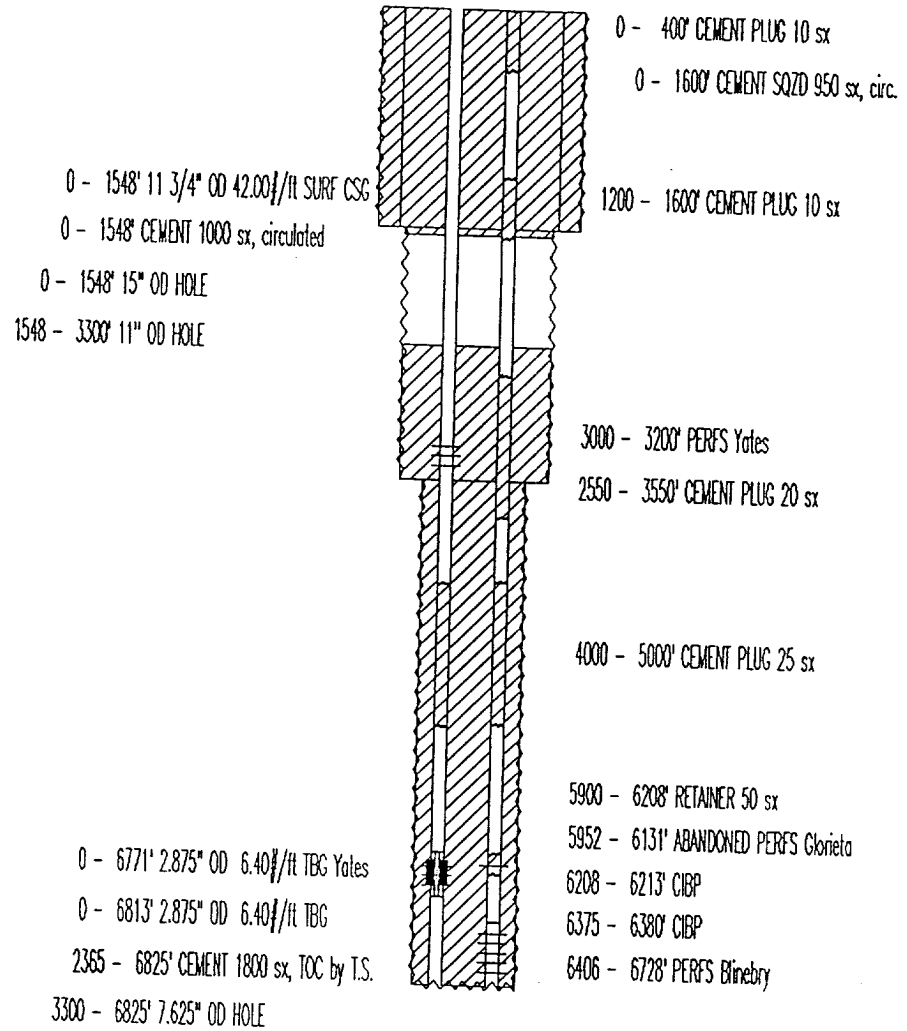
DATE

CONDITIONS OF APPROVAL, IF ANY:

2A Vacuum Glorieta

Proposed Yates Recompletion

TEXACO E&P INC.
NM "O" State NCT-1 N
API# 30-025-20111



1980 FNL & 467 FNL
SEC 36, TWN 17S, RANGE 34E
ELEVATION: 4005' GR
COMPLETION DATE: 8-26-63
COMPLETION INTERVAL: 5952' - 6131' (Glorieta)
6406' - 6728' (Blinbry)

