

DISTRICT I

P.O. Box 1980, Hobbs, NM 88240

DISTRICT II

P.O. Box Drawer DD, Artesia, NM 88210

DISTRICT III

1000 Rio Brazos Rd., Aztec, NM 87410

**OIL CONSERVATION DIVISION**

P.O. Box 2088

Santa Fe, New Mexico 87504-2088

WELL API NO.	30 - 025 - 20125
5. Indicate Type of Lease	STATE <input checked="" type="checkbox"/> FEE <input type="checkbox"/>
6. State Oil / Gas Lease No.	B-155-1
7. Lease Name or Unit Agreement Name	NEW MEXICO -O- STATE NCT-1
8. Well No.	17
9. Pool Name or Wildcat	VACUUM WOLFCAMP
10. Elevation (Show whether DF, RKB, RT, GR, etc.)	3997' GL

**SUNDRY NOTICES AND REPORTS ON WELL**  
(DO NOT USE THIS FORM FOR PROPOSALS TO DRILL OR TO DEEPEN OR PLUG BACK TO A DIFFERENT RESERVOIR. USE "APPLICATION FOR PERMIT" (FORM C-101) FOR SUCH PROPOSALS.)

1. Type of Well: OIL WELL ☒ GAS WELL ☐ OTHER ☐

2. Name of Operator  
TEXACO EXPLORATION & PRODUCTION INC

3. Address of Operator  
P.O. BOX 730, HOBBS, NM 88240

4. Well Location  
Unit Letter N : 760 Feet From The SOUTH Line and 2080 Feet From The WEST Line  
Section 36 Township 17-S Range 34-E NMPM LEA COUNTY

11. Check Appropriate Box to Indicate Nature of Notice, Report, or Other Data

NOTICE OF INTENTION TO:

PERFORM REMEDIAL WORK ☒ PLUG AND ABANDON ☐  
TEMPORARILY ABANDON ☐ CHANGE PLANS ☐  
PULL OR ALTER CASING ☐  
OTHER: add Upper Wolfcamp perms ☐

SUBSEQUENT REPORT OF:

REMEDIAL WORK ☐ ALTERING CASING ☐  
COMMENCE DRILLING OPERATION ☐ PLUG AND ABANDONMENT ☐  
CASING TEST AND CEMENT JOB ☐  
OTHER: ☐

12. Describe Proposed or Completed Operations (Clearly state all pertinent details, and give pertinent dates, including estimated date of starting any proposed work) SEE RULE 1103.

- 1) MIRU. Pull rods and pump from 3-1/2" string. NU BOP and POH with tubing.
- 2) Y STRING: (2-7/8", U. Penn string) TIH with 2-5/16" bit and casing scraper and clean out to PBTD @ 9358'. If PBTD lower, then set CIBP @ 9350' and cap w/ 35' cement. Test casing to 500 psi.
- 3) X STRING: (2-7/8", original WC string) TIH with 2-5/16" bit and casing scraper and clean out to PBTD @ 10,070'. POH. set CIBP @ +/- 9300'. Test casing to 500 psi.
- 4) Z STRING: (3-1/2", current WC string) TIH with 2-7/8" bit and casing scraper and clean out to PBTD @ 11,875'. Set CIBP @ 9950'. POH.
- 5) By wireline, selectively perforate the following Wolfcamp intervals using a 2-1/8" strip gun, 120° phasing, @ 2 SPF: (126' net perms)  
9414'-27', 9432'-42', 9455'-59', 9464'-66', 9476'-79', 9500'-05', 9521'-29', 9603'-57', 9770'-74', 9780'-87', 9899' & 9904'-08'.
- 6) GIH with 3-1/2" treating packer and set above perms. Load backside and test to 500 psi. Acidize new perms w/ 15,000 gals 15% NEFE in three stages.
- 7) GIH with bit. Clean out salt and circulate hole clean.
- 8) POH with packer and tubing. Run production equipment in 3-1/2" casing string and return to production.

I hereby certify that the information above is true and complete to the best of my knowledge and belief.

SIGNATURE Robert T. McNaughton TITLE Prod. Engineer DATE 9/12/94

TYPE OR PRINT NAME Robert T. McNaughton Telephone No. 397-0428

(This space for State Use)

APPROVED BY SEP 16 1994 TITLE SEP 16 1994 DATE SEP 16 1994

CONDITIONS OF APPROVAL, IF ANY:

# WELL DATA SHEET

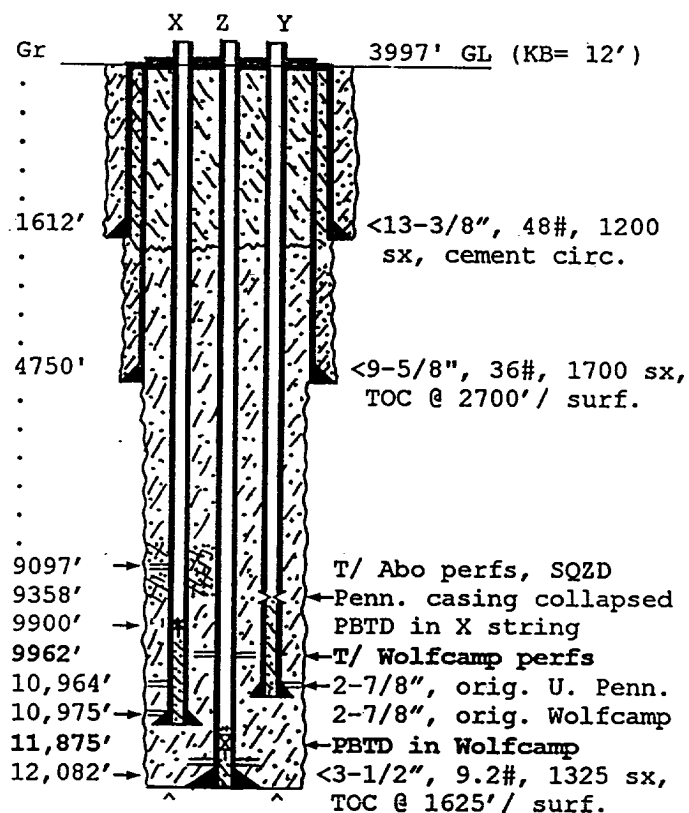
PO-90m  
(8/94)

OPERATOR: Texaco Exploration & Production Inc. WELL: New Mexico O State NCT-1 #17

FOOTAGE LOCATION: 760 FSL, 2080 FWL Sec./Twn/Rng: Unit N, Sec 36, T-17-S, R-34-E

Lea County, New Mexico

## SCHEMATIC



current ASD ^^ ASD  
status: SI  
(WC)

Tops:

Salt 1577'-2730'  
San Andres 4220'  
Glorieta 5815'  
Abo 7896'  
Wolfcamp 9260'  
U. Penn. 10,088'  
Devonian 11,926'

## TABULAR DATA

Surface Casing: Set at: 1612'

Size 13-3/8", 48# Cemented with 1200 sx.

TOC surface ' determined by circulated

Hole Size 20" Spud Date: 3-14-63

Intermediate casing: Set at: 4750'

Size 9-5/8", 36# Cemented with 1700 sx.

TOC 2700' / surf determined by calc. / SQZ

Hole Size 12-1/4", annulus SQZD w/ 700 sx

Production Casing: Set at: 12,082'

Size three strings Cemented with 1325 sx

TOC 1625' / surf. determined by temp. / SQZ

Hole Size 8-3/4"

U. Penn.: 2-7/8", 6.4# @ 10,964' (Y string)  
Wolfcamp: 2-7/8", 6.4# @ 10,975' (X string)  
Devonian: 3-1/2", 9.2# @ 12,082' (Z string)

## Production Intervals:

Wolfcamp: 9962' to 10,029' w/ 108 perfs, open  
PBTB @ 11,875' - retainer  
Wolfcamp: 9962' to 10,004' in X string SQZD  
PBTB @ 9,900' - retainer, 50 sx

U. Penn.: 10,130' to 10,140' w/ 20 perfs, SQZD  
PBTB @ 9,358' - collapsed casing  
10,130' to 10,140' w/ 20 perfs, SQZD  
PBTB @ 10,070 in X (WC) string, ASD 9/69  
Devonian: 11,980' to 11,990' w/ 20 perfs, SQZD  
PBTB @ 11,875', ASD 6/69.

RECEIVED

SEP 15 1994