

Submit to: Appropriate District Office
State Lease - 6 copies
Fee Lease - 5 copies
District I
1625 N. French, Hobbs, NM 88240
District II
811 South First, Artesia, NM 87210
District III
1000 Rio Brazos Rd., Aztec, NM 87410
District IV
2040 South Pacheco, Santa Fe, NM 87505

State of New Mexico
Energy, Minerals and Natural Resources

OIL CONSERVATION DIVISION
2040 South Pacheco
Santa Fe, NM 87505

Form C-105
Revised March 25, 1999

WELL API NO.
30-025-20148

5. Indicate Type Of Lease
STATE ☒ FEE ☐

6. State Oil & Gas Lease No.
B-1520

WELL COMPLETION OR RECOMPLETION REPORT AND LOG

1a. Type of Well:
OIL WELL ☒ GAS WELL ☐ DRY ☐ OTHER _____

b. Type of Completion:
NEW WELL ☐ WORK OVER ☐ DEEPEN ☐ PLUG BACK ☐ DIFF. RESVR. ☐ OTHER Horizontal

2. Name of Operator
~~Texas Exploration & Production~~ **CHEVRON U.S.A. INC.**

3. Address of Operator
~~500 N. Lorraine~~ Midland, Texas 79701 **515 Smith Rd.**

4. Well Location BHL: K-25-17s-34e, 1782/S & 1321/W

Unit Letter **I** : **1780** Feet From The **South** Line and **660** Feet From The **East** Line

Section **26** Township **17S** Range **34E** NMPM **1ea** County

10. Date Spudded **12-18-02** 11. Date T.D. Reached **12-24-02** 12. Date Compl. (Ready to Prod.) **01-09-03** 13. Elevations (DF & RKB, RT, GR, etc.) 14. Elev. Casinghead

15. Total Depth **7837'** 16. Plug Back T.D. 17. If Multiple Compl. How Many Zones? 18. Intervals Drilled By Rotary Tools Cable Tools

19. Producing Interval(s), of this completion - Top, Bottom, Name **5775-7837' Glorieta OH** 20. Was Directional Survey Made **Yes**

21. Type Electric and Other Logs Run **N/A** 22. Was Well Cored **No**

23. CASING RECORD (Report all strings set in well)

CASING SIZE	WEIGHT LB./FT.	DEPTH SET	HOLE SIZE	CEMENTING RECORD	AMOUNT PULLED
NO CHANGE					

24. LINER RECORD

SIZE	TOP	BOTTOM	SACKS CEMENT	SCREEN	SIZE	DEPTH SET	PACKER SET
					2-7/8"	5847'	

26. Perforation record (interval, size, and number)

5842-5962'
5775-7837' OH

27. ACID, SHOT, FRACTURE, CEMENT, SQUEEZE, ETC.

DEPTH INTERVAL	AMOUNT AND KIND MATERIAL USED
5775-7837'	30,000 gals 15% HCL

28. PRODUCTION

Date First Production **01-10-03** Production Method (Flowing, gas lift, pumping - Size and type pump) **Pump - Subpump** Well Status (Prod. or Shut-in) **Prod**

Date of Test **01-18-03** Hours Tested **24 hours** Choke Size Prod'n For Test Period Oil - Bbl. **150** Gas - MCF **158** Water - Bbl. **76** Gas - Oil Ratio
Flow Tubing Press. Casing Pressure Calculated 24-Hour Rate Oil - Bbl. Gas - MCF Water - Bbl. Oil Gravity - API -(Corr.)

29. Disposition of Gas (Sold, used for fuel, vented, etc.)

Sold

Test Witnessed By

30. List Attachments

Notarized Deviations

31. I hereby certify that the information shown on both sides of this form is true and complete to the best of my knowledge and belief

Signature **Laura Skinner** Printed Name **Laura Skinner** Title **Reg. Specialist** Date **02-19-03**

DISTRICT I

P.O. Box 1980, Hobbs, NM 88241-1980

DISTRICT II

P.O. Box Drawer DD, Artesia, NM 88211-0719

DISTRICT III

1000 Rio Brazos Rd., Aztec, NM 87410

DISTRICT IV

P.O. Box 2088, Santa Fe, NM 87504-2088

State of New Mexico

Energy, Minerals and Natural Resources Department

OIL CONSERVATION DIVISION

P.O. Box 2088

Santa Fe, New Mexico 87504-2088

Form C-102

Revised February 10, 1994

Instructions on back

Submit to Appropriate District Office

State Lease - 4 Copies

Fee Lease - 3 Copies

☒ AMENDED REPORT**WELL LOCATION AND ACREAGE DEDICATION PLAT**

¹ API Number 3002520148	² Pool Code 62160	³ Pool Name Vacuum Glorieta
⁴ Property Code 30021	⁵ Property Name Vacuum Glorieta West Unit	⁶ Well No. 32H
⁷ OGRID Number 022351	⁸ Operator Name TEXACO EXPLORATION & PRODUCTION INC.	⁹ Elevation 4022' KB

¹⁰ Surface Location

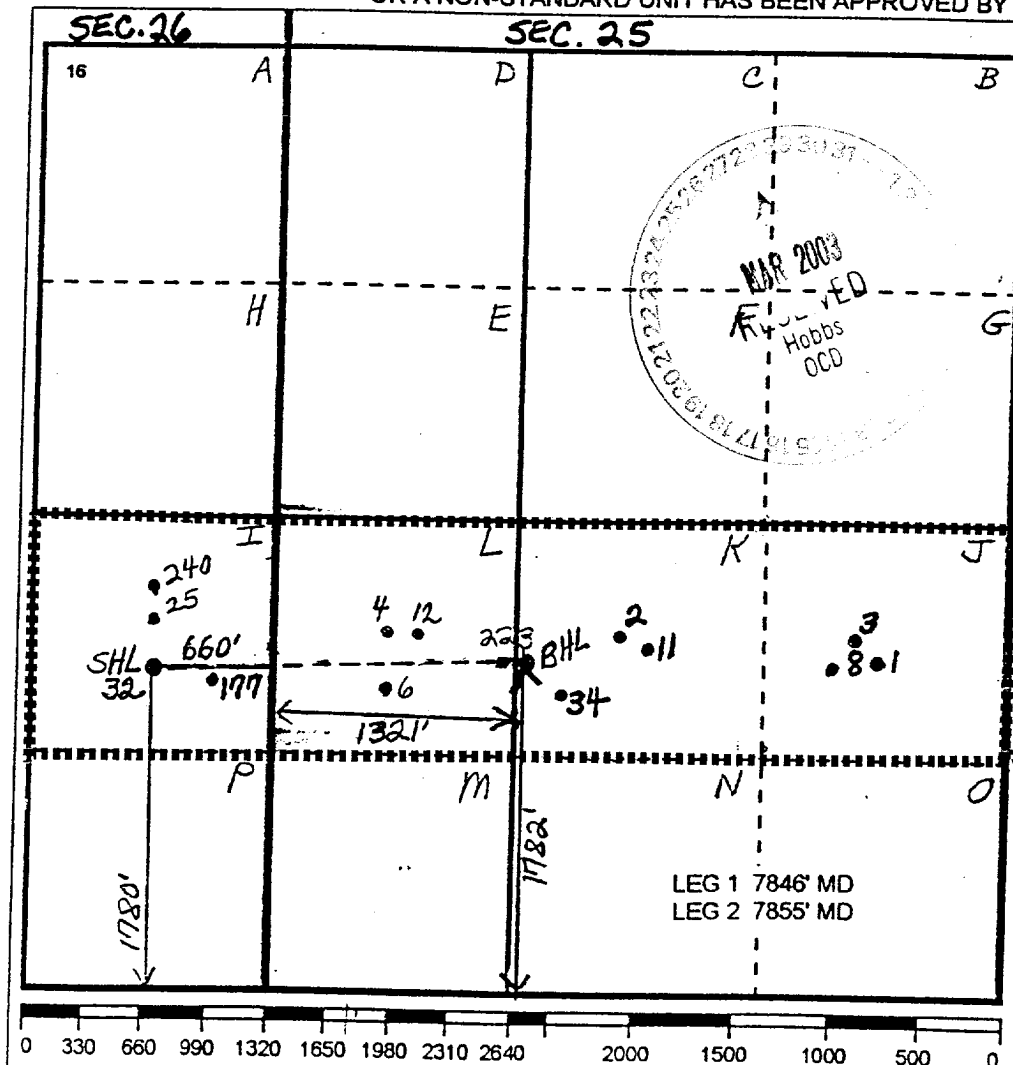
Ul or lot no.	Section	Township	Range	Lot.Idn	Feet From The	North/South Line	Feet From The	East/West Line	County
I	26	17S	34E		1780	South	660	East	Lea

¹¹ Bottom Hole Location If Different From Surface

Ul or lot no.	Section	Township	Range	Lot.Idn	Feet From The	North/South Line	Feet From The	East/West Line	County
K	25	17S	34E		1782	South	1321	West	Lea

¹² Dedicated Acres	¹³ Joint or Infill No	¹⁴ Consolidation Code	¹⁵ Order No.
-------------------------------	-------------------------------------	----------------------------------	-------------------------

NO ALLOWABLE WILL BE ASSIGNED TO THIS COMPLETION UNTIL ALL INTERESTS HAVE BEEN CONSOLIDATED
OR A NON-STANDARD UNIT HAS BEEN APPROVED BY THE DIVISION

**17 OPERATOR CERTIFICATION**

I hereby certify that the information contained herein is true and complete to the best of my knowledge and belief

Signature

Laura Skinner

Printed Name

Laura Skinner

Position

Regulatory Specialist

Date

2-11-03

18 SURVEYOR CERTIFICATION

I hereby certify that the well location shown on this plat was plotted from field notes of actual surveys made by me or under my supervision, and that the same is true and correct to the best of my knowledge and belief.

Date Surveyed

Signature & Seal of
Professional Surveyor

Certificate No.