

NEW ME TO OIL CONSERVATION COMMISS
Santa Fe, New Mexico

Form G-101
Revised (12/1/55)

NOTICE OF INTENTION TO DRILL

Notice must be given to the District Office of the Oil Conservation Commission and approval obtained before drilling or recompletion begins. If changes in the proposed plan are considered advisable, a copy of this notice showing such changes will be returned to the sender. Submit this notice in QUINTUPLICATE. One copy will be returned following approval. See additional instructions in Rules and Regulations of the Commission. If State Land submit 6 Copies Attach Form G-128 in triplicate to first 3 copies of form G-101

Midland, Texas

(Place)

August 7, 1963

(Date)

OIL CONSERVATION COMMISSION
SANTA FE, NEW MEXICO

Gentlemen:

You are hereby notified that it is our intention to commence the Drilling of a well to be known as

Union Oil Company of California

(Company or Operator)

State

(Lease)

Well No. 1-15

in

J

(Unit)

The well is

located 1650 feet from the south line and 1980 feet from the

East

Line of Section 15

T. 19 -S

R. 35 E

NMPM.

(GIVE LOCATION FROM SECTION LINE)

Pearl Queen

Pool,

Lea

County

If State Land the Oil and Gas Lease is No. E-7360

If patented land the owner is -

Address -

We propose to drill well with drilling equipment as follows: Rotary Rig

The status of plugging bond is J. S. Ward & Son

Artesia, New Mexico

Drilling Contractor Cactus Drilling Company

Midland, Texas

We intend to complete this well in the Grayburg

formation at an approximate depth of 5050 feet.

CASING PROGRAM

We propose to use the following strings of Casing and to cement them as indicated:

Size of Hole	Size of Casing	Weight per Foot	New or Second Hand	Depth	Sacks Cement
11"	8-5/8"	24#	New	300'	150 *
6-3/4"	4-1/2"	9.5#	New	5050'	300 *

If changes in the above plans become advisable we will notify you immediately.

ADDITIONAL INFORMATION (If recompletion give full details of proposed plan of work.)

Surface casing cement to circulate to surface.

* Casing and cement will cover all commercial horizons.

Approved....., 19.....
Except as follows:

Sincerely yours,

Union Oil Company of California

(Company or Operator)

By

Position Production Clerk

Send Communications regarding well to

Name Union Oil Company of California

Address 619 West Texas Ave., Midland, Texas

OIL CONSERVATION COMMISSION

NEW MEXICO OIL CONSERVATION COMMISSION

WELL LOCATION AND ACREAGE DEDICATION PLAT

FORM C-128
Revised 5/1/57

SEE INSTRUCTIONS FOR COMPLETING THIS FORM ON THE REVERSE SIDE

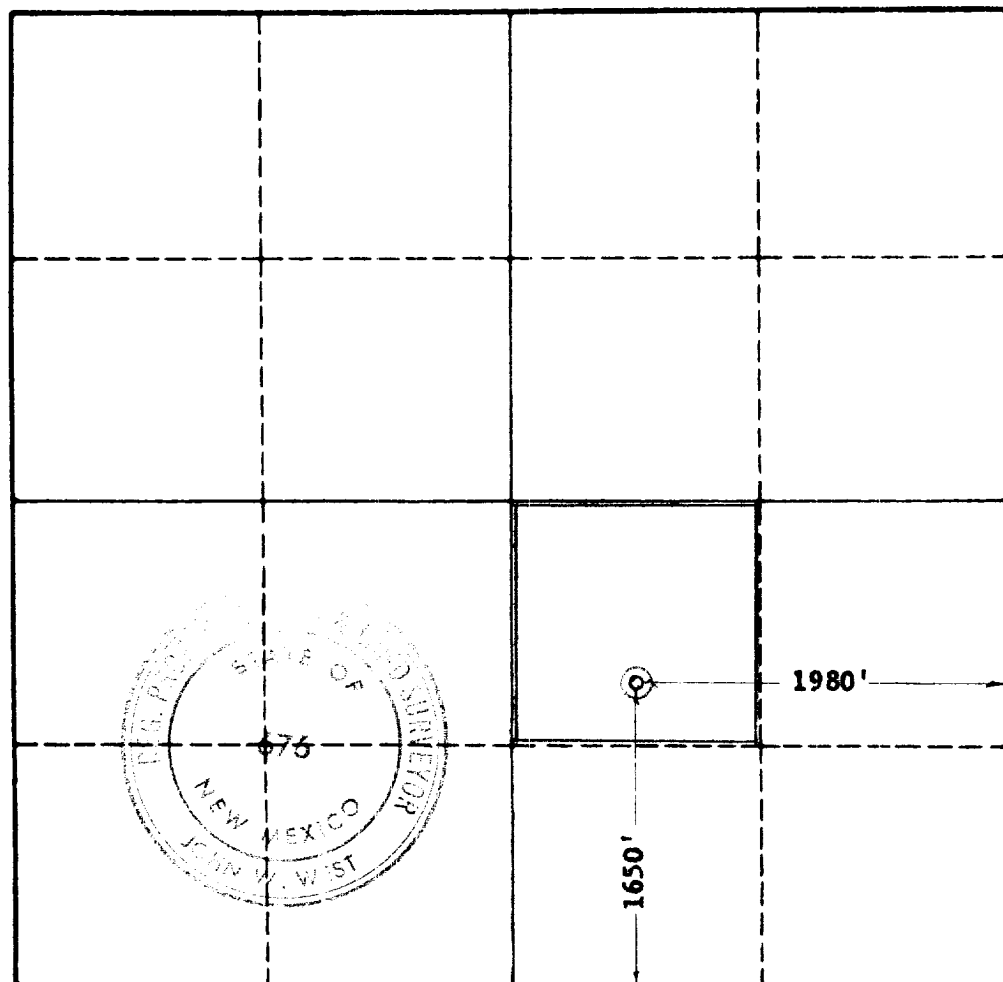
SECTION A

Operator UNION OIL COMPANY OF CALIFORNIA			Lease STATE		Well No. 1-15
Unit Letter J	Section 15	Township 19 SOUTH	Range 35 EAST	County LEA	
Actual Footage Location of Well: 1650 feet from the SOUTH line and 1980 feet from the EAST line					
Ground Level Elev. Unknown	Producing Formation Grayburg		Pool Pearl Queen		Dedicated Acreage: 40 Acres

1. Is the Operator the only owner in the dedicated acreage outlined on the plat below? YES X NO ____ . ("Owner" means the person who has the right to drill into and to produce from any pool and to appropriate the production either for himself or for himself and another. (65-3-29 (e) NMSA 1935 Comp.)
2. If the answer to question one is "no," have the interests of all the owners been consolidated by communitization agreement or otherwise? YES ____ NO ____ . If answer is "yes," Type of Consolidation ____
3. If the answer to question two is "no," list all the owners and their respective interests below:

Owner	Land Description

SECTION B



CERTIFICATION

I hereby certify that the information in SECTION A above is true and complete to the best of my knowledge and belief.

Name C. D. Dixon
 Position Production Clerk
 Company Union Oil Company of Calif.
 Date August 7, 1963

I hereby certify that the well location shown on the plat in SECTION B was plotted from field notes of actual surveys made by me or under my supervision, and that the same is true and correct to the best of my knowledge and belief.

Date Surveyed AUGUST 3, 1963
 Registered Professional Engineer and/or Land Surveyor, JOHN W. WEST
John W. West
 Certificate No. N. M. - P. E. & L. S. NO. 676

0 330 660 990 1320 1650 1980 2310 2640 2000 1500 1000 500 0