

DISTRICT I  
P.O. Box 1980, Hobbs, NM 88240

DISTRICT II  
P.O. Drawer DD, Artesia, NM 88210

DISTRICT III  
1000 Rio Brazos Rd., Aztec, NM 87410

**OIL CONSERVATION DIVISION**  
P.O. Box 2088  
Santa Fe, New Mexico 87504-2088

WELL API NO. 30-025-20270
5. Indicate Type of Lease STATE <input checked="" type="checkbox"/> FEE <input type="checkbox"/>
6. State Oil & Gas Lease No. B-1606
7. Lease Name or Unit Agreement Name Santa Fe
8. Well No. 87
9. Pool name or Wildcat Vacuum Glorietta, Vacuum N. (Abo) Vacuum (Wolfcamp)
10. Elevation (Show whether DF, RKB, RT, GR, etc.) 3982' GR

**SUNDRY NOTICES AND REPORTS ON WELLS**  
(DO NOT USE THIS FORM FOR PROPOSALS TO DRILL OR TO DEEPEN OR PLUG BACK TO A DIFFERENT RESERVOIR. USE "APPLICATION FOR PERMIT" (FORM C-101) FOR SUCH PROPOSALS.)

1. Type of Well: OIL WELL <input checked="" type="checkbox"/> GAS WELL <input type="checkbox"/> OTHER <input type="checkbox"/>	2. Name of Operator Phillips Petroleum Company
3. Address of Operator 4001 Penbrook Street, Odessa, Texas 79762	4. Well Location Unit Letter <u>L</u> : <u>2130</u> Feet From The <u>South</u> Line and <u>660</u> Feet From The <u>West</u> Line Section <u>31</u> Township <u>17-S</u> Range <u>35-E</u> NMPM <u>Lea</u> County <u></u>
10. Elevation (Show whether DF, RKB, RT, GR, etc.) 3982' GR	

11. Check Appropriate Box to Indicate Nature of Notice, Report, or Other Data

NOTICE OF INTENTION TO:		SUBSEQUENT REPORT OF:	
PERFORM REMEDIAL WORK <input type="checkbox"/>	PLUG AND ABANDON <input type="checkbox"/>	REMEDIAL WORK <input type="checkbox"/>	ALTERING CASING <input type="checkbox"/>
TEMPORARILY ABANDON <input type="checkbox"/>	CHANGE PLANS <input type="checkbox"/>	COMMENCE DRILLING OPNS. <input type="checkbox"/>	PLUG AND ABANDONMENT <input type="checkbox"/>
PULL OR ALTER CASING <input type="checkbox"/>	OTHER: <input type="checkbox"/>	CASING TEST AND CEMENT JOB <input type="checkbox"/>	OTHER: <input checked="" type="checkbox"/>

12. Describe Proposed or Completed Operations (Clearly state all pertinent details, and give pertinent dates, including estimated date of starting any proposed work) SEE RULE 1103.

- 12  
4-31-91 MI and RU DDU. COOH and LD rods above rod part. Install BOP. Attempt to COOH with tubing. Tubing parted. Tubing is parted approximately 5800' and rods are parted at 4025'. Rods have a parted fishing tool on top rod. GIH with 1-13/16" left-hand drill pipe and fish parted fishing tool.
- 1-02-92 Tagged top of fish at 4110' came out of hole, only had rod box on top of fishing tool already in hole
- 1-05-92 Ran 1-1/4" drill pipe back in hole with 3/4 box to screw on top of fishing tool on rods. COOH with 28-7/8' rods and 48-3/4' rods. (1900 Ft) Left one full rod looking-up Bodybreak. Bottom 6' of rods that came out were corkscrewed Picked up on Production string, showed 27000 lbs. EST. 4500'. Ran 1-1/4" Drill pipe in hole. Came out laying it back down.

(Over)

I hereby certify that the information above is true and complete to the best of my knowledge and belief.

SIGNATURE [Signature] TITLE Supervisor Reg/Proration DATE 1-28-92  
TYPE OR PRINT NAME L. M. Sanders (915) 368-1488  
TELEPHONE NO.

(This space for State Use)

ORIGINAL SIGNED BY JERRY SEXTON

APPROVED BY DISTRICT I SUPERVISOR

TITLE

DATE

CONDITIONS OF APPROVAL, IF ANY:

This Approval of Temporary  
Abandonment Expires 2-1-94

FEB 05 '92

1-06-92 COOH with 1-5/8" left-hand drill pipe and lay down. COOH with 85 jts. 2-7/8" tbg. and 107 jts. 2-3/8" tbg. Top of fish is at 6015'. GIH with overshot and 2-7/8" tbg. to 6015'.

1-07-92 COOH with 2-7/8" workstring and overshot. GIH with workstring, 1 jt. 5-1/2" washpipe, mill shoe and 3-1/6" overshot to catch collar 20' below top of fish. Caught collar at 6050'. Could not release lockset packer located at 6435'. Release overshot from collar, pull 2 stands.

1-08-92 COOH with workstring, washpipe, millshoe and overshot. GIH with tbg. and concave dressoff mill. Tag top of fish at 6050'. Mill approx. 1'. COOH with dressoff mill. GIH with lead block. Start in hole with 2-3/8" overshot on workstring.

1-09-92 GIH with 2-3/8" overshot. Caught top of fish at 6050'. GIH with 3/4" rod fishing tool and 7/8" and 1" rods. Caught top of rods at 6050'. Attempt to COOH with rods and pump. Pump would not unseat. Continue to jar on rods. Rods parted.

1-10-92 COOH with rods. Pin pulled out of 7/8" box at 3275'. GIH with rod overshot and 1-15/16" drill pipe. Caught rod box at 3275'. Back off rods below overshot. COOH with drillpipe and fish. Recovered 47-7/8" and 29-5/8" rods below bottom rod overshot. Top of rods now 7950' or 1464' below lockset packer.

1-13-92 Packer stuck at 6315'. Perforate 2 holes 6" above packer. Pump water down tbg. and attempt to unset packer. Would not unset. GIH with wireline chemical cut to 6335'. Cut tbg. below packer. COOH with workstring, 276' 2-3/8" tbg., and packer.

1-14-92 Caught tbg. at 6335'. Attempt to COOH with fish. Tbg. was stuck. GIH with lefthand drill pipe and rod overshot and attempt to catch and remove 5/8" rods from 7935' caught rods. Pump would not unseat. Back off rods. Start out of hole with drill pipe and rods.

1-15-92 Continue to COOH with lefthand drill pipe and fish. Retrieved 10 5/8" rods. Top of rods at 7685'.

1-16-92 GIH with drill pipe and overshot. COOH with DP and 11 5/8" Rods. Corrected top of rods 8450'. GIH with drill pipe to backoff.

1-17-92 COOH with drill pipe. Recovered 1-5/8" rod. Top of rods at 8475'. GIH with drill pipe to backoff rods. Backoff rods. COOH with Drill pipe. Recovered 47-5/8" rods. Top of rods now 9650'.

1-20-92 GIH with lefthand drillpipe. COOH with drill pipe and lay down.

1-21-92 Pipe stuck at 9656'. tbg. 100% free at 9600'. Cut tbg. Top tbg. left in hole is 9595'. Top of rods are located at 9650'. GIH with 7" gauge ring to 9595'.

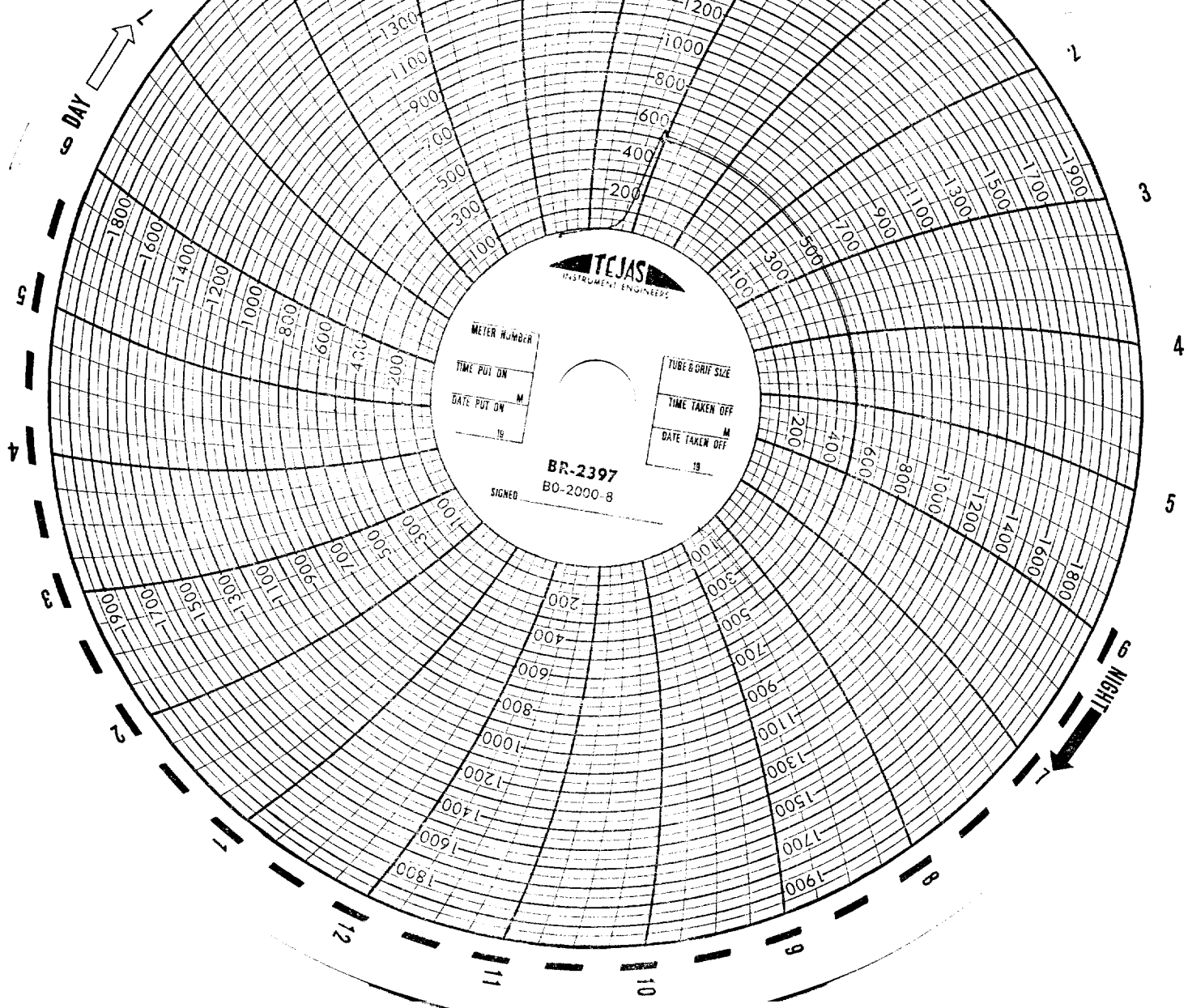
1-22-92 Set 7" packer at 6000'. Load annulus and pressure to 500#. Verify casing integrity. Pressure recorded on chart. Release packer. COOH with 2-7/8" workstring.

1-23-92 RIH w/7" CIBP. Set at 9694'. Dump 7 sxs. cement on CIBP. RIH with 7" CIBP. Set at 9140'. Dump 7 sxs. cement on CIBP. Shutin well. Status of well below CIBP - 1 jt mud anchor 2-3/8", packer at 9985'. 1 jt. 2-3/8", Sliding sleeve, SN, 10.5 jts. 2-3/8" tbg. 11-5/8" rods inside tbg. Tbg. stuck at 9658'. Top of tbg. at 9595'. Corrected PBTD of 7" casing at 9105'. Glorieta perms open located at 6030-6136'. Well Temporary Abandoned. This well will go into the proposed Glorieta West Unit operated by Texaco. Complete, Drop From Report.

RECEIVED

JAN 30 1992

PRINTED IN U.S.A.



Melipon

1/2 x 1/2

1/2 x 1/2

1/2 x 1/2

47-8

31-17.32

1000

1000

1