

NO. OF COPIES RECEIVED	
DISTRIBUTION	
SANTA FE	
FILE	
U.S.G.S.	
LAND OFFICE	
OPERATOR	

P. O. BOX 2088
SANTA FE, NEW MEXICO 875015A. Indicate Type of Lease
STATE ☒ REC ☐

5. State Oil & Gas Lease No.

B-1400

APPLICATION FOR PERMIT TO DRILL, DEEPEN, OR PLUG BACK

1a. Type of Work DRILL <input type="checkbox"/> DEEPEN <input type="checkbox"/> PLUG BACK <input checked="" type="checkbox"/>		7. Unit Agreement Name
b. Type of Well OIL WELL <input checked="" type="checkbox"/> GAS WELL <input type="checkbox"/> OTHER <input type="checkbox"/> SINGLE ZONE <input type="checkbox"/> MULTIPLE ZONE <input type="checkbox"/>		8. Farm or Lease Name STATE T
2. Name of Operator SHELL OIL COMPANY		9. Well No. 9
3. Address of Operator P. O. BOX 991, HOUSTON, TEXAS 77001		10. Field and Pool, or Wildcat VACUUM YATES
4. Location of Well UNIT LETTER I LOCATED 2310 FEET FROM THE SOUTH LINE AND 660 FEET FROM THE EAST LINE OF SEC. 33 TWP. 17-S RGE. 35-E NMPM		12. County LEA
19. Proposed Depth 6245'		19A. Formation YATES
20. Rotary or C.T. -----		21. Elevations (show whether DF, KT, etc.) 3938' GL
21A. Kind & Status Plug. Bond BLANKET		21B. Drilling Contractor -----
22. Approx. Date Work will start UPON APPROVAL		

23.

PROPOSED CASING AND CEMENT PROGRAM

SIZE OF HOLE	SIZE OF CASING	WEIGHT PER FOOT	SETTING DEPTH	SACKS OF CEMENT	EST. TOP
11"	8-5/8"	24#	1618'	575 SX	SURFACE
7-7/8"	5-1/2"	17#	6245'	950 SX	SURFACE

THIS WELLBORE IS PRESENTLY TEMPORARILY ABANDONED IN THE VACUUM GLORIETA POOL WITH A CIBP AT 5990' CAPPED WITH 35' OF CEMENT (3-20-82). WE NOW PROPOSE TO PLUG BACK AND RECOMPLETE TO THE VACUUM YATES POOL.

1. Set 5-1/2" CIBP @ 3240' and cap with 35' of cement.
2. Spot 150 gals of 15% NEA from 3000' to 3150'.
3. Perforate the Yates formation from top down 3043' to 3111'.
4. Acidize Yates perforations 3043' to 3111' with 5,000 gals 15% NEA.
5. Install production equipment and return well to production.

IN ABOVE SPACE DESCRIBE PROPOSED PROGRAM; IF PROPOSAL IS TO DEEPEN OR PLUG BACK, GIVE DATA ON PRESENT PRODUCTIVE ZONE AND PROPOSED NEW PRODUCTIVE ZONE. GIVE BLOWOUT PREVENTER PROGRAM, IF ANY.

I hereby certify that the information above is true and complete to the best of my knowledge and belief.

Signed A. J. FORE Title SUPERVISOR REG. & PERMITTING Date OCTOBER 25, 1983
(This space for State Use)

APPROVED BY ORIGINAL SIGNED BY JERRY SEXTON
CONDITIONS OF APPROVAL DISTRICT 1 SUPERVISOR

DATE

OCT 28 1983

RECEIVED
OCT 27 1983
O.C.D.
HOBBS OFFICE

NE MEXICO OIL CONSERVATION COMMISSIC
WELL LOCATION AND ACREAGE DEDICATION PLAT

Form C-102
Supersedes C-128
Effective 1-1-65

All distances must be from the outer boundaries of the Section.

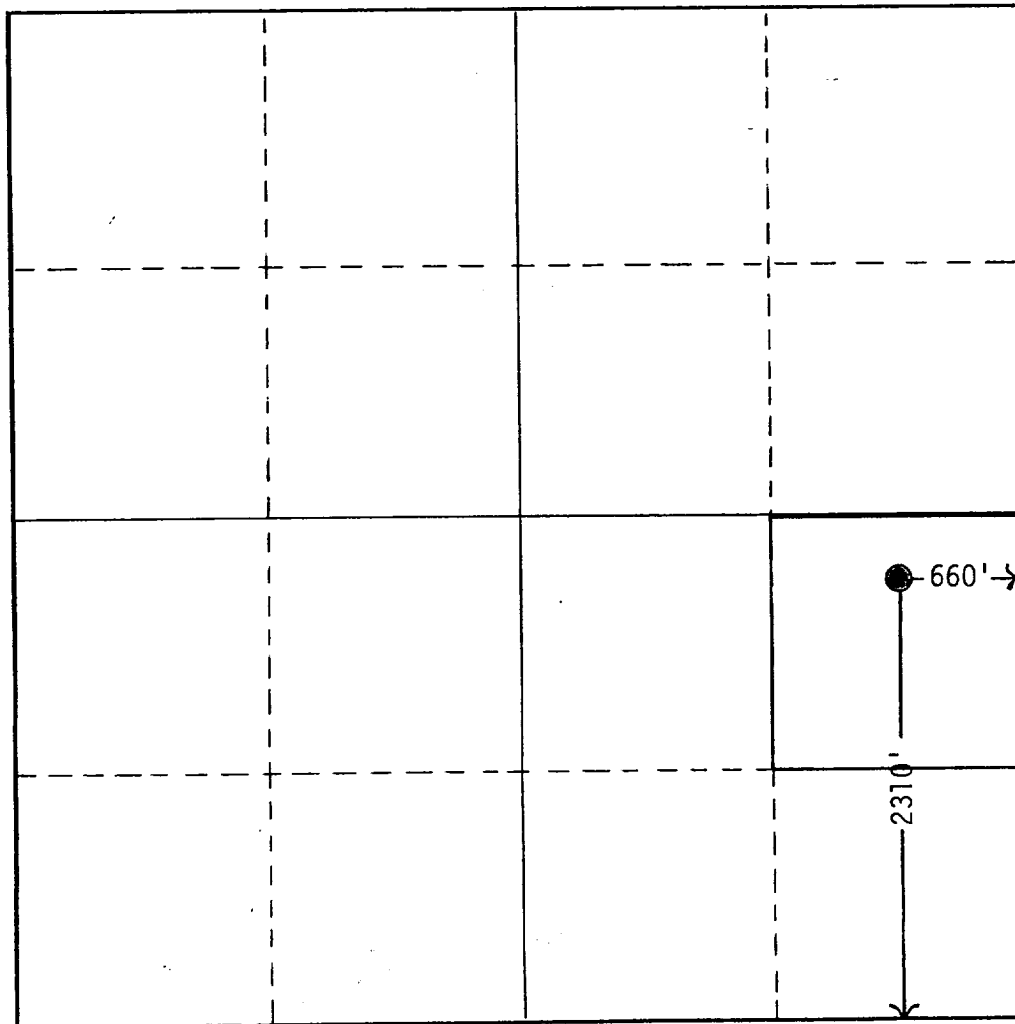
Operator SHELL OIL COMPANY			Lease STATE T		Well No. 9
Unit Letter I	Section 33	Township 17-S	Range 35-E	County LEA	
Actual Footage Location of Well: 2310 feet from the SOUTH line and 660 feet from the EAST line					
Ground Level Elev. 3938'	Producing Formation YATES		Pool VACUUM YATES		Dedicated Acreage: 40 Acres

1. Outline the acreage dedicated to the subject well by colored pencil or hachure marks on the plat below.
2. If more than one lease is dedicated to the well, outline each and identify the ownership thereof (both as to working interest and royalty).
3. If more than one lease of different ownership is dedicated to the well, have the interests of all owners been consolidated by communitization, unitization, force-pooling. etc?

☐ Yes ☐ No If answer is "yes," type of consolidation _____

If answer is "no," list the owners and tract descriptions which have actually been consolidated. (Use reverse side of this form if necessary.) _____

No allowable will be assigned to the well until all interests have been consolidated (by communitization, unitization, forced-pooling, or otherwise) or until a non-standard unit, eliminating such interests, has been approved by the Commission.



CERTIFICATION

I hereby certify that the information contained herein is true and complete to the best of my knowledge and belief.

Name **A. J. FORE**
Position **SUPERVISOR**
REGULATORY AND PERMITTING
Company **SHELL OIL COMPANY**
Date **OCTOBER 25, 1983**

I hereby certify that the well location shown on this plat was plotted from field notes of actual surveys made by me or under my supervision, and that the same is true and correct to the best of my knowledge and belief.

Date Surveyed

Registered Professional Engineer and/or Land Surveyor

Certificate No.

RECEIVED
OCT 27 1983
O.C.D.
HOBBS OFFICE