

DISTRICT I
P.O. Box 1980 Hobbs, NM 88241-1980
DISTRICT II
P.O. Box Drawer DD, Artesia, NM 88211-0719
DISTRICT III
1006 Rio Brazos Rd., Aztec, NM 87410
DISTRICT IV
P.O. Box 2088, Santa Fe, NM 87504-2088

State of New Mexico
Energy, Minerals and Natural Resources Department

Form C-101
Revised February 10, 1999
Instructions on back
Submit to Appropriate District Office
State Lease - 6 Copies
Fee Lease - 5 Copies

OIL CONSERVATION DIVISION

P.O. Box 2088
Santa Fe, New Mexico 87504-2088

AMENDED REPORT

APPLICATION FOR PERMIT TO DRILL, RE-ENTER, DEEPEN, PLUGBACK, OR ADD A ZONE

1 Operator Name and Address TEXACO EXPLORATION & PRODUCTION INC. 205 E. Bender, HOBBS, NM 88240		2 OGRID Number 022351
4 Property Code 11125	5 Property Name VACUUM GLORIETA WEST UNIT	3 API Number 3002520334
		6 Well No 131

7 Surface Location									
UI or lot no	Section	Township	Range	Lot Idn	Feet From The	North/South Line	Feet From The	East/West Line	County
C	36	17-S	34-E		660	NORTH	1880	WEST	LEA

8 Proposed Bottom Hole Location If Different From Surface

UI or lot no	Section	Township	Range	Lot Idn	Feet From The	North/South Line	Feet From The	East/West Line	County
9 Proposed Pool 1 Vacuum San Andres					10 Proposed Pool 2				

ONLY ONE

11 Work Type Code p	12 Well Type Code O	13 Rotary or C.T.	14 Lease Type Code S	15 Ground Level Elevation 4001' GR
16 Multiple No	17 Proposed Depth	18 Formation San Andres	19 Contractor	20 Spud Date 10/25/00

21 Proposed Casing and Cement Program

SIZE OF HOLE	SIZE OF CASING	WEIGHT PER FOOT	SETTING DEPTH	SACKS OF CEMENT	EST. TOP
NO CHANGE					

22 Describe the proposed program. If this application is to DEEPEN or PLUG BACK give the data on the present productive zone and proposed new productive zone.
Describe the blowout prevention program, if any. Use additional sheets if necessary.

Texaco intends to perforate & acidize the lower San Andres section in the subject well. The intended procedure is as follows:

- 1) MIRU SU. Pull tbg & rds. RIJ WL. Run gauge bar to 5900'. Set CIBP @ 5850' in West String. Dump 1 sx cmt. PBTD - 5815'. Set CIBP @ 5850' in East String. Dump 1 sx cmt PBTD - 5815. Test each plug to 4000 psig.
- 2) WEST STRING ONLY - run GR-CCL log fr 5000-5600'.
- 3) Perf Lower San Andres fr 5324-46, 5354-5400, 5450-5538. Test lines to 4000 psig. Acidize perms w/15000 gals 15% HCL NEFE dn csg. Displ w/2% KCL wtr. Flow Acid residue back.
- 4) Swab test perms. Record rate, fluid levels, and cut.
- 5) If productive, run pumping eqpt.

THE WELL NAME WILL BE CHANGED TO STATE BA #7

Permit Expires 1 Year From Approval
Date Unless Drilling Underway

Plug Back

23 I hereby certify that the rules and regulations of the Oil Conservation Division have been complied with and that the information given above is true and complete to the best of my knowledge and belief.

Signature

J. Denise Leake

Printed Name

J. Denise Leake

Title

Engineering Assistant

Date

10/9/00

Telephone

397-0405

OIL CONSERVATION DIVISION

Approved By:

Title:

Approval Date:

Expiration Date:

Conditions of Approval

Attached

DISTRICT I
P.O. Box 1980, Hobbs, NM 88241-1930
DISTRICT II
P.O. Box Drawer DD, Artesia, NM 88211-0719
DISTRICT III
1600 Rio Brazos Rd., Aztec, NM 87410
DISTRICT IV
P.O. Box 2088, Santa Fe, NM 87504-2088

State of New Mexico
Energy, Minerals and Natural Resources Department

Form C-102
Revised February 10, 1999
Instructions on back
Submit to Appropriate District Office
State Lease - 4 Copies
Fee Lease - 3 Copies
AMENDED REPORT

OIL CONSERVATION DIVISION

P.O. Box 2088
Santa Fe, New Mexico 87504-2088

WELL LOCATION AND ACREAGE DEDICATION PLAT

1 API Number 3002520334	2 Pool Code	3 Pool Name VACUUM SAN ANDRES <i>Grayburg</i>	4 Property Code 011125	5 Property Name VACUUM GLORIETA WEST UNIT	6 Well No. 131
7 OGRID Number 022351	8 Operator Name TEXACO EXPLORATION & PRODUCTION INC.	9 Elevation 4001' GR			

10 Surface Location

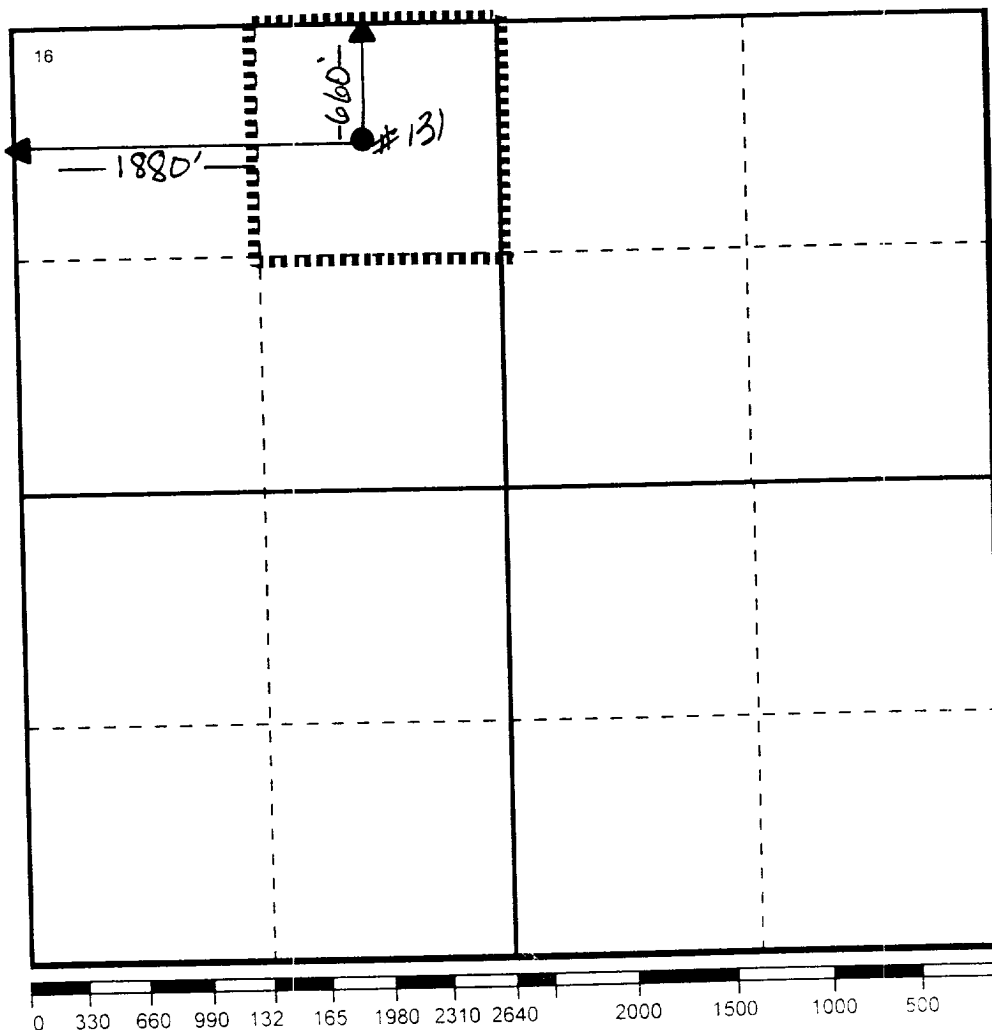
UI or lot no	Section	Township	Range	Lot Idn	Feet From The	North/South Line	Feet From The	East/West Line	County
C	36	17-S	34-E		660	NORTH	1880	WEST	LEA

11 Bottom Hole Location If Different From Surface

UI or lot no	Section	Township	Range	Lot Idn	Feet From The	North/South Line	Feet From The	East/West Line	County

12 Dedicated Acre 40	13 Joint or Infill No	14 Consolidation Code	15 Order No.
-------------------------	--------------------------	-----------------------	--------------

NO ALLOWABLE WILL BE ASSIGNED TO THIS COMPLETION UNTIL ALL INTERESTS HAVE BEEN CONSOLIDATED
OR A NON-STANDARD UNIT HAS BEEN APPROVED BY THE DIVISION



17 OPERATOR CERTIFICATION

I hereby certify that the information
contained herein is true and complete to the
best of my knowledge and belief

Signature

Printed Name

J. Denise Leake

Position
Engineering Assistant

Date
10/9/00

18 SURVEYOR CERTIFICATION

I hereby certify that the well location shown
on this plat was plotted from field notes of
actual surveys made by me or under my
supervision, and that the same is true and
correct to the best of my knowledge and
belief.

Date Surveyed

Signature & Seal of
Professional Surveyor

Certificate No.