

This form is not to
be used for reporting
packer leakage tests
in Northwest New Mexico

SOUTHEAST NEW MEXICO PACKER LEAKAGE TEST

Operator Getty Oil Company				Lease State BA		Well No. 7	
LOCATION OF WELL	Unit C	Sec. 36	Twp. 17S	Rge. 34E	County Lea		
NAME OF RESERVOIR OR POOL			TYPE OF PROD. (Oil or Gas)	METHOD OF PROD. FLOW, ART LIFT	PROD. MEDIUM (Tbg or Csg)		CHOKE SIZE
Upper Compl.	Vacuum Glorieta		Oil	Pump	Tubing		-
Lower Compl.	Vacuum Blinebry		Oil	Flow	Tubing		-

FLOW TEST NO. 1

Both zones shut-in at (hour, date): 8:30 A.M. 9/26/83

Well opened at (hour, date): 8:30 A.M. 9/27/83

	Upper Completion	Lower Completion
Indicate by (X) the zone producing		X
Pressure at beginning of test	106	22
Stabilized? (Yes or No)	Yes	Yes
Maximum pressure during test	106	22
Minimum pressure during test	101	12
Pressure at conclusion of test	101	12
Pressure change during test (Maximum minus Minimum)	5	10
Was pressure change an increase or a decrease?	Decrease	Decrease

Well closed at (hour, date): 8:30 A.M. 9/28/83

Oil Production During Test: - bbls; Grav. -; Total Time On Production 24 hours

Gas Production During Test: - MCF; GOR -

Remarks: Lower zone is dead.

FLOW TEST NO. 2

Well opened at (hour, date):	8:30 A.M.	9/29/83	Upper Completion	Lower Completion
Indicate by (X) the zone producing			X	
Pressure at beginning of test			98	15
Stabilized? (Yes or No)			Yes	Yes
Maximum pressure during test			98	15
Minimum pressure during test			26	15
Pressure at conclusion of test			26	15
Pressure change during test (Maximum minus Minimum)			72	0
Was pressure change an increase or a decrease?			Decrease	Neither
Well closed at (hour, date):	8:30 A.M.	9/30/83	Total Time On Production	24
Oil Production During Test:	2	bbls; Grav. 37°	Gas Production During Test	2.5 MCF; GOR 1250/1
Remarks:				

I hereby certify that the information herein contained is true and complete to the best of my knowledge.

Approved OCT 21 1983 19____
New Mexico Oil Conservation Division

By ORIGINAL SIGNED BY EDDIE SEAY
OIL & GAS INSPECTOR
Title _____

Operator Getty Oil Company
By [Signature]
Title Field Technician
Date 10/7/83

SOUTHEAST NEW MEXICO PACKER LEAKAGE TEST INSTRUCTIONS

1. A packer leakage test shall be commenced on each multiply completed well within seven days after actual completion of the well, and annually thereafter as prescribed by the order authorizing the multiple completion. Such tests shall also be commenced on all multiple completions within seven days following recompletion and/or chemical or fracture treatment, and whenever remedial work has been done on a well during which the packer or the tubing have been disturbed. Tests shall also be taken at any time that communication is suspected or when requested by the Division.
2. At least 72 hours prior to the commencement of any packer leakage test, the operator shall notify the Division in writing of the exact time the test is to be commenced. Offset operators shall also be so notified.
3. The packer leakage test shall commence when both zones of the dual completion are shut-in for pressure stabilization. Both zones shall remain shut-in until the well-head pressure in each has stabilized and for a minimum of two hours thereafter, provided however, that they need not remain shut-in more than 24 hours.
4. For Flow Test No. 1, one zone of the dual completion shall be produced at the normal rate of production while the other zone remains shut-in. Such test shall be continued until the flowing wellhead pressure has become stabilized and for a minimum of two hours thereafter, provided however, that the flow test need not continue for more than 24 hours.

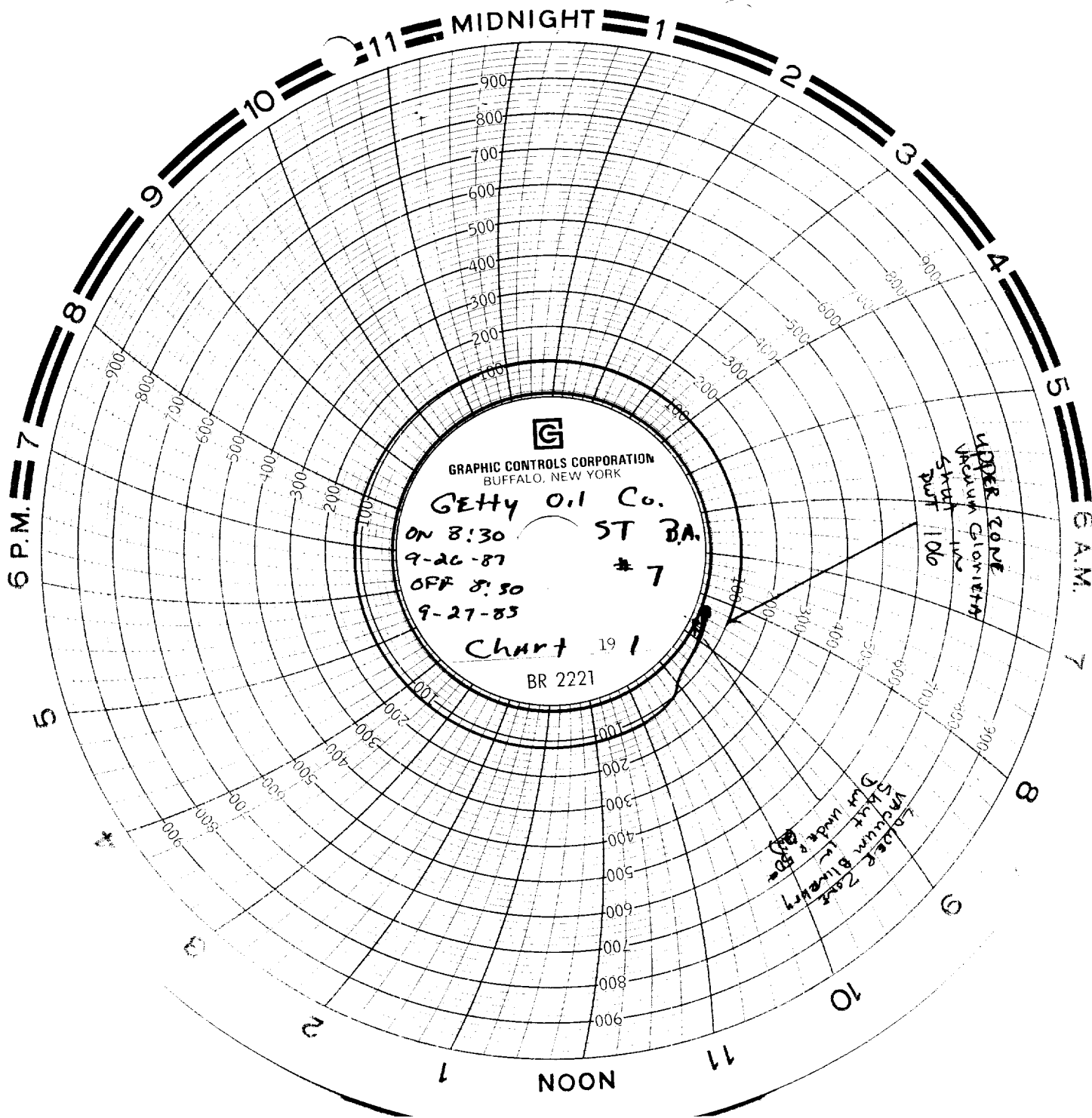
5. Following completion of Flow Test No. 1, the well shall again be shut-in, in accordance with Paragraph 3 above.

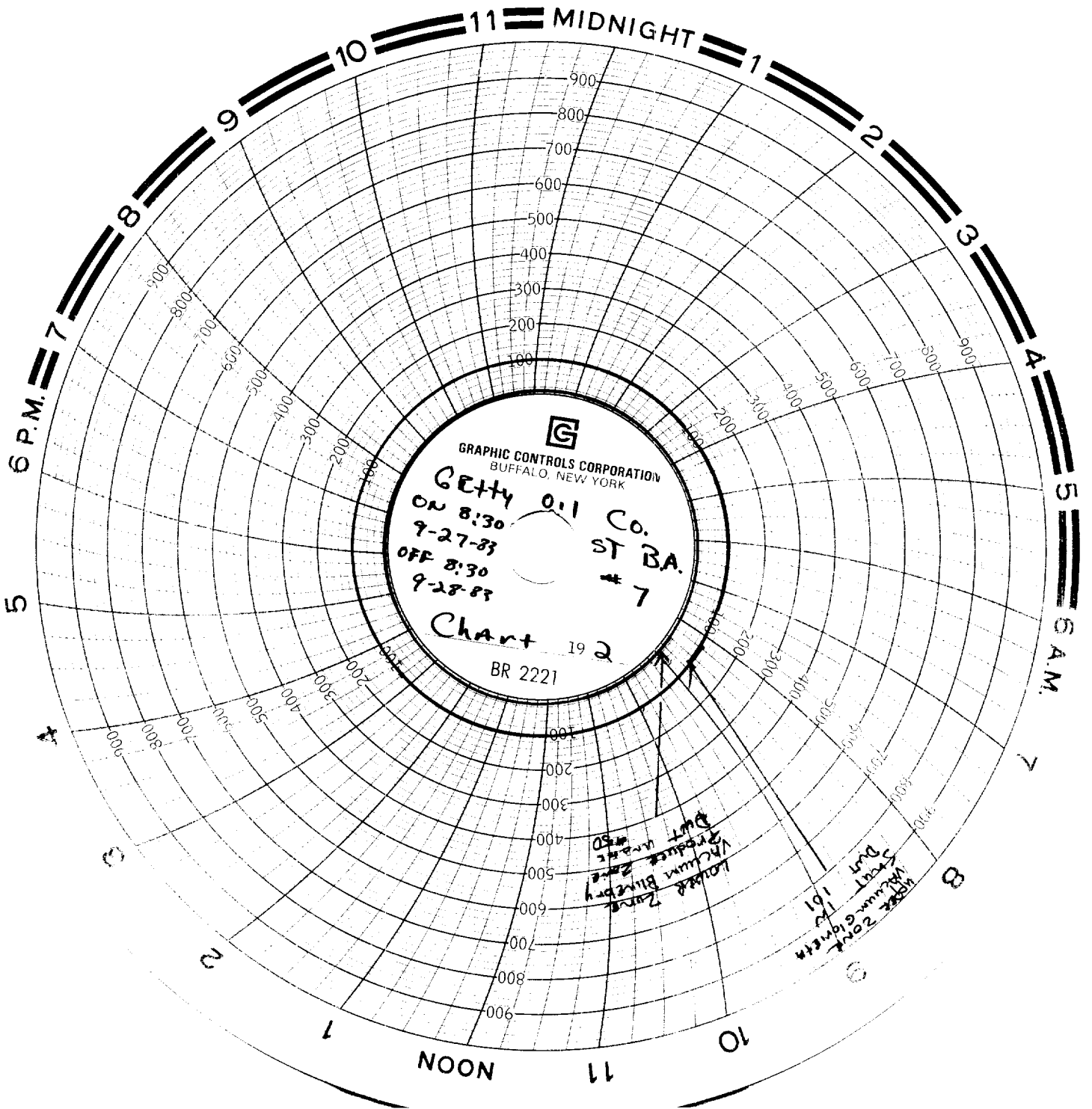
6. Flow Test No. 2 shall be conducted even though no leak was indicated during Flow Test No. 1. Procedure for Flow Test No. 2 is to be the same as for Flow Test No. 1 except that the previously produced zone shall remain shut-in while the previously shut-in zone is produced.

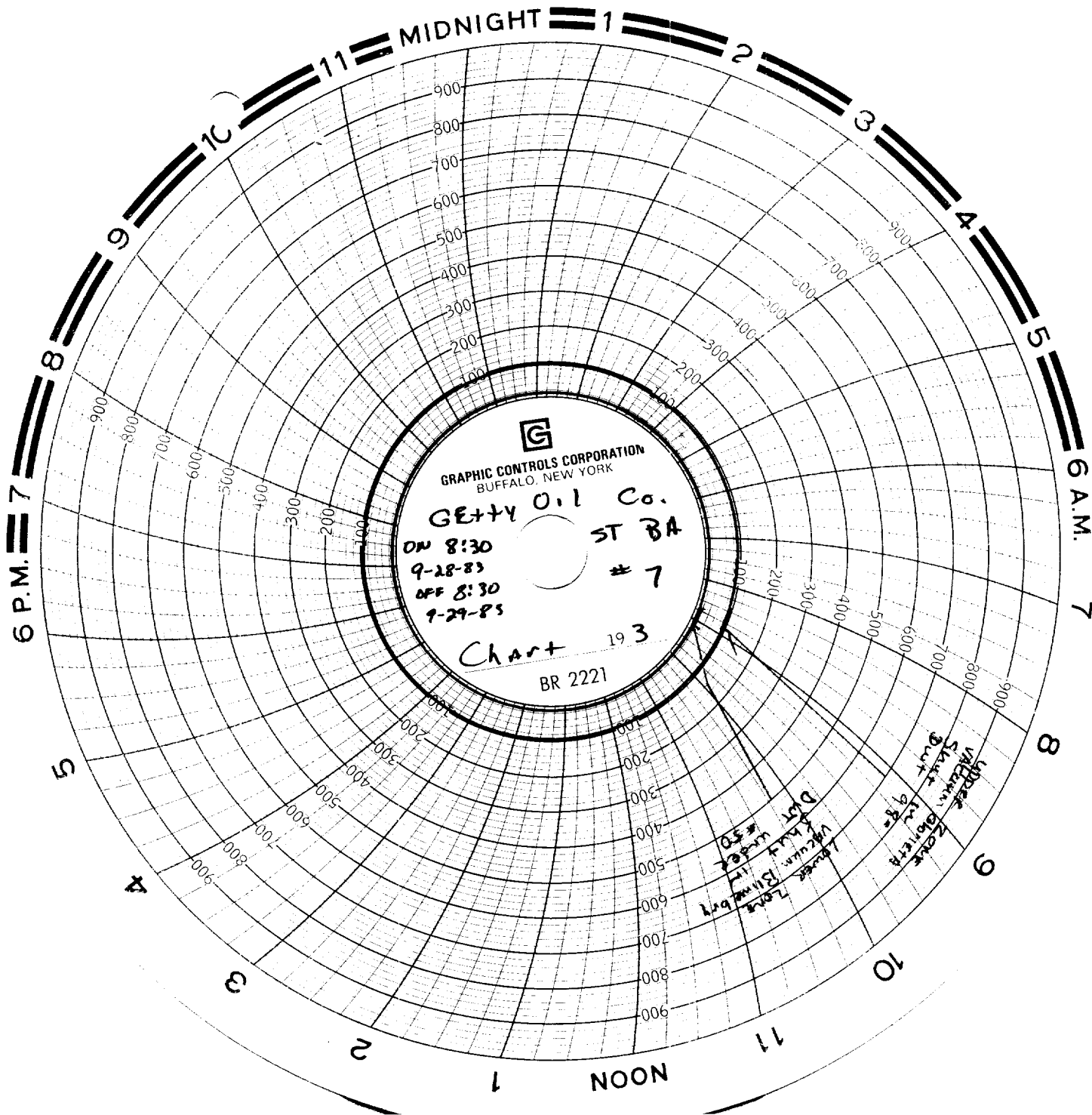
7. All pressures, throughout the entire test, shall be continuously measured and recorded with recording pressure gauges, the accuracy of which must be checked with deadweight tester at least twice, once at the beginning and once at the end, of each flow test.

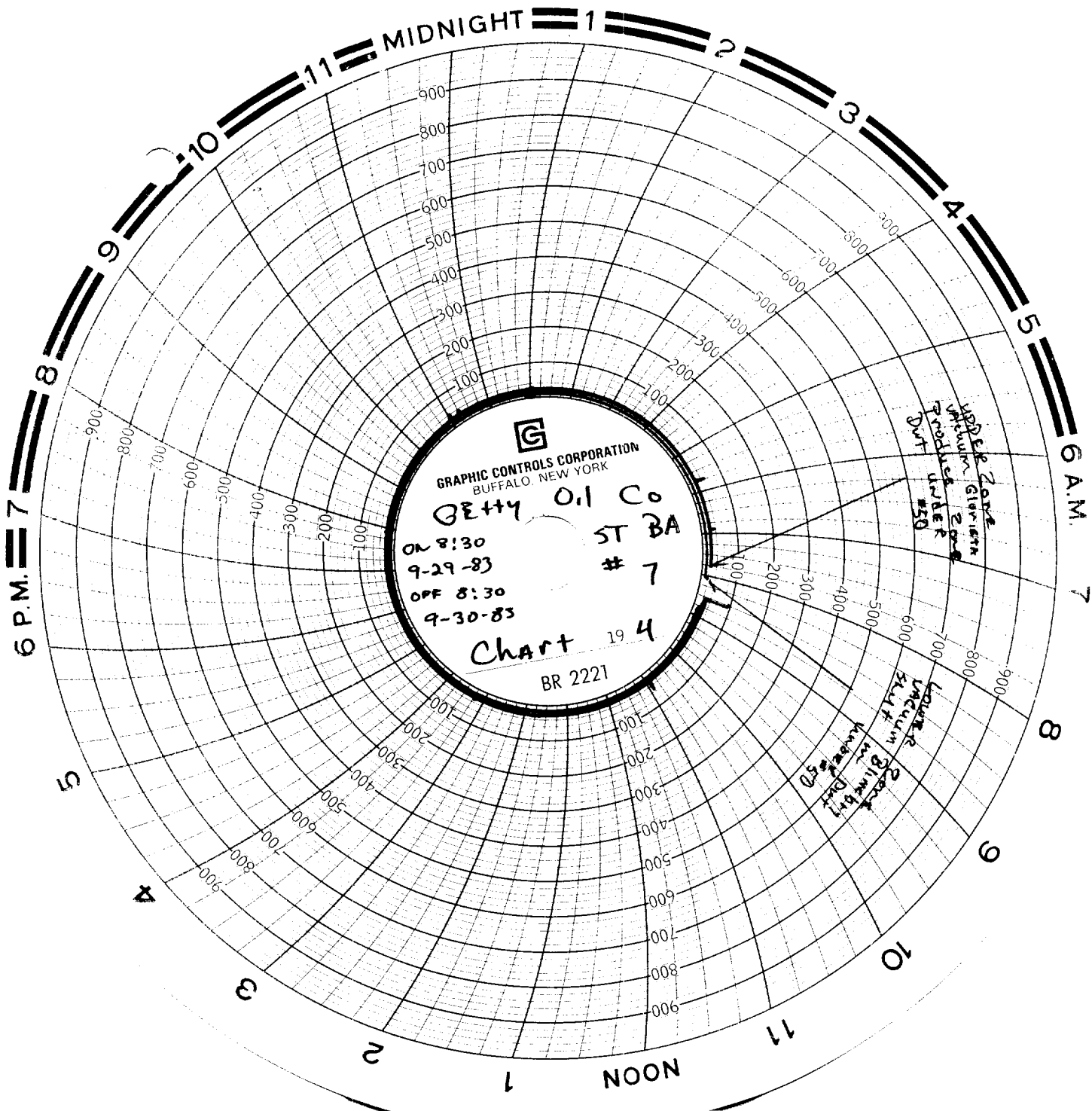
8. The results of the above-described tests shall be filed in triplicate within 15 days after completion of the test. Tests shall be filed with the appropriate District Office of the New Mexico Oil Conservation Division on Southeast New Mexico Packer Leakage Test Form Revised 11-01-58, together with the original pressure recording gauge charts with all the deadweight pressures which were taken indicated thereon. In lieu of filing the aforesaid charts, the operator may construct a pressure versus time curve for each zone of each test, indicating thereon all pressure changes which may be reflected by the gauge charts as well as all deadweight pressure readings which were taken. If the pressure curve is submitted, the original chart must be permanently filed in the operator's office. Form C-116 shall also accompany the Packer Leakage Test Form when the test period coincides with a gas-oil ratio test period.

RECEIVED
OCT 21 1983
DISTRICT OFFICE









GRAPHIC CONTROLS CORPORATION
BUFFALO, NEW YORK

GETTY OIL CO
ST BA
7

ON 8:30
9-29-83
OFF 8:30
9-30-83

Chart 19 4
BR 2221

Upper Zone
Medium Glare
Product
number
DWT #50

Lower
Medium
Glare
Product
number
DWT #50