

NUMBER OF COPIES RECEIVED	
DISTRIBUTION	
SANTA FE	
FILE	
U.S.G.S.	
LAND OFFICE	
TRANSPORTATION	
OPERATION OFFICE	
OPERATOR	

NEW MEXICO OIL CONSERVATION COMMISSION  
Santa Fe, New Mexico

Form G-101  
Revised (12/1/55)

HOBBS OFFICE O. C. C.

# NOTICE OF INTENTION TO DRILL

Nov 27 10 30 AM '63

Notice must be given to the District Office of the Oil Conservation Commission and approval obtained before drilling or recompletion begins. If changes in the proposed plan are considered advisable, a copy of this notice showing such changes will be returned to the sender. Submit this notice in QUINTUPPLICATE. One copy will be returned following approval. See additional instructions in Rules and Regulations of the Commission. If State Land submit 6 Copies Attach Form G-123 in triplicate to first 3 copies of form G-101

Hobbs, New Mexico  
(Place)

November 26, 1963  
(Date)

OIL CONSERVATION COMMISSION  
SANTA FE, NEW MEXICO

Gentlemen:

You are hereby notified that it is our intention to commence the Drilling of a well to be known as

Continental Oil Company

(Company or Operator)

State H-35

(Lessee)

Well No. 10

in G

(Unit)

The well is

located 1980 feet from the North line and 1780 feet from the East line of Section 35, T. 17S, R. 34E, NMPM.

(GIVE LOCATION FROM SECTION LINE) Vacuum Glorieta & Blinebry Lea County

If State Land the Oil and Gas Lease is No. B-3196

If patented land the owner is

Address

We propose to drill well with drilling equipment as follows: Rotary Tools

The status of plugging bond is Blanket

Drilling Contractor Not yet known

We intend to complete this well in the Glorieta and Blinebry formation at an approximate depth of 6750 feet.

## CASING PROGRAM

We propose to use the following strings of Casing and to cement them as indicated:

Size of Hole	Size of Casing	Weight per Foot	New or Second Hand	Depth	Sacks Cement
15"	10 3/4	32.75	New	1600	1,000*
9 7/8"	4 1/2	9.5 & 11.6	New	6750	275**
9 7/8"	2 7/8	6.5	New	6750	650***

If changes in the above plans become advisable we will notify you immediately

ADDITIONAL INFORMATION (If recompletion give full details of proposed plan of work.)

\*Cement is to circulate

\*\*Cement is to return to 5700'.

\*\*\*Cement is to return to 2500'.

Approved: \_\_\_\_\_, 19\_\_\_\_  
Except as follows:

Cement must be back/

OIL CONSERVATION COMMISSION

By \_\_\_\_\_

NMOCC (6) SLO ABS FILE

Sincerely yours,

Continental Oil Company  
(Company or Operator)

By \_\_\_\_\_  
Position Asst. Dist. Superintendent  
Send Communications regarding well to

Name Continental Oil Company

Address Box 460, Hobbs, New Mexico

**NEW MEXICO OIL CONSERVATION COMMISSION**  
**WELL LOCATION AND ACREAGE DEDICATION PLAT**

FORM C-128  
 Revised 3/1/57  
 Hobbs Office O.C.C.  
 Nov 27 10 30 AM '63

SEE INSTRUCTIONS FOR COMPLETING THIS FORM ON THE REVERSE SIDE

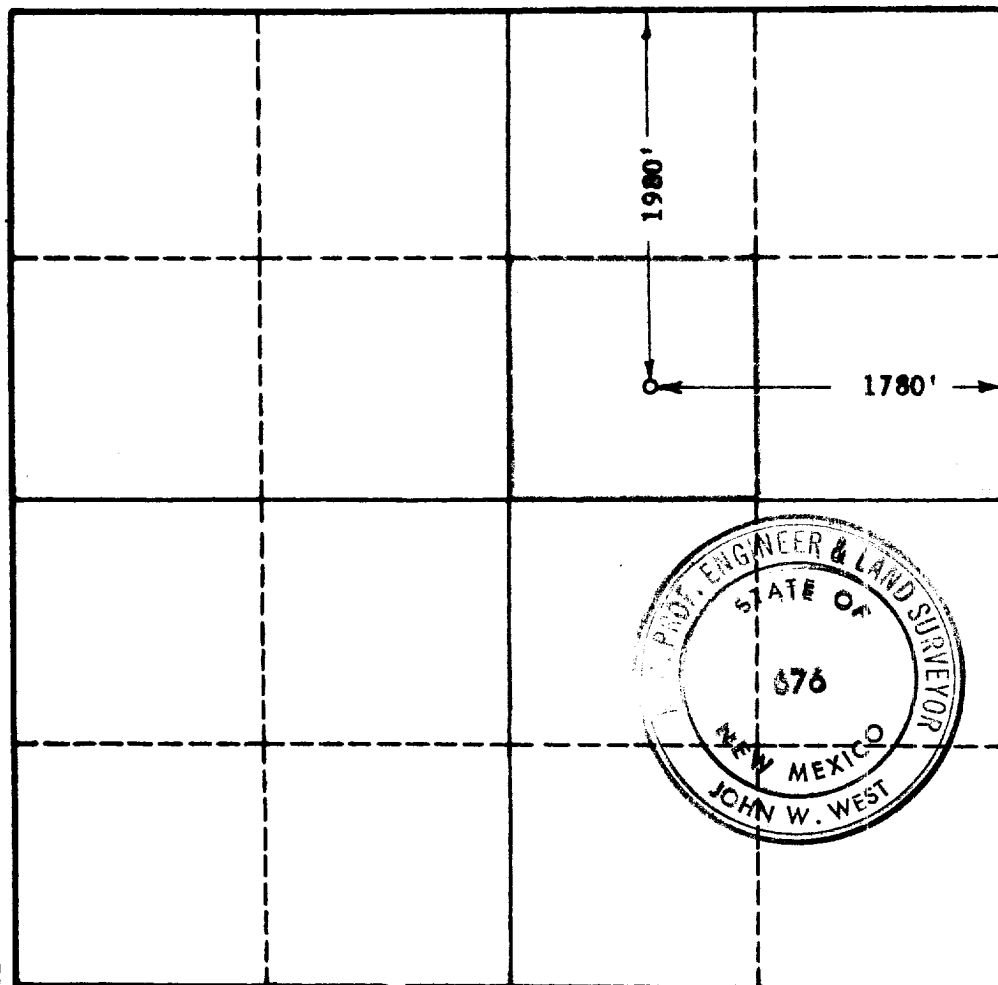
**SECTION A**

Operator <b>CONTINENTAL OIL COMPANY</b>			Lease <b>STATE H-35</b>		Well No. <b>10</b>
Unit Letter <b>G</b>	Section <b>35</b>	Township <b>17 SOUTH</b>	Range <b>34 EAST</b>	County <b>LEA</b>	
Actual Footage Location of Well: <b>1980</b> feet from the <b>NORTH</b> line and <b>1780</b> feet from the <b>EAST</b> line					
Ground Level Elev.	Producing Formation <b>Glorieta &amp; Blinebry</b>		Pool <b>Vacuum Glorieta and Blinebry</b>		Dedicated Acreage: <b>40</b> Acres

1. Is the Operator the only owner in the dedicated acreage outlined on the plat below? YES X NO \_\_\_\_ . ("Owner" means the person who has the right to drill into and to produce from any pool and to appropriate the production either for himself or for himself and another. (65-3-29 (e) NMSA 1955 Comp.)
2. If the answer to question one is "no," have the interests of all the owners been consolidated by communitization agreement or otherwise? YES \_\_\_\_ NO \_\_\_\_ . If answer is "yes," Type of Consolidation \_\_\_\_\_
3. If the answer to question two is "no," list all the owners and their respective interests below:

Owner	Land Description

**SECTION B**



**CERTIFICATION**

I hereby certify that the information in SECTION A above is true and complete to the best of my knowledge and belief.

Name John W. West  
 Position Asst. Dist. Supt.  
 Company Continental Oil Company  
 Date 11-26-63

I hereby certify that the well location shown on the plat in SECTION B was plotted from field notes of actual surveys made by me or under my supervision, and that the same is true and correct to the best of my knowledge and belief.

Date Surveyed  
**NOV. 23, 1963**  
 Registered Professional Engineer and/or Land Surveyor, **JOHN W. WEST**  
John W. West  
 Certificate No. 676  
 N. M. - P. E. & L. S. NO. 676

0 330 660 990 1320 1650 1980 2310 2640 2970 3300 3630 3960 4290 4620 4950 5280 5610 5940 6270 6600