

NEW MF CO OIL CONSERVATION COMMISSION
Santa Fe, New Mexico

Form C-101
Revised (12/1/55)

NOTICE OF INTENTION TO DRILL

Notice must be given to the District Office of the Oil Conservation Commission and approval obtained before drilling or recompletion begins. If changes in the proposed plan are considered advisable, a copy of this notice showing such changes will be returned to the sender. Submit this notice in QUINTUPPLICATE. One copy will be returned following approval. See additional instructions in Rules and Regulations of the Commission. If State Land submit 6 Copies Attach Form C-128 in triplicate to first 3 copies of form C-101

Roswell, New Mexico
(Place)

March 9, 1964
(Date)

OIL CONSERVATION COMMISSION
SANTA FE, NEW MEXICO

Gentlemen:

You are hereby notified that it is our intention to commence the Drilling of a well to be known as

FEATHERSTONE DEVELOPMENT CORPORATION

(Company or Operator)

SUN-STATE

(Lease)

Well No. 1, in E The well is

located 1980 feet from the North line and 660 feet from the

West

line of Section 19, T 17 South, R 36 East, NMPM.

(GIVE LOCATION FROM SECTION LINE)

Vacuum-Abo

Pool, Lea County

If State Land the Oil and Gas Lease is No. NM State B-2287 (SunLse# 24665)

If patented land the owner is

Address

We propose to drill well with drilling equipment as follows: Rotary Tools

The status of plugging bond is Featherstone Dev. Corp. maintains \$10,000 statewide blanket bond, Maryland Casualty Co. Bd # 90-885605

Drilling Contractor

Currently negotiation. Will advise by letter prior to spudding (See "Additional Information").

We intend to complete this well in the Abo Reef

formation at an approximate depth of 9000' TD feet.

CASING PROGRAM

We propose to use the following strings of Casing and to cement them as indicated:

Size of Hole	Size of Casing	Weight per Foot	New or Second Hand	Depth	Sacks Cement
17-1/2"	13-3/8"	48#	New	320'	250 (Circulated)
11"	8-5/8"	24# & 32#	New	3300'	200 Sx
7-7/8"	5-1/2"	15.5# & 17#	New	9000'	800 sx (tie in to Int.)

If changes in the above plans become advisable we will notify you immediately.

ADDITIONAL INFORMATION (If recompletion give full details of proposed plan of work.)

Featherstone Development Corporation committed to spud well on or before March 21, 1964.

Approved: _____, 19____
Except as follows:

OIL CONSERVATION COMMISSION

Engineer (Name)

Sincerely yours,

FEATHERSTONE DEVELOPMENT CORPORATION

(Company or Operator)

By Rex Alcorn

Position: Geologist

Send Communications regarding well to

Name: FEATHERSTONE DEVELOPMENT CORP.

Address: 236 Petroleum Bldg., Roswell, N.Mex.

NEW MEXICO OIL CONSERVATION COMMISSION
HOBBS OFFICE O. C. C.
WELL LOCATION AND ACREAGE DEDICATION PLAT

FORM C-128
Revised 5/1/57

SEE INSTRUCTIONS FOR COMPLETING THIS FORM ON THE REVERSE SIDE

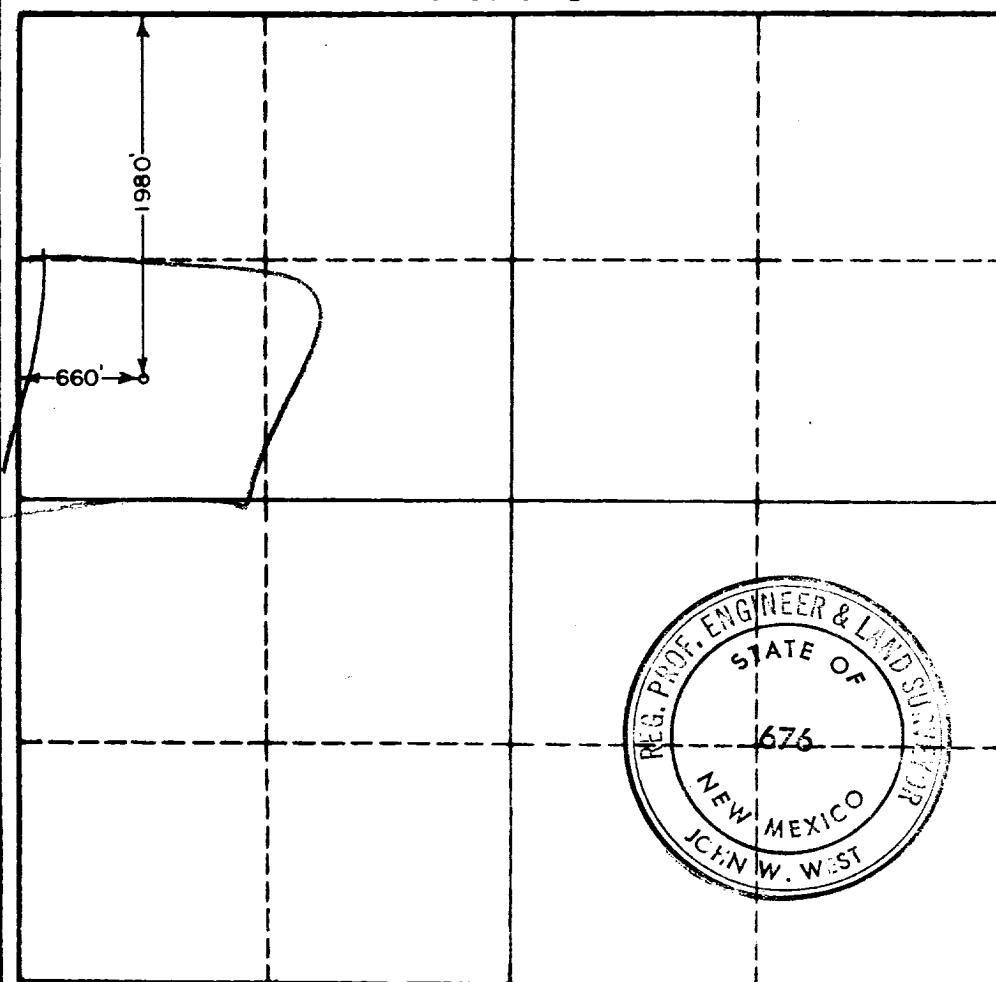
SECTION A

Operator FEATHERSTONE DEV. CORP.		Lease SUN-STATE		Well No. 1
Unit Letter E	Section 19	Township 17 SOUTH	Range 36 EAST	County LEA
Actual Footage Location of Well: 1980 feet from the NORTH line and 660 feet from the WEST line				
Ground Level Elev. 3895.3	Producing Formation <i>Alamo</i>		Pool	Dedicated Acreage: 27.31 Acres

1. Is the Operator the only owner in the dedicated acreage outlined on the plat below? YES ☒ NO ____ ("Owner" means the person who has the right to drill into and to produce from any pool and to appropriate the production either for himself or for himself and another. (65-3-29 (e) NMSA 1935 Comp.)
2. If the answer to question one is "no," have the interests of all the owners been consolidated by communitization agreement or otherwise? YES ____ NO ____ If answer is "yes," Type of Consolidation ____
3. If the answer to question two is "no," list all the owners and their respective interests below:

Owner	Land Description

SECTION B



CERTIFICATION

I hereby certify that the information in SECTION A above is true and complete to the best of my knowledge and belief.

Rev Alcorn
Name
Rev Alcorn
Position
Geologist
Company
Featherstone Dev. Corp.
Date
March 9, 1964

I hereby certify that the well location shown on the plat in SECTION B was plotted from field notes of actual surveys made by me or under my supervision, and that the same is true and correct to the best of my knowledge and belief.

Date Surveyed
MARCH 5, 1964
Registered Professional Engineer and/or Land Surveyor, **JOHN W. WEST**
John W. West
Certificate No.
N. M. - P. E. & L. S. NO. 676

0 330 660 990 1320 1650 1980 2310 2640 2000 1500 1000 500