

NUMBER OF COPIES RECEIVED	
DISTRIBUTION	
SANTA FE	
FILE	
U.S.G.S.	
LAND OFFICE	
TRANSPORTER	OIL
	GAS
PHORATION OFFICE	
OPERATOR	

NEW MEXICO OIL CONSERVATION COMMISSION
Santa Fe, New Mexico

Form C-101
Revised (12/1/55)

NOTICE OF INTENTION TO DRILL

Notice must be given to the District Office of the Oil Conservation Commission and approval obtained before drilling or recompletion begins. If changes in the proposed plan are considered advisable, a copy of this notice showing such changes will be returned to the sender. Submit this notice in QUINTUPPLICATE. One copy will be returned following approval. See additional instructions in Rules and Regulations of the Commission.

If State Land submit 6 Copies Attach Form C-128 in triplicate to first 3 copies of form C-101

Hobbs, New Mexico

September 15, 1964

(Place)

(Date)

OIL CONSERVATION COMMISSION
SANTA FE, NEW MEXICO

Gentlemen:

You are hereby notified that it is our intention to commence the Drilling of a well to be known as

Pan American Petroleum Corporation

(Company, or Operator)

State "CV"

(Lease)

Well No. **4**, in **L** (Unit) The well is

located **2310** feet from the **South** line and **380** feet from the

West

Line of Section **25**, T. **17-S**, R. **35-E**, NMPM.

(GIVE LOCATION FROM SECTION LINE)

Vacuum Abe Reef

Lea

County

If State Land the Oil and Gas Lease is No. **B-7428-2**

If patented land the owner is

Address

We propose to drill well with drilling equipment as follows: **O-TD W/rotary tools.**

The status of plugging bond is **Blanket bond on file with Commission**

Drilling Contractor **Marcum Drilling Co.**

Box 5094 - Midland, Texas

We intend to complete this well in the **Abe Reef**

formation at an approximate depth of **8800'** feet.

CASING PROGRAM

We propose to use the following strings of Casing and to cement them as indicated:

Size of Hole	Size of Casing	Weight per Foot	New or Second Hand	Depth	Sacks Cement
17-1/2"	13-3/8"	35.6#	New	350	Circulate
11"	8-5/8"	24-32#	"	3400	Base of Salt
7-7/8"	4-1/2"	9.5-11.6#	"	9200	600' above Abe Pay

If changes in the above plans become advisable we will notify you immediately

ADDITIONAL INFORMATION (If recompletion give full details of proposed plan of work.)

Approved: **Staley**, 19

Except as follows:

*** Casing must tie back**

OIL CONSERVATION COMMISSION

By

Sincerely yours,

Pan American Petroleum Corporation

(Company or Operator)

By **V. E. Staley**

Position **Area Superintendent**

Send Communications regarding well to

Name **V. E. Staley**

Address **Box 68 - Hobbs, New Mexico 88240**

NEW MEXICO OIL CONSERVATION COMMISSION
WELL LOCATION AND ACREAGE DEDICATION PLAT

FORM C-128
Revised 5/1/57

SEE INSTRUCTIONS FOR COMPLETING THIS FORM ON THE REVERSE SIDE

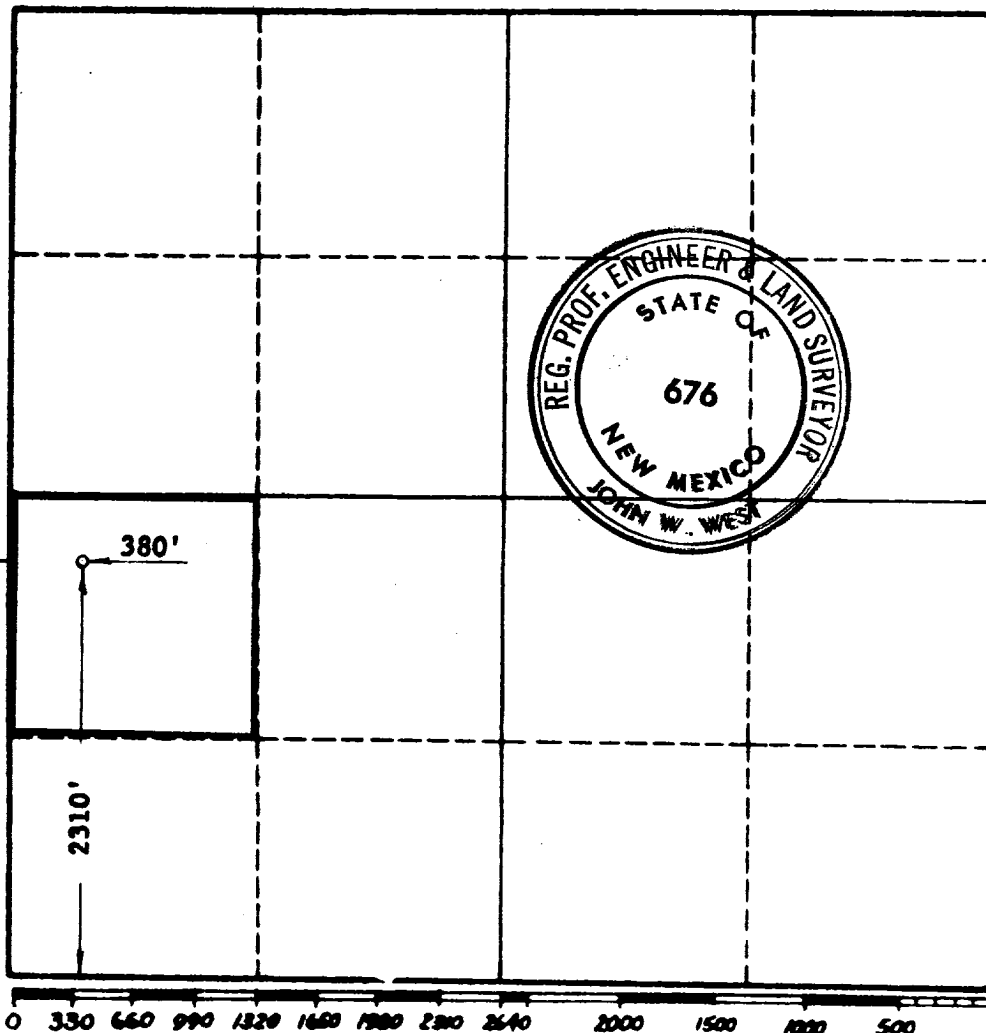
SECTION A

Operator PAN AMERICAN PETROLEUM CORP.			Lease STATE CV		Well No. 4
Unit Letter L	Section 25	Township 17 SOUTH	Range 35 EAST	County LEA	
Actual Footage Location of Well: 2310 feet from the SOUTH line and 380 feet from the WEST line					
Ground Level Elev.	Producing Formation Alto		Pool Vacuum Abo Reef		Dedicated Acreage: 40 Acres

1. Is the Operator the only owner in the dedicated acreage outlined on the plat below? YES ☒ NO ☐ ("Owner" means the person who has the right to drill into and to produce from any pool and to appropriate the production either for himself or for himself and another. (65-3-29 (e) NMSA 1935 Comp.)
2. If the answer to question one is "no," have the interests of all the owners been consolidated by communitization agreement or otherwise? YES ☐ NO ☐ If answer is "yes," Type of Consolidation _____
3. If the answer to question two is "no," list all the owners and their respective interests below:

Owner	Land Description

SECTION B



CERTIFICATION

I hereby certify that the information in SECTION A above is true and complete to the best of my knowledge and belief.

Name
Original Signed by
V. E. STALEY
Position
Area Superintendent
Company
Pan American Petroleum Corp.
Date
September 15, 1964

I hereby certify that the well location shown on the plat in SECTION B was plotted from field notes of actual surveys made by me or under my supervision, and that the same is true and correct to the best of my knowledge and belief.

Date Surveyed
9-12-1964
Registered Professional Engineer and/or Land Surveyor, **JOHN W. WEST**
John W. West
Certificate No.
N. M. - P. E. & L. S. NO. 676

Miss. Deane
8-7-80
by