

NUMBER OF COPIES RECEIVED	
DISTRIBUTION	
SANTA FE	
FILE	
U.S.G.S.	
LAND OFFICE	
TRANSPORTER	OIL GAS
PRODUCTION OFFICE	
OPERATOR	

NEW MEXICO OIL CONSERVATION COMMISSION  
Santa Fe, New Mexico

Form C-101  
Revised (12/1/55)

NOTICE OF INTENTION TO DRILL

Notice must be given to the District Office of the Oil Conservation Commission before drilling or recompletion begins. If changes in the proposed plan are considered advisable, a copy of this notice showing such changes will be returned to the sender. Submit this notice in QUINTUPPLICATE. One copy will be returned following approval. See additional instructions in Rules and Regulations of the Commission.

If State Land submit 6 Copies Attach Form C- 128 in triplicate to first 3 copies of form C-101

Roswell, New Mexico

(Place)

March 5, 1964

(Date)

OIL CONSERVATION COMMISSION  
SANTA FE, NEW MEXICO

Gentlemen:

You are hereby notified that it is our intention to commence the Drilling of a well to be known as

Shell Oil Company

(Company, or Operator)

State A

(Lease)

Well No. 7, in Unit B The well is

located 660 feet from the north line and 2180 feet from the east line of Section 31, T-17-S, R-35-E, NMPM.

(GIVE LOCATION FROM SECTION LINE) Vacuum Pool, Lea County

R-35-E

D	C	B	A
		X	
E	F	G	H
L	K	J	I
M	N	O	P

T  
17  
S

If State Land the Oil and Gas Lease is No. B-2354

If patented land the owner is

Address

We propose to drill well with drilling equipment as follows: rotary tools

The status of plugging bond is blanket

Drilling Contractor to be determined

We intend to complete this well in the Glorieta formation at an approximate depth of 6300' feet.

CASING PROGRAM

We propose to use the following strings of Casing and to cement them as indicated:

Size of Hole	Size of Casing	Weight per Foot	New or Second Hand	Depth	Sacks Cement
11"	8 5/8"	32#	New	1650'	600
7 7/8"	4 1/2"	9.5# & 11.6#	New	6300'	600

If changes in the above plans become advisable we will notify you immediately.

ADDITIONAL INFORMATION (If recompletion give full details of proposed plan of work.)

Approved \_\_\_\_\_, 19\_\_\_\_  
Except as follows:

Sincerely yours,

Shell Oil Company  
(Company or Operator)

Original Signed By

By R. A. LOWERY R. A. Lowery

Position District Exploitation Engineer  
Send Communications regarding well to

Name Shell Oil Company

Address P. O. Box 1250, Roswell, New Mexico 88207

OIL CONSERVATION COMMISSION

By \_\_\_\_\_

NEW MEXICO OIL CONSERVATION COMMISSION  
WELL LOCATION AND ACREAGE DEDICATION PLAT

FORM C-128  
HOBBS OFFICE  
MAR 9 9 06 AM '64  
O.C.C.

SEE INSTRUCTIONS FOR COMPLETING THIS FORM ON THE REVERSE SIDE

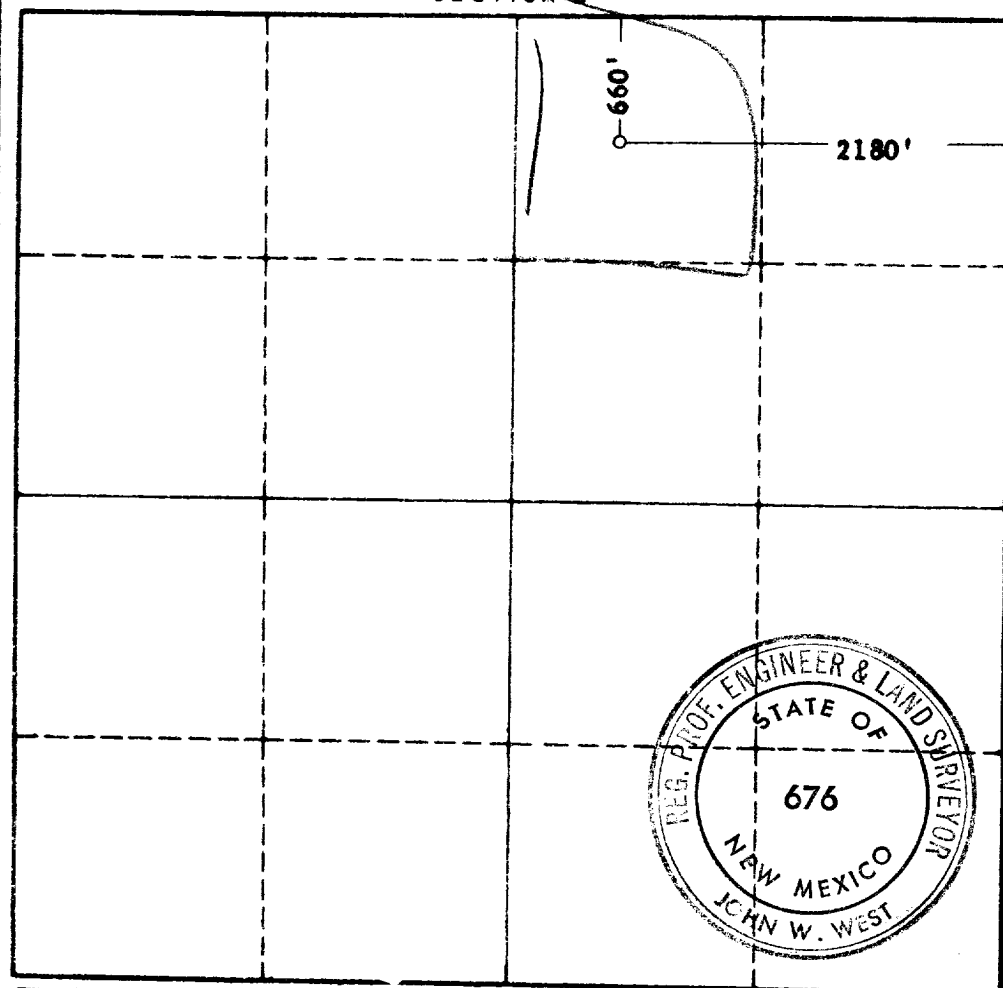
SECTION A

Operator SHELL OIL COMPANY		Lease STATE "A"		Well No. 7
Unit Letter B	Section 31	Township 17 SOUTH	Range 35 EAST	County LEA
Actual Footage Location of Well: 660 feet from the NORTH line and 2180 feet from the EAST line				
Ground Level Elev. not available	Producing Formation Glorieta	Pool Vacuum	Dedicated Acreage: 40 Acres	

1. Is the Operator the only owner in the dedicated acreage outlined on the plat below? YES ☒ NO \_\_\_\_ . ("Owner" means the person who has the right to drill into and to produce from any pool and to appropriate the production either for himself or for himself and another. (65-3-29 (e) NMSA 1935 Comp.)
2. If the answer to question one is "no," have the interests of all the owners been consolidated by communitization agreement or otherwise? YES \_\_\_\_ NO \_\_\_\_ . If answer is "yes," Type of Consolidation \_\_\_\_
3. If the answer to question two is "no," list all the owners and their respective interests below:

Owner	Land Description

SECTION B



CERTIFICATION

I hereby certify that the information in SECTION A above is true and complete to the best of my knowledge and belief.

Original Signed By

Name	R. A. LOWERY
Position	R. A. Lowery Dist. Exploitation Engr.
Company	Shell Oil Company
Date	MAR 5 1964

I hereby certify that the well location shown on the plat in SECTION B was plotted from field notes of actual surveys made by me or under my supervision, and that the same is true and correct to the best of my knowledge and belief.

Date Surveyed	MARCH 2, 1964
Registered Professional Engineer and/or Land Surveyor,	JOHN W. WEST
Certificate No.	N. M. - P. E. & L. S. NO. 676