

COPIES RECEIVED	
DISTRIBUTION	
SANTA FE	
FILE	
U.S.G.S.	
LAND OFFICE	
TRANSPORTER	OIL
	GAS
PRODUCTION OFFICE	
OPERATOR	

NEW MEXICO OIL CONSERVATION COMMISSION
Santa Fe, New Mexico

Form C-101
Revised (12/1/55)

NOTICE OF INTENTION TO DRILL

Notice must be given to the District Office of the Oil Conservation Commission and approval obtained before drilling or recompletion begins. If changes in the proposed plan are considered advisable, a copy of this notice showing such changes will be returned to the sender. Submit this notice in QUINTUPPLICATE. One copy will be returned following approval. See additional instructions in Rules and Regulations of the Commission. If State Land submit 6 Copies Attach Form C-128 in triplicate to first 3 copies of form C-101

Roswell, New Mexico

June 22, 1964

(Place)

(Date)

OIL CONSERVATION COMMISSION
SANTA FE, NEW MEXICO

Gentlemen:

You are hereby notified that it is our intention to commence the Drilling of a well to be known as

Shell Oil Company

(Company, or Operator)

State N

(Lease)

Well No. 5

II

(Unit)

The well is

located 23.0 feet from the North line and 330 feet from the East

Line of Section 28, T 17N, R 35E, NMPM.

(GIVE LOCATION FROM SECTION LINE)

Vacuum-Glorieta Pool, Le. County

R-35-E

If State Land the Oil and Gas Lease is No. B-1423

If patented land the owner is

Address

We propose to drill well with drilling equipment as follows: Rotary Tools

The status of plugging bond is Blanket

Drilling Contractor untermore

We intend to complete this well in the Glorieta formation at an approximate depth of 6250 feet.

CASING PROGRAM

We propose to use the following strings of Casing and to cement them as indicated:

Size of Hole	Size of Casing	Weight per Foot	New or Second Hand	Depth	Sacks Cement
11"	8 5/8"	32#	New	1620'	600
7 7/8"	4 1/2"	9.5# & 11.6#	New	6250'	600

If changes in the above plans become advisable we will notify you immediately.

ADDITIONAL INFORMATION (If recompletion give full details of proposed plan of work.)

Approved....., 19.....
Except as follows:

Sincerely yours,

Shell Oil Company
(Company or Operator)

By Original Signed By R. A. Lowery
R. A. LOWERY

Position District Exploration Engineer
Send Communications regarding well to

Name Shell Oil Company

Address P. O. Box 1870, Roswell, New Mexico

OIL CONSERVATION COMMISSION

By.....

NUMBER OF COPIES RECEIVED	
DISTRIBUTION	
SANTA FE	
FILE	
U.S.G.S.	
LAND OFFICE	
TRANSPORTER	OIL
	GAS
PRODUCTION OFFICE	
OPERATOR	

NEW MEXICO OIL CONSERVATION COMMISSION
WELL LOCATION AND ACREAGE DEDICATION PLAT
 SEE INSTRUCTIONS FOR COMPLETING THIS FORM ON THE REVERSE SIDE

FORM C-128
 Revised 5/1/57

JUN 23 10 31 AM '64

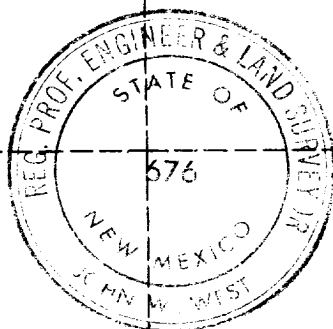
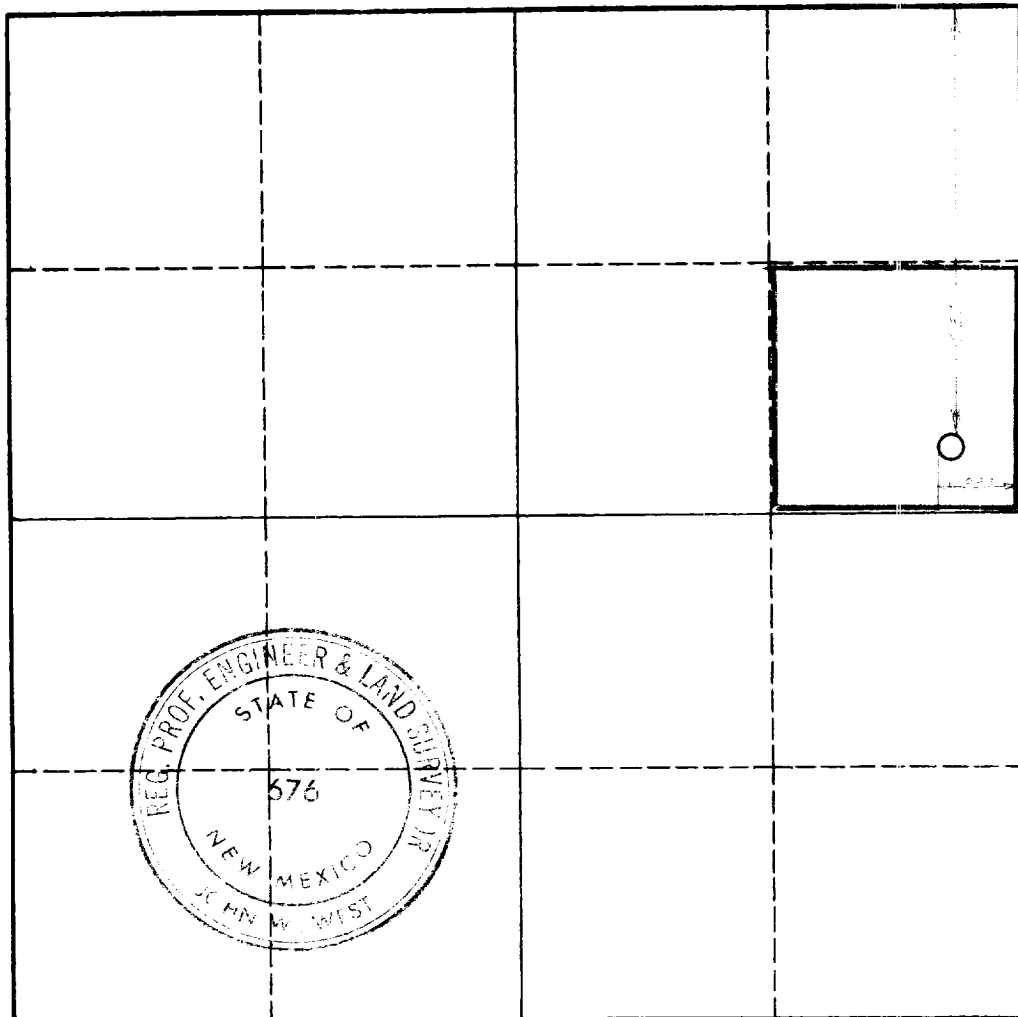
SECTION A

Operator Shell Oil Company			Lease State N		Well No. 5
Unit Letter H	Section 28	Township 17S	Range 35E	County Lea	
Actual Footage Location of Well: 2310 feet from the north line and 330 feet from the east line					
Ground Level Elev. not available	Producing Formation Glorieta		Pool Vacuum-Glorieta		Dedicated Acreage: 40 Acres

1. Is the Operator the only owner in the dedicated acreage outlined on the plat below? YES ☒ NO ____ . ("Owner" means the person who has the right to drill into and to produce from any pool and to appropriate the production either for himself or for himself and another. (65-3-29 (e) NMSA 1935 Comp.)
2. If the answer to question one is "no," have the interests of all the owners been consolidated by communitization agreement or otherwise? YES ____ NO ____ . If answer is "yes," Type of Consolidation ____
3. If the answer to question two is "no," list all the owners and their respective interests below:

Owner	Land Description

SECTION B



CERTIFICATION

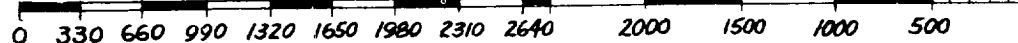
I hereby certify that the information in SECTION A above is true and complete to the best of my knowledge and belief.

Name Original Signed By
R. A. LOWERY
 Position **R. A. Lowery**
District Exploitation Engr.
 Company
Shell Oil Company
 Date **JUN 22 1964**

I hereby certify that the well location shown on the plat in SECTION B was plotted from field notes of actual surveys made by me or under my supervision, and that the same is true and correct to the best of my knowledge and belief.

Date Surveyed
6-16-64
 Registered Professional Engineer
 and/or Land Surveyor

John M. West
 Certificate No. **176**



INSTRUCTIONS FOR COMPLETION OF FORM C-128

1. Operator shall furnish and certify to the information called for in Section A.
2. Operator shall outline the dedicated acreage for *both* oil and gas wells on the plat in Section B.
3. A registered professional engineer or land surveyor registered in the State of New Mexico or approved by the Commission shall show on the plat the location of the well and certify this information in the space provided.
4. All distances shown on the plat must be from the outer boundaries of the Section.
5. If additional space is needed for listing owners and their respective interests as required in question 3 of Section A, please use space below.