

NUMBER OF COPIES RECEIVED	
DISTRIBUTION	
SANTA FE	
FILE	
U.S.G.S.	
LAND OFFICE	
TRANSPORTER	OIL GAS
PROGATION OFFICE	
OPERATOR	

NEW MEXICO OIL CONSERVATION COMMISSION
Santa Fe, New Mexico

Form C-101
Revised (12/1/55)

HOBBES OFFICE O. C. C.

NOTICE OF INTENTION TO DRILL

Notice must be given to the District Office of the Oil Conservation Commission and approval obtained before drilling or recompletion begins. If changes in the proposed plan are considered advisable, a copy of this notice showing such changes will be returned to the sender. Submit this notice in QUINTUPLICATE. One copy will be returned following approval. See additional instructions in Rules and Regulations of the Commission. If State Land submit 6 Copies Attach Form C- 128 in triplicate to first 3 copies of form C-101

Hobbs, New Mexico

June 29, 1964

(Place)

(Date)

OIL CONSERVATION COMMISSION
SANTA FE, NEW MEXICO

Gentlemen:

You are hereby notified that it is our intention to commence the Drilling of a well to be known as

Skelly Oil Company

(Company, or Operator)

State **nm**

(Lease)

, Well No. **4**, in **nm** (Unit) The well is

located **810** feet from the **North** line and **660** feet from the

West

line of Section **33**, T. **17-S**, R. **35-E**, NMPM.

(GIVE LOCATION FROM SECTION LINE)

Undesignated Pool, **Los** County

If State Land the Oil and Gas Lease is No. **B-1334**

If patented land the owner is **—**

Address **—**

We propose to drill well with drilling equipment as follows: **To be drilled with Rotary Tools from surface to Total Depth.**

The status of plugging bond is **Blanket Bond No. 1253688 for \$100,000.00 with Federal Insurance Co.**

Drilling Contractor **Not selected**

We intend to complete this well in the **Glorieta** formation at an approximate depth of **6300'** feet.

CASING PROGRAM

We propose to use the following strings of Casing and to cement them as indicated:

Size of Hole	Size of Casing	Weight per Foot	New or Second Hand	Depth	Sacks Cement
11"	8-5/8"	24#	New	1550'	600
7-7/8"	4-1/2"	10.5#	New	6300'	900

If changes in the above plans become advisable we will notify you immediately.

ADDITIONAL INFORMATION (If recompletion give full details of proposed plan of work.)

The Pump & Plug Process will be used in cementing all strings of casing and cement will be circulated to surface on the 8-5/8" OD casing. Cement will be circulated to approx. 2800' on the 4-1/2" OD casing. The 4-1/2" OD casing will be set at approx. 6300'. The 4-1/2" OD casing will be perforated & treated with approx. 500 gals. acid.

Approved **JUN 30 1964**, 19.....
Except as follows:

Sincerely yours,

Skelly Oil Company

(Company or Operator)

By **(ORIGINAL) H. E. Aab**

Position **Dist. Superintendent**

Send Communications regarding well to

Name **Skelly Oil Company**

Address **Box 730 - Hobbs, New Mexico**

OIL CONSERVATION COMMISSION

By **J. D. James**

NEW MEXICO OIL CONSERVATION COMMISSION
WELL LOCATION AND ACREAGE DEDICATION PLAT

HOBBS OFFICE NO. 6-128
Revised 3/7/57
JUN 30 10 13 AM '64

SEE INSTRUCTIONS FOR COMPLETING THIS FORM ON THE REVERSE SIDE

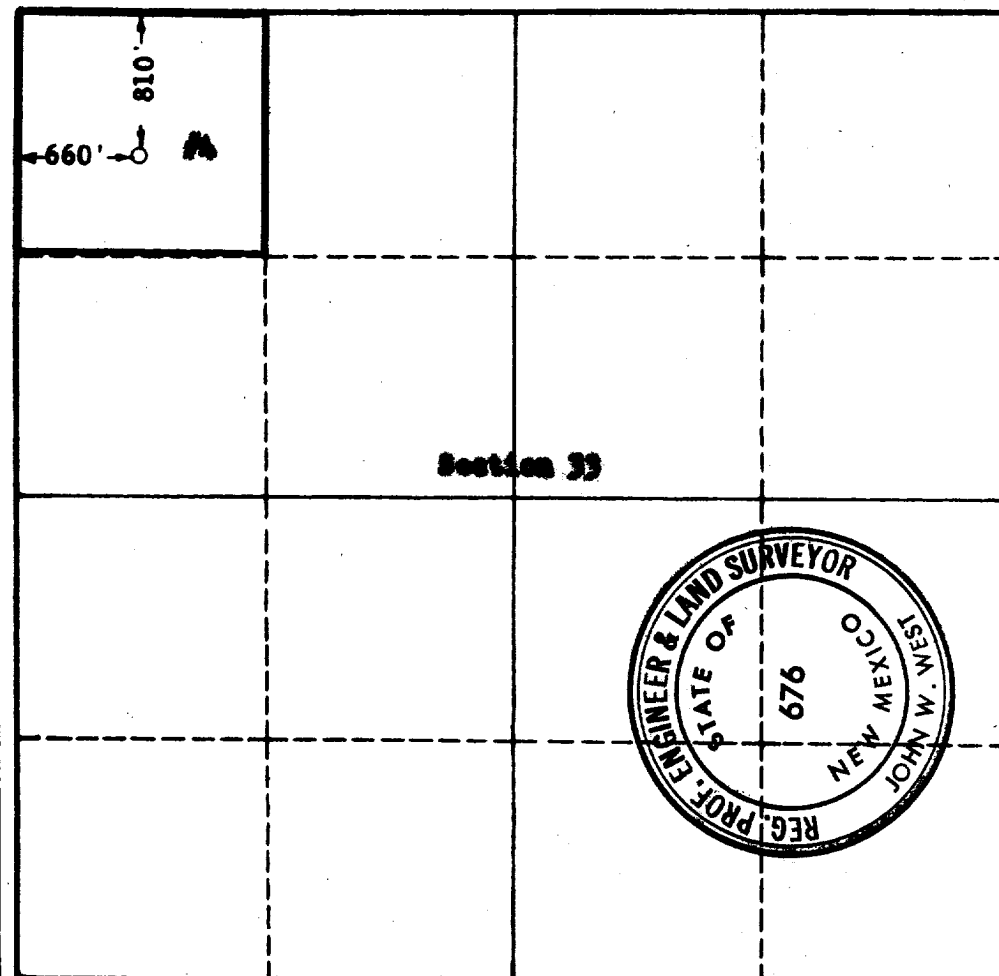
SECTION A

Operator SKELLY OIL COMPANY			Lease STATE P		Well No. 4
Unit Letter D	Section 33	Township 17 SOUTH	Range 35 EAST	County LEA	
Actual Footage Location of Well: 810 feet from the NORTH line and 660 feet from the WEST line					
Ground Level Elev.	Producing Formation Clarieta		Pool Undesignated	Dedicated Acreage: 40 Acres	

1. Is the Operator the only owner in the dedicated acreage outlined on the plat below? YES ☒ NO ☐ ("Owner" means the person who has the right to drill into and to produce from any pool and to appropriate the production either for himself or for himself and another. (65-3-29 (e) NMSA 1935 Comp.)
2. If the answer to question one is "no," have the interests of all the owners been consolidated by communization agreement or otherwise? YES ☐ NO ☐ If answer is "yes," Type of Consolidation _____
3. If the answer to question two is "no," list all the owners and their respective interests below:

Owner	Land Description

SECTION B



CERTIFICATION

I hereby certify that the information in SECTION A above is true and complete to the best of my knowledge and belief.

Name (ORIGINAL SIGNED) **H. E. Ash**
Position **Dist. Supt.**
Company **Skelly Oil Company**
Date **June 27, 1964**

I hereby certify that the well location shown on the plat in SECTION B was plotted from field notes of actual surveys made by me or under my supervision, and that the same is true and correct to the best of my knowledge and belief.

Date Surveyed **JUNE 27, 1964**
Registered Professional Engineer and/or Land Surveyor, **JOHN W. WEST**
Certificate No. **John W. West**
N. M. - P. E. & L. S. NO. 676

0 330 660 990 1320 1650 1980 2310 2640 2970 3300 3630 3960 4290 4620 4950