

NEW XICO OIL CONSERVATION COMMISSION
SOUTHEAST NEW MEXICO PACKER LEAKAGE TEST

3-INMOCC

Operator GETTY OIL COMPANY				Lease STATE "BA"			Well No. 8
Location of Well	Unit B	Sec 36	Twp 17-S	Rge 34-E	County LEA		
Name of Reservoir or Pool			Type of Prod (Oil or Gas)	Method of Prod Flow, Art Lift	Prod. Medium (Tbg or Csg)	Choke Size	
Upper Compl	VACUUM ABC, NORTH		OIL	PUMP	TUBING		
Middle Compl	VACUUM WOLF CANY		OIL	FLOW	TUBING	20/64	
Lower Compl	VACUUM UPPER PENN		OIL	FLOW	TUBING	24/64	

FLOW TEST NO. 1

All zones shut-in at (hour, date): 11:00 A.M., 8-5-73
Well opened at (hour, date): 11:00 A.M., 8-6-73
Indicate by (X) the zone producing.....
Pressure at beginning of test.....
Stabilized? (Yes or No).....
Maximum pressure during test.....
Minimum pressure during test.....
Pressure at conclusion of test.....
Pressure change during test (Maximum minus Minimum).....
Was pressure change an increase or a decrease?.....
Total Time on Production
Upper Completion
Middle Completion
Lower Completion
XXXX
600
400
YES
600
400
0
600
0
0
NO CHANGE
NO CHANGE
DECREASE
24 HOURS
Oil Production
Gas Production
During Test: 41 bbls; Grav. 42.1; During Test 232 MCF; GOR 7,122
Remarks

FLOW TEST NO. 2

Well opened at (hour, date): 11:00 A.M., 8-8-73
Indicate by (X) the zone producing.....
Pressure at beginning of test.....
Stabilized? (Yes or No).....
Maximum pressure during test.....
Minimum pressure during test.....
Pressure at conclusion of test.....
Pressure change during test (Maximum minus Minimum).....
Was pressure change an increase or a decrease?.....
Total Time on Production
Upper Completion
Middle Completion
Lower Completion
XXXX
650
425
YES
650
425
100
425
100
425
550
0
NO CHANGE
DECREASE
NO CHANGE
24 HOURS
Well closed at (hour, date): 11:00 A.M. 8-9-73
Oil Production
Gas Production
During Test 16 bbls; Grav. 40.5; During Test 416 MCF; GOR 26,000
Remarks

FLOW TEST NO. 3

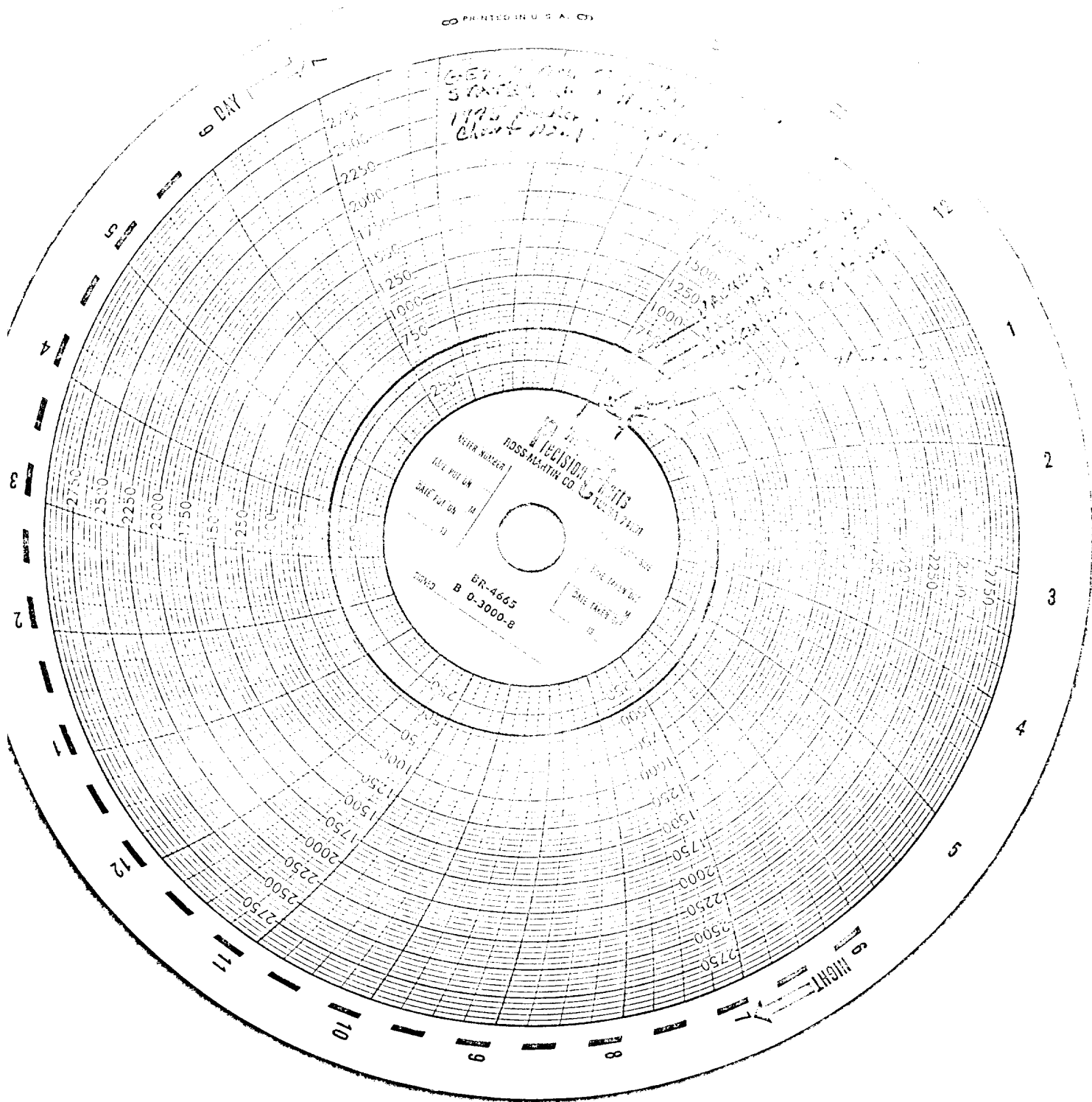
Well opened at (hour, date): 11:00 A.M., 8-10-73
Indicate by (X) the zone producing.....
Pressure at beginning of test.....
Stabilized? (Yes or No).....
Maximum pressure during test.....
Minimum pressure during test.....
Pressure at conclusion of test.....
Pressure change during test (Maximum minus Minimum).....
Was pressure change an increase or a decrease?.....
Total Time on Production
Upper Completion
Middle Completion
Lower Completion
XXXX
600
375
YES
600
375
600
350
600
350
0
25
NO CHANGE
NO CHANGE
DECREASE
24 HOURS
Well closed at (hour, date): 11:00 A.M., 8-11-73
Oil Production
Gas Production
During Test 19 bbls; Grav. 40.2; During Test 35 MCF; GOR 1,842
Remarks

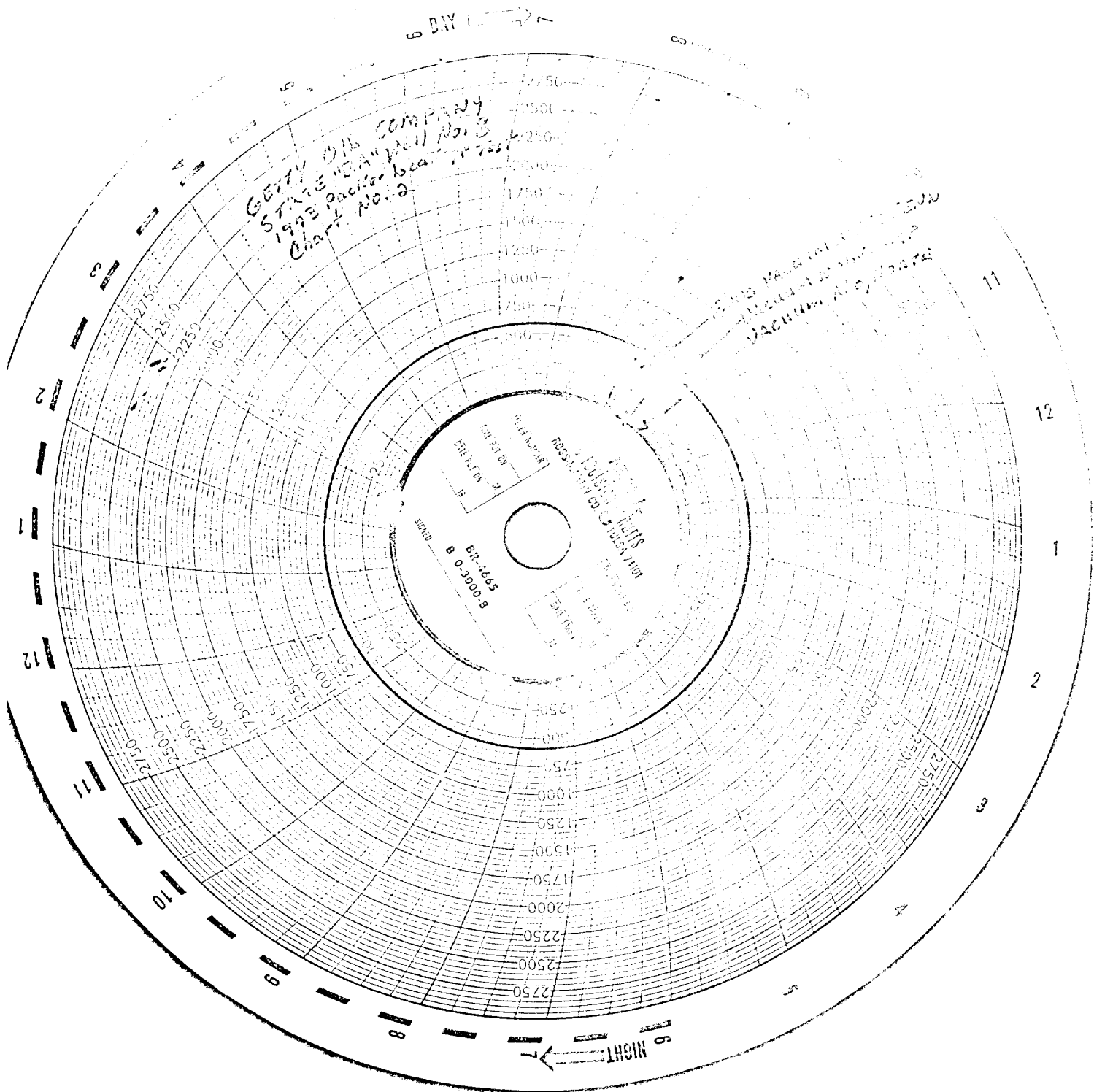
I hereby certify that the information herein contained is true and complete to the best of my knowledge.

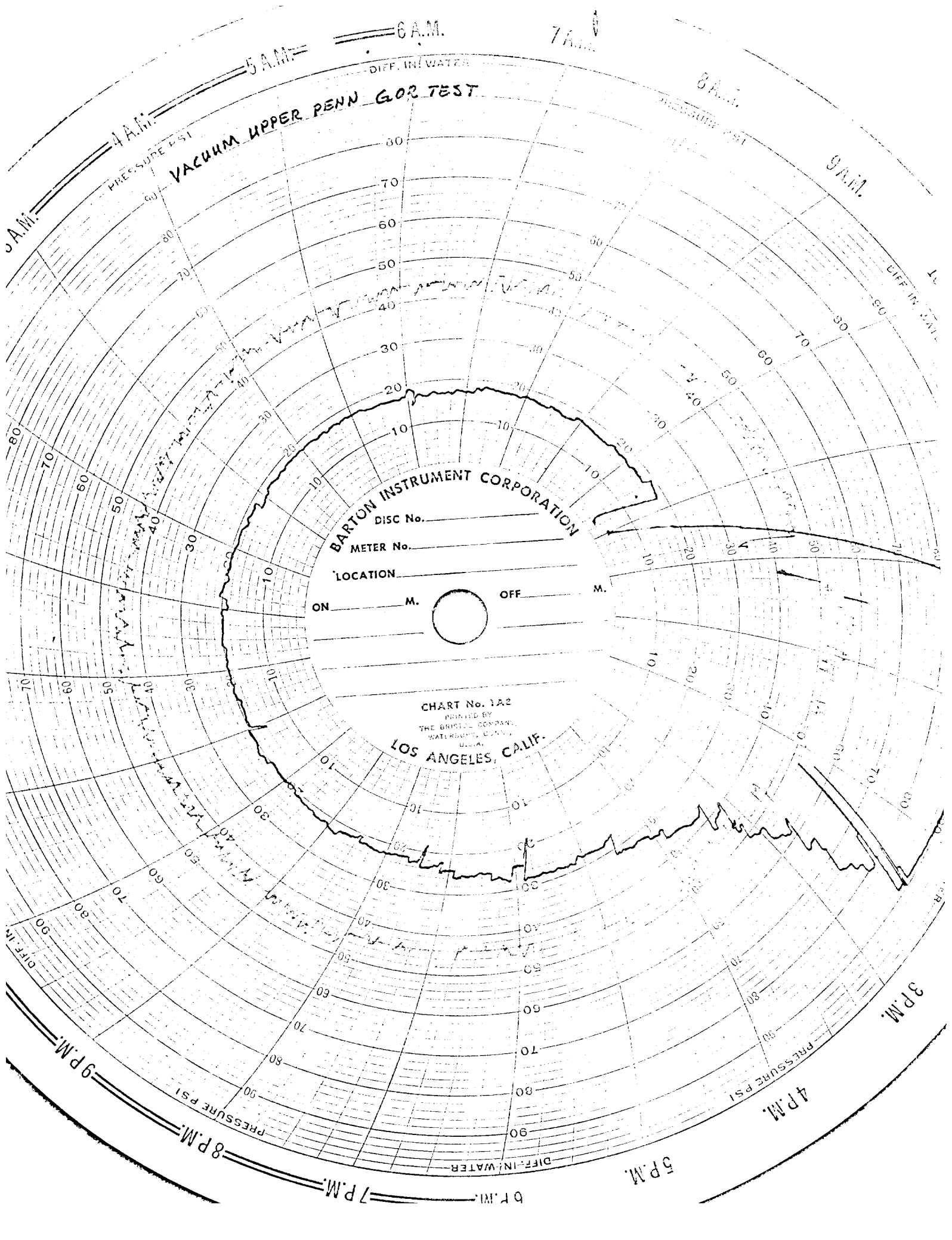
Approved 19 nm
New Mexico Oil Conservation Commission
By Joe D. Ramsey
Title Executive Secretary

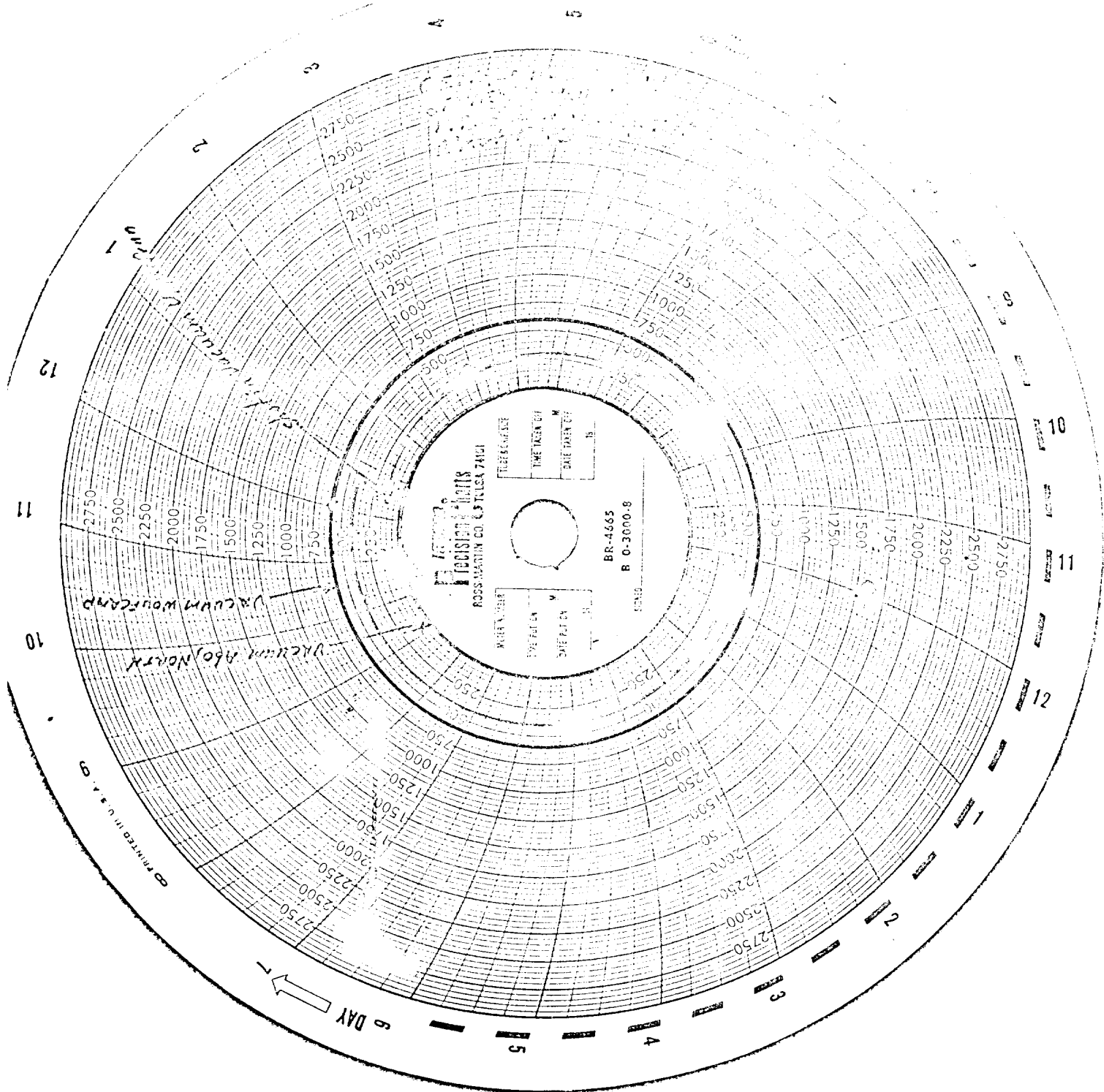
Operator GETTY OIL COMPANY
By C. L. Wade
Title AREA SUPERINTENDENT
Date OCTOBER 2, 1973

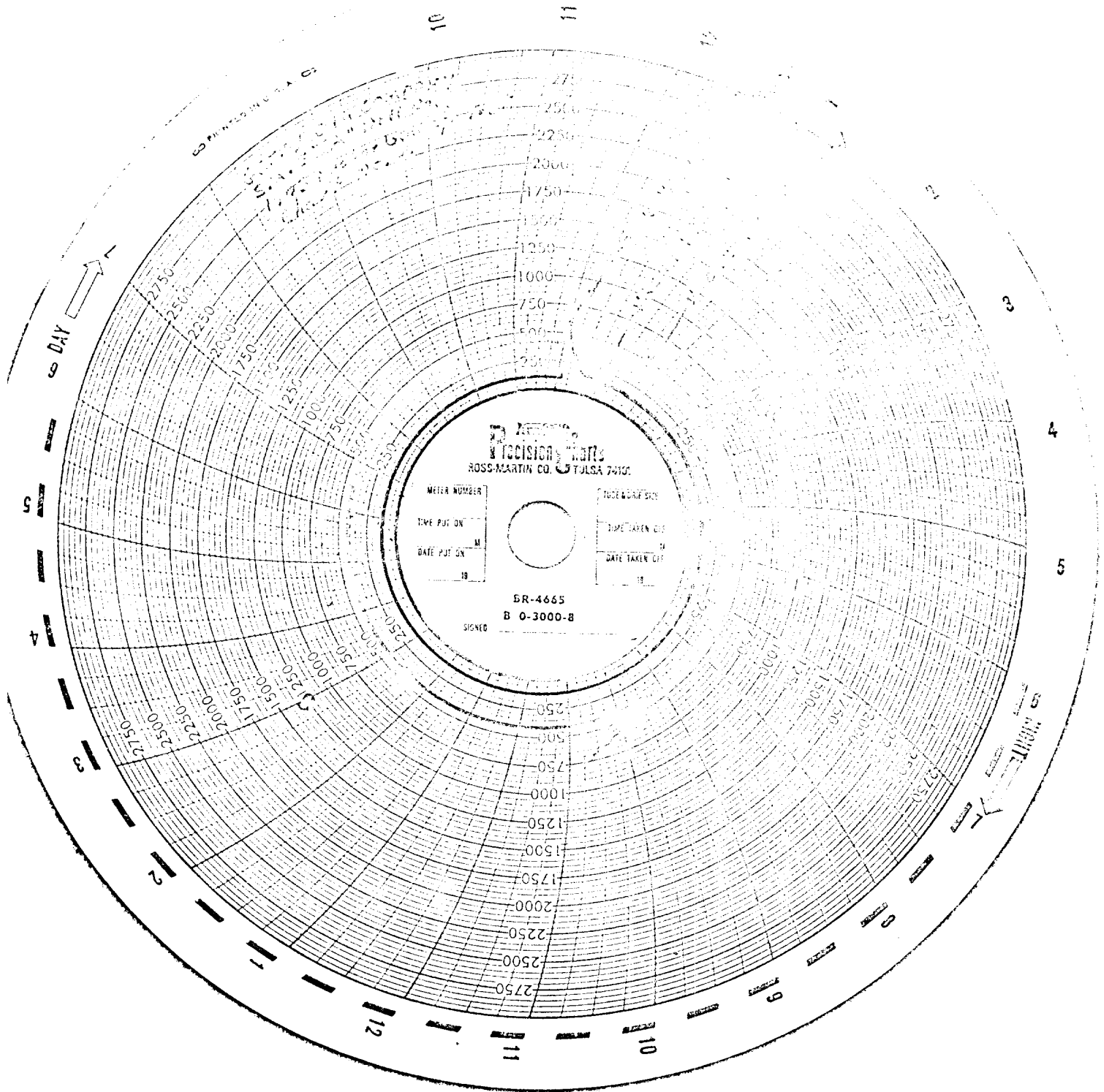
Ivory

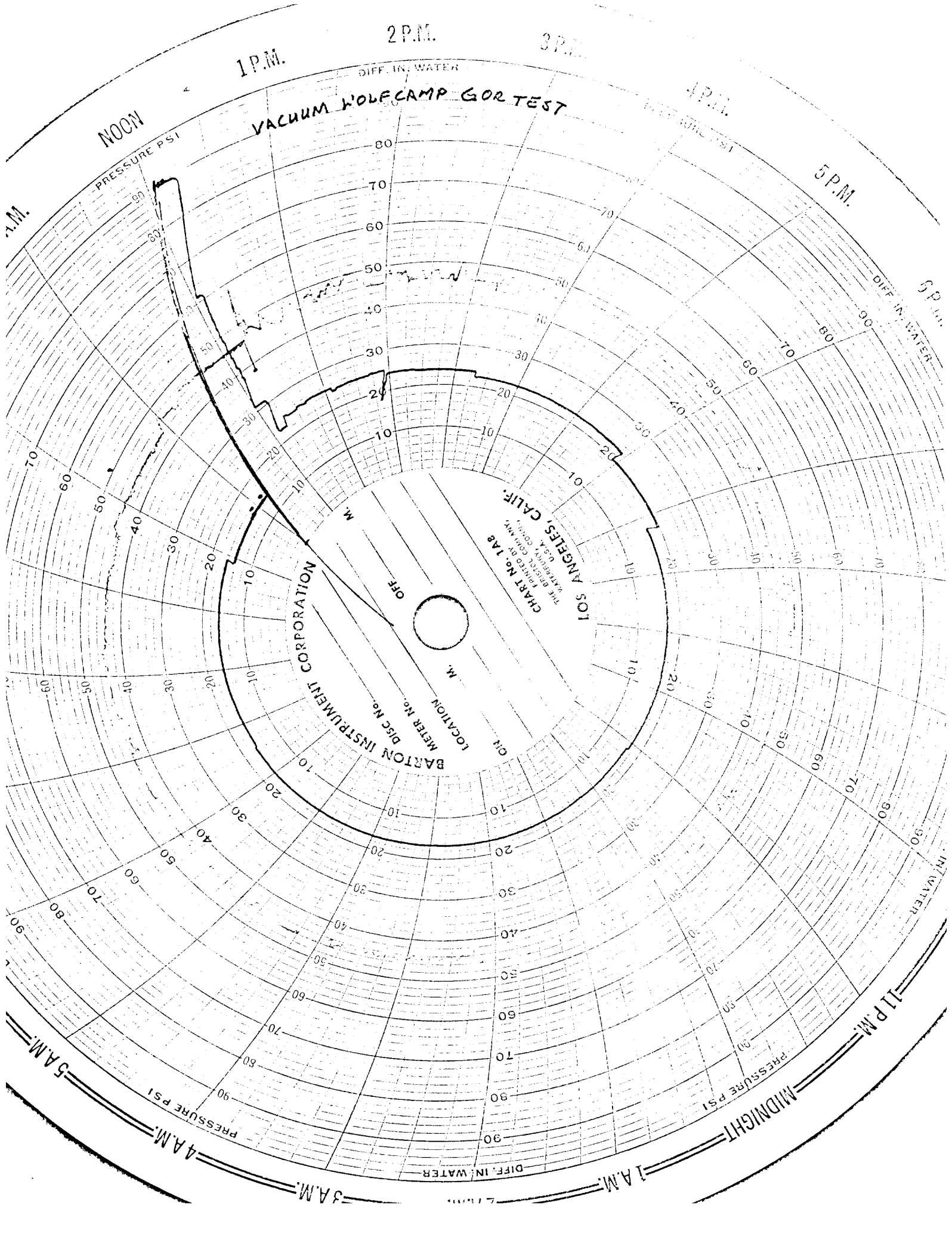












1 P.M.

2 P.M.

3 P.M.

4 P.M.

5 P.M.

6 P.M.

IN WATER

11 P.M.

MIDNIGHT

1 A.M.

3 A.M.

4 A.M.

5 A.M.

NOON

PRESSURE PSI

DIFF. IN. WATER

VACUUM WELLCAMP GOR TEST

BARTON INSTRUMENT CORPORATION
METER No. 128
LOCATION
M.
OFF

CHART No. 128
THE ELECTRIC COMPANY
LOS ANGELES, CALIF.
U.S.A. CO. N.Y.

PRINTED IN U.S.A. 8

67774 C10 CO. 5411
SIXTH AN. 1011 115
1743 115
Chart No. 5

DAY

5

4

3

2

1

12

11

10

9

8

7

6

5

4

3

2

1

PRECISION
ROSS-MARTIN CO. TULSA 74101

METER NUMBER

TIME PUT ON

DATE PUT ON

TIME TAKEN OFF

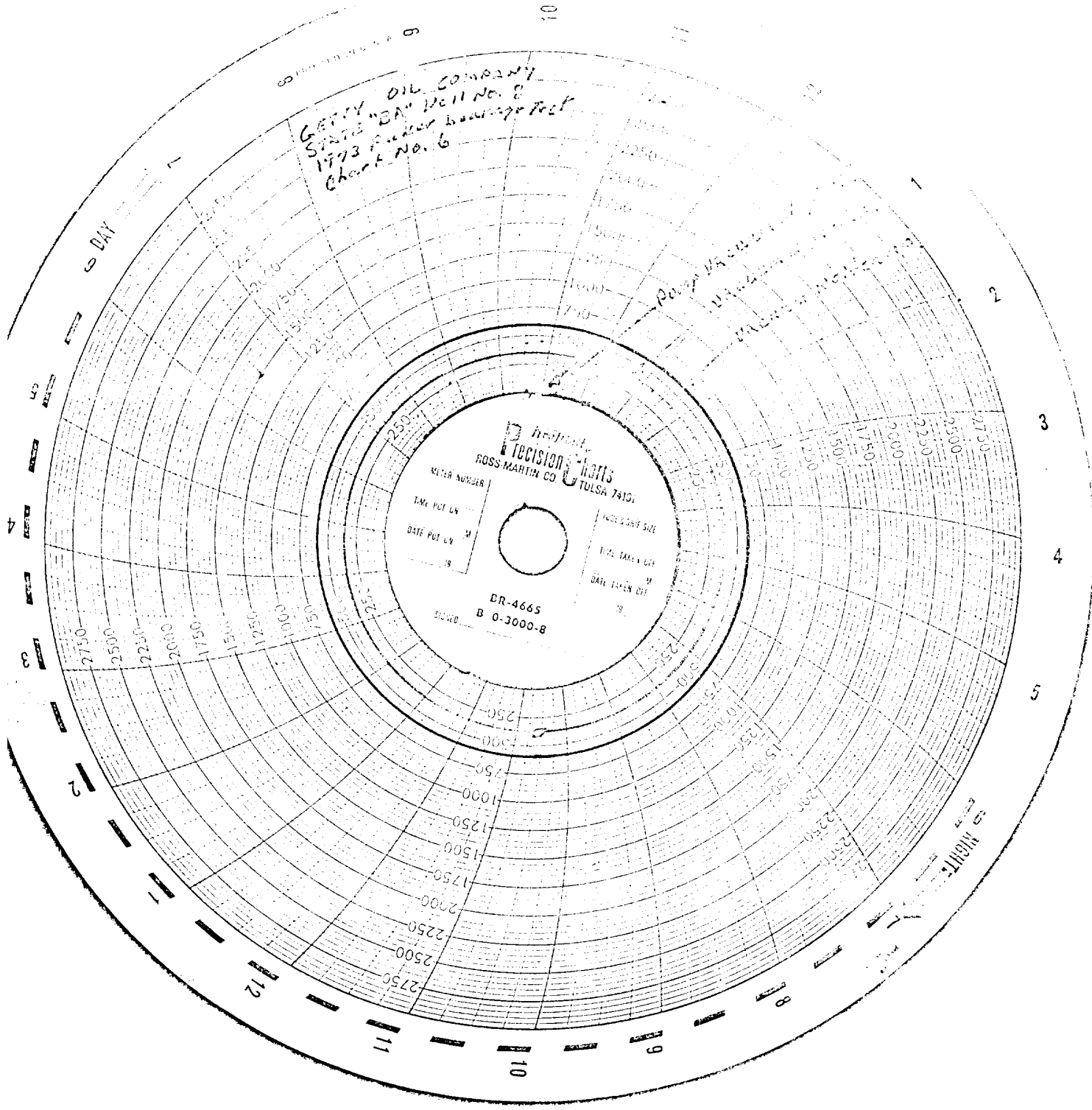
DATE TAKEN OFF

BR-4665

B 0-3000-6

SIGNED

GETTY OIL COMPANY
STATE "BA" Well No. 8
1973 Packer Assembly Test
Chart No. 6



PRECISION LOGS
ROSS-MARTIN CO.
TULSA 74101

METER NUMBER

TIME PUT ON

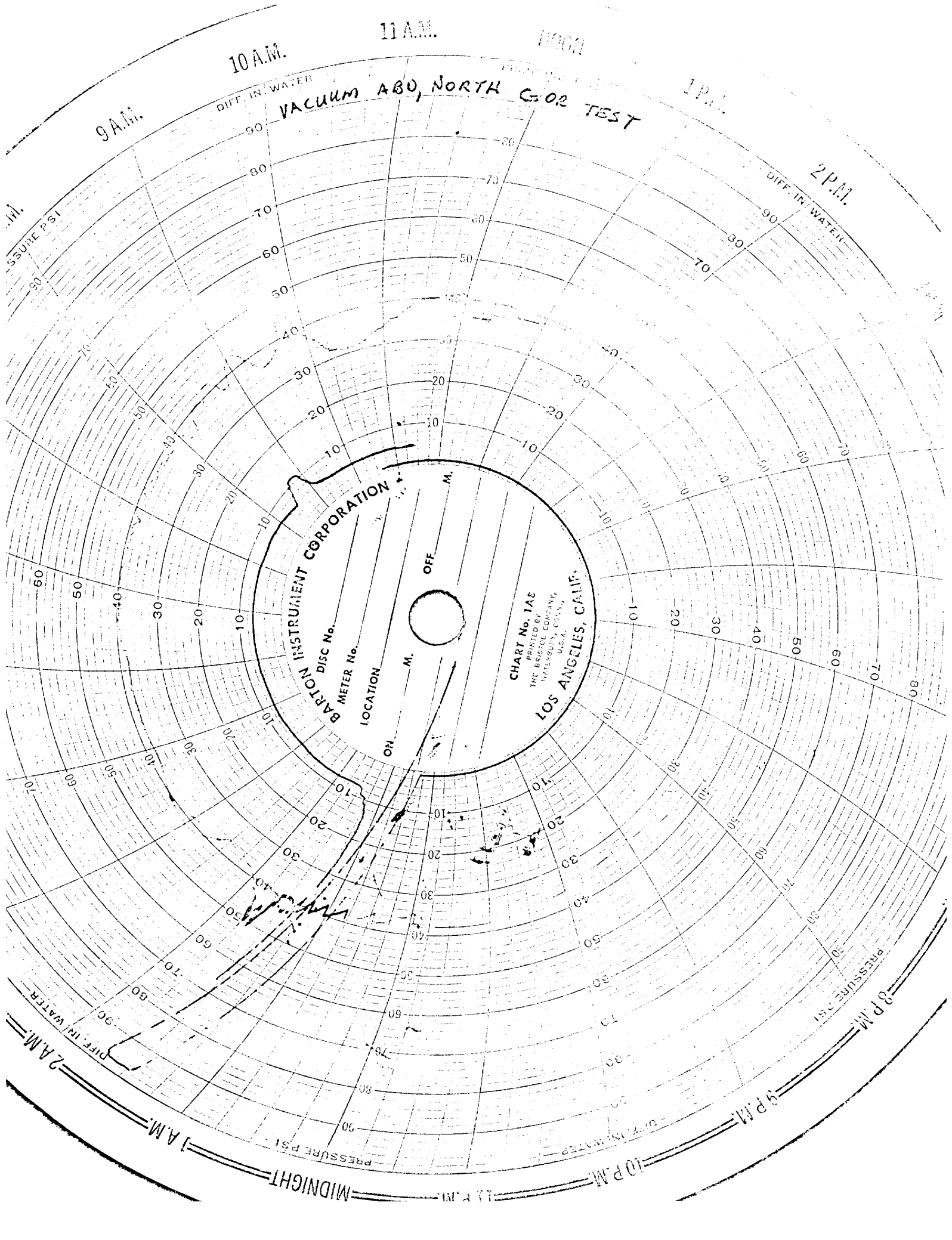
DATE PUT ON

DR-4665
B 0-3000-B

PRESSURE DATE

TIME TAKEN OFF

DATE TAKEN OFF



10 A.M.

11 A.M.

1 P.M.

2 P.M.

3 P.M.

4 P.M.

5 P.M.

6 P.M.

7 P.M.

8 P.M.

9 P.M.

10 P.M.

11 P.M.

MIDNIGHT

1 A.M.

2 A.M.

VACUUM ABO, NORTH GOR TEST

BARTON INSTRUMENT CORPORATION
DISC No.
METER No.
LOCATION

CHART No. 1A8
PRINTED BY
THE BRISTOL COMPANY
MILWAUKEE, WIS.
U.S.A.
LOS ANGELES, CALIF.