

This form is not to  
be used for reporting  
packer leakage tests  
in Northwest New Mexico

## SOUTHEAST NEW MEXICO PACKER LEAKAGE TEST

Operator Getty Oil Company			Lease State BA			Well No. 9	
LOCATION OF WELL	Unit B	Sec. 36	Twp. 17S	Rge. 34E	County Lea		
	NAME OF RESERVOIR OR POOL		TYPE OF PROD. (Oil or Gas)	METHOD OF PROD. FLOW, ART LIFT	PROD. MEDIUM (Tbg or Csg)	CHOKE SIZE	
Upper Compl.	Vacuum Grayburg San Andres		Oil	T.A.	Tbg.	-	
Lower Compl.	Vacuum Blinebry & Glorieta Downhole Commingled		Oil	Pump	Tbg.	-	

## FLOW TEST NO. 1

Both zones shut-in at (hour, date): 9:00 A.M. 9/26/83

Well opened at (hour, date): 9:00 A.M. 9/27/83

	Upper Completion	Lower Completion
Indicate by (X) the zone producing .....		X
Pressure at beginning of test .....	169	117
Stabilized? (Yes or No) .....	Yes	Yes
Maximum pressure during test .....	169	117
Minimum pressure during test .....	169	21
Pressure at conclusion of test .....	169	21
Pressure change during test (Maximum minus Minimum) .....	0	95
Was pressure change an increase or a decrease? .....	Neither	Decrease

Well closed at (hour, date): 9:00 9/28/83 Total Time On  
Production 24 hours

Oil Production Gas Production  
During Test: 8.7 bbls; Grav. 36.7; During Test 11.5 MCF; GOR 1321/1

Remarks: Upper zone T.A.

(Continue on reverse side)

## FLOW TEST NO. 2

	Upper Completion	Lower Completion
Well opened at (hour, date): _____		
Indicate by (X) the zone producing .....		
Pressure at beginning of test .....		
Stabilized? (Yes or No) .....		
Maximum pressure during test .....		
Minimum pressure during test .....		
Pressure at conclusion of test .....		
Pressure change during test (Maximum minus Minimum) .....		
Was pressure change an increase or a decrease? .....		
Well closed at (hour, date): _____	Total Time On Production _____	
Oil Production During Test: _____ bbls; Grav. _____	Gas Production During Test _____ MCF; GOR _____	
Remarks: _____		

I hereby certify that the information herein contained is true and complete to the best of my knowledge.

Approved OCT 21 1983 19 \_\_\_\_\_  
New Mexico Oil Conservation Division

By \_\_\_\_\_  
Title ORIGINAL SIGNED BY EDDIE SEAY  
OIL & GAS INSPECTOR

Operator Getty Oil Company  
By [Signature]  
Title Field Technician  
Date 10/7/83

## SOUTHEAST NEW MEXICO PACKER LEAKAGE TEST INSTRUCTIONS

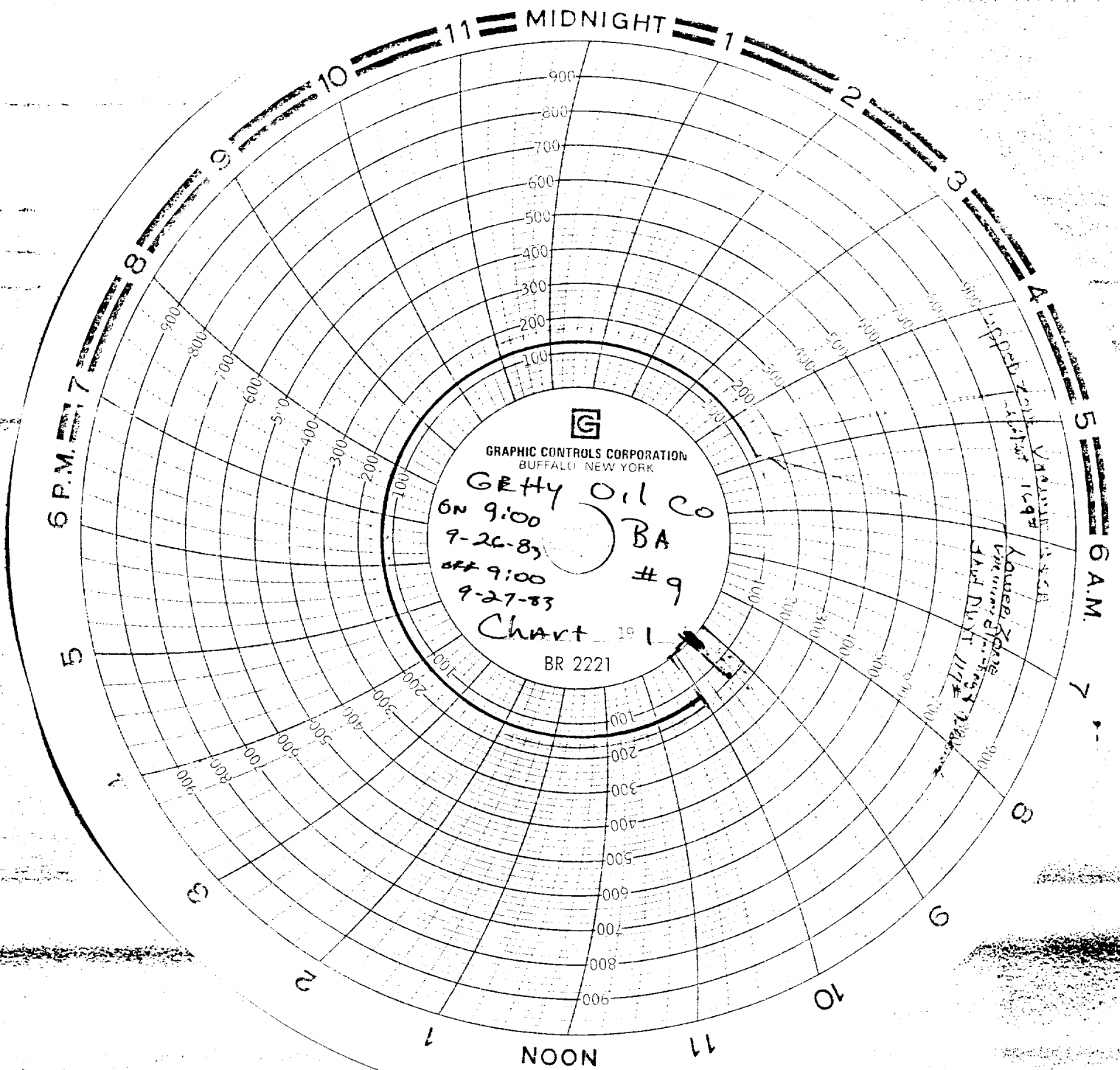
1. A packer leakage test shall be commenced on each multiply completed well within seven days after actual completion of the well, and annually thereafter as prescribed by the order authorizing the multiple completion. Such tests shall also be commenced on all multiple completions within seven days following recompletion and/or chemical or fracture treatment, and whenever remedial work has been done on a well during which the packer or the rubbing have been disturbed. Tests shall also be taken at any time that communication is suspected or when requested by the Division.
2. At least 72 hours prior to the commencement of any packer leakage test, the operator shall notify the Division in writing of the exact time the test is to be commenced. Offset operators shall also be so notified.
3. The packer leakage test shall commence when both zones of the dual completion are shut-in for pressure stabilization. Both zones shall remain shut-in until the well-head pressure in each has stabilized and for a minimum of two hours thereafter, provided however, that they need not remain shut-in more than 24 hours.
4. For Flow Test No. 1, one zone of the dual completion shall be produced at the normal rate of production while the other zone remains shut-in. Such test shall be continued until the flowing wellhead pressure has become stabilized and for a minimum of two hours thereafter, provided however, that the flow test need not continue for more than 24 hours.

5. Following completion of Flow Test No. 1, the well shall again be shut-in, in accordance with Paragraph 3 above.

6. Flow Test No. 2 shall be conducted even though no leak was indicated during Flow Test No. 1. Procedure for Flow Test No. 2 is to be the same as for Flow Test No. 1 except that the previously produced zone shall remain shut-in while the previously shut-in zone is produced.

7. All pressures, throughout the entire test, shall be continuously measured and recorded with recording pressure gauges, the accuracy of which must be checked with deadweight tester at least twice, once at the beginning and once at the end, of each flow test.

8. The results of the above-described tests shall be filed in triplicate within 15 days after completion of the test. They shall be filed with the appropriate District Office of the New Mexico Oil Conservation Division on Southeast New Mexico Packer Leakage Test Form Revised 11-01-58, together with the original pressure recording gauge charts with all the deadweight pressures which were taken and indicated thereon. In lieu of filing the aforesaid charts, the operator may construct a pressure versus time curve for each zone of each test, indicating thereon all pressure changes which may be reflected by the gauge charts as well as all deadweight pressure readings which were taken. If the pressure curve is submitted, the original chart must be permanently filed in the operator's office. Form C-116 shall also accompany the Packer Leakage Test Form when the test period coincides with a gas-oil ratio test period.



RECEIVED  
OCT 12 1983  
C.C.D.  
HOBBS OFFICE

