

NEW MEXICO OIL CONSERVATION COMMISSION
WELL LOCATION AND ACREAGE DEDICATION PLAT

Form C-102
Supersedes C-128
Effective 1-1-65

All distances must be from the outer boundaries of the Section.

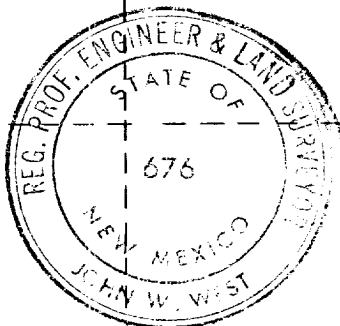
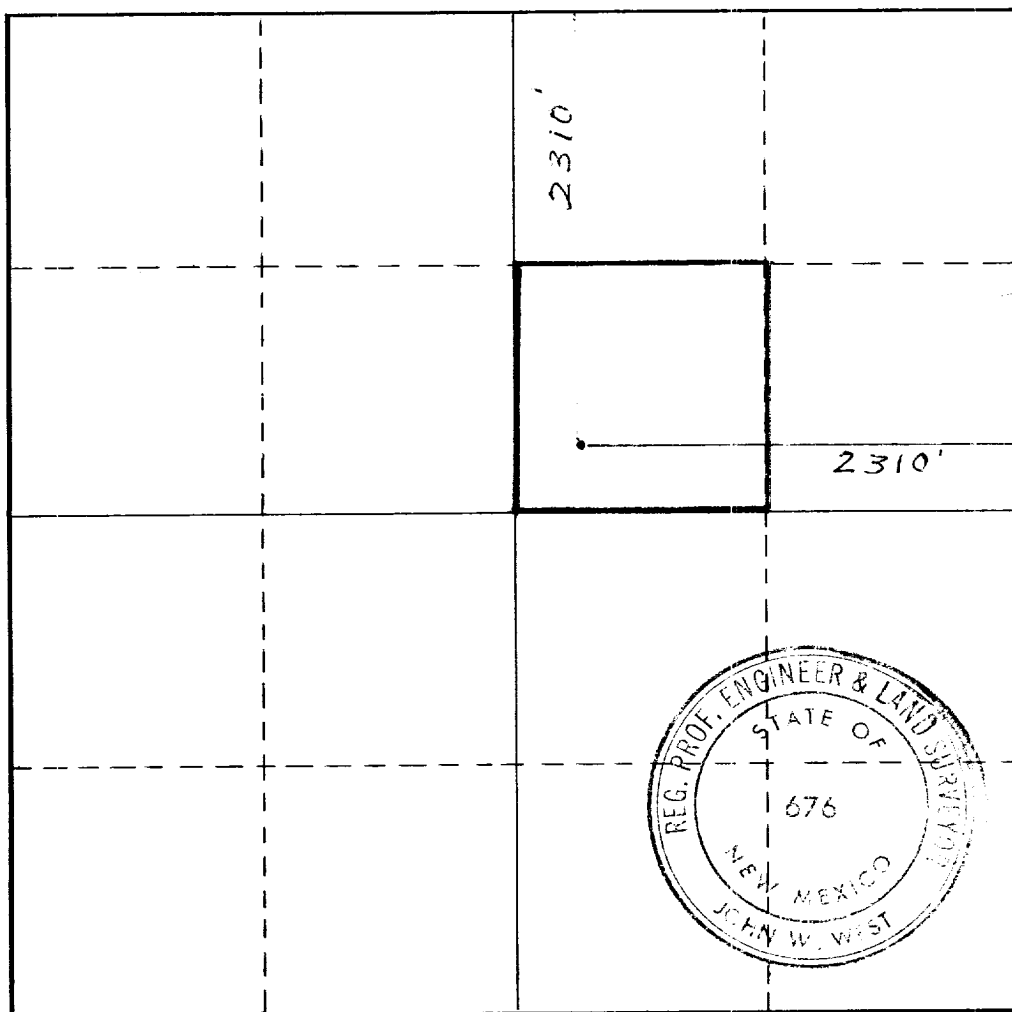
Operator Sinclair Oil & Gas Company			Lease State /L/ US		Well No. 2
Unit Letter G	Section 30	Township 17S	Range 35E	County Lea	
Actual Footage Location of Well: 2310 feet from the North line and 2310 feet from the East line					
Ground Level Elev.	Producing Formation Paddock		Pool Vacuum Glorieta		Dedicated Acreage: 40 Acres

1. Outline the acreage dedicated to the subject well by colored pencil or hatchure marks on the plat below.
2. If more than one lease is dedicated to the well, outline each and identify the ownership thereof (both as to working interest and royalty).
3. If more than one lease of different ownership is dedicated to the well, have the interests of all owners been consolidated by communitization, unitization, force-pooling, etc?

☐ Yes ☐ No If answer is "yes," type of consolidation _____

If answer is "no," list the owners and tract descriptions which have actually been consolidated. (Use reverse side of this form if necessary.) _____

No allowable will be assigned to the well until all interests have been consolidated (by communitization, unitization, forced-pooling, or otherwise) or until a non-standard unit, eliminating such interests, has been approved by the Commission.



CERTIFICATION

I hereby certify that the information contained herein is true and complete to the best of my knowledge and belief.

Name _____
Position **Superintendent**
Company **Sinclair Oil & Gas Co.**
Date **August 23, 1965**

I hereby certify that the well location shown on this plat was plotted from field notes of actual surveys made by me or under my supervision, and that the same is true and correct to the best of my knowledge and belief.

Date Surveyed **August 23, 1965**

Registered Professional Engineer and/or Land Surveyor

676

Certificate No. _____

0 330 660 990 1320 1650 1980 2310 2640 2000 1500 1000 500 0