

**NEW MEXICO OIL CONSERVATION COMMISSION
WELL LOCATION AND ACREAGE DEDICATION PLAT
AMENDED FORM**

Form C-102
Supersedes C-128
Effective 1-1-65

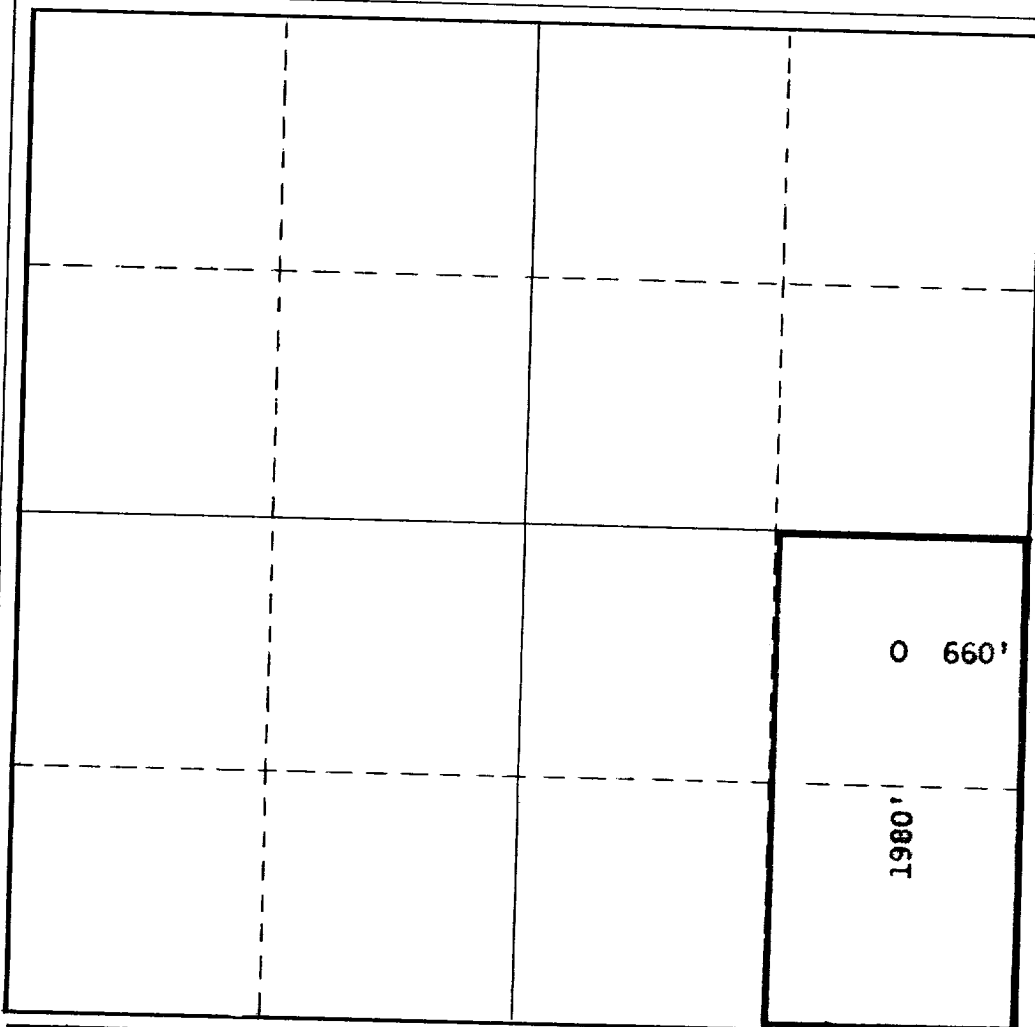
All distances must be from the outer boundaries of the Section.

Operator International Oil & Gas Corporation			Lease Linam Federal		Well No. 1
Unit Letter I	Section 21	Township T-18-S	Range 32-E	County Lea	
Actual Footage Location of Well: 660 feet from the East line and 1980 feet from the South line					
Ground Level Elev. 3764'	Producing Formation Wolfcamp		Pool Young	Dedicated Acreage: 80 Acres	

1. Outline the acreage dedicated to the subject well by colored pencil or hachure marks on the plat below.
2. If more than one lease is dedicated to the well, outline each and identify the ownership thereof (both as to working interest and royalty).
3. If more than one lease of different ownership is dedicated to the well, have the interests of all owners been consolidated by communitization, unitization, force-pooling, etc?
☐ Yes ☒ No If answer is "yes," type of consolidation _____

If answer is "no," list the owners and tract descriptions which have actually been consolidated. (Use reverse side of this form if necessary.) _____

No allowable will be assigned to the well until all interests have been consolidated (by communitization, unitization, forced-pooling, or otherwise) or until a non-standard unit, eliminating such interests, has been approved by the Commission.



CERTIFICATION

I hereby certify that the information contained herein is true and complete to the best of my knowledge and belief.

C. R. Appledorn
Name

C. R. Appledorn
Position

District Superintendent
Company **International Oil & Gas Corporation**

Date
12-27-65

I hereby certify that the well location shown on this plat was plotted from field notes of actual surveys made by me or under my supervision, and that the same is true and correct to the best of my knowledge and belief.

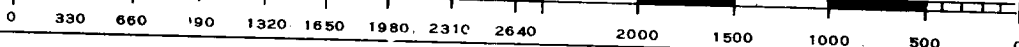
Date Surveyed
September 1, 1965

Registered Professional Engineer and/or Land Surveyor

/S/ James H. Brown

Certificate No.

NMLS No. 542



NEW MEXICO OIL CONSERVATION COMMISSION
WELL LOCATION AND ACREAGE DEDICATION PLAT
AMENDED FORM

Form C-102
Supersedes C-128
Effective 1-1-65

All distances must be from the outer boundaries of the Section.

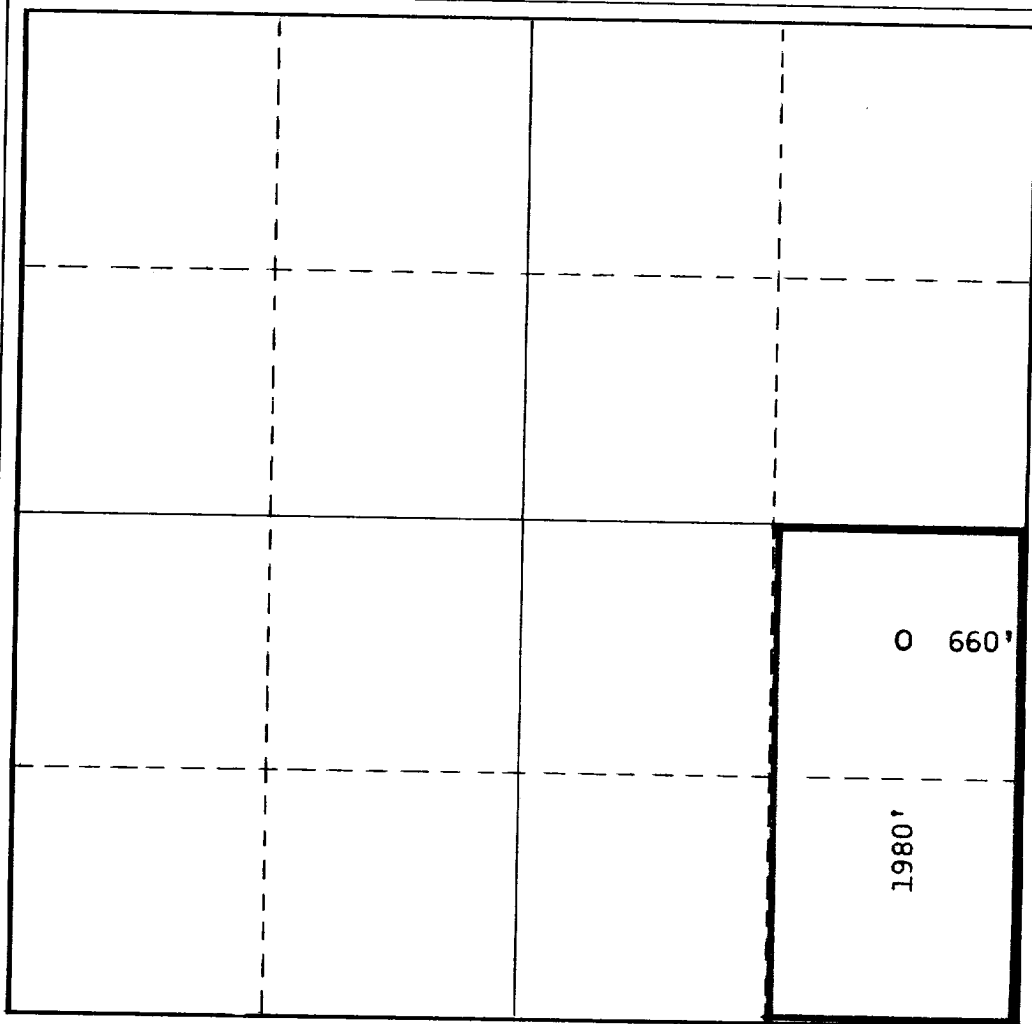
Operator International Oil & Gas Corporation			Lease Linam Federal			Well No. 1		
Unit Letter I	Section 21	Township T-18-S	Range 32-E	County Lea				
Actual Footage Location of Well: 660 feet from the East line and 1980 feet from the South line								
Ground Level Elev. 3764'		Producing Formation Bone Spring			Pool Young		Dedicated Acreage: 80 Acres	

1. Outline the acreage dedicated to the subject well by colored pencil or hachure marks on the plat below.
2. If more than one lease is dedicated to the well, outline each and identify the ownership thereof (both as to working interest and royalty).
3. If more than one lease of different ownership is dedicated to the well, have the interests of all owners been consolidated by communitization, unitization, force-pooling, etc?

☐ Yes ☒ No If answer is "yes," type of consolidation _____

If answer is "no," list the owners and tract descriptions which have actually been consolidated. (Use reverse side of this form if necessary.) _____

No allowable will be assigned to the well until all interests have been consolidated (by communitization, unitization, forced-pooling, or otherwise) or until a non-standard unit, eliminating such interests, has been approved by the Commission.



CERTIFICATION

I hereby certify that the information contained herein is true and complete to the best of my knowledge and belief.

C. R. Appledorn
Name

C. R. Appledorn

Position

District Superintendent

Company **International Oil & Gas Corporation**

Date

12-27-65

I hereby certify that the well location shown on this plat was plotted from field notes of actual surveys made by me or under my supervision, and that the same is true and correct to the best of my knowledge and belief.

Date Surveyed

9-1-65

Registered Professional Engineer and/or Land Surveyor

/S/ James H. Brown

Certificate No.

NMLS No. 542

