

**NEW MEXICO OIL CONSERVATION COMMISSION  
WELL LOCATION AND ACREAGE DEDICATION PLAT**

Form C-102  
Supersedes C-128  
Effective 1-1-65

All distances must be from the outer boundaries of the Section.

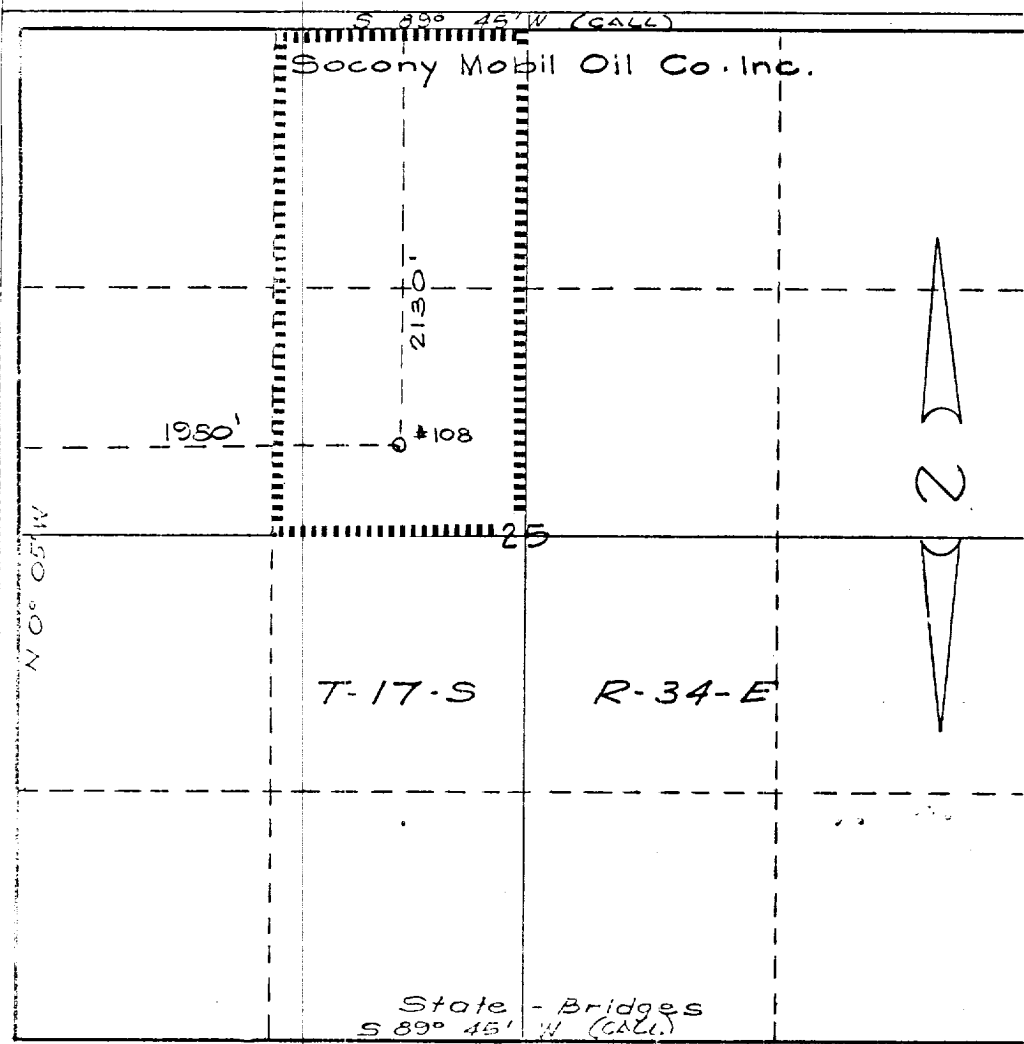
Operator <b>Socony Mobil Oil Company, Inc.</b>			Lease <b>State Bridges</b>		Well No. <b>108</b>
Unit Letter <b>F</b>	Section <b>25</b>	Township <b>17-S</b>	Range <b>34-E</b>	County <b>Lea</b>	
Actual Footage Location of Well: <div style="display: flex; justify-content: space-between;"> <span>2130 feet from the North line and</span> <span>1980 feet from the West line</span> </div>					
Ground Level Elev: <b>4010</b>	Producing Formation <b>North Abo, Wolfcamp, Upper Penn</b>		Pool Vacuum North Abo, Vacuum <b>Wolfcamp, Vacuum Upper Penn.</b>		Dedicated Acreage: <b>80</b> Acres

1. Outline the acreage dedicated to the subject well by colored pencil or hachure marks on the plat below.
2. If more than one lease is dedicated to the well, outline each and identify the ownership thereof (both as to working interest and royalty).
3. If more than one lease of different ownership is dedicated to the well, have the interests of all owners been consolidated by communitization, unitization, force-pooling, etc?

☐ Yes    ☐ No    If answer is "yes," type of consolidation \_\_\_\_\_

If answer is "no," list the owners and tract descriptions which have actually been consolidated. (Use reverse side of this form if necessary.) \_\_\_\_\_

No allowable will be assigned to the well until all interests have been consolidated (by communitization, unitization, forced-pooling, or otherwise) or until a non-standard unit, eliminating such interests, has been approved by the Commission.



**CERTIFICATION**

I hereby certify that the information contained herein is true and complete to the best of my knowledge and belief.

*E. J. Kennon*

Name  
**E. J. Kennon**

Position  
**Group Supervisor**

Company  
**Socony Mobil Oil Co. Inc.**

Date  
**October 12, 1965**

I hereby certify that the well location shown on this plat was plotted from field notes of actual surveys made by me or under my supervision, and that the same is true and correct to the best of my knowledge and belief.

**October 14, 1965**

Date Surveyed

Registered Professional Engineer  
and/or Land Surveyor

*William D. Watson*  
3959

Certificate No.

