

**NEW MEXICO OIL CONSERVATION COMMISSION
WELL LOCATION AND ACREAGE DEDICATION PLAT**

Form C-102
Supersedes C-128
Effective 1-1-65
HOBBS, N.M.
FEB 11 2 11 PM '66

All distances must be from the outer boundaries of the Section.

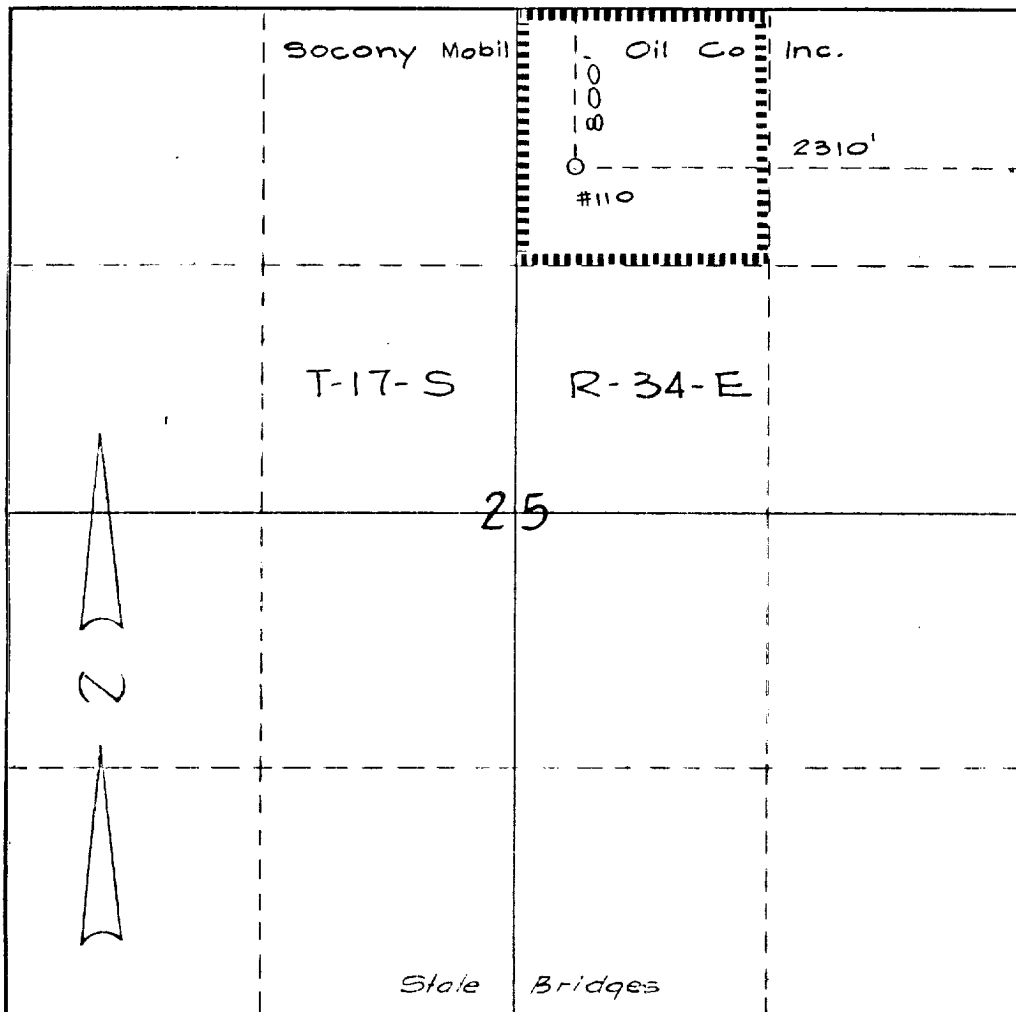
| | | | | | |
|---|--|-------------------------|-------------------------------|----------------------|---------------------------------------|
| Operator Socony Mobil Oil Company, Inc. | | | Lease State Bridges | | Well No. 110 |
| Unit Letter B | Section 25 | Township 17-S | Range 34-E | County Lea | |
| Actual Footage Location of Well: 2310 feet from the East line and 800 feet from the North line | | | | | |
| Ground Level Elev: 4008 | Producing Formation Glorieta | | Pool Vacuum | | Dedicated Acreage: 40 Acres |

1. Outline the acreage dedicated to the subject well by colored pencil or hachure marks on the plat below.
2. If more than one lease is dedicated to the well, outline each and identify the ownership thereof (both as to working interest and royalty).
3. If more than one lease of different ownership is dedicated to the well, have the interests of all owners been consolidated by communitization, unitization, force-pooling, etc?

☐ Yes ☐ No If answer is "yes," type of consolidation _____

If answer is "no," list the owners and tract descriptions which have actually been consolidated. (Use reverse side of this form if necessary.) _____

No allowable will be assigned to the well until all interests have been consolidated (by communitization, unitization, forced-pooling, or otherwise) or until a non-standard unit, eliminating such interests, has been approved by the Commission.



CERTIFICATION

I hereby certify that the information contained herein is true and complete to the best of my knowledge and belief.

E. J. Kennon

Name
E. J. Kennon
Position
Group Supervisor
Company
Socony Mobil Oil Co. Inc.
Date
January 14, 1966

I hereby certify that the well location shown on this plat was plotted from field notes of actual surveys made by me or under my supervision, and that the same is true and correct to the best of my knowledge and belief.

January 14, 1966
Date Surveyed
NEW MEXICO
Professional Engineer
and/or Land Surveyor
JOHN H. SEEREY, JR.
No. **3572**
Certificate No. _____

0 330 660 990 1320 1650 1980 2310 2640 2000 1500 1000 500 0