

NEW MEXICO OIL CONSERVATION COMMISSION
WELL LOCATION AND ACREAGE DEDICATION PLAT
HUBBS OFFICE O. C. C.

Form C-102
Supersedes C-128
Effective 1-1-65

All distances must be from the outer boundaries of the Section.

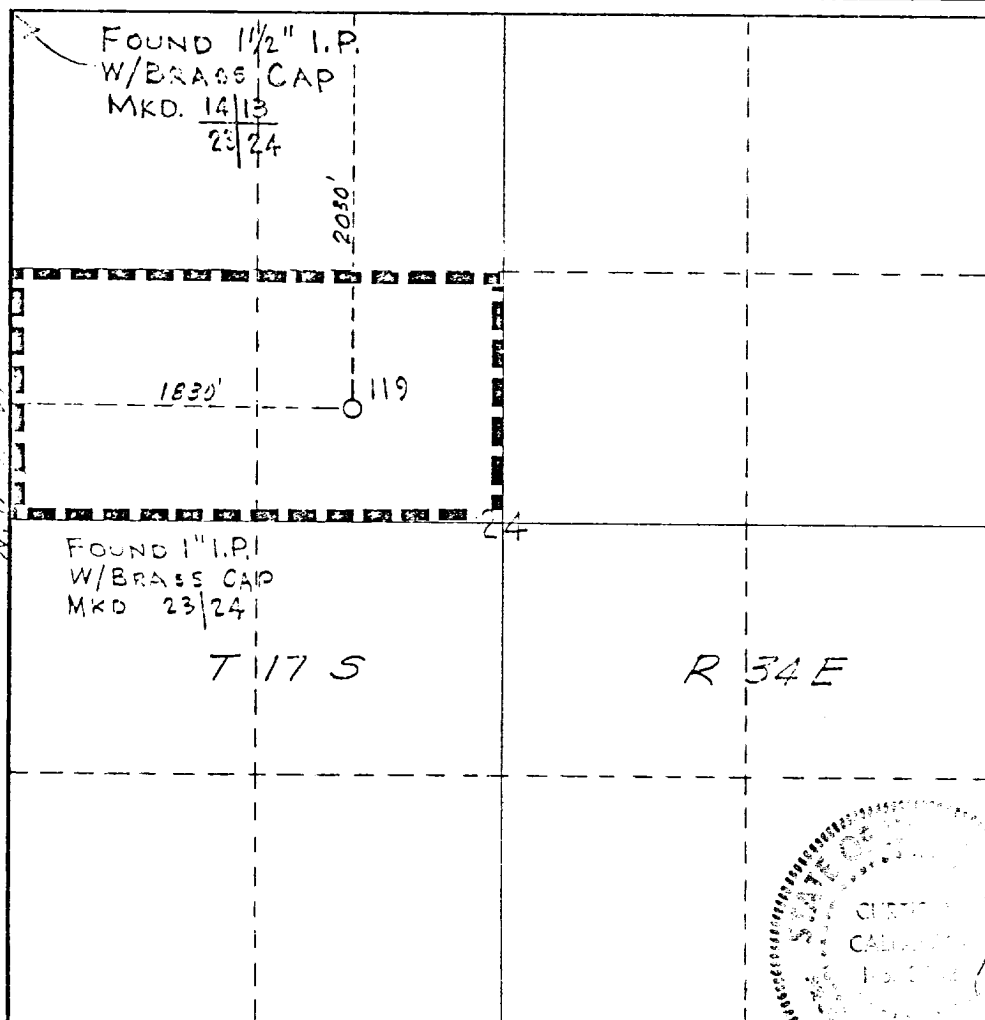
Operator Mobil Oil Corporation		Lease Dec 30 11 17 PM '66		Well No. 119
Unit Letter F	Section 24	Township 17S	Range 34E	County Lea
Actual Footage Location of Well: 1830' feet from the West line and 2030' feet from the North line				
Ground Level Elev. 4034	Producing Formation Upper Penn	Pool Undesignated	Dedicated Acreage: 80 Acres	

1. Outline the acreage dedicated to the subject well by colored pencil or hachure marks on the plat below.
2. If more than one lease is dedicated to the well, outline each and identify the ownership thereof (both as to working interest and royalty).
3. If more than one lease of different ownership is dedicated to the well, have the interests of all owners been consolidated by communitization, unitization, force-pooling, etc?

☐ Yes ☐ No If answer is "yes," type of consolidation _____

If answer is "no," list the owners and tract descriptions which have actually been consolidated. (Use reverse side of this form if necessary.) _____

No allowable will be assigned to the well until all interests have been consolidated (by communitization, unitization, forced-pooling, or otherwise) or until a non-standard unit, eliminating such interests, has been approved by the Commission.



CERTIFICATION

I hereby certify that the information contained herein is true and complete to the best of my knowledge and belief.

B. J. Tibbets
Name

B. J. Tibbets

Position

Operations Engineer

Company

Mobil Oil Corporation

Date

December 28, 1966

I hereby certify that the well location shown on this plat was plotted from field notes of actual surveys made by me or under my supervision, and that the same is true and correct to the best of my knowledge and belief.

Date Surveyed

December 27, 1966

Registered Professional Engineer and/or Land Surveyor

Curtis A. Callaway
Curtis A. Callaway

Certificate No.

2212