

NEW MEXICO OIL CONSERVATION COMMISSION
WELL LOCATION AND ACREAGE DEDICATION PLAT

Form O-102
Supersedes O-128
Effective 1-1-65

All distances must be from the outer boundaries of the Section

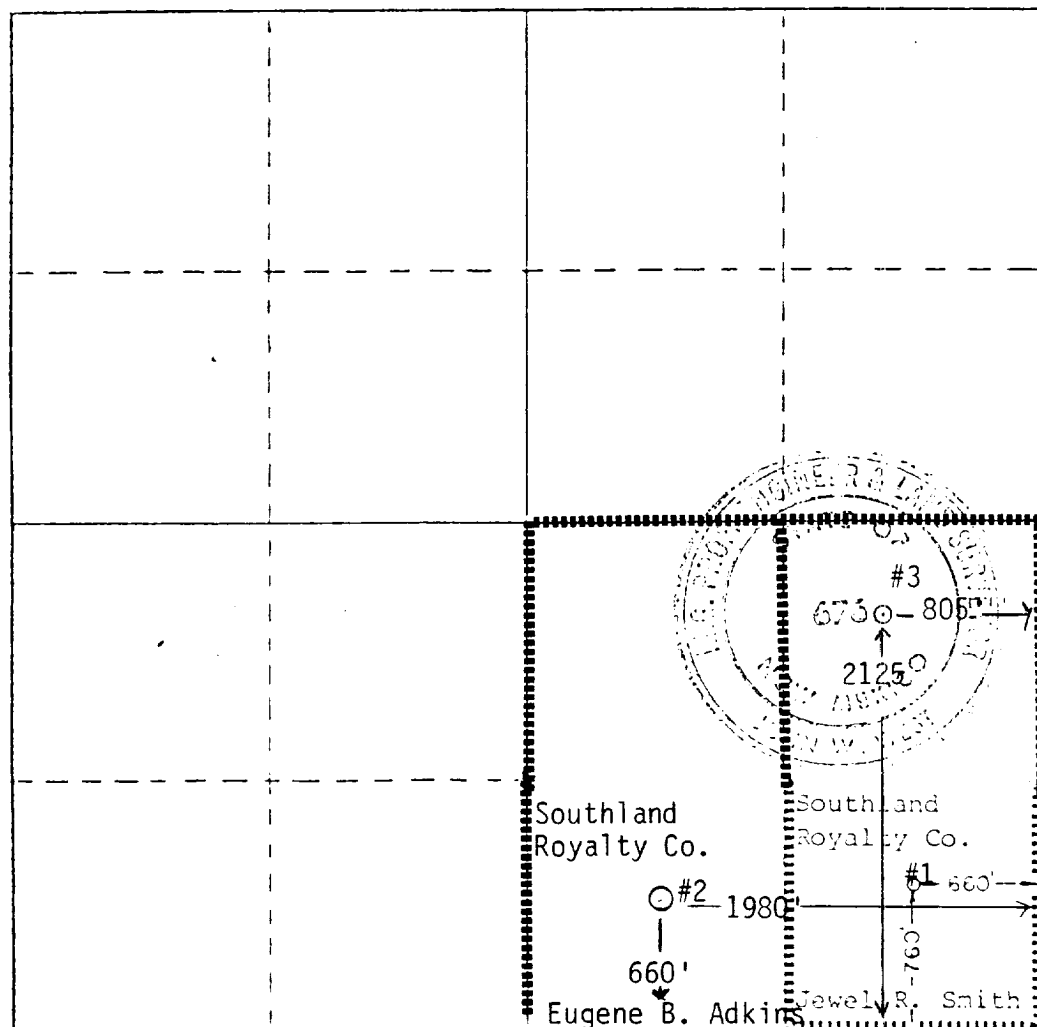
Operator Southland Royalty Co.		Lease Smith 5		Well No. 3
Unit Letter A	Section 5	Township 19 South	Range 35 East	County Lea
Actual Footage Location of Well: 2125 feet from the south line and 805 feet from the east line				
Ground Level Elev. 3866' GR	Producing Formation "YH"	Pool Bone Springs	Dedicated Acreage 80 Acres	

1. Outline the acreage dedicated to the subject well by colored pencil or hachure marks on the plat below.
2. If more than one lease is dedicated to the well, outline each and identify the ownership thereof (both as to working interest and royalty).
3. If more than one lease of different ownership is dedicated to the well, have the interests of all owners been consolidated by communization, unitization, force-pooling, etc?

☐ Yes ☐ No If answer is "yes," type of consolidation _____

If answer is "no," list the owners and tract descriptions which have actually been consolidated. (Use reverse side of this form if necessary.) _____

No allowable will be assigned to the well until all interests have been consolidated (by communization, unitization, forced-pooling, or otherwise) or until a non-standard unit, eliminating such interests, has been approved by the Commission.



CERTIFICATION

I hereby certify that the information contained herein is true and complete to the best of my knowledge and belief.

Name *C. C. Pearson*
Position
District Operations Engineer
Company
Southland Royalty Company
Date
5/6/81

I hereby certify that the well location shown on this plat was plotted from field notes of actual surveys made by me or under my supervision, and that the same is true and correct to the best of my knowledge and belief.

Date Surveyed
12/12/80
Signature of Professional Engineer
and State Surveyor

John W. West
Certificate No. **JOHN W. WEST 676**
PATRICK A. ROMERO 8265
Range & E. 3121 3232