

NEW MICO OIL CONSERVATION COMMISSION  
WELL LOCATION AND ACREAGE DEDICATION PLAT

Form O-100  
Supersedes O-770  
Effective 1-1-67

All distances must be from the outer boundaries of the Section.

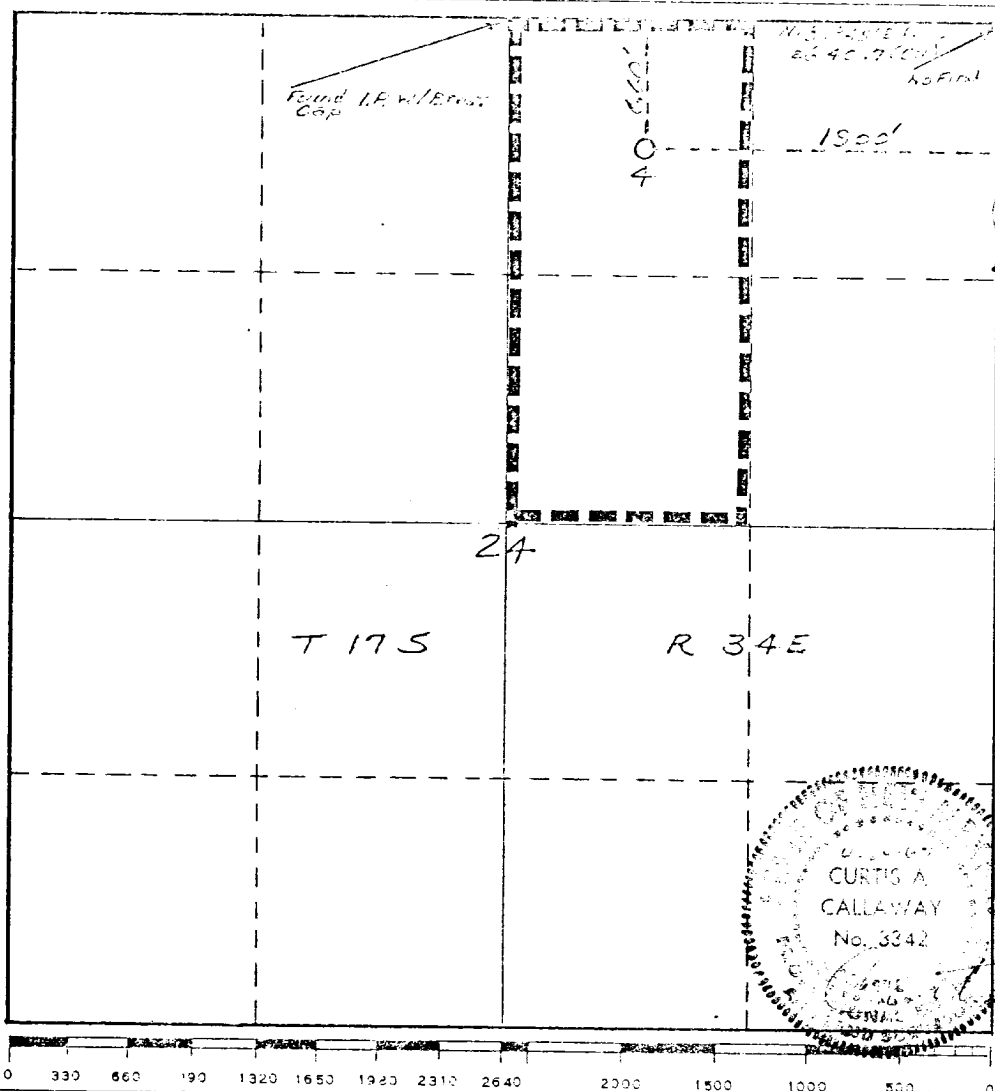
Operator Mobil Oil Corporation			Lease No. 1167		Well No. 4
Unit Letter B	Section 24	Township T17S	Range 34E	County Lea	
Actual Location of Well: 660 feet from the North line and 1900 feet from the East line.					
Ground Level Elev. 4,016'	Underlying Formation Abo, Wolfcamp & Upper Penn		Pool Undesignated	Dedicated Acreage 80 Acres	

1. Outline the acreage dedicated to the subject well by colored pencil or hatchure marks on the plat below.
2. If more than one lease is dedicated to the well, outline each and identify the ownership thereof (both as to working interest and royalty).
3. If more than one lease of different ownership is dedicated to the well, have the interests of all owners been consolidated by communitization, unitization, force-pooling, etc?

☐ Yes ☐ No If answer is "yes," type of consolidation \_\_\_\_\_

If answer is "no," list the owners and tract descriptions which have actually been consolidated. (Use reverse side of this form if necessary.) \_\_\_\_\_

No allowable will be assigned to the well until all interests have been consolidated (by communitization, unitization, forced-pooling, or otherwise) or until a non-standard unit, eliminating such interests, has been approved by the Commission.



CERTIFICATION

I hereby certify that the information contained herein is true and complete to the best of my knowledge and belief.

*B. J. Tibbets*

Name

B. J. Tibbets

Position

Operations Engineer

Company

Mobil Oil Corporation

Date

April 21, 1967

I hereby certify that the well location shown on this plat was plotted from field notes of actual surveys made by me or under my supervision, and that the same is true and correct to the best of my knowledge and belief.

Date Surveyed

April 20, 1967

Registered Professional Engineer and/or Land Surveyor

*Curtis A. Callaway*  
Curtis A. Callaway

Certificate No.

3342