

NEW MEXICO OIL CONSERVATION COMMISSION
WELL LOCATION AND ACREAGE DEDICATION PLAT

Form C-100
Supersedes C-100
Effective 1-1-61

All distances must be from the outer boundaries of the Section

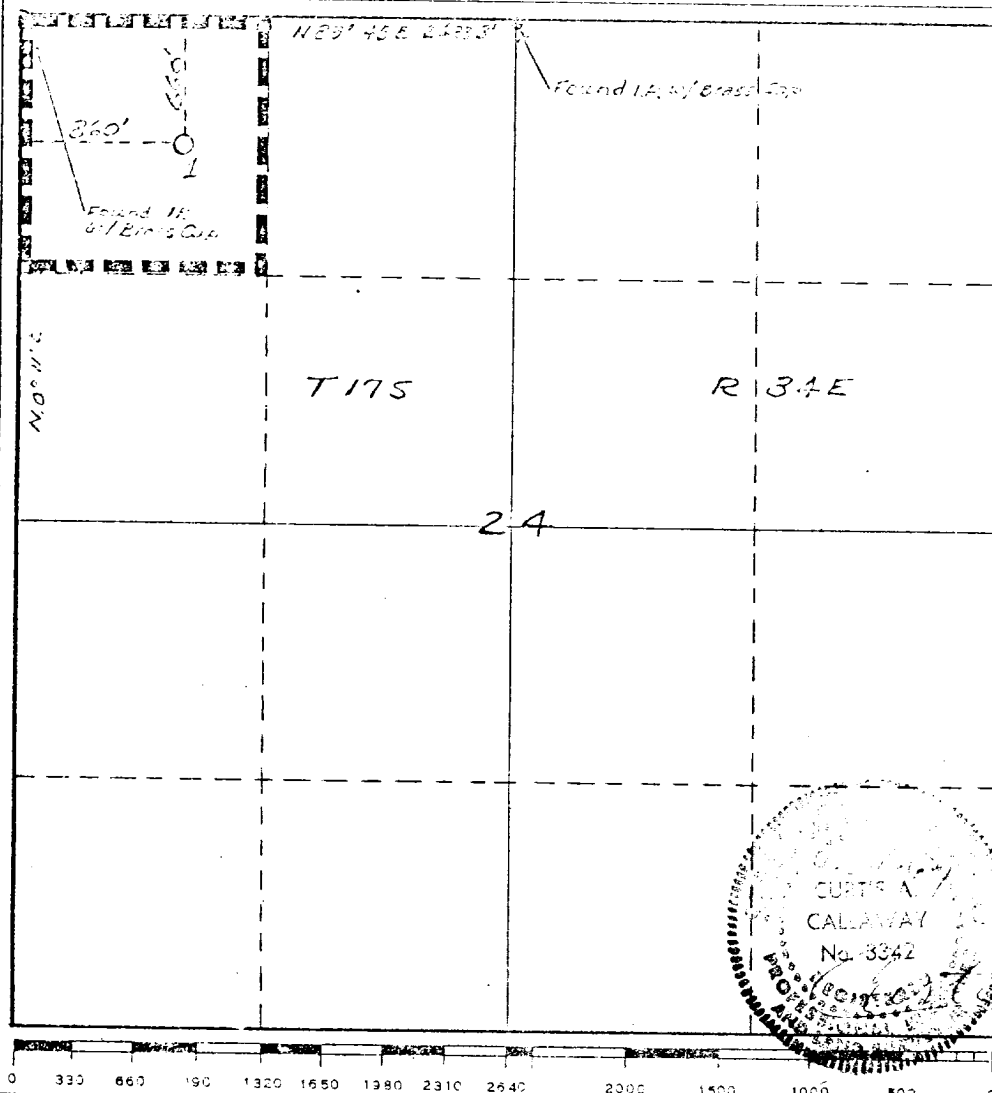
| | | | | | |
|--|---|-----------------|---|---------------|-------------------------|
| Operator Mobil Oil Corporation | | | Lease Bridges Santa Fe State 162 Com | | Well No. 1 |
| Unit Letter D | Section 24 | Township 17S | Range 34E | County Lea | |
| Actual Postage Location of Well: 660 feet from the North line and 860 feet from the West line | | | | | |
| Ground Level Elev. 4020' | Producing Formation Upper Penn & possibly Devonian | | Undesignated | | Dedicated Acreage 40 |

1. Outline the acreage dedicated to the subject well by colored pencil or hachure marks on the plat below.
2. If more than one lease is dedicated to the well, outline each and identify the ownership thereof (both as to working interest and royalty).
3. If more than one lease of different ownership is dedicated to the well, have the interests of all owners been consolidated by communitization, unitization, force-pooling, etc?

☐ Yes ☐ No If answer is "yes," type of consolidation _____

If answer is "no," list the owners and tract descriptions which have actually been consolidated. (Use reverse side of this form if necessary.) _____

No allowable will be assigned to the well until all interests have been consolidated (by communitization, unitization, forced-pooling, or otherwise) or until a non-standard unit, eliminating such interests, has been approved by the Commission.



CERTIFICATION

I hereby certify that the information contained herein is true and complete to the best of my knowledge and belief.

Name
B. J. Tibbets
Position
Operations Engineer
Company
Mobil Oil Corporation
Date
April 21, 1967

I hereby certify that the well location shown on this plat was plotted from field notes of actual surveys made by me or under my supervision, and that the same is true and correct to the best of my knowledge and belief.

Date Surveyed
April 20, 1967
Registered Professional Engineer and/or Land Surveyor
Curtis A. Callaway
Certificate No.
3342