

WELL LOCATION AND ACREAGE DEDICATION PLAT

Supersedes C-128
Effective 1-1-65

All distances must be from the outer boundaries of the Section.

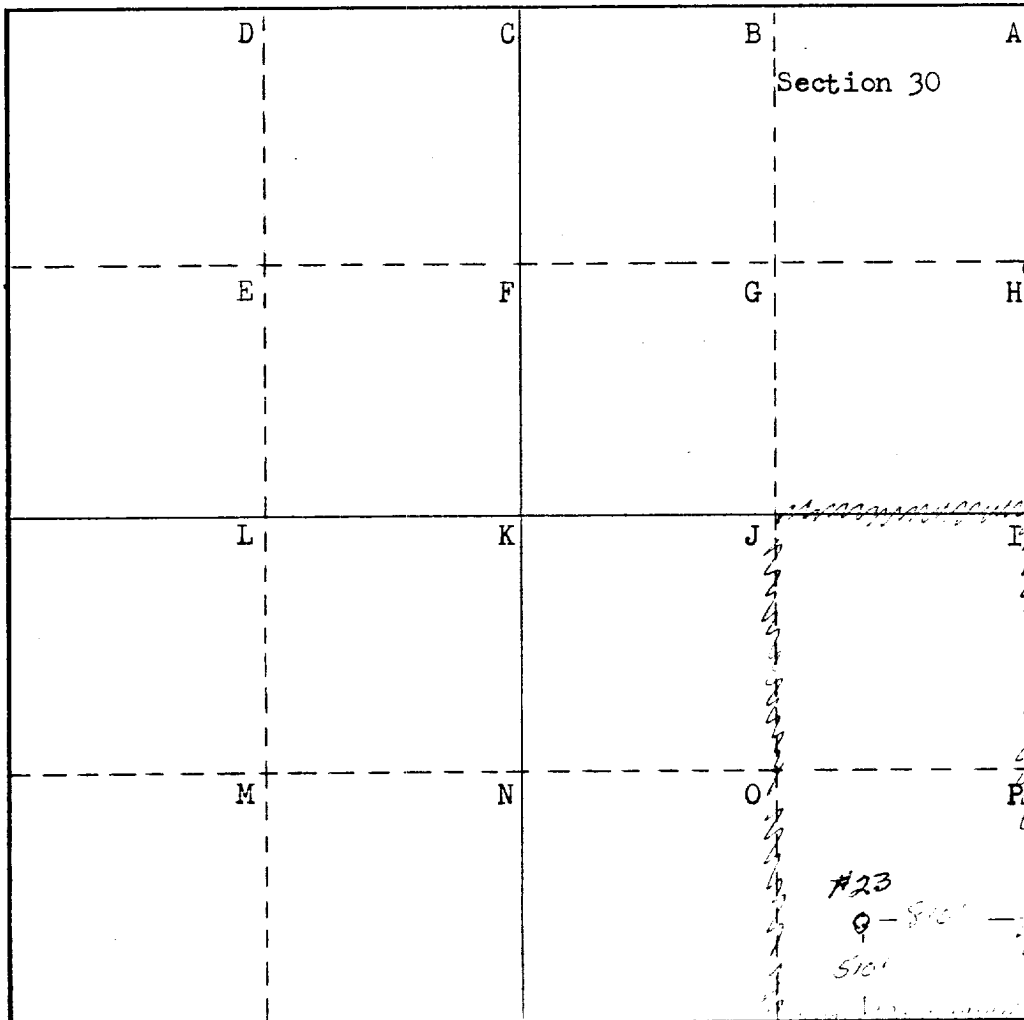
Operator Phillips Petroleum Company			Lease Lea		Well No. 23
Unit Letter P	Section 30	Township 17-S	Range 34-E	County Lea	
Actual Footage Location of Well: 510 feet from the south line and 810 feet from the east line					
Ground Level Elev. 4103' RKB	Producing Formation Abo		Pool Vacuum North Abo		Dedicated Acreage: 80 Acres

1. Outline the acreage dedicated to the subject well by colored pencil or hachure marks on the plat below.
2. If more than one lease is dedicated to the well, outline each and identify the ownership thereof (both as to working interest and royalty).
3. If more than one lease of different ownership is dedicated to the well, have the interests of all owners been consolidated by communitization, unitization, force-pooling, etc?

☐ Yes ☐ No If answer is "yes," type of consolidation ---

If answer is "no," list the owners and tract descriptions which have actually been consolidated. (Use reverse side of this form if necessary.) ---

No allowable will be assigned to the well until all interests have been consolidated (by communitization, unitization, forced-pooling, or otherwise) or until a non-standard unit, eliminating such interests, has been approved by the Commission.



CERTIFICATION

I hereby certify that the information contained herein is true and complete to the best of my knowledge and belief.

Name
W. J. Mueller
Position
Senior Reservoir Engineer
Company
Phillips Petroleum Company
Date
1-25-72

I hereby certify that the well location shown on this plat was plotted from field notes of actual surveys made by me or under my supervision, and that the same is true and correct to the best of my knowledge and belief.

Date Surveyed
3-19-68
Roger L. Leffler
Registered Professional Engineer and/or Land Surveyor

Certificate No.

4357

0 330 660 990 1320 1650 1980 2310 2640 2000 1500 1000 500 0

RECEIVED

JAN 23 1972

OIL CONSERVATION COMM.
WASH. D. C.