

COUNTY LEA

OPR

UNION OIL CO. OF CALIF.

1 Midway - State

Sec 12, T-17-S, R-36-E

2310' FNL, 2310' FWL of Sec

Re-Cmp 9-15-72

CSG &amp; SX - TUBING

11 3/4" at 456' w/500 sx

8 5/8" at 4460' w/400 sx

5 1/2" at 11,671' w/670 sx

LOGS EL GR RA IND HC A

TD 11,671' PBD 11,465'

(Devonian) Perfs 11,405-427' w/ 80% POTENTIAL

Distribution limited and publication prohibited by subscribers' agreement  
 Reproduction rights reserved by Williams & Lee Scouting Service, Inc.

PROP DEPTH 11,465' TYPE WO

CONT.  
DATE

10-2-72

10-7-72

F.R.C. 10-7-72; Opr's Elev. 3818' GI  
 PD 11,465' WO (Devonian)  
 (Orig. comp 12-22-78 then (Devonian) Perfs  
 11,476-520', OUD 11,671', OPR 11,590')  
 ID 11,671', PBD 11,465'; COMPLETE  
 PE to 11,465'  
 Perf 11,405-409', 11,419-427' w/ 80%  
 Acid (11,405-427') 350 gals  
 COMPLETION REPORTED

COUNTY LEA FIELD Wildcat STATE NM 30-025-22794  
OPR UNION OIL CO. OF CALIFORNIA MAP  
1 Midway State CO-ORD  
Sec 12, T-17-S, R-36-E  
2310' FNL, 2310' FWL of Sec.  
Spd 10-23-68  
Cmp 12-22-68

	CLASS			
	FORMATION	DATUM	FORMATION	DATUM
CSG & SX - TUBING				
11 3/4" at 456' w/300 sx				
8 5/8" at 4460' w/400 sx				
5 1/2" at 11,671' w/670 sx				
LOGS EL GR RA IND HC A				

TD 11,671'; PBD 11,590'  
 IP (Devonian) Perf 11,476-520' F 538 BOPD. Pot based on 24 hr  
 test thru 32/64" chk. GOR 170; Grav 49; TP 65#.

Distribution limited and publication prohibited by subscribers' agreement.  
 Reproduction rights reserved by Williams & Lee Scouting Service, Inc.

CONT. McVay PROP DEPTH 12,000' TYPE  
 DATE

F.R. 10-17-68  
 PD 12,000' (Devonian)  
 Contractor - McVay  
 1-2-69 AMEND LEASE NAME, Formerly reported as  
 Amerada 12 State.  
 10-28-68 Drlg. 3160'  
 11-4-68 TD 4460'; Rng casing  
 11-11-68 Drlg. 7570'  
 11-18-68 Drlg. 8860'  
 11-25-68 Drlg. 9810'  
 DST 9355-9483', open 1 hr, rec 2577' sul wtr,  
 30 min ISIP 2915#, FP 552-1318#, 2 hr FSIP 2915#  
 Drlg. 10,880'  
 12-2-68 TD 11,444'; Prep Drill  
 12-9-68 DST 11,335-444', open 2 hrs, GTS 1 hr 25 min  
 @ TSTM, rev out 99 BO + 1860' WB, rec 180' HO&GCM  
 below sub, 30 min ISIP 4391#, FP 1566-3508#,  
 2 hr 30 min FSIP 4391#

LEA

Wildcat

NM

Sec 12, T17S, R36E

UNION OIL CO. OF CALIF. 1 Midway State

Page #2

12-16-68

TD 11,671'; Prep DST 11,640-671'  
DST 11,499-541', open 2 hrs (1850' WB),  
GTS 1 hr 30 min @ TSTM, rev out WB + 45 BO  
(grav 47), rec 180' O&GCM below sub, no ISIP,  
FP 869-2122#, no FSIP  
DST 11,544-645', open 2 hrs, (1900' WB),  
rev out WB + 7 BO (grav 44), rec 100' OCM below  
sub, no ISIP, FP 972-1202#, 1 hr FSIP 3548#  
12-23-68 TD 11,671'; WO Completion Unit  
DST 11,640-671', open 2 hrs, rec 1954' WB +  
30' SGCM + 218' wtr, 1 hr ISIP 4190#,  
FP 952-1000#, 4 hr FSIP 4351#  
12-30-68 TD 11,671'; PBD 11,590'; COMPLETE  
Perf 11,476-520' w/23 shots (overall)

12-30-68

Continued

Acid (11,476-520') 750 gals  
LOG TOPS: Anhydrite 1900', Yates 3065',  
Queen 3834', San Andres 4740', Glorieta 6105',  
Bone Springs 8650', Abo 9000', Wolfcamp 9400',  
Pennsylvanian 10,310', Strawn 10,436',  
Mississippian 10,590', Woodford 11,145',  
Devonian 11,310'  
COMPLETION REPORTED

1-2-69

**NEW MEXICO OIL CONSERVATION COMMISSION  
WELL LOCATION AND ACREAGE DEDICATION PLAT**

Form C-102  
Supersedes C-128  
Effective 1-1-65

All distances must be from the outer boundaries of the Section.

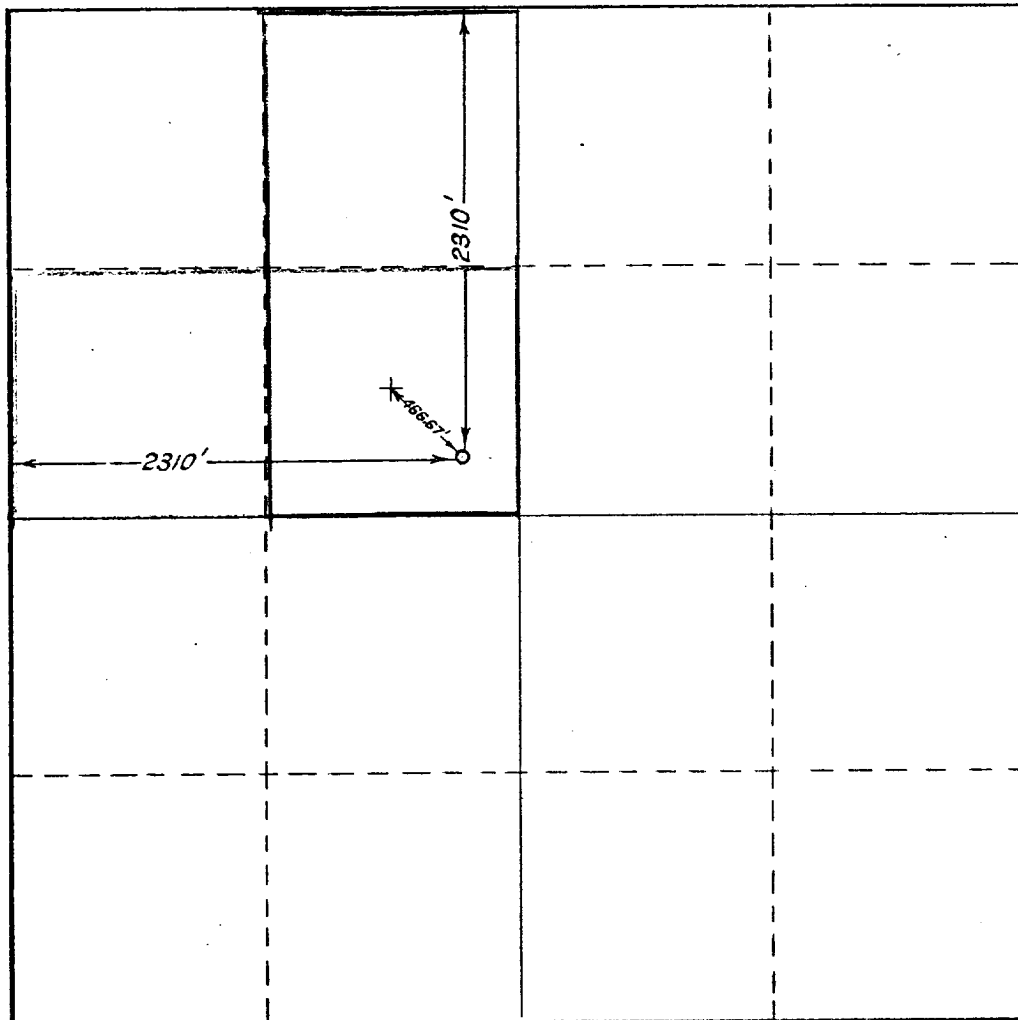
Operator <b>UNION OIL COMPANY OF CALIFORNIA</b>			Lease <b>MIDWAY STATE</b>		Well No. <b>1</b>
Unit Letter <b>F</b>	Section <b>12</b>	Township <b>T-17-S</b>	Range <b>R-36-E</b>	County <b>LEA</b>	
Actual Footage Location of Well:					
<b>2310</b>		feet from the <b>NORTH</b>	line and	<b>2310</b>	feet from the <b>WEST</b> line
Ground Level Elev: <b>3818'</b>	Producing Formation <b>DEVONIAN</b>		Pool <b>LOVINGTON-DEVONIAN</b>		Dedicated Acreage: <b>80</b> Acres

1. Outline the acreage dedicated to the subject well by colored pencil or hachure marks on the plat below.
2. If more than one lease is dedicated to the well, outline each and identify the ownership thereof (both as to working interest and royalty).
3. If more than one lease of different ownership is dedicated to the well, have the interests of all owners been consolidated by communitization, unitization, force-pooling, etc?

☐ Yes    ☐ No    If answer is "yes," type of consolidation \_\_\_\_\_

If answer is "no," list the owners and tract descriptions which have actually been consolidated. (Use reverse side of this form if necessary.) \_\_\_\_\_

No allowable will be assigned to the well until all interests have been consolidated (by communitization, unitization, forced-pooling, or otherwise) or until a non-standard unit, eliminating such interests, has been approved by the Commission.



**CERTIFICATION**

*I hereby certify that the information contained herein is true and complete to the best of my knowledge and belief.*

Name William C. Coombes  
Position District Operations Mgr.  
Company Union Oil Co. of California  
Date March 21, 1969

*I hereby certify that the well location shown on this plat was plotted from field notes of actual surveys made by me or under my supervision, and that the same is true and correct to the best of my knowledge and belief.*

Date Surveyed \_\_\_\_\_  
Registered Professional Engineer and/or Land Surveyor \_\_\_\_\_

Certificate No. \_\_\_\_\_

