

COUNTY IEA FIELD Wildcat STATE NM 30-025-23319  
 OPR PENNZOIL UNITED, INC. MAP  
 2 Mescalero Ridge Unit CO-ORD  
 Sec 35, T-19-S, R-34-E  
 2310' FSL, 1800' FEL of Sec.  
 Spd 10-1-69  
 Cmp 2-5-70

CSG & SX - TUBING  
 13 3/8" at 855' w/800 SX  
 9 5/8" at 5168' w/425 SX  
 7 5/8" at 10,293' w/600 SX.

FORMATION	CLASS	FORMATION	DATUM

LOGS EL GR RA IND HC A TD 13,980'; PBD 10,016'  
 IP (Bone Springs) Perfs 9672-91' F 412 BOPD + 21 BW. Pot based on  
 22 hr test of 376 BO + 20 BW thru 14/64" chk. GOR 1890; Grav 41;  
 TP 1375#.

CONT. Noble  
 DATE  
 Distribution limited and publication prohibited by subscribers' agreement.  
 Reproduction rights reserved by Williams & Lee Scouting Service, Inc.  
 PROP DEPTH 14,000' TYPE

10-6-69 F.R. 10-7-69  
 10-13-69 PD 14,000' (Morrow)  
 10-20-69 Contractor - Noble  
 10-27-69 Drlg. 3165' anhy & salt  
 11-3-69 Drlg. 4920' 1m  
 Drlg. 5985' 1m  
 Drlg. 8585' 1m  
 TD 9682' 1m, sh & sd; On DST  
 DST (Bone Springs) 9450-68', open 9 hrs 45 min,  
 GTS 10 min @ 500 MCFGPD thru 1" chk  
 Flwd gas @ 420 - 195 MCFGPD thru 1/2" chk,  
 OTS 2 hrs 15 min, Flwd 33 BO (Grav 37)  
 Rev out 33 BO, Rec 90' HO&GCM below sub,  
 1 hr 30 min ISIP 3915#, FP 996-803#,  
 6 hr FSIP 3247#

LEA.

PENNZOIL UNITED, INC.

Wildcat

NM Sec 35, T9S, R34E  
2 Mescalero Ridge Unit

Page #2

11-3-69

Continued

DST (Bone Springs) 9490-9620', open 2 hrs  
30 min, Rec 165' sli O&GCM + 2697' GIDP,  
1 hr 30 min ISIP 1561#, FP 94-133#, 2 hr

11-10-69

FSIP 918#

Drig. 10,234'

DST 9630-82', open 2 hrs 45 min, GTS 10 min  
thru 1" chk, Flwd gas @ 5.2 MMCFGPD thru 1"  
chk, FTP 1500#, MTS 25 min, OTS 40 min

11-17-69

Flwd 94 BO (Grav 40) in 2 hrs, GOR 1700  
Rev out & Flwd 53 BO, Rec 120' very hvy O&GCM  
below sub, 2 hr 30 min ISIP 4160#, FP 3851-4096#  
4 hr 30 min FSIP 4185#, HP 4284-4234#  
Drig. 10,410' 1m & sd

11-24-69

12-1-69

12-8-69

12-16-69

12-22-69

1-5-70

Drig. 11,095' sh

Drig. 11,558' 1m & sh

Drig. 12,260' 1m & sh

Drig. 12,692' 1m & sh

Drig. 12,967'

Drig. 13,440' 1m, sh & sd

DST 13,080-109', open 3 hrs 50 min, Rec 15' GCWB  
+ 990' GCDM, 1 hr 30 min ISIP 2894#, FP 716-  
716#, 3 hr 30 min FSIP 4606#

DST 13,170-320', open 8 hrs 20 min (1492' WB),  
Rec 1492' GCWB + 5588' GCDM, 1 hr 30 min ISIP  
4624#, FP 919-4395#, 5 hr FSIP 6800#

1-12-70

Drig. 13,713' 1m, sh & sd

DST 13,407-535', open 3 hrs 15 min,  
Rev out 13,000' salt wtr, 1 hr 30 min ISIP  
6008#, FP 5888-6008#, 3 hr FSIP 6207#

1-19-70  
1-26-70  
2-2-70

TD 13,980' 1m & cht; Rng Logs  
TD 13,980'; PBD 10,208'; Prep Perf  
TD 13,980'; PBD 10,016'; Tstg  
Perf 10,190-196' w/1 SPF  
Acid (10,190-196') 250 gals  
Swbd dry (10,190-196')  
Acid (10,190-196') 2500 gals  
Swbd 70 BF & Swbd dry (10,190-196')  
PB to 10,016'  
Perf @ 9672', 9673', 9674', 9675', 9678',  
9687', 9689', 9690', 9691'  
Swbd & Flwd 305 BO & AW in 12 hrs (9672-91')  
2-9-70 TD 13,980'; PBD 10,016'; WO Potential  
Acid (9672-91') 3000 gals (15%)

2-9-70

Continued  
Flwd 412 BOPD in 24 hrs thru 14/64" chk,  
GOR 1890, Grav 41, TP 1375#  
2-16-70 TD 13,980'; PBD 10,016'; WO Potential  
2-23-70 TD 13,980'; PBD 10,016'; COMPLETE  
No Tops Released  
(Bone Springs Discovery)  
2-26-70 COMPLETION REPORTED

**NEW MEXICO OIL CONSERVATION COMMISSION  
WELL LOCATION AND ACREAGE DEDICATION PLAT**

Form C-102  
Supersedes C-128  
Effective 1-1-65

All distances must be from the outer boundaries of the Section.

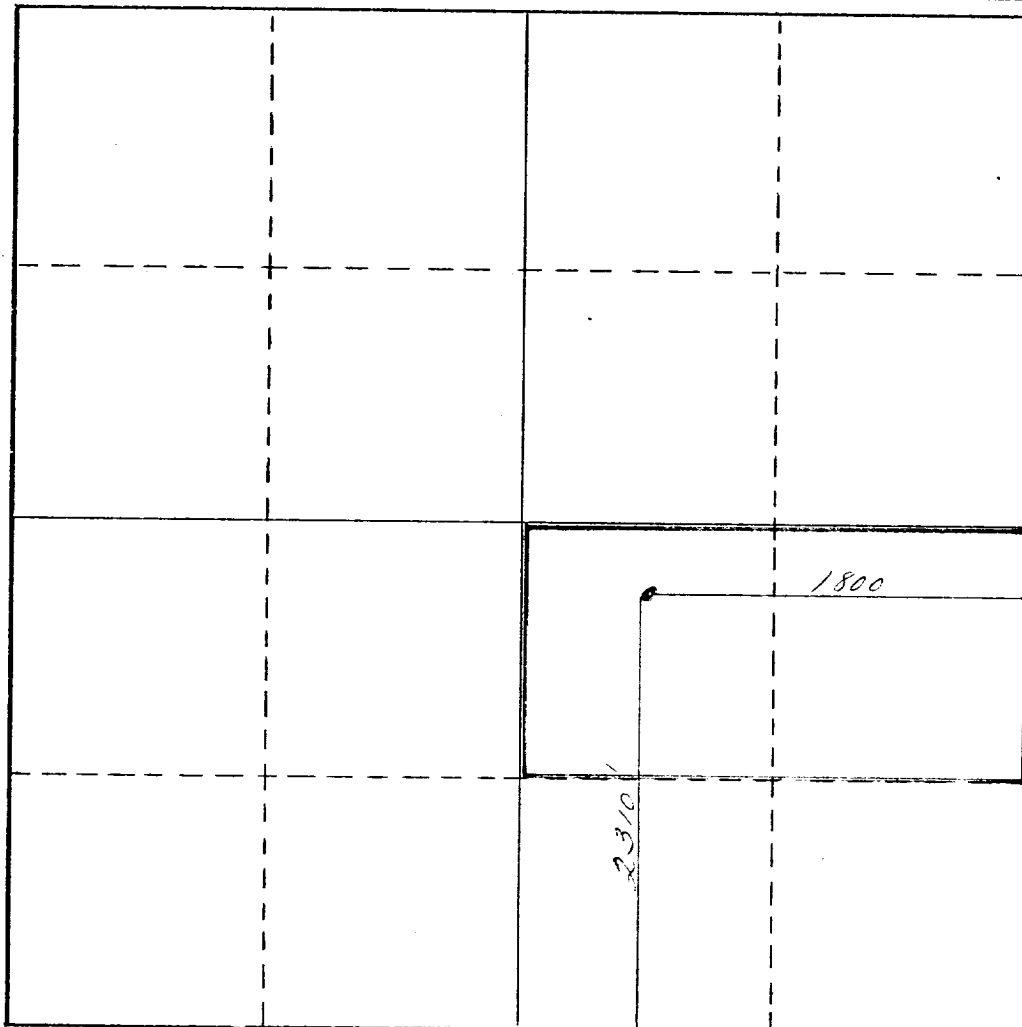
Operator <b>Pennzoil United, Inc.</b>			Lease <b>Mescalero Ridge Unit</b>		Well No. <b>2</b>
Unit Letter <b>J</b>	Section <b>35</b>	Township <b>19-S</b>	Range <b>34-E</b>	County <b>Lea</b>	
Actual Footage Location of Well: <b>2310</b> feet from the <b>South</b> line and <b>1800</b> feet from the <b>East</b> line					
Ground Level Elev. <b>3709.4 GL</b>	Producing Formation <b>Bone Spring</b>		Pool <b>Undesignated</b>	Dedicated Acreage: <b>80</b> Acres	

1. Outline the acreage dedicated to the subject well by colored pencil or hatchure marks on the plat below.
2. If more than one lease is dedicated to the well, outline each and identify the ownership thereof (both as to working interest and royalty).
3. If more than one lease of different ownership is dedicated to the well, have the interests of all owners been consolidated by communitization, unitization, force-pooling, etc?

☐ Yes    ☐ No    If answer is "yes," type of consolidation \_\_\_\_\_

If answer is "no," list the owners and tract descriptions which have actually been consolidated. (Use reverse side of this form if necessary.) \_\_\_\_\_

No allowable will be assigned to the well until all interests have been consolidated (by communitization, unitization, forced-pooling, or otherwise) or until a non-standard unit, eliminating such interests, has been approved by the Commission.



**CERTIFICATION**

I hereby certify that the information contained herein is true and complete to the best of my knowledge and belief.

Name *Bliss L. West*  
 Position Petroleum Engineer  
 Company Pennzoil United, Inc.

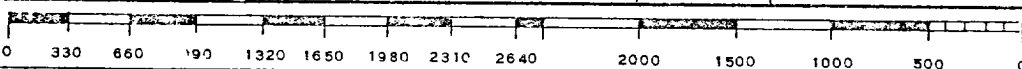
Date 4-3-70

I hereby certify that the well location shown on this plat was plotted from field notes of actual surveys made by me or under my supervision, and that the same is true and correct to the best of my knowledge and belief.

Date Surveyed September 25, 1969  
 Registered Professional Engineer and/or Land Surveyor

John W. West  
 Certificate No.

676



# A M E N D E D

## MEXICO OIL CONSERVATION COMMISSION WELL LOCATION AND ACREAGE DEDICATION PLAT

Form C-102  
Supersedes C-128  
Effective 1-1-65

All distances must be from the outer boundaries of the Section.

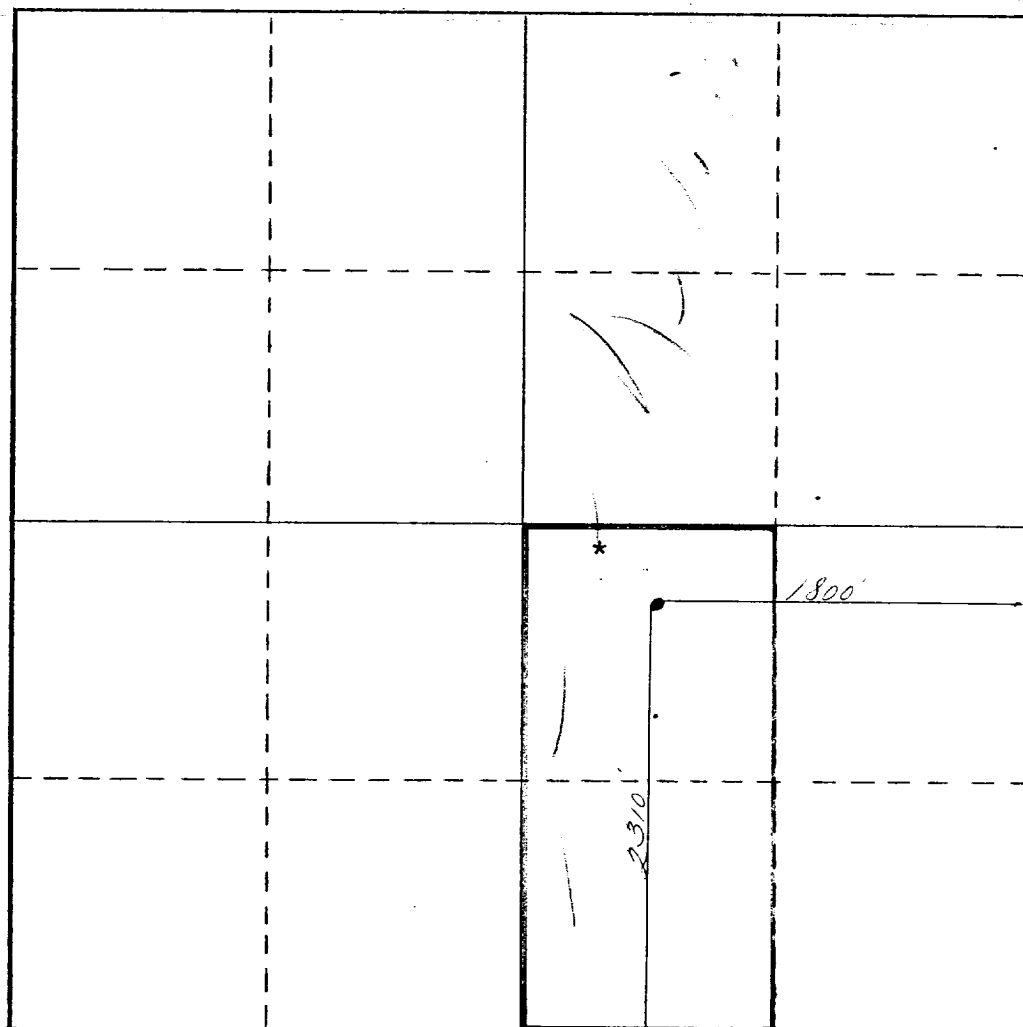
Operator <b>Pennzoil United, Inc.</b>			Lease <b>Mescalero Ridge Unit</b>		Well No. <b>2</b>
Unit Letter <b>J</b>	Section <b>35</b>	Township <b>19-S</b>	Range <b>34-E</b>	County <b>Lea</b>	
Actual Footage Location of Well: <b>2310</b> feet from the <b>South</b> line and <b>1800</b> feet from the <b>East</b> line					
Ground Level Elev. <b>3709.4 GL</b>	Producing Formation <b>Bone Spring</b>		Pool <b>Undesignated</b>		Dedicated Acreage: <b>80</b> Acres

1. Outline the acreage dedicated to the subject well by colored pencil or hachure marks on the plat below.
2. If more than one lease is dedicated to the well, outline each and identify the ownership thereof (both as to working interest and royalty).
3. If more than one lease of different ownership is dedicated to the well, have the interests of all owners been consolidated by communitization, unitization, force-pooling, etc?

☐ Yes ☐ No If answer is "yes," type of consolidation \_\_\_\_\_

If answer is "no," list the owners and tract descriptions which have actually been consolidated. (Use reverse side of this form if necessary.) \_\_\_\_\_

No allowable will be assigned to the well until all interests have been consolidated (by communitization, unitization, forced-pooling, or otherwise) or until a non-standard unit, eliminating such interests, has been approved by the Commission.



### CERTIFICATION

*I hereby certify that the information contained herein is true and complete to the best of my knowledge and belief.*

Name \_\_\_\_\_

Position \_\_\_\_\_

**Petroleum Engineer**

Company \_\_\_\_\_

**Pennzoil United, Inc.**

Date \_\_\_\_\_

**2-10-70**

*I hereby certify that the well location shown on this plat was plotted from field notes of actual surveys made by me or under my supervision, and that the same is true and correct to the best of my knowledge and belief.*

Date Surveyed \_\_\_\_\_

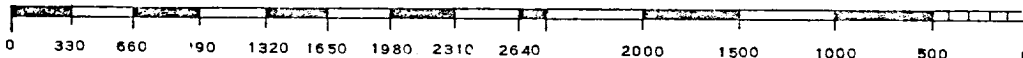
**September 25, 1969**

Registered Professional Engineer  
and/or Land Surveyor

**John W. West**

Certificate No. \_\_\_\_\_

**676**



Projected depth for this well was 14,000' to the Morrow formation and would have been a standard location for this depth. However, the well was barren in the Morrow formation and was plugged back to the Bone Spring. The Lea Bone Spring Pool is within one (1) mile of this well; therefore, this well will probably be placed in this pool, thus creating a non-standard location for the Lea Bone Spring Pool rules. Since we have the leases of the surrounding acreage we would appreciate administrative approval for this non-standard location.

Rodney C Byrd