

NO. OF COPIES RECEIVED	
DISTRIBUTION	
SANTA FE	
FILE	
U.S.G.S.	
LAND OFFICE	
OPERATOR	

NEW MEXICO OIL CONSERVATION COMMISSION

Form C-101
Revised 1-1-65

5A. Indicate Type of Lease	
STATE <input checked="" type="checkbox"/>	FEE <input type="checkbox"/>
5. State Oil & Gas Lease No.	
B-1520	

APPLICATION FOR PERMIT TO DRILL, DEEPEN, OR PLUG BACK

1a. Type of Work		7. Unit Agreement Name	
b. Type of Well DRILL <input checked="" type="checkbox"/> DEEPEN <input type="checkbox"/> PLUG BACK <input type="checkbox"/>		8. Farm or Lease Name	
OIL WELL <input checked="" type="checkbox"/> GAS WELL <input type="checkbox"/> OTHER <input type="checkbox"/> SINGLE ZONE <input checked="" type="checkbox"/> MULTIPLE ZONE <input type="checkbox"/>		Bridges State	
2. Name of Operator		9. Well No.	
Mobil Oil Corporation		143	
3. Address of Operator		10. Field and Pool, or Wildcat	
P. O. Box 633, Midland, Texas 79701		Undesignated	
4. Location of Well		12. County	
UNIT LETTER B LOCATED 660 FEET FROM THE North LINE		Lea	
AND 1780 FEET FROM THE East LINE OF SEC. 27 TWP. 17 S RGE. 34 E NMPM			
19. Proposed Depth		19A. Formation	
8750		Abo	
20. Rotary or C.T.		Rotary	
21. Elevations (Show whether DF, RT, etc.)		22. Approx. Date Work will start	
4027.2 GL		August 31, 1970	
21A. Kind & Status Plug. Bond		21B. Drilling Contractor	
On File		Marcum	

PROPOSED CASING AND CEMENT PROGRAM

SIZE OF HOLE	SIZE OF CASING	WEIGHT PER FOOT	SETTING DEPTH	SACKS OF CEMENT	EST. TOP
12-1/4	8-5/8	20#	1200		
12-1/4	8-5/8	24#	1650	Circulate	Surface
7-7/8	5-1/2	15.5#	1043		
7-7/8	5-1/2	14.0#	5374		
7-7/8	5-1/2	15.5#	7049		
7-7/8	5-1/2	17.0#	8651	Circulate	Above San Andres
7-7/8	5-1/2	17.0#	8700		zone est. @
					4640'

THE COMMISSION MUST BE NOTIFIED

24 HOURS PRIOR TO RUNNING 8 1/2"

CASING.

Mud Program

0 - 1650 Spud Mud
1650 - 8000 Brackish Water
8000 - 8700 Brackish Water, Flosal and Oil as needed to clean hole and obtain samples

Logging Program

2800 - 8200 - Laterolog
2800 - 8700 - Sidewall Neutron - GR Col.

APPROVAL VALID
FOR 90 DAYS UNLESS
DRILLING COMMENCED,

EXPIRES 11-4-70

IN ABOVE SPACE DESCRIBE PROPOSED PROGRAM: IF PROPOSAL IS TO DEEPEN OR PLUG BACK, GIVE DATA ON PRESENT PRODUCTIVE ZONE AND PROPOSED NEW PRODUCTIVE ZONE. GIVE BLOWOUT PREVENTER PROGRAM, IF ANY.

I hereby certify that the information above is true and complete to the best of my knowledge and belief.

Signed A. D. Bond A. D. Bond Title Proration Staff Assistant Date August 4, 1970

(This space for State Use)

APPROVED BY Leslie A. Clements TITLE State Engineer DATE August 4, 1970

CONDITIONS OF APPROVAL, IF ANY:

RECEIVED

AUG - 6 1970

OIL CONSERVATION COMM.
HOUSTON, TEX.

NE MEXICO OIL CONSERVATION COMMISSION
WELL LOCATION AND ACREAGE DEDICATION PLAT

Form C-102
Supersedes C-128
Effective 1-1-65

All distances must be from the outer boundaries of the Section.

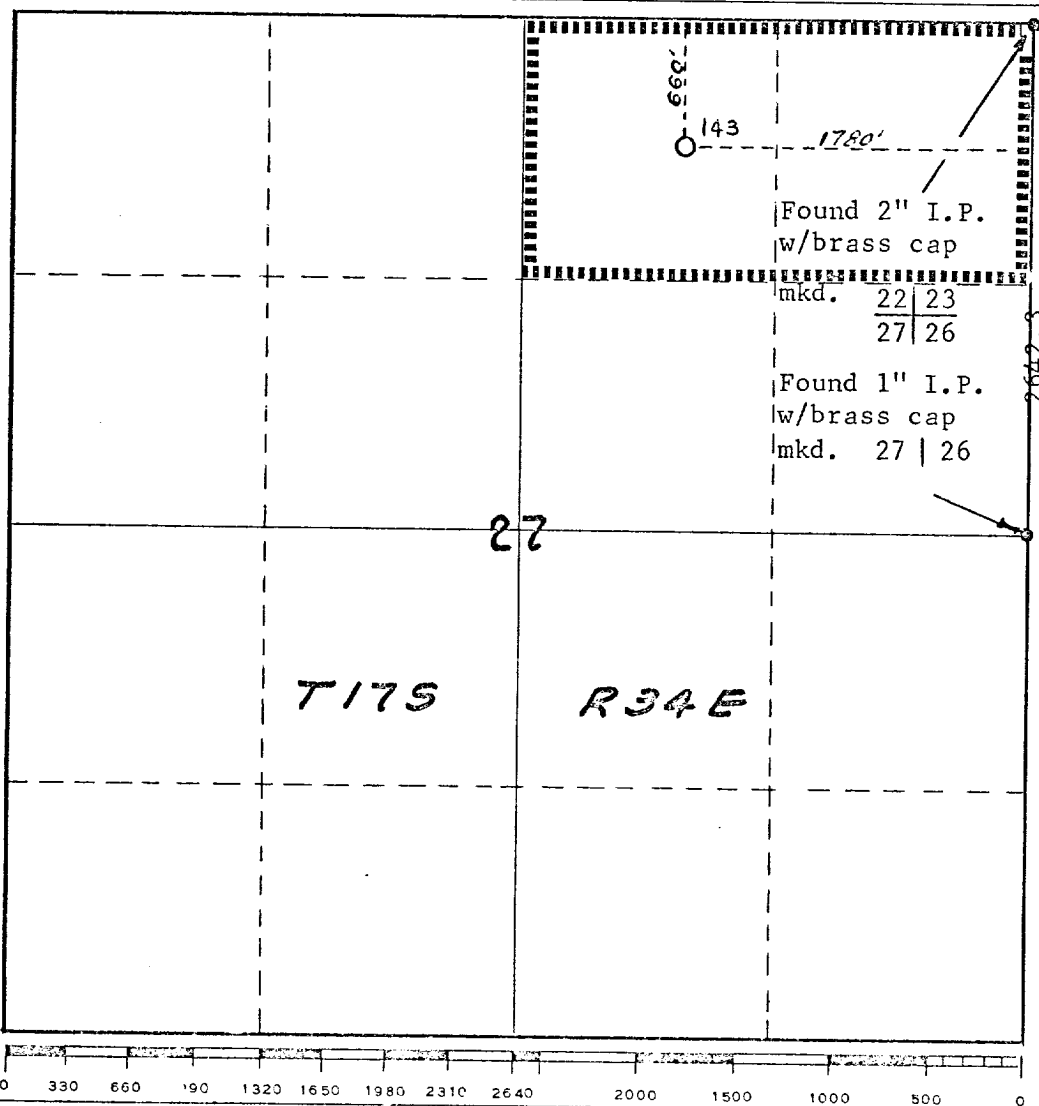
Operator Mobil Oil Corporation			Lease Bridges State		Well No. 143
Unit Letter B	Section 27	Township 17 S	Range 34 E	County Lea	
Actual Footage Location of Well: 660 feet from the North line and 1780 feet from the East line					
Ground Level Elev. 4027.2	Producing Formation Abo	Pool Undesignated		Dedicated Acreage: 80 Acres	

1. Outline the acreage dedicated to the subject well by colored pencil or hachure marks on the plat below.
2. If more than one lease is dedicated to the well, outline each and identify the ownership thereof (both as to working interest and royalty).
3. If more than one lease of different ownership is dedicated to the well, have the interests of all owners been consolidated by communitization, unitization, force-pooling, etc?

☐ Yes ☐ No If answer is "yes," type of consolidation _____

If answer is "no," list the owners and tract descriptions which have actually been consolidated. (Use reverse side of this form if necessary.) _____

No allowable will be assigned to the well until all interests have been consolidated (by communitization, unitization, forced-pooling, or otherwise) or until a non-standard unit, eliminating such interests, has been approved by the Commission.



CERTIFICATION

I hereby certify that the information contained herein is true and complete to the best of my knowledge and belief.

Name
A. D. Bond
Position
Proration Staff Assistant
Company
Mobil Oil Corporation
Date
August 4, 1970

I hereby certify that the well location shown on this plat was plotted from field notes of actual surveys made by me or under my supervision, and that the same is true and correct to the best of my knowledge and belief.

Date surveyed
June 19, 1970
Registered Professional Engineer and/or Land Surveyor
JOHN H. SEEREY, JR.
Certificate No.
3572

173

RECEIVED

AUG 13 1970

OIL CONSERVATION COM.
WASHINGTON, D.C.

COUNTY LEA FIELD Vacuum, N. STATE NM 30-025-23565
 OPR MOBIL OIL CORP. MAP
 143 Bridges - State
 Sec 27, T-17-S, R-34-E CO-ORD
 660' FNL, 1780' FEL of Sec
 Spd 8-31-70
 Cmp 9-27-70 CLASS EL 40382

CSG & SX - TUBING

8 5/8" at 1655' w/1000 SX

5 1/2" at 8745' w/3100 SX

LOGS EL GR RA IND HC A

TD 8745'

IP (Abo) Perfs 8605-80' P 146 EOPD + 3 BW. Pot based on 24
 hr test. GOR 592, Grav 37.8.

Distribution limited and publication prohibited by subscribers' agreement.
 Reproduction rights reserved by Williams & Lee Scouting Service, Inc.

CONT. Marcum
 DATE

PROP DEPTH 8750' TYPE RT

F.R. 8-11-70; Opr's Elev. 4027' GL
 PD 8750' RT (Abo)
 Contractor - Marcum
 9-4-70 Drig. 3652' anhy
 9-14-70 Drig. 7315' lm
 9-21-70 TD 8745'; Prep cmt csg
 9-28-70 TD 8745'; Swbg
 Perf @ 8605', 8608', 8610', 8619', 8625',
 8627', 8631', 8637', 8639', 8643', 8645',
 8647', 8649', 8651', 8653', 8655', 8659',
 8664', 8669', 8673', 8675', 8680' w/1 SPI
 Acid (8605-80') 500 gals
 Swbd 25 ELO in 2 hrs (8605-80')
 Acid (8605-80') 10,000 gals
 Swbd 67 BNO + 32 BAW in 11 hrs
 10-5-70 TD 8745'; WO Pot
 Ppd 146 BO + 3 ELW in 24 hrs; GOR 592, Grav 37.8.

LEA
MOBIL OIL CORP.

Vacuum, N.
143 Bridges - State

Sec 27, T17S, T34E
Page #2

10-12-70

TD 8745'; COMPLETE
LOG TOPS: Anhydrite 1569', Yates 2832',
Queen 3790', San Andres 4570', Glorieta
6060', Abo 8166'

10-15-70

COMPLETION REPORTED

All distances must be from the outer boundaries of the Section.

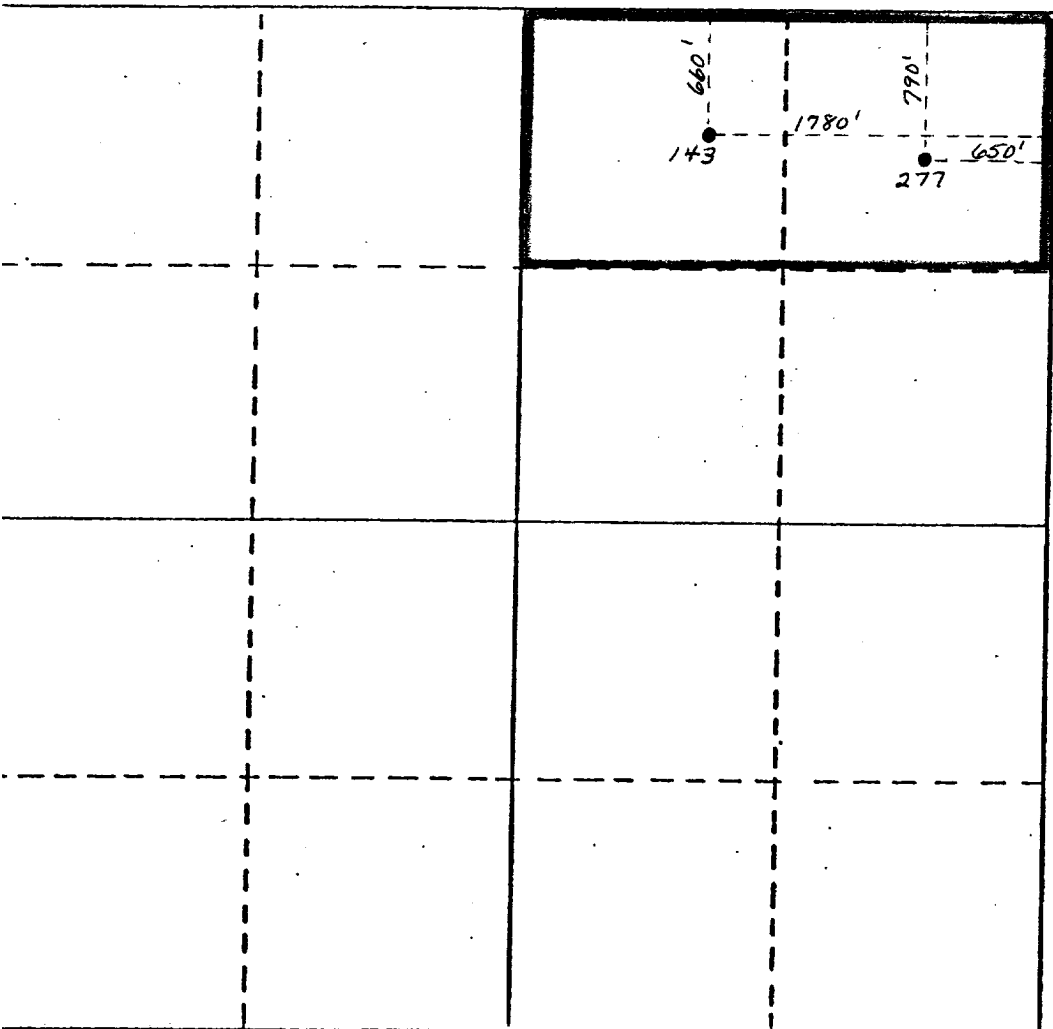
Operator Mobil Oil Corporation			Lease North Vacuum Abo Unit		Well No. 143
Unit Letter B	Section 27	Township 17 S	Range 34 E	County Lea	
Actual Postage Location of Well:					
660 feet from the North line and		1780 feet from the East line			
Ground Level Elev. 4027.2	Producing Formation Abo	Pool Undesignated		Dedicated Acreage: 80 - 2 Wells Acres	

1. Outline the acreage dedicated to the subject well by colored pencil or hatchure marks on the plat below.
2. If more than one lease is dedicated to the well, outline each and identify the ownership thereof (both as to working interest and royalty).
3. If more than one lease of different ownership is dedicated to the well, have the interests of all owners been consolidated by communitization, unitization, force-pooling, etc?

☒ Yes ☐ No If answer is "yes," type of consolidation Unitization

If answer is "no," list the owners and tract descriptions which have actually been consolidated. (Use reverse side of this form if necessary.)

No allowable will be assigned to the well until all interests have been consolidated (by communitization, unitization, forced-pooling, or otherwise) or until a non-standard unit, eliminating such interests, has been approved by the Division.



CERTIFICATION

I hereby certify that the information contained herein is true and complete to the best of my knowledge and belief.

G.E. Tate

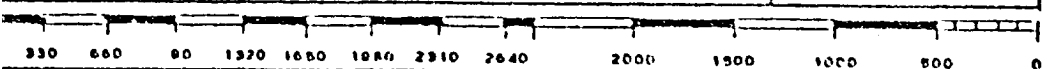
Name
G.E. Tate
Position
Env. & Reg. Mgr.
Company
Mobil Producing Tx.&N.M., Inc
Date
8/28/85

I hereby certify that the well location shown on this plat was plotted from field notes of actual surveys made by me or under my supervision, and that the same is true and correct to the best of my knowledge and belief.

Date Surveyed

Registered Professional Engineer and/or Land Surveyor

Certificate No.



RECEIVED

SEP - 8 1985

O.C.D.
HOBBS OFFICE