

NO. OF COPIES RECEIVED	
DISTRIBUTION	
SANTA FE	
FILE	
U.S.G.S.	
LAND OFFICE	
OPERATOR	

NEW MEXICO OIL CONSERVATION COMMISSION

Form C-101
Revised 1-1-65

5A. Indicate Type of Lease
STATE <input checked="" type="checkbox"/> FEE <input type="checkbox"/>
5. State Oil & Gas Lease No.
B-1519

APPLICATION FOR PERMIT TO DRILL, DEEPEN, OR PLUG BACK

1a. Type of Work		7. Unit Agreement Name	
b. Type of Well OIL WELL <input checked="" type="checkbox"/> GAS WELL <input type="checkbox"/> OTHER <input type="checkbox"/>		8. Farm or Lease Name State "J"	
2. Name of Operator Mobil Oil Corporation		9. Well No. 5	
3. Address of Operator P. O. Box 633, Midland, Texas 79701		10. Field and Pool, or Wildcat Undesignated	
4. Location of Well UNIT LETTER B LOCATED 1780 FEET FROM THE East LINE AND 660 FEET FROM THE North LINE OF SEC. 22 TWP. 17-S RGE. 34-E NMPM		12. County Lea	
18. Proposed Depth 8800		19A. Formation Abo	
21. Elevations (Show whether DF, RT, etc.) 4049 GL		20. Rotary or C.T. Rotary	
21A. Kind & Status Plug. Bond On File		22. Approx. Date Work will start Dec. 30, 1970	
21B. Drilling Contractor Marcum Drilling Co.			

23.

PROPOSED CASING AND CEMENT PROGRAM

SIZE OF HOLE	SIZE OF CASING	WEIGHT PER FOOT	SETTING DEPTH	SACKS OF CEMENT	EST. TOP
12 1/2	8 5/8	23#	1710	circulate	Surface
7 7/8	5 1/2	15.5#	1043		
7 7/8	5 1/2	14.0#	5374	circulate	Above Yates
7 7/8	5 1/2	15.5#	7049		Zone @ approx.
					2900'
7 7/8	5 1/2	17.0#	8651		
7 7/8	5 1/2	17.0#	8700		

Mud Program

0 - 1710 spud mud
1710 - 8500 brine water w/additions of oil as needed
8500 - 8800 brine water w/salt gel and starch

Logging Program

2600 - 4800 GR-SNP-Caliper
8000 - 8800
2600 - 8800 Dual Laterlog (LL 9)

2-23-71

89/8

IN ABOVE SPACE DESCRIBE PROPOSED PROGRAM; IF PROPOSAL IS TO DEEPEN OR PLUG BACK, GIVE DATA ON PRESENT PRODUCTIVE ZONE AND PROPOSED NEW PRODUCTIVE ZONE. GIVE SLOWOUT PREVENTER PROGRAM, IF ANY.

I hereby certify that the information above is true and complete to the best of my knowledge and belief.

Signed J. H. Seerey J. H. Seerey Title Associate Engineer Date 11-19-70

(This space for State Use)

APPROVED BY [Signature] TITLE SUPERVISOR DISTRICT 1 DATE

CONDITIONS OF APPROVAL, IF ANY:

RECEIVED

MAY 2 1970

OIL CONSERVATION COM'L
HOZRS, N. H.

NEW MEXICO OIL CONSERVATION COMMISSION
WELL LOCATION AND ACREAGE DEDICATION PLAT

Form C-102
Supersedes C-128
Effective 1-1-65

All distances must be from the outer boundaries of the Section.

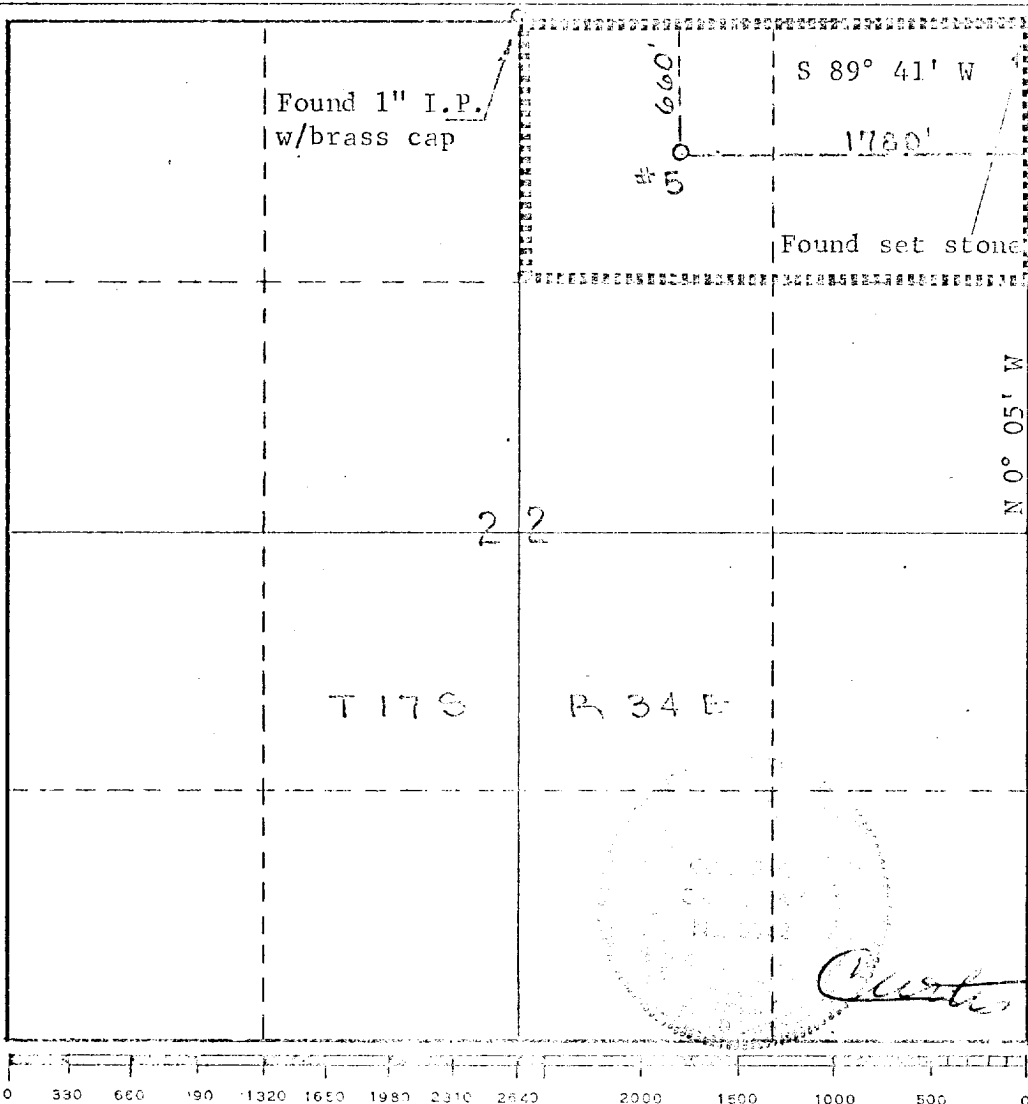
Operator Mobil Oil Corporation			Lease State "J"		Well No. 5
Unit Letter B	Section 22	Township 17-S	Range 34-E	County Lea	
Actual Footage Location of Well: 1780 feet from the E line and 660 feet from the N line					
Ground Level Elev. 4049	Producing Formation Abo	Pool Undesignated		Dedicated Acreage: 80 Acres	

1. Outline the acreage dedicated to the subject well by colored pencil or hachure marks on the plat below.
2. If more than one lease is dedicated to the well, outline each and identify the ownership thereof (both as to working interest and royalty).
3. If more than one lease of different ownership is dedicated to the well, have the interests of all owners been consolidated by communitization, unitization, force-pooling, etc?

☐ Yes ☐ No If answer is "yes," type of consolidation _____

If answer is "no," list the owners and tract descriptions which have actually been consolidated. (Use reverse side of this form if necessary.) _____

No allowable will be assigned to the well until all interests have been consolidated (by communitization, unitization, forced-pooling, or otherwise) or until a non-standard unit, eliminating such interests, has been approved by the Commission.



CERTIFICATION	
I hereby certify that the information contained herein is true and complete to the best of my knowledge and belief.	
Name	John H. Seerey
Position	Associate Engineer
Company	Mobil Oil Corporation
Date	November 18, 1970
I hereby certify that the well location shown on this plat was plotted from field notes of actual surveys made by me or under my supervision, and that the same is true and correct to the best of my knowledge and belief.	
Date Surveyed	November 17, 1970
Registered Professional Engineer and/or Land Surveyor Curtis A. Callaway	
Certificate No.	3342

Injection & notes

RECEIVED
JUN 2 1970
OIL CONSERVATION COM. 1.
HOBBS, N. M.