

All distances must be from the outer boundaries of the Section.

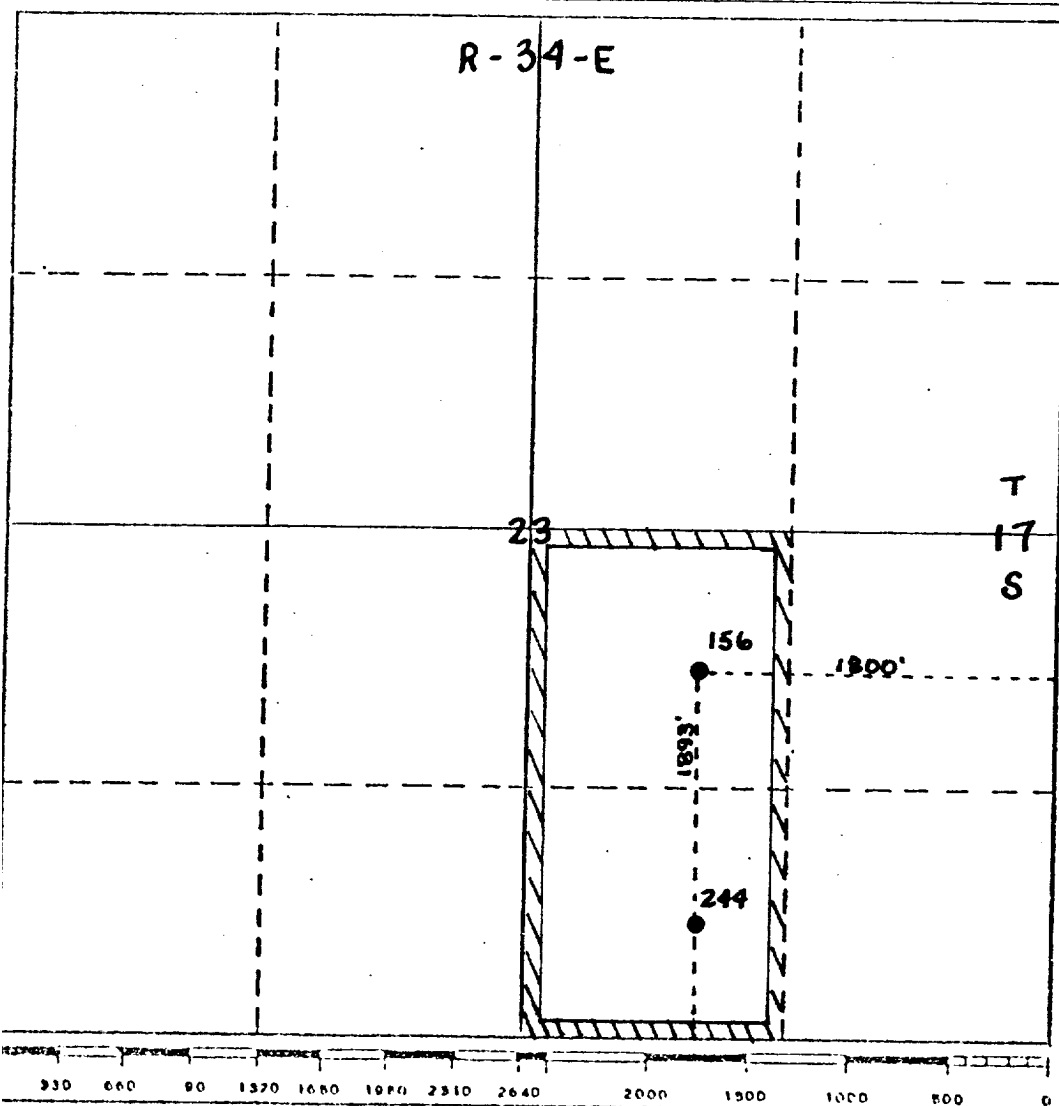
Operator MOBIL PRODUCING TX. & N.M. INC.			Lease North Vacuum Abo Unit		Well No. 156
Unit Letter J	Section 23	Township 17-S	Range 34-E	County Lea	
Actual Footage Location of Well: 1800 feet from the East line and 1893 feet from the South line					
Ground Level Elev. 4013	Producing Formation ABO		Pool Vacuum, North Abo		Dedicated Acreage: (2 wells) 80 Acres

1. Outline the acreage dedicated to the subject well by colored pencil or hatchure marks on the plat below.
2. If more than one lease is dedicated to the well, outline each and identify the ownership thereof (both as to working interest and royalty).
3. If more than one lease of different ownership is dedicated to the well, have the interests of all owners been consolidated by communitization, unitization, force-pooling, etc?

☒ Yes ☐ No If answer is "yes," type of consolidation unitized

If answer is "no," list the owners and tract descriptions which have actually been consolidated. (Use reverse side of this form if necessary.)

No allowable will be assigned to the well until all interests have been consolidated (by communitization, unitization, forced-pooling, or otherwise) or until a non-standard unit, eliminating such interests, has been approved by the Division.



CERTIFICATION

I hereby certify that the information contained herein is true and complete to the best of my knowledge and belief.

A. D. Bond

Name
A. D. Bond

Position
Regulatory Technician Supervisor

Company
MOBIL PRODUCING TX. & N.M. INC.

Date
June 12, 1984

I hereby certify that the well location shown on this plat was plotted from field notes of actual surveys made by me or under my supervision, and that the same is true and correct to the best of my knowledge and belief.

Date Surveyed

Registered Professional Engineer and/or Land Surveyor

Certificate No.

COUNTY	LEA	FIELD	Vacuum, N.	STATE NM	30-025-23696
OPR	MOBIL OIL CORP.			MAP	
	156 Bridges - State				
	Sec 23,T-17-S, R-34-E			CO-ORD	
	1893' FSL, 1800' FEL of Sec				
	Spd 4-3-71				
	Cmp 4-30-71	CLASS		EL 4037' 2	
		FORMATION	DATUM	FORMATION	DATUM
CSG & SX - TUBING					
8 5/8" at 1680' w/1000 SX					
5 1/2" at 8750' w/3100 SX					
LOGS EL GR RA IND HC A					
	TD 8750'; PBD 8725'				
IP (Abo) Perfs 8487-8548' P 283 BOPD + 1 BAW. Pot based on 24 hr test. GOR NR; Grav NR.					

Distribution limited and publication prohibited by subscribers' agreement.
Reproduction rights reserved by Williams & Lee Scouting Service, Inc.

CONT.	Marcum	PROP DEPTH	8800'	TYPE	RT
DATE					

	F.R. 2-9-71; Opr's Elev. 4013' GL
	PD 8800' RT (Abo)
	Contractor - Marcum
4-5-71	TD 1680'; WOC
4-12-71	Drlg. 5650' lm
4-19-71	Drlg. 7550' lm
4-26-71	TD 8750'; Prep run logs
5-3-71	TD 8750'; PBD 8725'; Prep RU Pmp
	Perf @ 8487', 8488', 8495', 8498', 8499',
	8500', 8501', 8502', 8507', 8509', 8522',
	8524', 8526', 8527', 8535', 8544', 8548'
	w/1 SPI

LEA Vacuum, N. NM Sec 23,T17S,R34E
MOBIL OIL CORP. 156 Bridges - State Page #2

5-3-71 Continued
Acid (8487-8548') 10,500 gals
Swbd & Flwd 40 BNO + 15 BAW in 6 hrs
5-10-71 TD 8750'; PBD 8725'; COMPLETE
5-13-71 COMPLETION REPORTED