

NO. OF COPIES RECEIVED	
DISTRIBUTION	
SANTA FE	
FILE	
U.S.G.S.	
LAND OFFICE	
OPERATOR	

# NEW MEXICO OIL CONSERVATION COMMISSION

Form C-101  
Revised 1-1-65

5A. Indicate Type of Lease	
STATE <input checked="" type="checkbox"/>	FEE <input type="checkbox"/>
5. State Oil & Gas Lease No.	
K-6203	

## APPLICATION FOR PERMIT TO DRILL, DEEPEN, OR PLUG BACK

1a. Type of Work			7. Unit Agreement Name		
b. Type of Well OIL WELL <input checked="" type="checkbox"/> GAS WELL <input type="checkbox"/> OTHER <input type="checkbox"/> DEEPEN <input type="checkbox"/> PLUG BACK <input type="checkbox"/>			8. Farm or Lease Name		
2. Name of Operator			9. Well No.		
Mobil Oil Corporation			1		
3. Address of Operator			10. Field and Pool, or Wildcat		
P. O. Box 633, Midland, Texas, 79701			Undesignated		
4. Location of Well			12. County		
UNIT LETTER <u>N</u> LOCATED <u>660</u> FEET FROM THE <u>South</u> LINE			Lea		
AND <u>1902</u> FEET FROM THE <u>West</u> LINE OF SEC. <u>18</u> TWP. <u>17S</u> RGE. <u>35E</u> NMMPM					
19. Proposed Depth			19A. Formation		20. Rotary or C.T.
9000			Abo		Rotary
21. Elevations (Show whether DF, RT, etc.)		21A. Kind & Status Plug. Bond	21B. Drilling Contractor		22. Approx. Date Work will start
Ground - 3995		On File	Marcum Drlg. Co.		10-27-71

23.

## PROPOSED CASING AND CEMENT PROGRAM

SIZE OF HOLE	SIZE OF CASING	WEIGHT PER FOOT	SETTING DEPTH	SACKS OF CEMENT	EST. TOP
15	12 3/4	34	250	Circulate	Surface
11	8 5/8	28	3200	"	"
7 7/8	5 1/2	17	9000	"	"

### Mud Program

0 - 1600 Spud Mud  
1600 - 3200 Saturated Brine  
3200 - 8600 Fresh Water  
8600 - T.D. Fresh Water Gel

### Logging Program

Surface To Total Depth - GR-SNP-CAL  
3000 - Total Depth - Laterolog

UNLESS  
COMPLETED,

EXPIRES 1-26-72

IN ABOVE SPACE DESCRIBE PROPOSED PROGRAM: IF PROPOSAL IS TO DEEPEN OR PLUG BACK, GIVE DATA ON PRESENT PRODUCTIVE ZONE AND PROPOSED NEW PRODUCTIVE ZONE. GIVE BLOWOUT PREVENTER PROGRAM, IF ANY.

I hereby certify that the information above is true and complete to the best of my knowledge and belief.

Signed A. D. Bond A. D. Bond Title Proration Staff Assistant Date October 22, 1971

(This space for State Use)

APPROVED BY [Signature] TITLE SUPERVISOR DISTRICT I DATE OCT 26 1971

CONDITIONS OF APPROVAL, IF ANY:

RECEIVED

COPIES 1971

OIL CONSERVATION COMM.  
HOBBS, N. M.

**NEW MEXICO OIL CONSERVATION COMMISSION  
WELL LOCATION AND ACREAGE DEDICATION PLAT**

Form C-102  
Supersedes C-128  
Effective 1-1-65

All distances must be from the outer boundaries of the Section.

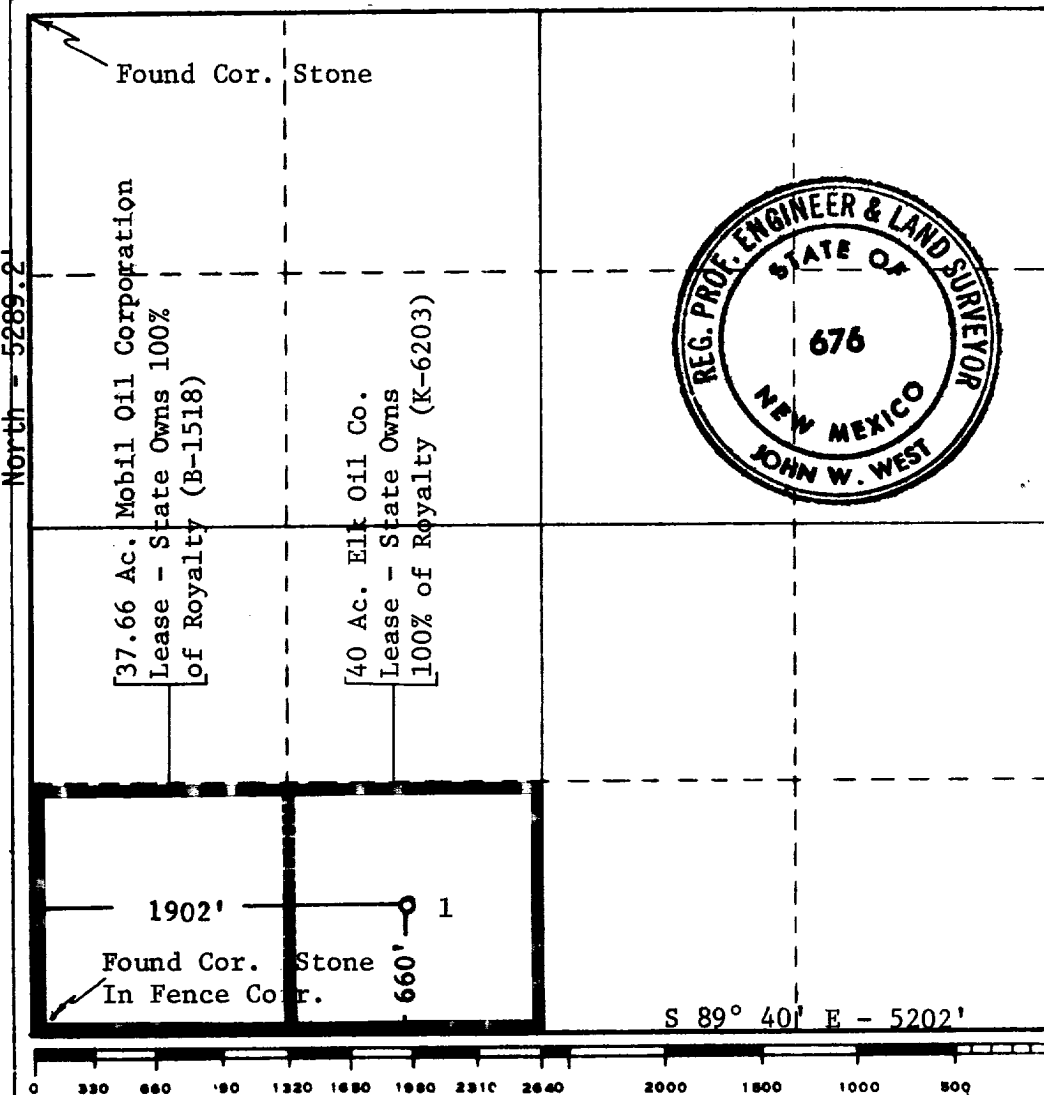
Operator <b>MOBIL OIL CORPORATION</b>			Lease <b>ELK STATE COM</b>		Well No. <b>1</b>
Unit Letter <b>N</b>	Section <b>18</b>	Township <b>17 SOUTH</b>	Range <b>35 EAST</b>	County <b>LEA</b>	
Actual Footage Location of Well: <b>660</b> feet from the <b>SOUTH</b> line and <b>1902</b> feet from the <b>WEST</b> line					
Ground Level Elev. <b>3995</b>	Producing Formation <b>Abo</b>		Pool <b>Undesignated</b>		Dedicated Acreage: <b>77.66</b> Acres

1. Outline the acreage dedicated to the subject well by colored pencil or hachure marks on the plat below.
2. If more than one lease is dedicated to the well, outline each and identify the ownership thereof (both as to working interest and royalty).
3. If more than one lease of different ownership is dedicated to the well, have the interests of all owners been consolidated by communitization, unitization, force-pooling, etc?

☒ Yes    ☐ No    If answer is "yes," type of consolidation Communitization

If answer is "no," list the owners and tract descriptions which have actually been consolidated. (Use reverse side of this form if necessary.) \_\_\_\_\_

No allowable will be assigned to the well until all interests have been consolidated (by communitization, unitization, forced-pooling, or otherwise) or until a non-standard unit, eliminating such interests, has been approved by the Commission.



**CERTIFICATION**

I hereby certify that the information contained herein is true and complete to the best of my knowledge and belief.

*A. D. Bond*  
Name

A. D. Bond  
Position

Proration Staff Assistant  
Company

Mobil Oil Corporation  
Date

October 22, 1971

I hereby certify that the well location shown on this plat was plotted from field notes of actual surveys made by me or under my supervision, and that the same is true and correct to the best of my knowledge and belief.

Date Surveyed  
**10-14-1971**

Registered Professional Engineer and/or Land Surveyor

*John W. West*  
Certificate No. **676**

113

RECEIVED

GOV 2-1971

OIL CONSERVATION COMM.  
ROBBS, IL IL